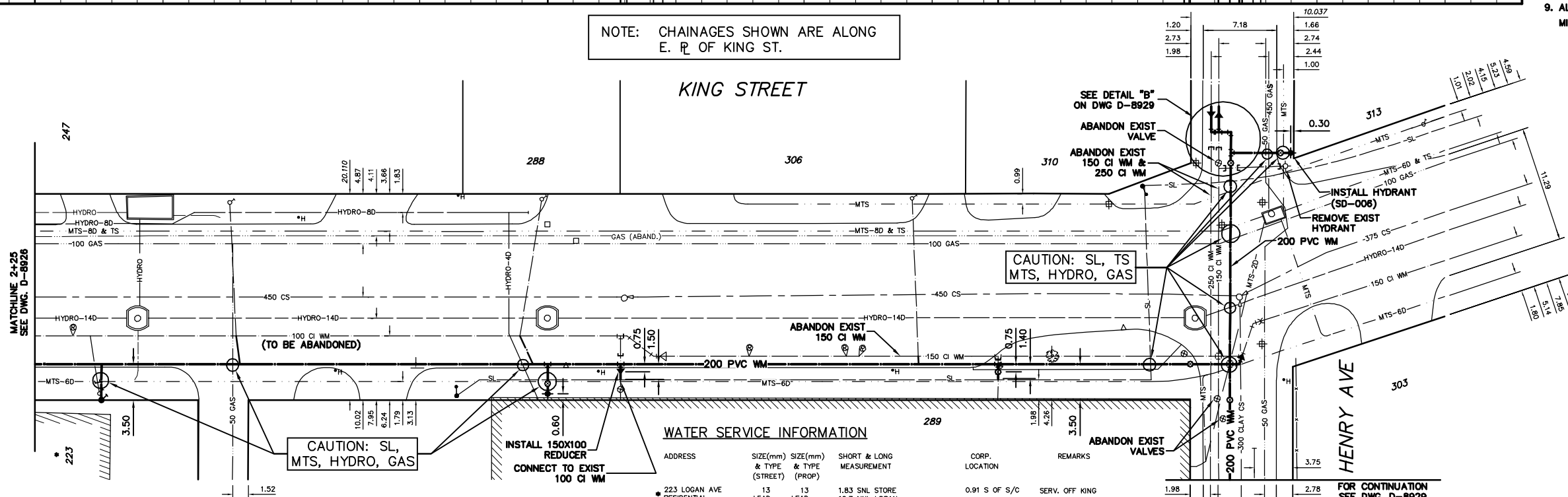


- CONSTRUCTION NOTES**
- EXPOSE EXISTING WATERMAIN & CONFIRM INVERTS PRIOR TO CONSTRUCTION.
 - CONFIRM LOCATION OF ALL SERVICES IN THE FIELD.
 - INSTALL WATERMAIN BY TRENCHLESS METHODS.
 - TRENCHES AND EXCAVATIONS WITHIN 1 METRE OF A PAVED AREA INCLUDING SIDEWALKS SHALL BE CLASS 3 BACKFILL.
 - ALL MATERIALS SHALL CONFORM TO THE CITY OF WINNIPEG STANDARD CONSTRUCTION SPECIFICATIONS.
 - MINIMUM COVER TO TOP OF WATERMAIN SHALL BE 2.4 m.
 - REPLACE ALL EXISTING LEAD SERVICES FROM PROPOSED WATERMAIN TO R.
 - NOTIFY ALL AFFECTED RESIDENTS AND BUSINESSES 24 HOURS IN ADVANCE OF ANY WATER SHUTDOWNS OR DISRUPTION OF SERVICE.
 - ALL LARGE DIAMETER SERVICE CONNECTIONS TO BE SUPPLIED WITH MIN. 38 mm TEMPORARY SERVICE CONNECTIONS.

NOTE: CHAINAGES SHOWN ARE ALONG E. R. OF KING ST.



WATER SERVICE INFORMATION

ADDRESS	SIZE(mm) & TYPE (STREET)	SIZE(mm) & TYPE (PROP)	SHORT & LONG MEASUREMENT	CORP. LOCATION	REMARKS
223 LOGAN AVE	13 LEAD	13 LEAD	1.83 SNL STORE	0.91 S OF S/C	SERV. OFF KING
247 LOGAN AVE	25 COPPER	25 COPPER	10.7 NNL BLDG	-	S/C & BOX REPAIR AUG/88
273 LOGAN AVE	20 COPPER	20 COPPER	22.1 NNL LOGAN	-	-
288 KING ST	20 COPPER	20 COPPER	3.51 SNL BLDG	2.13 S OF S/C	REV. TAPPED
289 KING ST	100 COPPER	100 COPPER	53.64 NNL LOGAN	-	-
289 KING ST	100 COPPER	100 COPPER	25.36 SSL HENRY	N/A	DRESSER CPLG. 0.6 E.V.
289 KING ST	150 CI	150 CI	OPP DR. KING EDWARD HALL	5.79 EEL KING	SERV. FROM HENRY
289 KING ST	150 CI	150 CI	29.26 EEL KING	-	-
289 KING ST	150 COPPER	150 COPPER	18.75 SSL HENRY	OPP VALVE	-
306 KING ST	25 COPPER	25 COPPER	18.75 SSL HENRY	-	-
306 KING ST	25 COPPER	25 COPPER	1.52 SNL BLDG	0.6 N OF S/C	-
310 KING ST	20 COPPER	20 COPPER	27.13 SSL HENRY	-	-
310 KING ST	20 COPPER	20 COPPER	10.06 NNL BLDG	-	-
310 KING ST	40.54 COPPER	40.54 COPPER	40.54 WWL KING	0.91 W OF S/C	TAPPED OFF 4" MAIN

*SERVICES TO BE RENEWED TO R ALL OTHERS TO BE RECONNECTED

METRIC
WHOLE NUMBERS INDICATE MILLIMETRES
DECIMALIZED NUMBERS INDICATE METRES

NOTE: ALL VALVES TO BE INSTALLED COUNTERCLOCKWISE TO CLOSE

WARNING
IF POWER EQUIPMENT OR EXPLOSIVES ARE TO BE USED FOR EXCAVATION ON THIS PROJECT THE CONTRACTOR MUST:
1) NOTIFY THE GAS COMPANY OF THE PROPOSED LOCATION OF EXCAVATION.
2) TAKE PRECAUTION TO AVOID DAMAGE TO GAS COMPANY INSTALLATIONS.
SEE PROVINCIAL REGULATION 210/72 FOR DETAILS

200 WM	WATERMAIN	200 WM	SL, HYDRO	150 WM	WATERMAIN	150 WM
+	HYDRANT	+	MTS	-	HYDRANT	+
⊖	VALVE	⊖	TRAFFIC SIGNALS	-	VALVE	⊖
525 LDS	LAND DRAINAGE SEWER	525 LDS	GAS	300 LDS	LAND DRAINAGE SEWER	300 LDS
375 WWS	WASTEWATER SEWER	375 WWS	SURVEY BAR	250 WWS	WASTEWATER SEWER	250 WWS
○	MANHOLE	●	FENCE	□	PROFILE	□
⊠	CATCH BASIN	⊠	POLE - HYDRO, MTS	▬▬▬	GROUND ABOVE PIPE	▬▬▬
∇	CURB INLET	∇	CURB STOP	▬▬		▬▬
∠	REDUCER	∠	GUY ANCHOR			
X	COUPLING	X	LIGHT STANDARD			
⊕	ANODE	⊕	TREE			
EXISTING	LEGEND-PLAN	PROPOSED	EXISTING	LEGEND-PLAN	PROPOSED	EXISTING
				LEGEND-PROFILE		

LOCATION APPROVED
UNDERGROUND STRUCTURES

SUPV. U/G STRUCTURES COMMITTEE DATE

NOTE: LOCATION OF UNDERGROUND STRUCTURES AS SHOWN ARE BASED ON THE BEST INFORMATION AVAILABLE BUT NO GUARANTEE IS GIVEN THAT ALL EXISTING UTILITIES ARE SHOWN OR THAT THE GIVEN LOCATIONS ARE EXACT. CONFIRMATION OF EXISTENCE AND EXACT LOCATION OF ALL SERVICES MUST BE OBTAINED FROM THE INDIVIDUAL UTILITIES BEFORE PROCEEDING WITH CONSTRUCTION.

CITY OF WINNIPEG
WATER AND WASTE ENGINEERING DIVISION

DESIGNED BY: DEB
CHECKED BY: TW

DRAWN BY: CJH
APPROVED BY: KZ

HOR. SCALE: 1:250
VERTICAL: 1:50

RELEASED FOR CONSTRUCTION

DATE: 2006 04 04

ENGINEER'S SEAL

ORIGINAL SIGNED BY K.R. ZUREK 06/04/04

THE CITY OF WINNIPEG
WATER AND WASTE DEPARTMENT

2006 WATERMAIN RENEWALS

KING STREET
4 NNL LOGAN AVENUE TO HENRY AVENUE

SHEET 3 OF 13
CITY DRAWING NUMBER D-8927

BID OPPORTUNITY: 242-2006
FILENAME: King.dwg
PLOT DATE: 2006 04 04