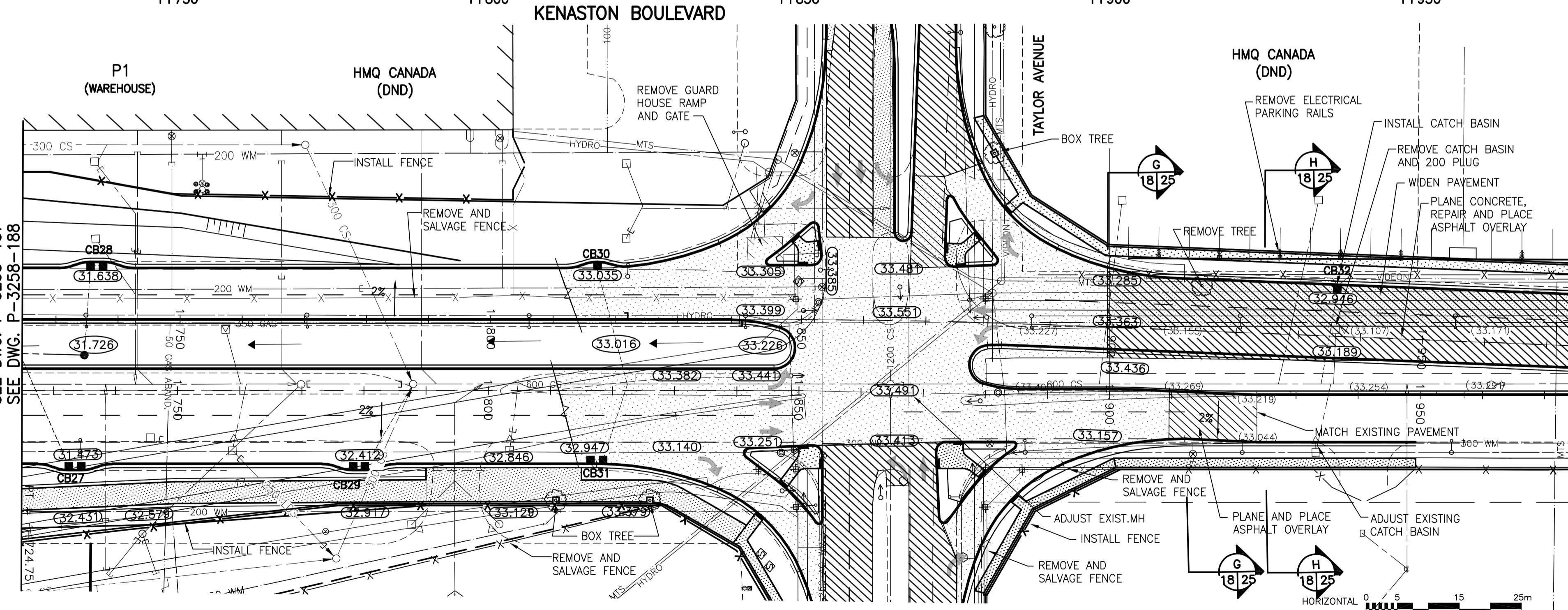
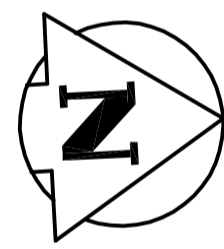
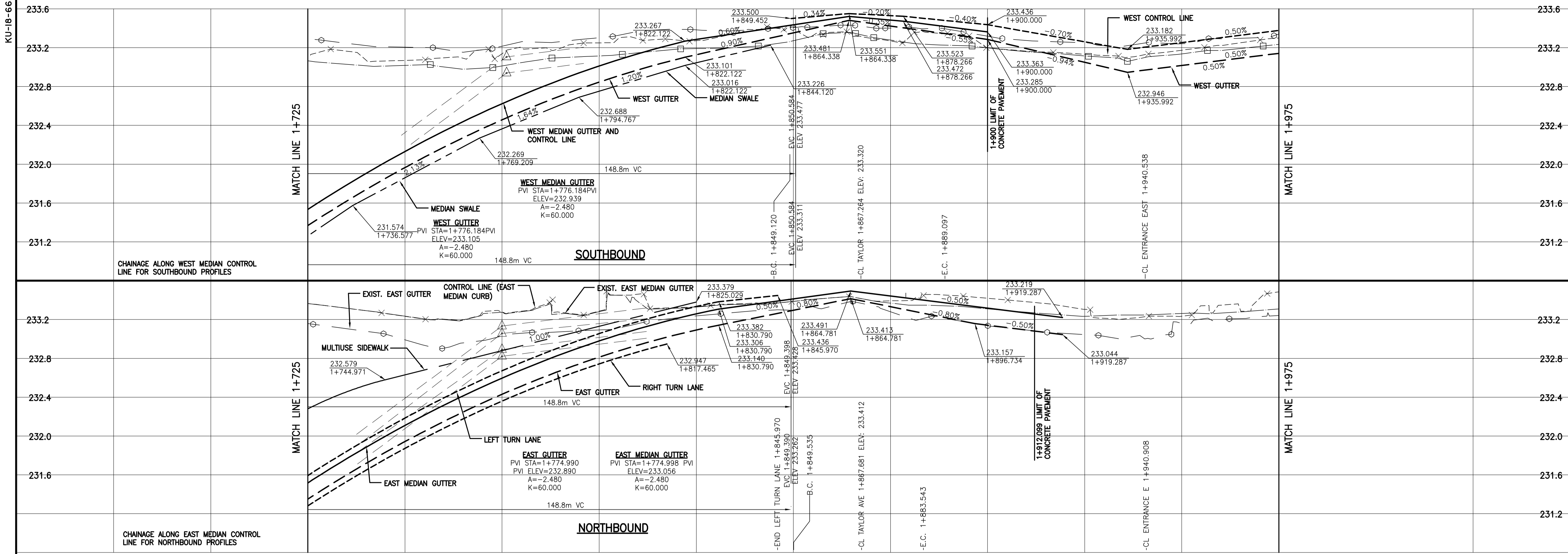


KU-18-665



NOTE:
ALL UTILITY POLES WITHIN PROPOSED ROADWAY TO BE RELOCATED (BY OTHERS)

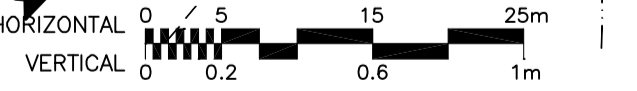
MATCH LINE 1+725
FOR CONTINUATION
SEE DWG. P-3258-187
SEE DWG. P-3258-188

MATCH LINE 1+975
FOR CONTINUATION
SEE DWG. P-3258-190

METRIC
WHOLE NUMBERS INDICATE MILLIMETRES
DECIMALIZED NUMBERS INDICATE METRES

WARNING
IF POWER EQUIPMENT OR EXPLOSIVES ARE TO BE USED FOR EXCAVATION ON THIS PROJECT THE CONTRACTOR MUST:
1) NOTIFY THE GAS COMPANY OF THE PROPOSED LOCATION OF EXCAVATION.
2) TAKE PRECAUTION TO AVOID DAMAGE TO GAS COMPANY INSTALLATIONS.
SEE PROVINCIAL REGULATION 140/92 FOR DETAILS

BENCH MARK: BOLT IN 12.5m CONC. PILE, 2.4m N. OF S.L. OF WILKES AVE. (FENCE LINE), & 7m E. OF E. FACE OF 2nd TOWER W. OF THE MOST ELY. SET OF TRACKS OF C.P.R. LA RIVIERE SUB. DIV.



	GAS		MANHOLE
	MTS		CATCH BASIN/CATCH PIT
	HYDRO		C & G INLET WITH BOX
	VIDEO		TREE
	TRAFFIC SIGNALS		TEST HOLE
	LAND DRAINAGE SEWER		PROPERTY LINE
	SANITARY/COMBINED SEWER		SURVEY BAR
	CATCHBASIN LEAD		GEODETIC MONUMENT
	WATERMAIN		FENCE
	SUBDRAIN		BACK OF CURB
	DITCH		ELEVATION
	EXISTING		LEGEND - PLAN
	NEW		LEGEND - PLAN

	CONCRETE PAVEMENT
	ASPHALT PAVEMENT
	CONC. SIDEWALK/MED. SLAB
	PAVING STONE
	TOPSOIL & SOD
	GRAVEL
	RAMP CURB
	REMOVAL
	SWALE ELEVATION
	ASPHALT OVERLAY

LOCATION APPROVED UNDERGROUND STRUCTURES	
SUPV. U/G STRUCTURES COMMITTEE	DATE
NOTE: LOCATION OF UNDERGROUND STRUCTURES AS SHOWN ARE BASED ON THE BEST INFORMATION AVAILABLE BUT NO GUARANTEE IS GIVEN THAT ALL EXISTING UTILITIES ARE SHOWN OR THAT THE GIVEN LOCATIONS ARE EXACT. CONFIRMATION OF EXISTENCE AND EXACT LOCATION OF ALL SERVICES MUST BE OBTAINED FROM THE INDIVIDUAL UTILITIES BEFORE PROCEEDING WITH CONSTRUCTION.	
B.M. 66-001	ELEV. 233.425m
NO.	REVISIONS
0	ISSUED FOR TENDER 06.03.03 GWM
	DATE BY
	DATE 06.01.12

Stantec Consulting Ltd.
905 Waverley Street, Winnipeg, Manitoba
Tel 204-489-5900 Fax 204-453-9012

DESIGNED BY	VMM, TAG	CHECKED BY	KAR
DRAWN BY	TAG, VMM	APPROVED BY	GWM
HOR. SCALE:	1:500	AUTHORIZED BY:	DATE
VERTICAL:	1:20	R. FINGAS	06.03.03
		P. ENG.	
		BRIDGE PROJECTS ENGINEER	

ENGINEER'S SEAL	
ORIGINAL SEALED BY	G.W. MOURANT
P. ENG.	06.03.03
CONSULTANT DRAWING NO.	
I13703042-T29	

THE CITY OF WINNIPEG
PUBLIC WORKS DEPARTMENT
ENGINEERING DIVISION

Winnipeg

KENASTON UNDERPASS PROJECT
KENASTON BOULEVARD RECONSTRUCTION

SHEET 18 OF 52
CAD FILE DRAWING NUMBER ku-15-19-665.dwg
CITY DRAWING NUMBER P-3258-189

KENASTON BOULEVARD
HORIZONTAL & VERTICAL ALIGNMENT
STA 1+725 TO STA 1+975

APEGM
Certificate of Authorization
Stantec Consulting Ltd.
No. 1301 Expiry: April 30, 2006