

REMOVE EXISTING HONEYCOMB CONCRETE PAVERS. ADJUST HOLLAND PAVERS. INSTALL CONCRETE SIDEWALK (SD-228A)

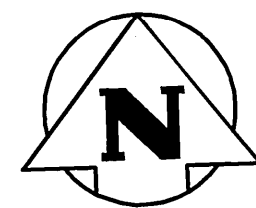
REMOVE EXISTING HONEYCOMB CONCRETE PAVERS. ADJUST HOLLAND PAVERS. INSTALL CONCRETE SIDEWALK (SD-228A)

REMOVE EXISTING HONEYCOMB CONCRETE PAVERS. ADJUST HOLLAND PAVERS. INSTALL CONCRETE SIDEWALK (SD-228A)

SEE DRAWING C0003

SEE DRAWING C0005

NOTE:
TO PROVIDE REQUIRED GEODETIC MONUMENT PROTECTION SERVICES, PLEASE CONTACT CITY OF WINNIPEG GEOMATICS BRANCH AT LEAST 3 WORKING DAYS IN ADVANCE OF THE CONSTRUCTION.
PHONE: 986-4826
PLEASE QUOTE GEOMATICS JOB NUMBER: 20060270



PRELIMINARY DRAWING ONLY
NOT TO BE USED FOR CONSTRUCTION
(REMOVE WHEN DRAWING IS FINAL)

APEGN
Certificate of Authorization
Wardrop Engineering Inc.
No. 195 Expiry: April 30, 2007

150 WM	WATERMAIN	—	BEND	15.240	LEGAL DIMENSION
400 FM	FEEDERMAIN	—	TEE		SURVEY BAR
300 LDS	LAND DRAINAGE SEWER	○	MANHOLE		SIDEWALK RAMP
250 WWS	WASTEWATER SEWER	□	CATCHBASIN		GAS
300 CS	COMBINED SEWER	▽	CURB INLET		HYDRO
200 FCM	FORCEMAIN	⊕	ADDRESS		ASPHALT REMOVAL
	JUNCTIONS	⊕	HYDRO POLE		ASPHALT
	HYDRANT	⊕	LIGHT STANDARD		SIDEWALK
	VALVE	⊕	TRAFFIC SIGNAL		CONCRETE PAVEMENT
	REDUCER	⊕	TREE		CURB
EXISTING	LEGEND-PLAN	PROPOSED	EXISTING	LEGEND-PLAN	PROPOSED

LOCATION APPROVED UNDERGROUND STRUCTURES

SUPV. U/G STRUCTURES DATE COMMITTEE

NOTE: LOCATION OF UNDERGROUND STRUCTURES AS SHOWN ARE BASED ON THE BEST INFORMATION AVAILABLE. BUT NO GUARANTEE IS GIVEN THAT ALL EXISTING UTILITIES ARE SHOWN OR THAT THE GIVEN LOCATIONS ARE EXACT. CONFIRMATION OF EXISTENCE AND EXACT LOCATION OF ALL SERVICES MUST BE OBTAINED FROM THE INDIVIDUAL UTILITIES BEFORE PROCEEDING WITH CONSTRUCTION.

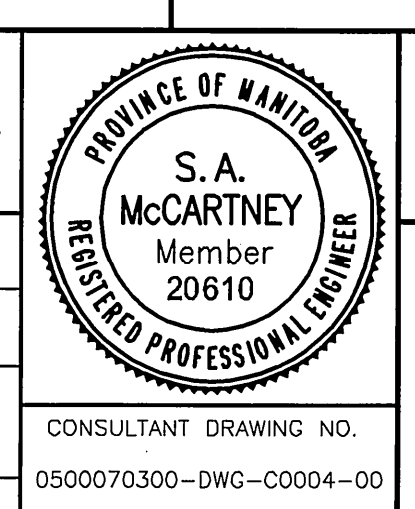
B.M. CITY OF WINNIPEG 37-048
ELEV. 232.699m

F.B. #2090

00	ISSUED FOR TENDER	06.04.27	SAM
A	ISSUED FOR APPROVAL	06.04.12	SAM
NO.	REVISIONS	DATE	BY

WARDROP Engineering Inc.

DESIGNED BY	PJK	CHECKED BY	SAM
DRAWN BY	GMD	APPROVED BY	
HOR. SCALE:	1 : 250	RELEASED FOR CONSTRUCTION	
VERTICAL:	1 : 10	DATE	06.03.24



THE CITY OF WINNIPEG
PUBLIC WORKS DEPARTMENT
ENGINEERING DIVISION

CONCRETE REPAIRS AND ASPHALT OVERLAY

BROADWAY
38m EAST OF SPENCE STREET TO
20m EAST OF GOOD STREET

CITY DRAWING NUMBER
P-3266-4
SHEET 4 OF 5
C0004

CONSULTANT DRAWING NO.
0500070300-DWG-C0004-00