

NORTH

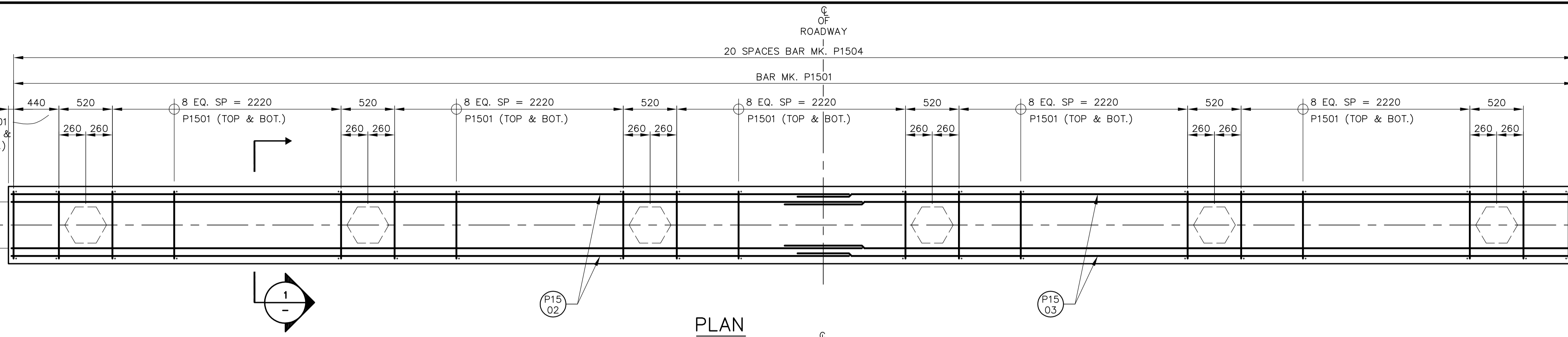
NORTH



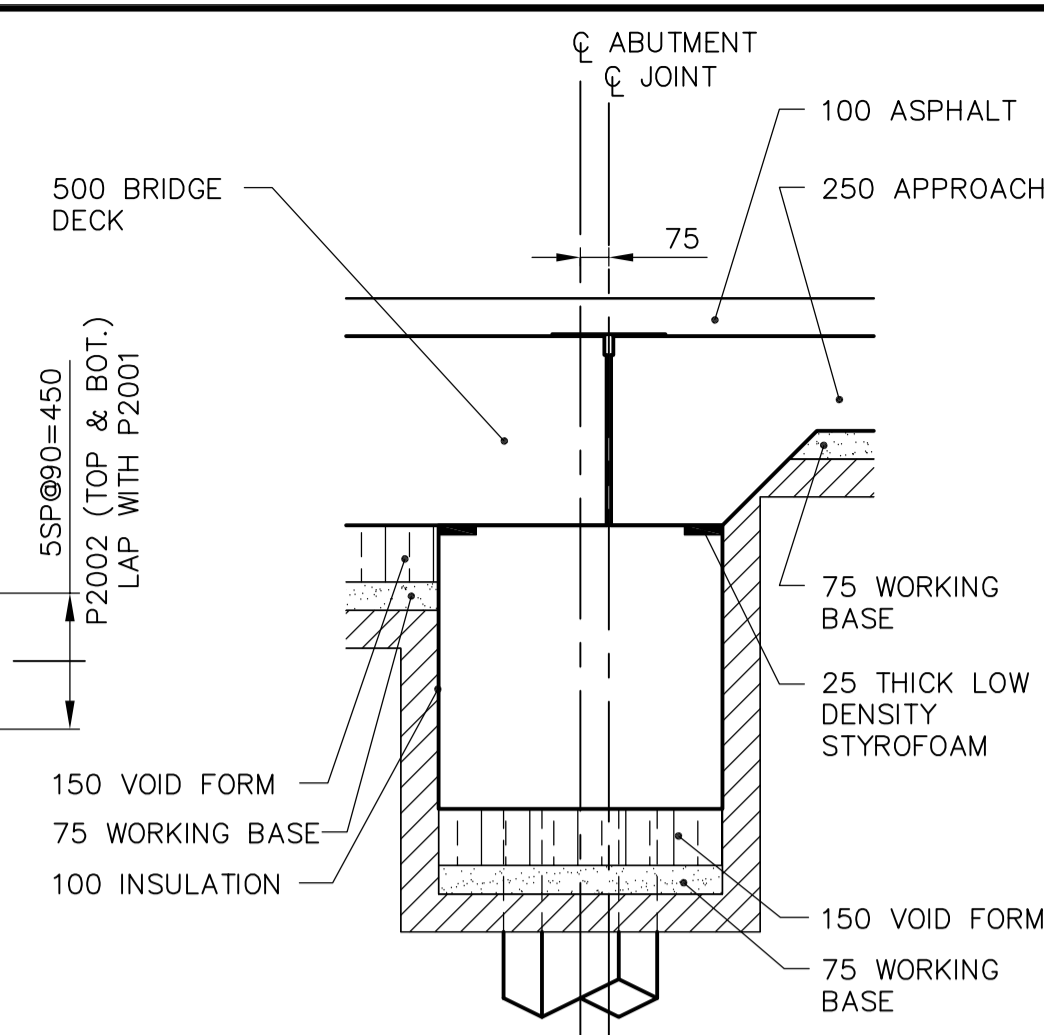
NORTH

SOUTH

SOUTH

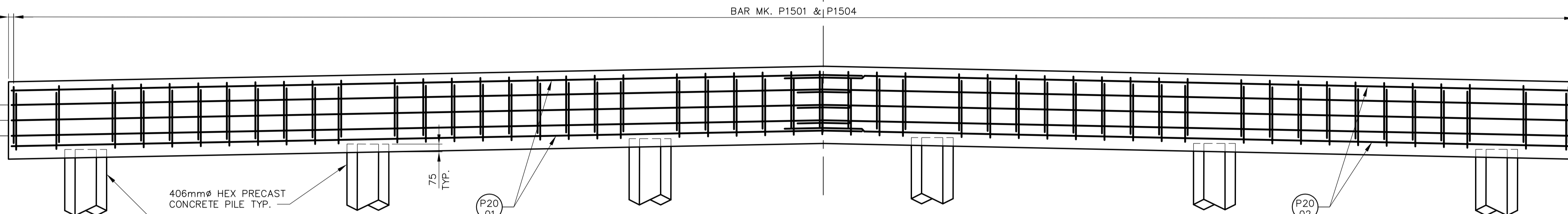


PLAN

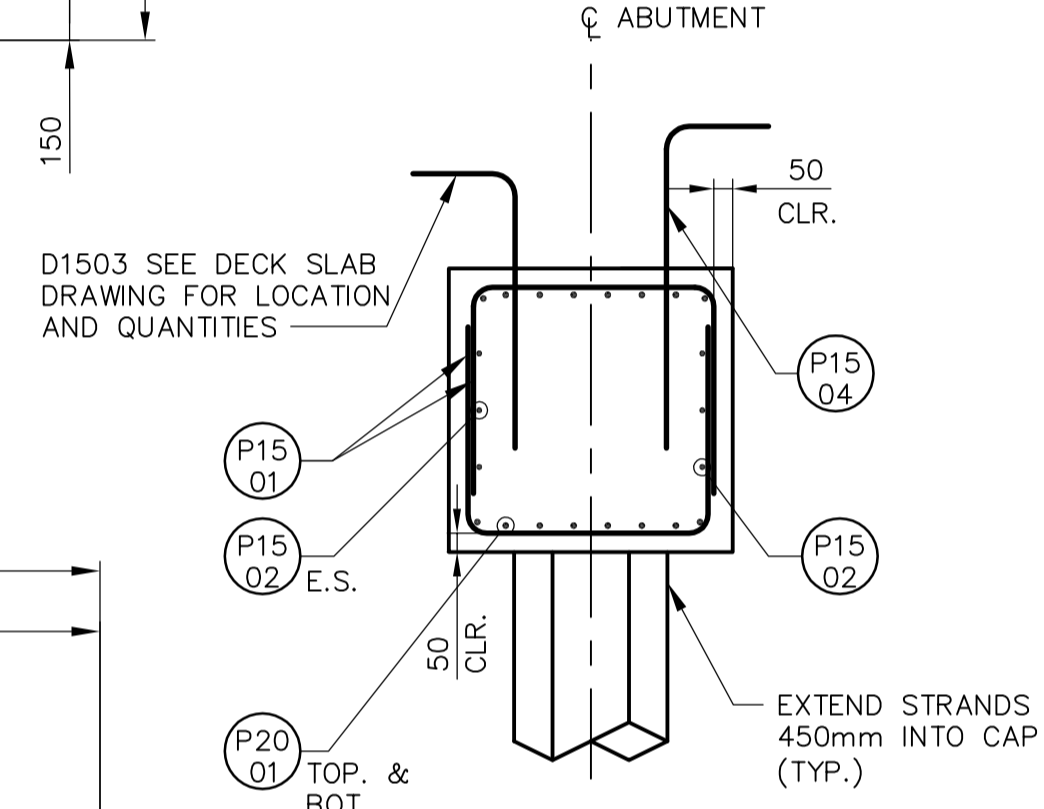


A DETAIL
SCALE 1:20

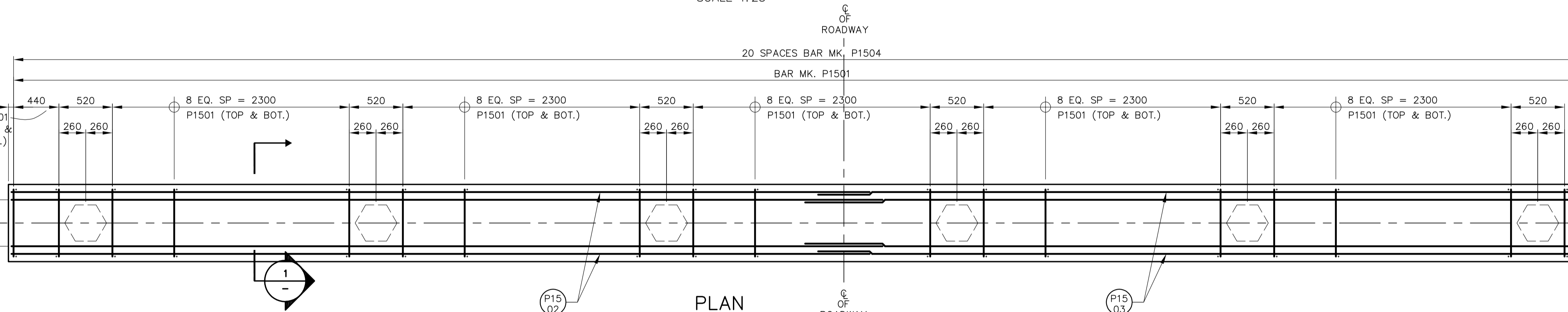
NOTE: EACH PILE SHALL HAVE A MINIMUM (UNFACTORED) FLEXURAL CAPACITY OF 100 kN.m.



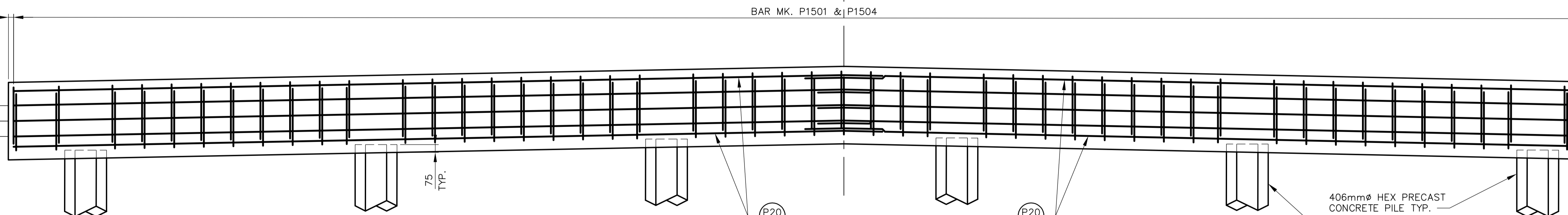
ELEVATION
SCALE 1:25



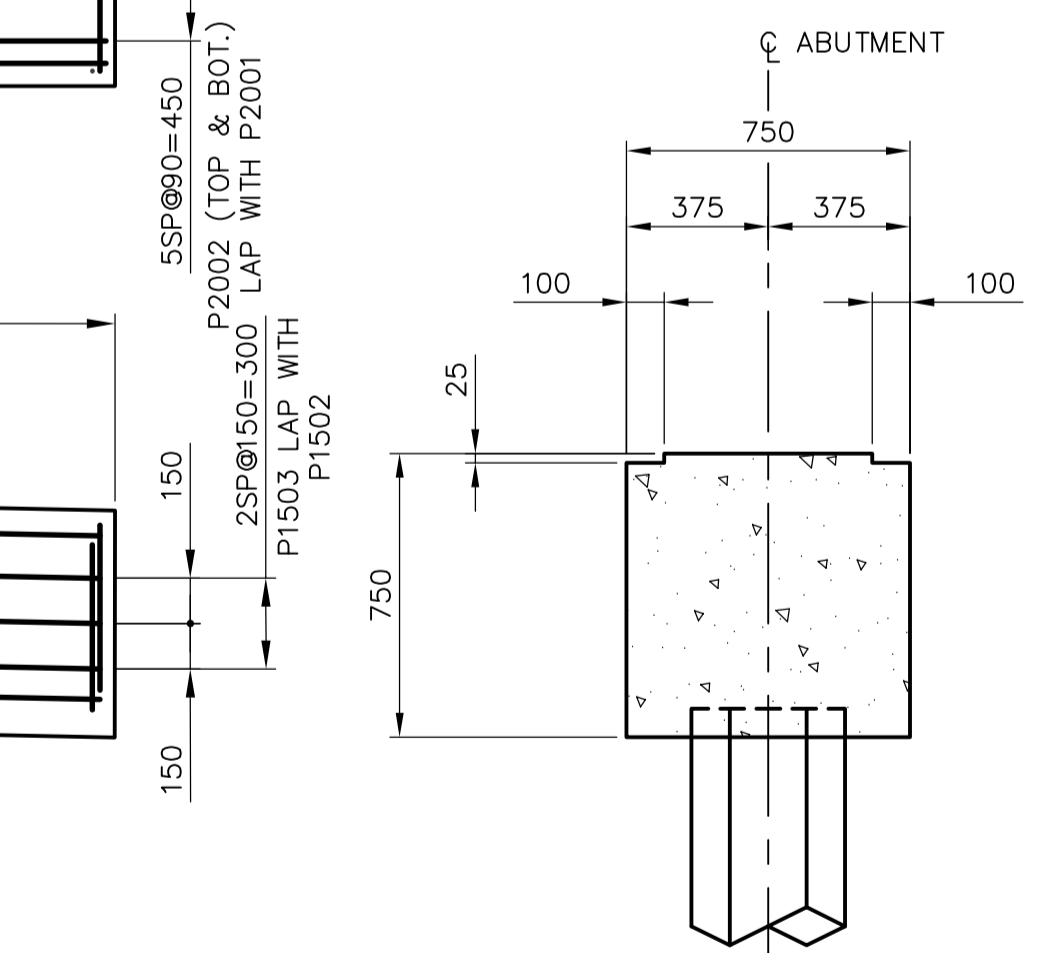
1 SECTION
SCALE 1:20



PLAN

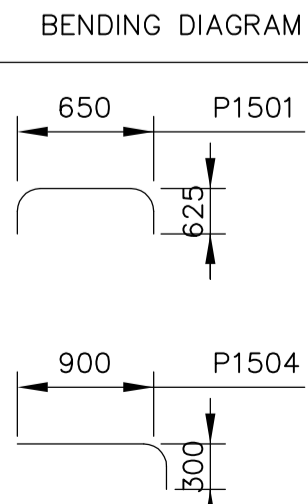


ELEVATION
SCALE 1:25



2 SECTION
SCALE 1:20

| BILL OF REINFORCING STEEL FOR BOTH ABUTMENTS | | | | | | | |
|---|-----|--------|------|-----------|-----|--------|----------------------|
| STRAIGHT BARS | | | | BENT BARS | | | |
| MK. | No. | LENGTH | MASS | MK. | No. | LENGTH | MASS |
| P1502 | 12 | 8400 | 158 | P1501 | 196 | 1900 | 584 |
| P1503 | 12 | 7800 | 148 | P1504 | 42 | 1200 | 79 |
| P2001 | 24 | 8500 | 480 | | | | |
| P2002 | 24 | 8000 | 452 | | | | |
| TOTAL MASS OF REINFORCING STEEL | | | | | | | 1901 kg. |
| TOTAL VOLUME OF STRUCTURAL CONCRETE (ABUTMENTS) | | | | | | | 17.31 m ³ |
| TOTAL NUMBER OF HEX. PRECAST PILE | | | | | | | 12 |



- NOTES:
- ALL DIMENSIONS GIVEN ARE OUT TO OUT, EXCEPT RADI ARE INSIDE DIMENSIONS.
 - ALL REINFORCING STEEL SHALL BE DEFORMED REINFORCING, UNLESS NOTED OTHERWISE IN THE ABOVE BILL OF REINFORCING STEEL.
 - ALL REINFORCING STEEL SHALL CONFORM TO CAN/CSA G30.16-M92 GRADE 400W UNLESS NOTED OTHERWISE IN THE ABOVE BILL OF REINFORCING STEEL.
 - LIKE BARS SHALL BE BUNDLED, SECURELY TIED AND IDENTIFIED AS TO MARK AND SITE NO. BY APPROPRIATE MEANS. ALL OTHER ITEMS SHALL BE IDENTIFIED IN A SIMILAR FASHION.

Released to the City of Winnipeg for Tendering Purposes
 ORIGINAL SIGNED
 Eric Christiansen P.Eng.
 Director of Highway Planning & Design
 Manitoba Transportation & Government Services
 Date: MAY 16, 2006
 MTGS Plan No. 7161



| B.M. | ELEV. | DATE | BY |
|------|-------------------|----------|----|
| 00 | ISSUED FOR TENDER | 06/05/16 | KC |
| | NO. REVISIONS | | |

| DESIGNED BY | CHECKED BY |
|-------------|-------------------------------|
| AP | EBL |
| DRAWN BY | APPROVED BY |
| KC | AHL |
| SCALE: | RELEASED FOR CONSTRUCTION BY: |
| AS NOTED | R. SOROKOWSKI |
| DATE | DATE |
| 06/04/07 | May 16, 2006 |

ENGINEER'S SEAL
 ORIGINAL SIGNED BY
 ASNEE POCHANART
 May 16, 2006
 CONSULTANT DRAWING NO.
 WN-S0451

THE CITY OF WINNIPEG
 WATER AND WASTE DEPARTMENT
 ENGINEERING DIVISION

WINNIPEG WATER TREATMENT
 PROGRAM - PROVINCIAL ROAD #207 UPGRADE

STRUCTURAL PR #207 BRIDGE
 ABUTMENT REINFORCING AND CONCRETE DETAILS

CITY FILE NUMBER
 SHEET OF
 CITY DRAWING NUMBER
 1-060N-A-80451-001-00D