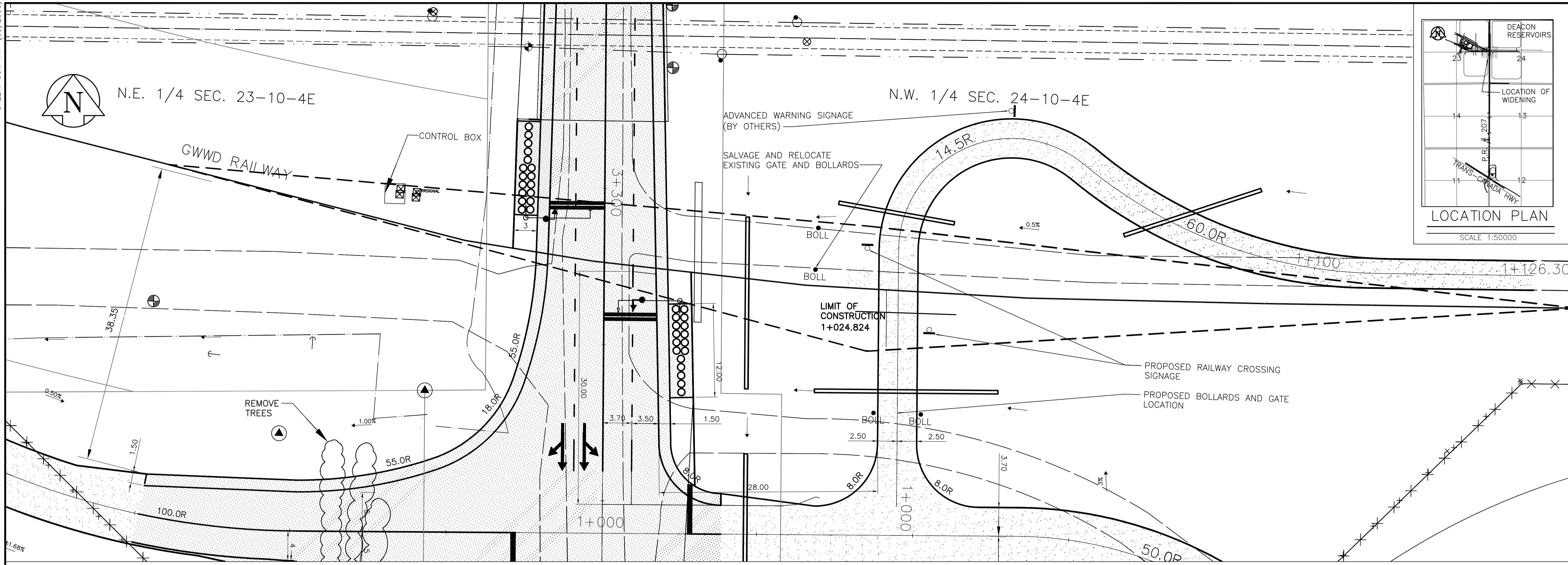
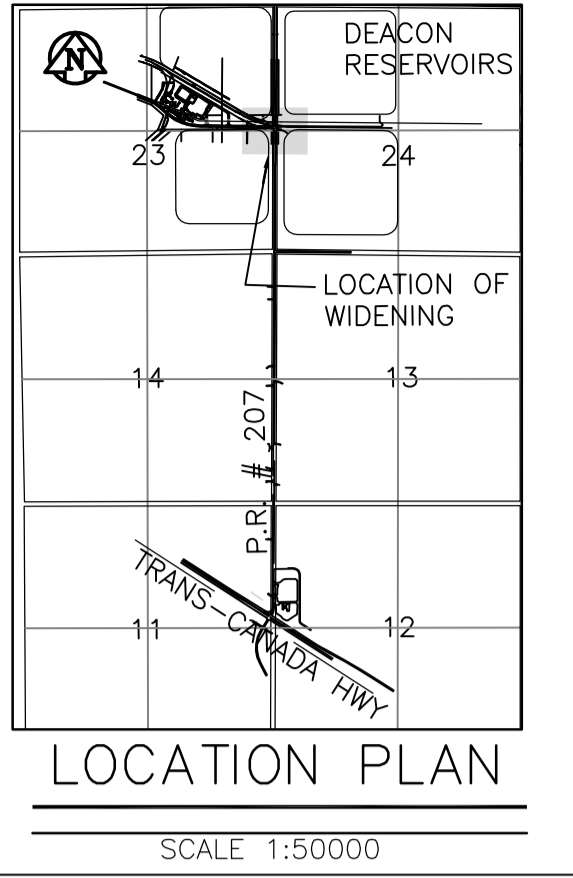
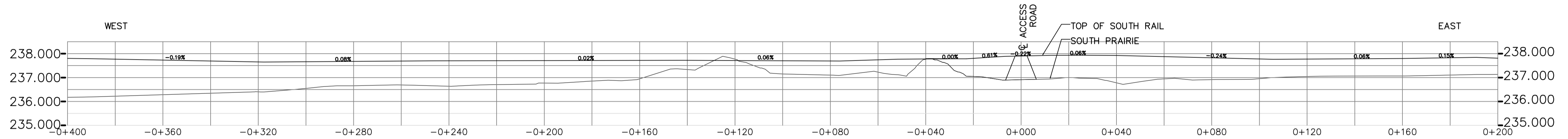


N.E. 1/4 SEC. 23-10-4E

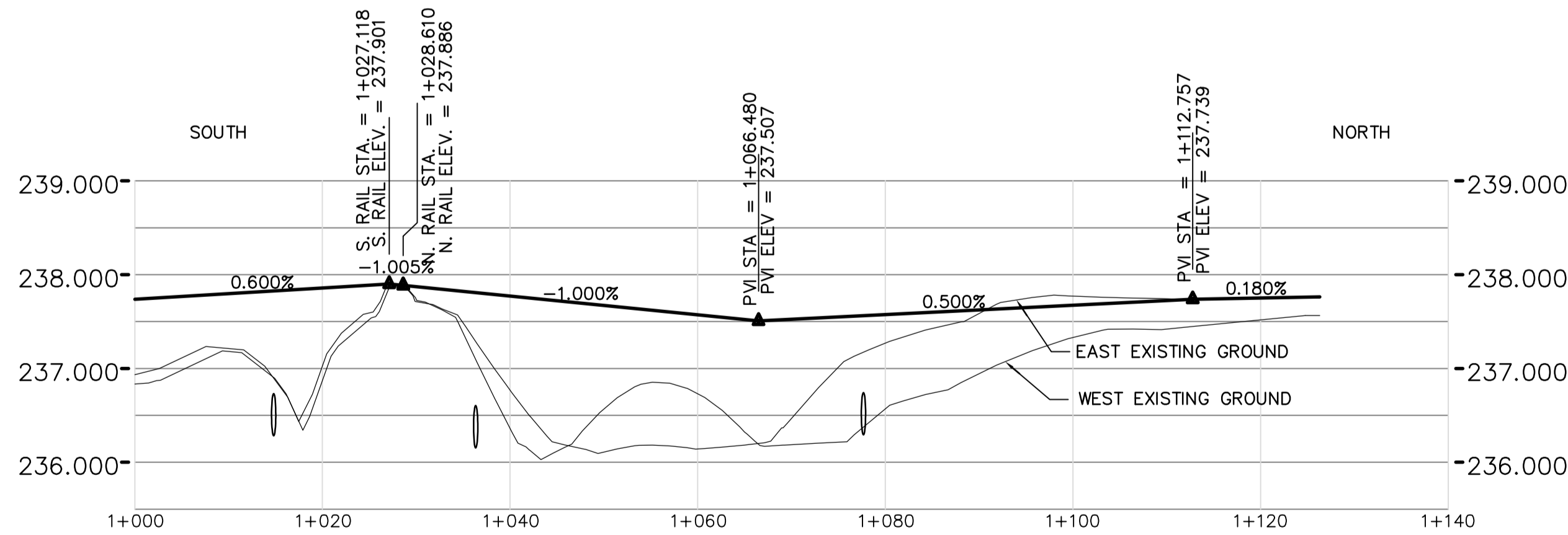
N.W. 1/4 SEC. 24-10-4E



PLAN
SCALE 1:250

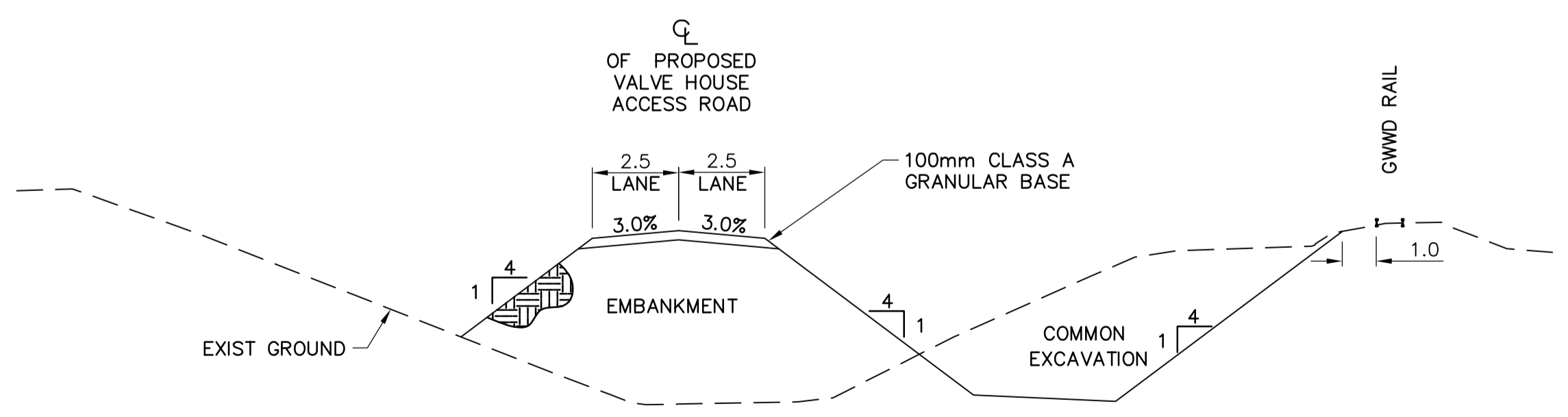


PROFILE - GWWD RAILWAY
SCALE: HOR. 1:1000 VERT. 1:100



PROFILE - CELL 2 ACCESS ROAD
SCALE: HOR. 1:500 VERT. 1:50

Released to the City of Winnipeg for Tendering Purposes
ORIGINAL SIGNED
Eric Christiansen P.Eng.
Director of Highway Planning & Design
Manitoba Transportation & Government Services
Date: MAY 16, 2006
MTGS Plan No. 7161



TYPICAL CROSS SECTION OF ACCESS ROAD IN THE VICINITY OF THE RAILWAY
SCALE: HOR. 1:150 VERT. 1:50

150 mm W.M. ◇ HYDRANT	150 mm W.M. + VALVE	300mm L.D.S. □ LAND DRAINAGE SEWER	250mm W.W.S. □ WASTEWATER SEWER	MANHOLE ○	CATCH BASIN □	CURB INLET ▽	ANODE -	CULVERT -	GAS -	HYDRO M.T.S. -	CONCRETE -	ASPHALT -	PROPERTY LINE -	SURVEY BAR -	ELEVATION -	TREE -	GRANULAR SLOPE -	LIGHT STANDARD ANCHOR -	HYDRO POLE -	CONTOURS -	RAIL X-ING SIGNAL -	RAILWAY TRACK -	DITCH -	FENCE -	ROAD CLOSED -	
EXISTING	LEGEND - PLAN	PROPOSED	EXISTING	LEGEND - PLAN	PROPOSED	EXISTING	LEGEND - PLAN	PROPOSED	EXISTING	LEGEND - PLAN	PROPOSED	EXISTING	LEGEND - PLAN	PROPOSED	EXISTING	LEGEND - PLAN	PROPOSED	EXISTING	LEGEND - PLAN	PROPOSED	EXISTING	LEGEND - PLAN	PROPOSED	EXISTING	LEGEND - PLAN	PROPOSED



B.M. ELEV.	CH2MHILL Frederickson Cooper ARCHITECTS	EarthTech A Terra International Ltd. Company	ENGINEER'S SEAL ORIGINAL SIGNED BY JEFF CRANG May 16, 2006	THE CITY OF WINNIPEG WATER AND WASTE DEPARTMENT ENGINEERING DIVISION WINNIPEG WATER TREATMENT PROGRAM - PROVINCIAL ROAD #207 UPGRADE	CITY FILE NUMBER SHEET OF
DESIGNED BY JC	CHECKED BY JC	SCALE: AS NOTED	RELEASER FOR CONSTRUCTION BY: R. SOROKOWSKI	CIVIL RAILWAY CROSSING PLAN - CELL 2 ACCESS ROAD	CITY DRAWING NUMBER 1-0601A-C0173-001-000
00 ISSUED FOR TENDER NO. REVISIONS	06/05/16 PAP DATE BY	2006/03/28 DATE	DATE May 16, 2006	CONSULTANT DRAWING NO. WN-CO173	