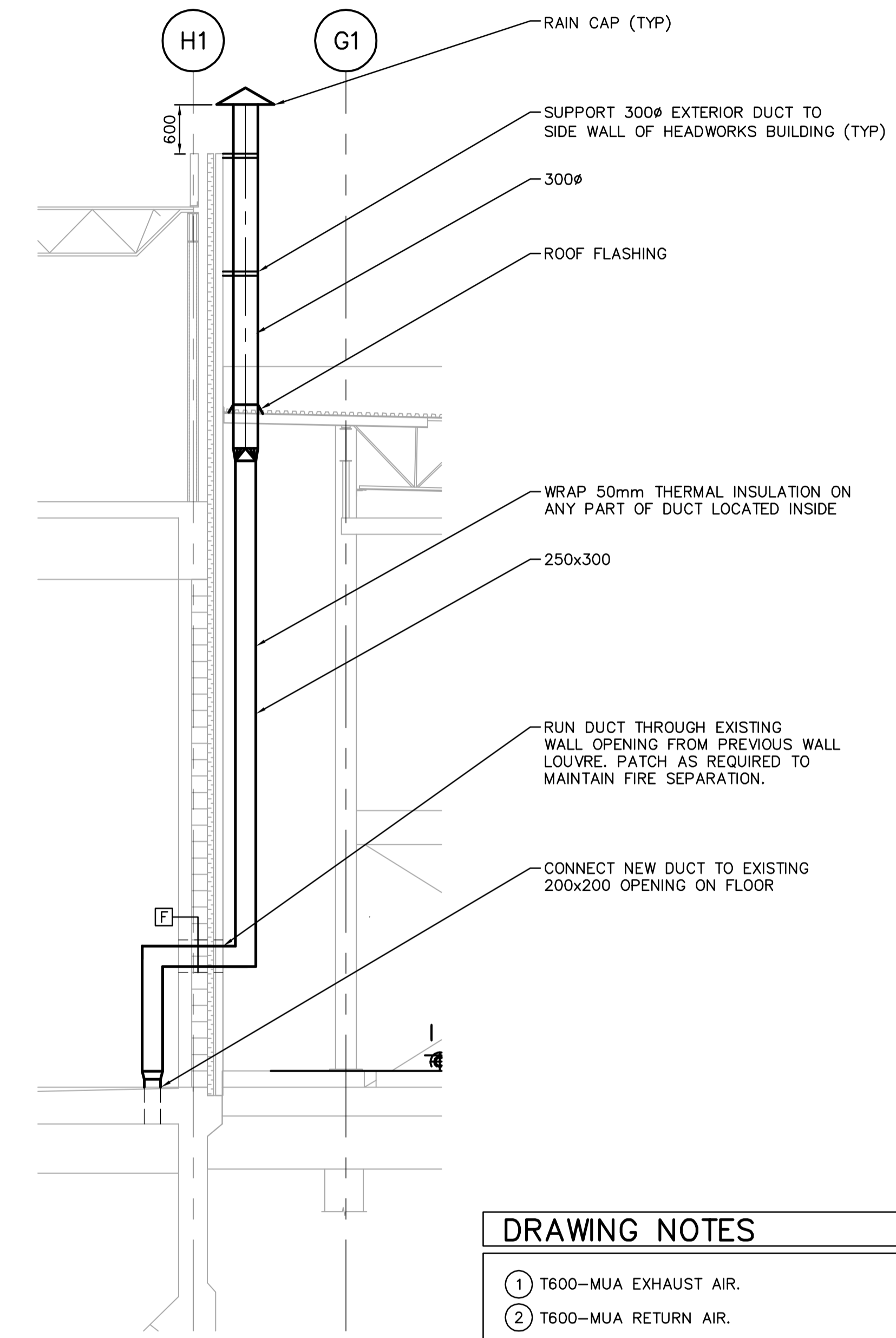


6 SECTION  
TM2.02 SCALE 1:50



7 SECTION  
TM2.02 SCALE 1:50

REFER TO DRAWING HM2.01 FOR CONTINUATION

**DRAWING NOTES**

- ① T600-MUA EXHAUST AIR.
- ② T600-MUA RETURN AIR.
- ③ EXHAUST DUCT OF 2 DAF TANKS.
- ④ TYPICAL FLEXIBLE DUCT CONNECTIONS.
- ⑤ MOTORIZED DAMPER.
- ⑥ ALL INTERIOR EXHAUST DUCTWORK FROM T600-MUA SHALL HAVE 50mm THERMAL EXTERNAL INSULATION AND ALUMINUM JACKET.

**GENERAL NOTES**

- 1. COORDINATE WITH OTHER TRADES SO AS TO PREVENT CONFLICTS.
- 2. ALL DUCTWORK SHALL BE SUPPORTED AND SUSPENDED AS PER SPECIFICATIONS AND LOCAL CODES (SEE DETAILS).
- 3. ALL DUCTWORK TO BE STAINLESS STEEL CONSTRUCTION.



B.M. ELEV.		 A Tyco International Ltd. Company		ENGINEER'S SEAL	
				ORIGINAL SIGNED BY A. BURACHYNSKY 2006/04/26	
DESIGNED BY	LJW/DC	CHECKED BY	PVL	CONSULTANT DRAWING NO. TM4.03	
DRAWN BY	LJW/DL	APPROVED BY	JEH		
HOR. SCALE: 1:50		RELEASED FOR CONSTRUCTION BY:		CITY FILE NUMBER	
VERTICAL SCALE:		J. VEILLEUX			
NO.	REVISIONS	DATE	BY	DATE	2006/01/04
00	ISSUED FOR TENDER	06/04/26	DC	DATE	2006/04/26

 <b>THE CITY OF WINNIPEG</b> WATER AND WASTE DEPARTMENT ENGINEERING DIVISION		CITY FILE NUMBER
WEWPCC BIOLOGICAL NUTRIENT REMOVAL UPGRADE CONTRACT 3		SHEET OF
MECHANICAL AREA T - DAF THICKENER BUILDING SECTION		CITY DRAWING NUMBER