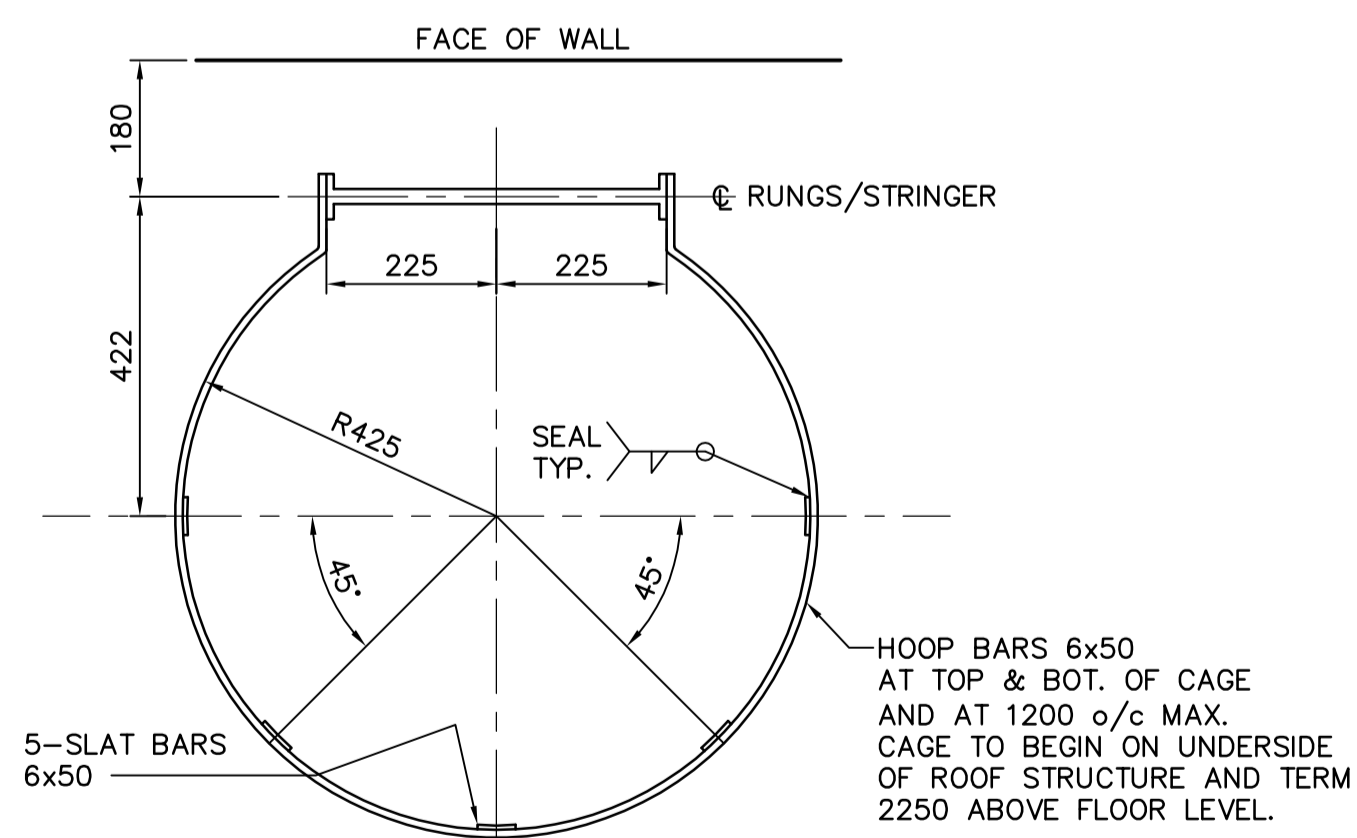
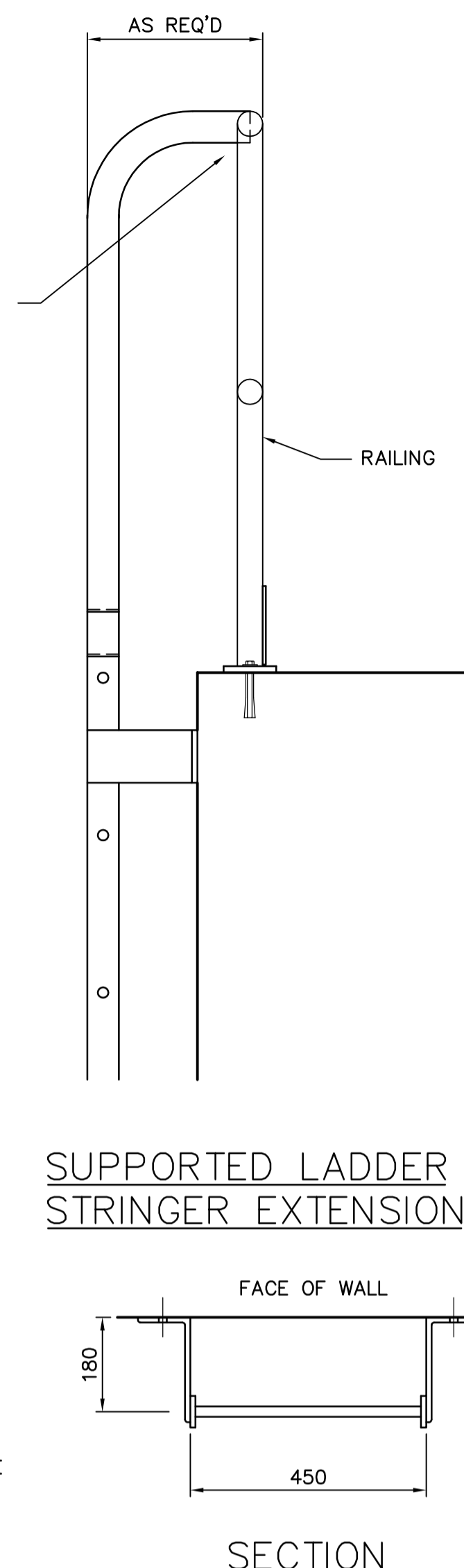


UNSUPPORTED LADDER STRINGER EXTENSION

A TYPICAL LADDER DETAILS
STD 1:10

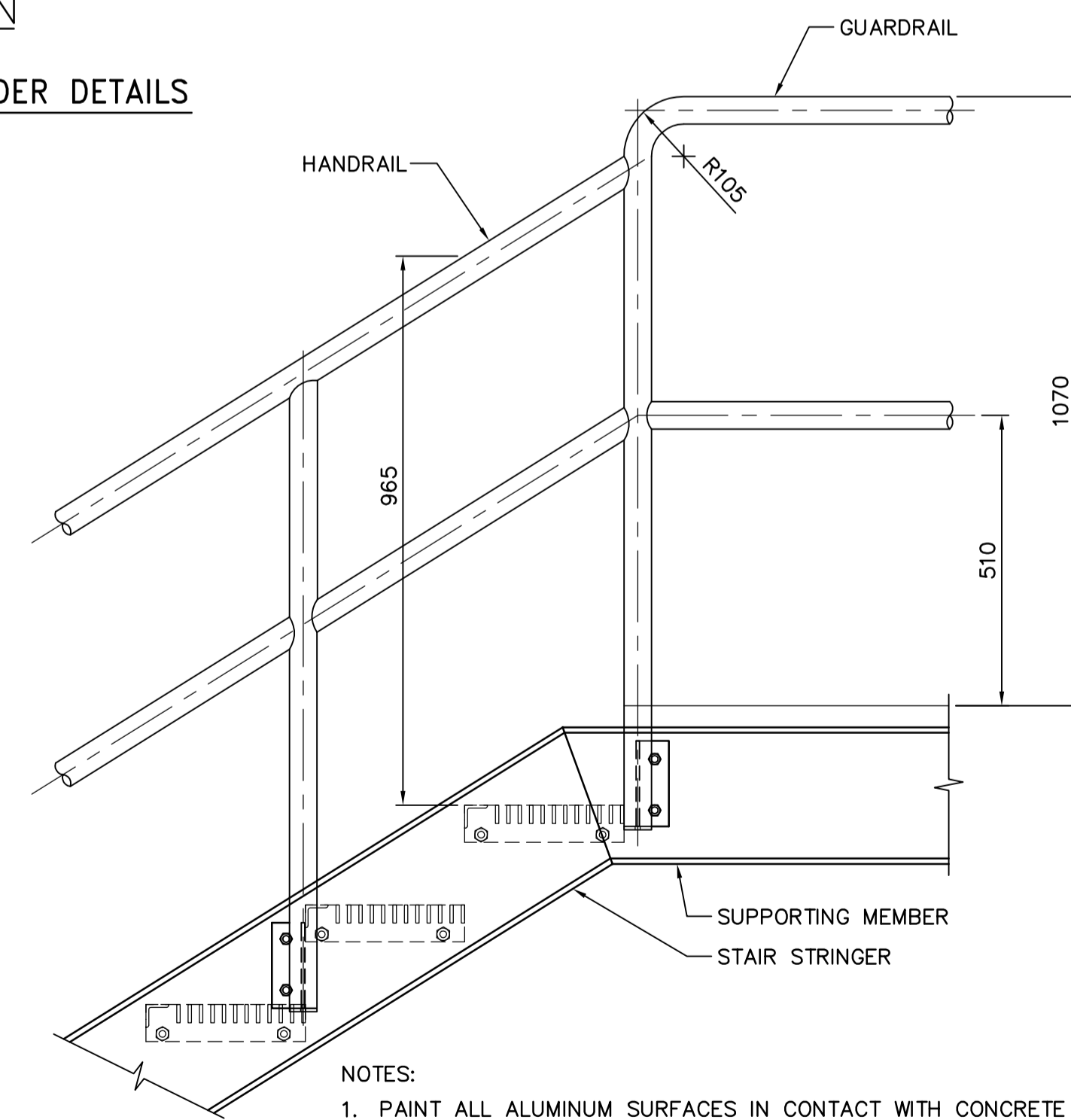


B TYPICAL LADDER SAFETY CAGE
STD 1:10

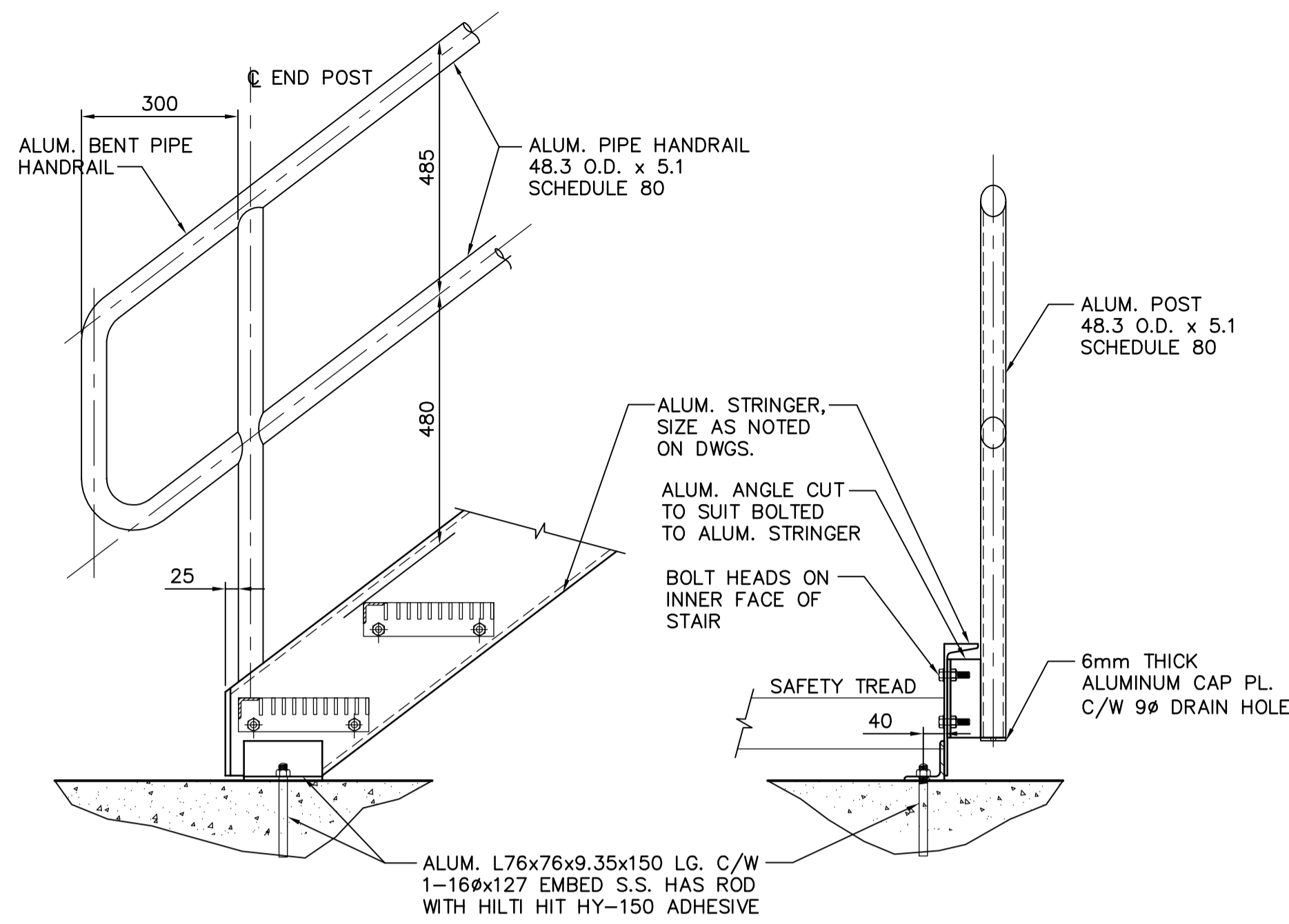


SUPPORTED LADDER STRINGER EXTENSION

SECTION

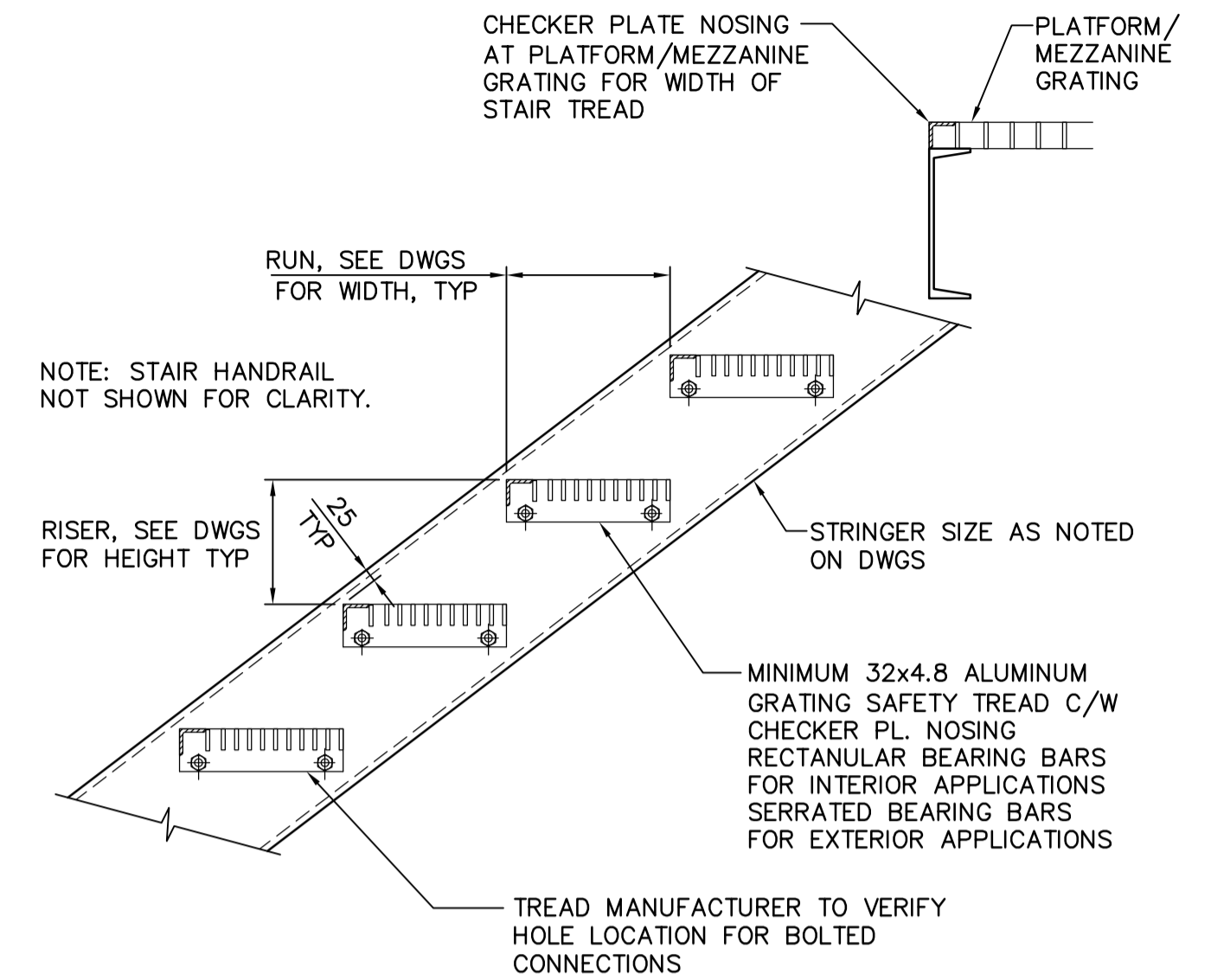


F TYPICAL TRANSITION DETAIL
STD 1:10

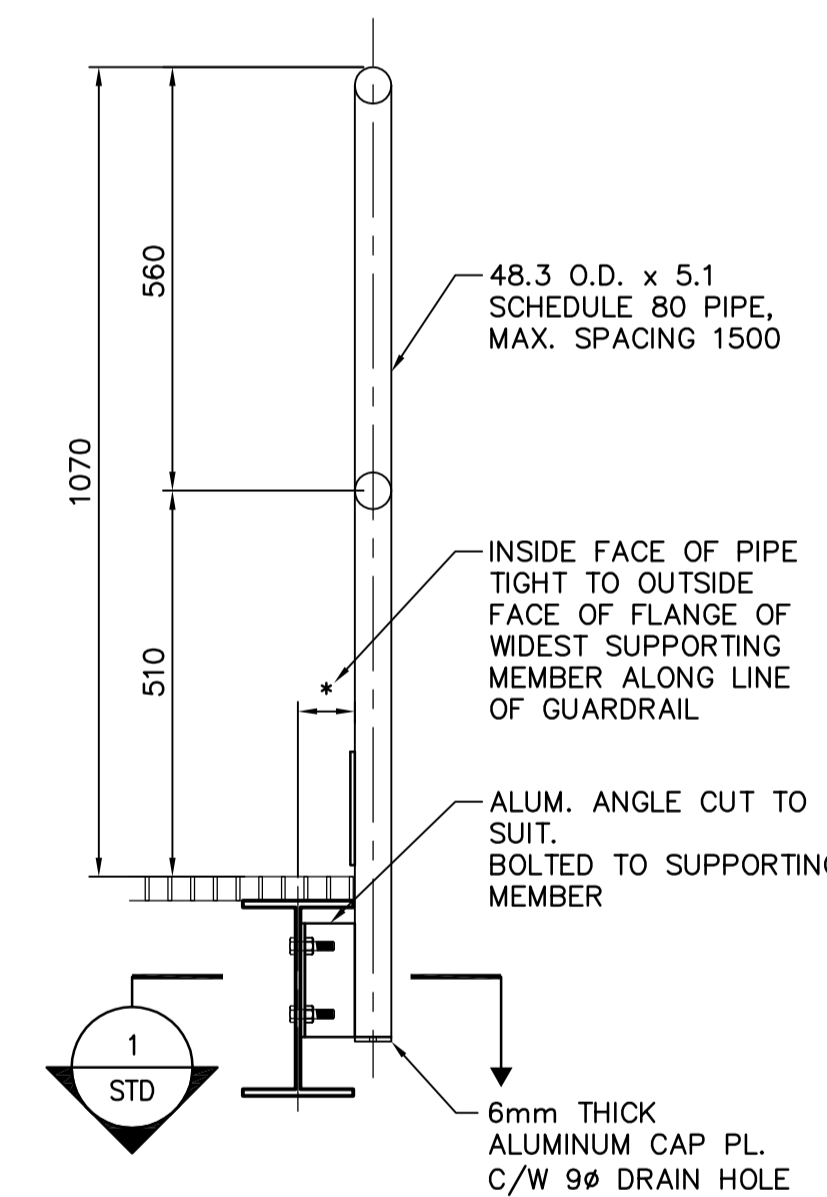


- NOTES:
1. PAINT ALL ALUMINUM SURFACES IN CONTACT WITH CONCRETE WITH TWO COATS OF ALKALI-RESISTANT BITUMINOUS PAINT.
2. ALL MATERIAL TO BE ALUMINUM UNLESS NOTED OTHERWISE.

C TYPICAL STAIR BASE PLATE & RAILING END DETAIL
STD 1:20

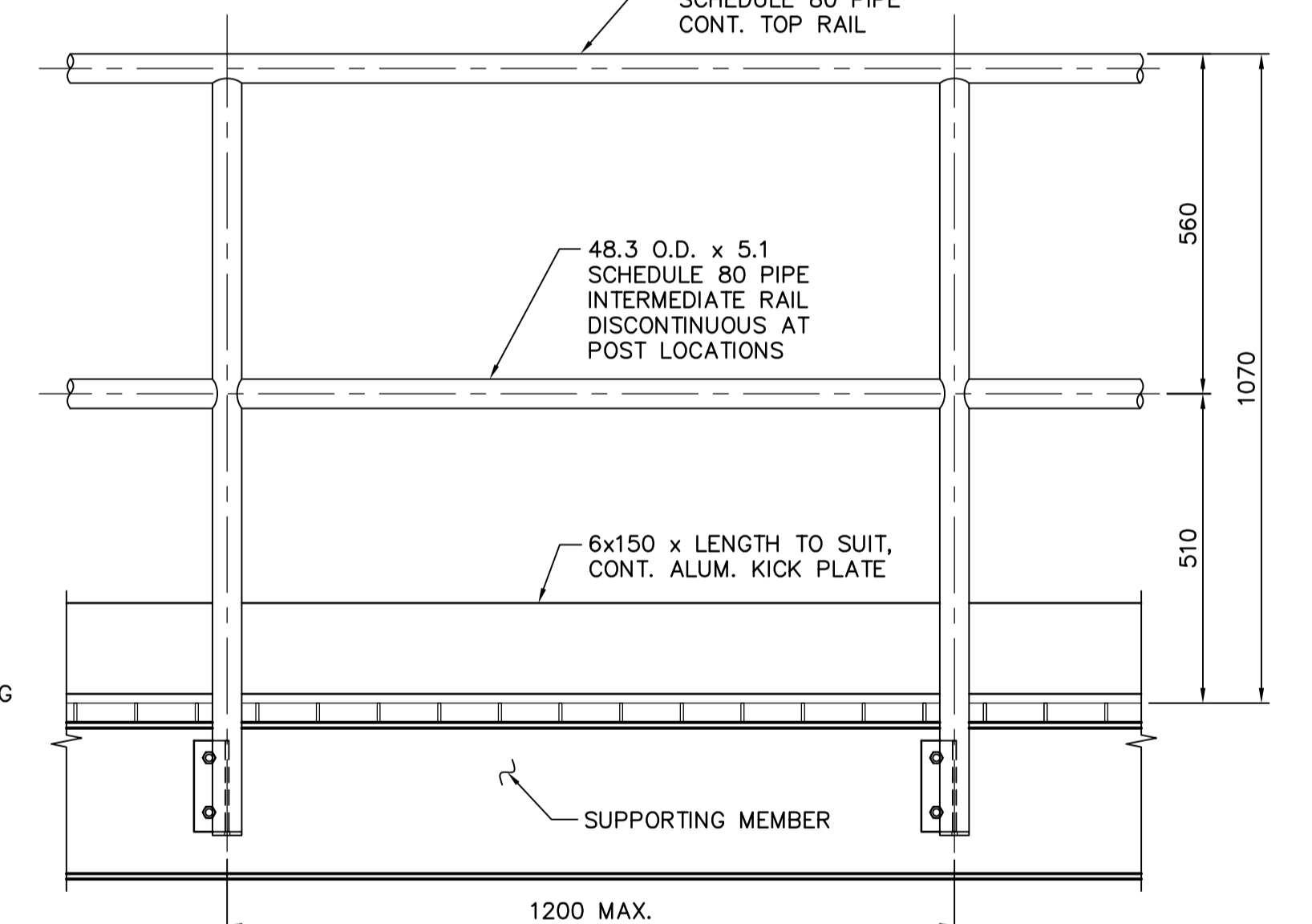


D TYPICAL GRATING STAIR DETAIL
STD 1:20



- NOTES:
1. PAINT ALL ALUMINUM SURFACES IN CONTACT WITH CONCRETE WITH TWO COATS OF ALKALI-RESISTANT BITUMINOUS PAINT.
2. ALL MATERIAL TO BE ALUMINUM UNLESS NOTED OTHERWISE.

1 SECTION
STD 1:5



ELEVATION

E TYPICAL GUARDRAIL/HANDRAIL DETAILS
STD 1:10

APEGM
Certificate of Authorization
Earth Tech Canada Inc.
No. 730 Expiry: April 30, 2006

B.M. ELEV.		EarthTech A tyco International Ltd. Company		ENGINEER'S SEAL	
DESIGNED BY	ARA	CHECKED BY		ORIGINAL SIGNED BY	J. BETKE
DRAWN BY	NDH	APPROVED BY	JEH	DATE	2006/04/26
HOR. SCALE:		RELEASED FOR CONSTRUCTION BY:	J. VEILLEUX	CONSULTANT DRAWING NO.	LS1.06
VERTICAL SCALE:		DATE	2006/04/26	DATE	2006/04/26
NO. REVISIONS		DATE		DATE	
00	ISSUED FOR TENDER	06/04/26	KK		

THE CITY OF WINNIPEG WATER AND WASTE DEPARTMENT ENGINEERING DIVISION		CITY FILE NUMBER
WEWPCC BIOLOGICAL NUTRIENT REMOVAL UPGRADE CONTRACT 3		SHEET OF
STRUCTURAL AREA L - GENERAL AND SITEWORKS STANDARD DETAILS		CITY DRAWING NUMBER