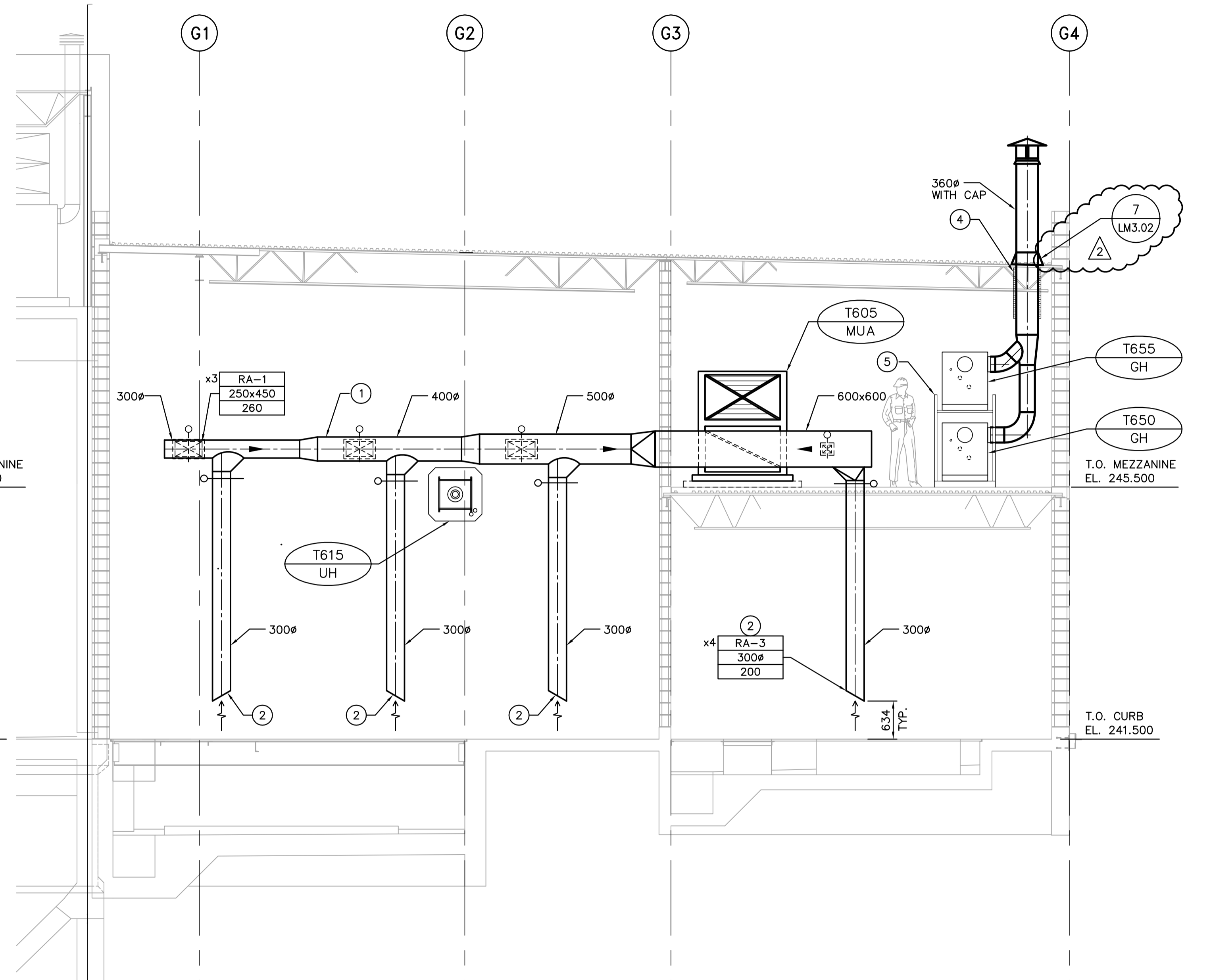


4 SECTION
TM2.02 SCALE 1:50



5 SECTION
TM2.02 SCALE 1:50

APECM
Certificate of Authorization
Earth Tech Canada Inc.
No. 730 Expiry: April 30, 2006

GENERAL NOTES

- COORDINATE WITH OTHER TRADES SO AS TO PREVENT CONFLICTS.
- ALL DUCTWORK SHALL BE SUPPORTED AND SUSPENDED AS PER SPECIFICATIONS AND LOCAL CODES. (SEE DETAILS)
- ALL DUCTWORK TO BE STAINLESS STEEL.

DRAWING NOTES

- | | |
|---|---|
| <p>① RETURN AIR TO T605-MUA.</p> <p>② 13mm SQUARE WIRE MESH.</p> <p>③ PROVIDE 50mm EXTERNAL THERMAL INSULATION FOR A FULL DISTANCE.</p> <p>④ PROVIDE 50mm EXTERNAL THERMAL INSULATION.</p> <p>⑤ BOILER FRAME.</p> <p>⑥ 400Ø GOOSENECK INTAKE ON ROOF c/w MOTORIZED DAMPER.</p> <p>⑦ 400x400 RELIEF AIR DUCT RISING TO RELIEF AIR HOOD ON ROOF c/w BACKDRAFT DAMPER. TERMINATE INTAKE OPENING APPROX. 600mm BELOW ROOF DECK.</p> | <p>⑧ MECHANICAL CONTRACTOR TO PROVIDE 300 HIGH STEEL PLATFORM FOR T630-CU TO SIT ON. UNIT AND PLATFORM SHALL BE SECURELY MOUNTED TO ROOF.</p> <p>⑨ FLEXIBLE CONNECTION. TYPICAL.</p> <p>⑩ REFRIGERANT LINES DOWN FROM CONDENSING UNIT TO COOLING COIL.</p> <p>⑪ BIRD SCREEN INSTALLED AT AIR INLET.</p> |
|---|---|

B.M. ELEV.	<p>EarthTech A Tyco International Ltd. Company</p>		ENGINEER'S SEAL	
			DESIGNED BY: AB/LJW	CHECKED BY: PVL
	DRAWN BY: LJW/DL	APPROVED BY: JEH	2006/04/26	
02 21-2006 ADDENDUM 6 06/07/04 DC	HOR. SCALE: 1:50		RELEASED FOR CONSTRUCTION BY: J. VEILLEUX	
01 21-2006 ADDENDUM 3 06/05/19 LJW	VERTICAL SCALE:		CONSULTANT DRAWING NO. TM4.02	
00 ISSUED FOR TENDER 06/04/26 DC	DATE: 2006/01/04	DATE: 2006/04/26	CITY FILE NUMBER	
NO. REVISIONS	DATE	BY	SHEET OF	
			CITY DRAWING NUMBER	

THE CITY OF WINNIPEG
WATER AND WASTE DEPARTMENT
ENGINEERING DIVISION

WEWPC
BIOLOGICAL NUTRIENT REMOVAL UPGRADE
CONTRACT 3

MECHANICAL
AREA T - DAF THICKENER BUILDING
SECTIONS