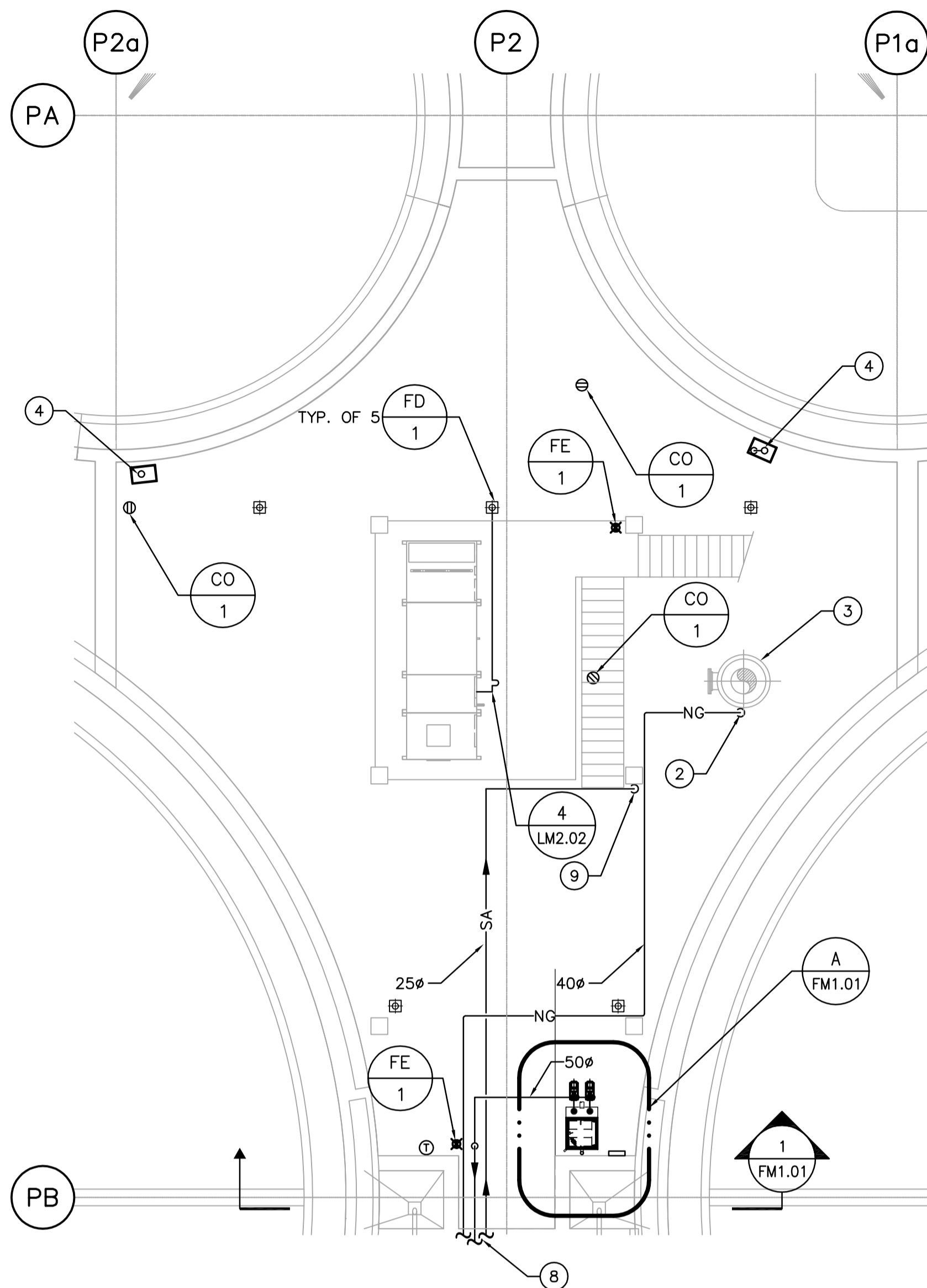
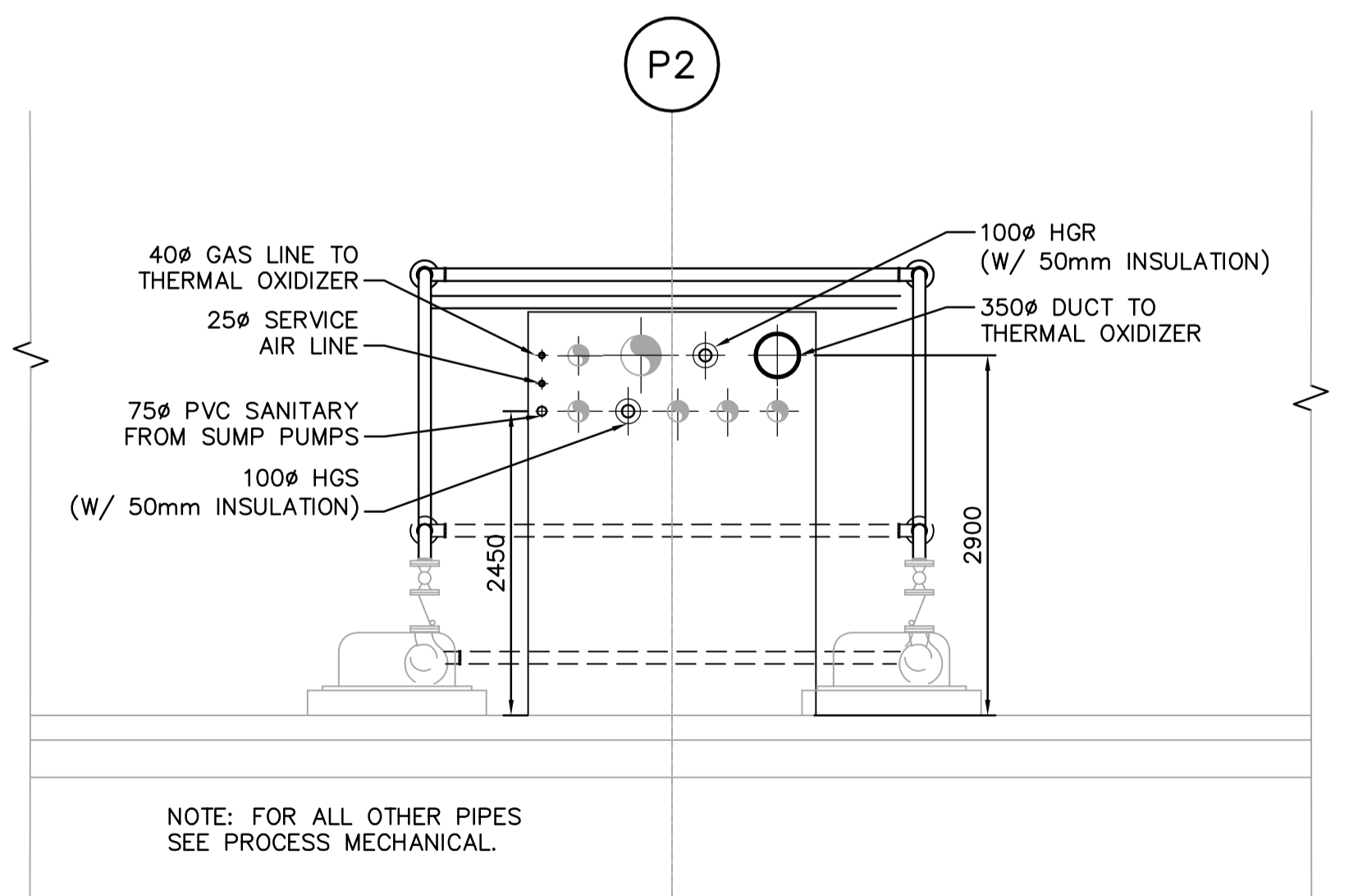
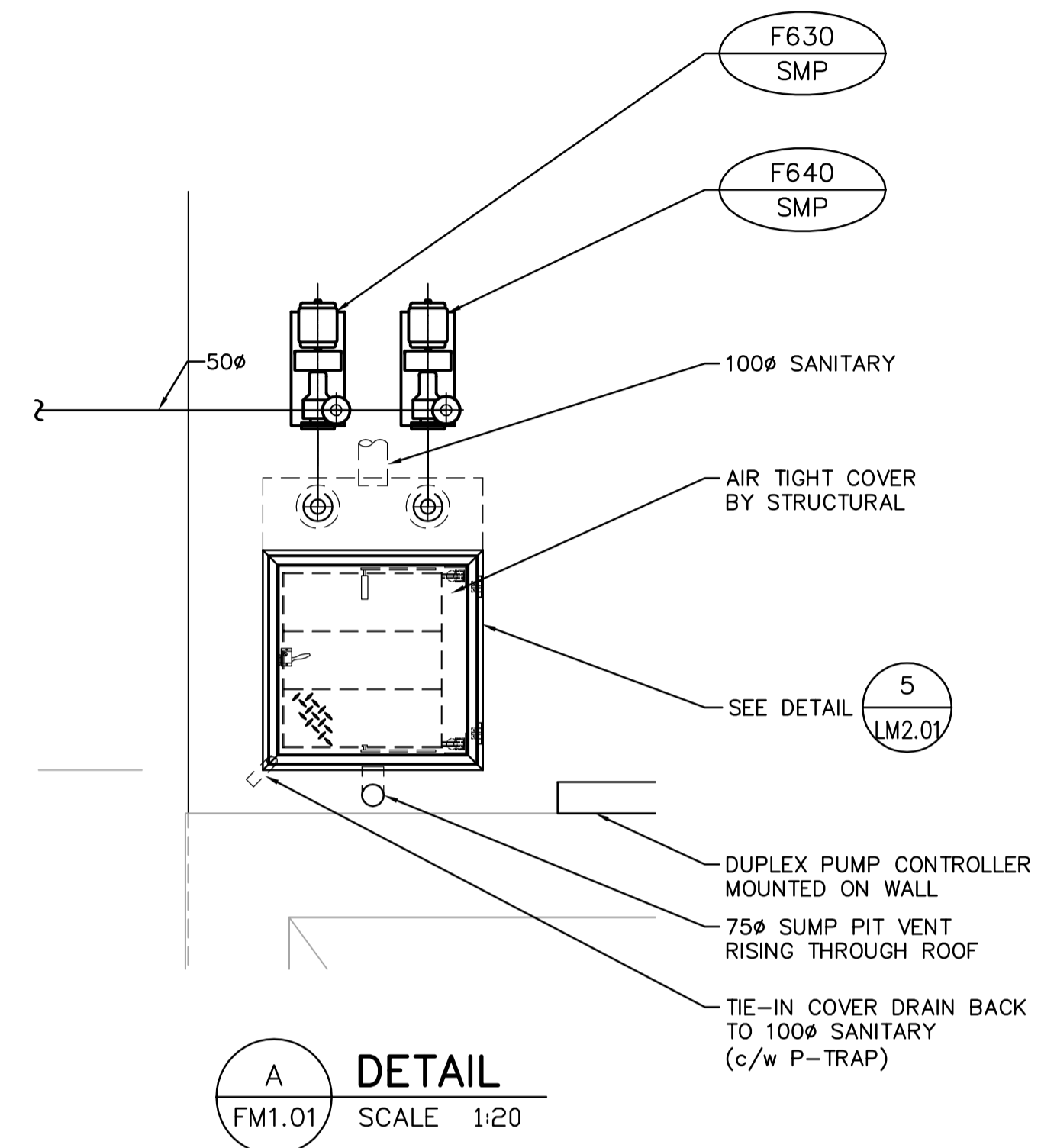
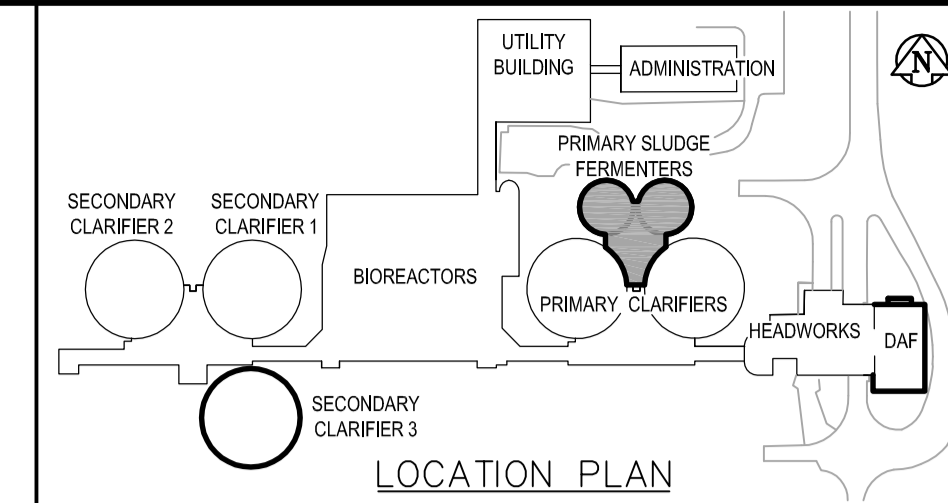


**FOUNDATION PLUMBING PLAN**  
SCALE: 1:100



**LOWER LEVEL PLUMBING PLAN**  
SCALE: 1:100



**SECTION - PIPE & DUCT PENETRATION LOCATION**  
SCALE 1:50

**DRAWING NOTES**

- 1 1012Lx762Wx2500 DEEP SUMP PIT.
- 2 LOCATED GAS COCK AND PRESSURE REDUCER NEAR F661-TO.
- 3 PROCESS MECHANICAL THERMAL OXIDIZER.
- 4 50ø SANITARY SERVING DIVISION II SERVICE SINK (SK-1).
- 5 SANITARY LINE EL. INV: 235.676.
- 6 SANITARY LINE EL. INV: 235.757.
- 7 SANITARY LINE EL. INV: 235.506.
- 8 SEE DRAWING PM1.01 FOR CONTINUATION.
- 9 RUN SERVICE AIR LINE DOWN ON MEZZANINE SUPPORT COLUMN. SEE DRAWING LM2.02 FOR SERVICE AIR CONNECTION DETAIL.
- 10 FIRE EXTINGUISHER LOCATED ON MEZZANINE LEVEL.

**GENERAL NOTES**

1. COORDINATE WITH OTHER TRADES SO AS TO PREVENT CONFLICTS.
2. ALL SANITARY PIPE 75ø AND SMALLER SHALL BE SLOPED AT 2%.
3. ALL SANITARY PIPE 100ø AND LARGER SHALL BE SLOPED AT 1%.



B.M. ELEV.		 A Tyco International Ltd. Company		ENGINEER'S SEAL	
				ORIGINAL SIGNED BY A. BURACHYNSKY	
DESIGNED BY	DC	CHECKED BY	PVL	2006/04/26	
DRAWN BY	DC	APPROVED BY	JEH		
HOR. SCALE: AS NOTED		RELEASED FOR CONSTRUCTION BY:		CONSULTANT DRAWING NO. FM1.01	
VERTICAL SCALE:		J. VEILLEUX			
NO. REVISIONS	DATE	BY	DATE	2005/12/19	2006/04/26

**THE CITY OF WINNIPEG**  
 WATER AND WASTE DEPARTMENT  
 ENGINEERING DIVISION

**WEWPCC**  
 BIOLOGICAL NUTRIENT REMOVAL UPGRADE  
 CONTRACT 3

MECHANICAL  
 AREA F - PRIMARY SLUDGE FERMENTERS  
 PLUMBING PLANS & SECTION

CITY FILE NUMBER  
 SHEET OF  
 CITY DRAWING NUMBER