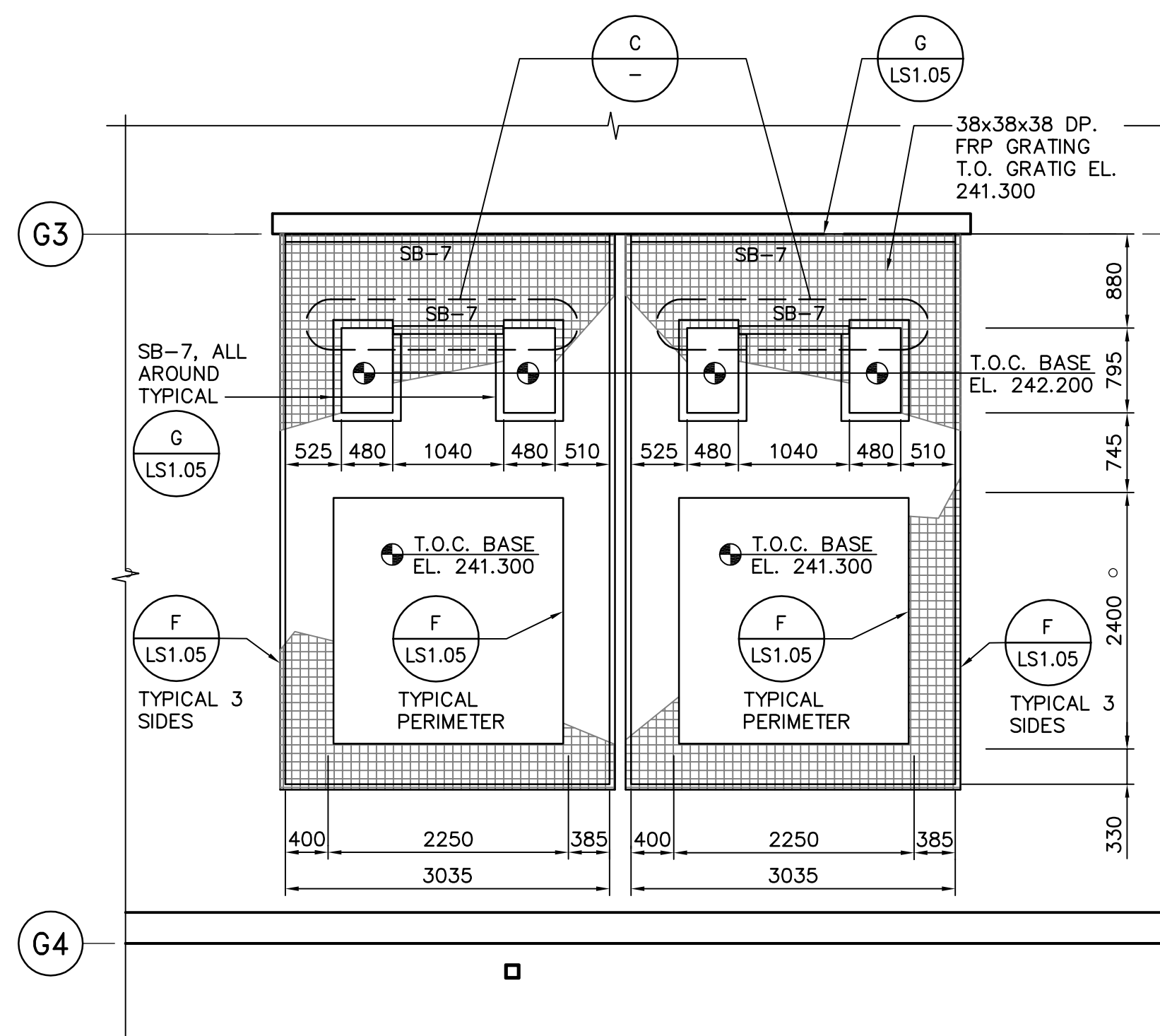


FERRIC CHLORIDE SECONDARY CONTAINMENT GRATING FRAMING PLAN

A
TS2.03 1:50

FERRIC CHLORIDE SECONDARY CONTAINMENT NOTES:

- DESIGN LOADS:
a) DEAD LOAD = 0.5 kPa
b) LIVE LOAD = 9.6 kPa
- TOP OF STEEL ELEVATION 241.262.
- FLANGES OF CHANNELS AND ANGLE TO FACE AWAY FROM TANK FACE AROUND CIRCUMFERENCE OF TANK.
- MAINTAIN 25mm CLEAR SPACE FROM TANK FACE TO STEEL MEMBERS.
- ALL STEEL MEMBERS AND CONNECTIONS TO BE COATED WITH FORMULA 30.
- CONCRETE CONTAINMENT PIT TO BE COATED WITH FORMULA 25.



POLYMER CONTAINMENT GRATING FRAMING PLAN

B
TS2.03 1:50

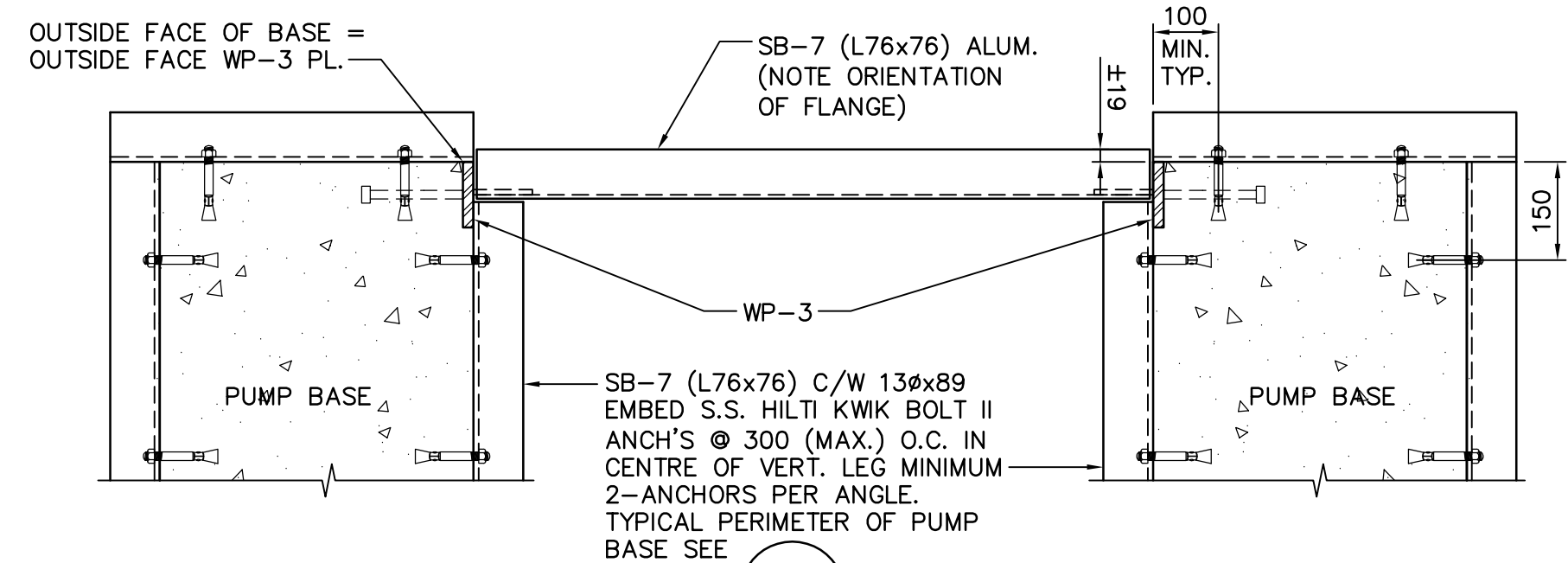
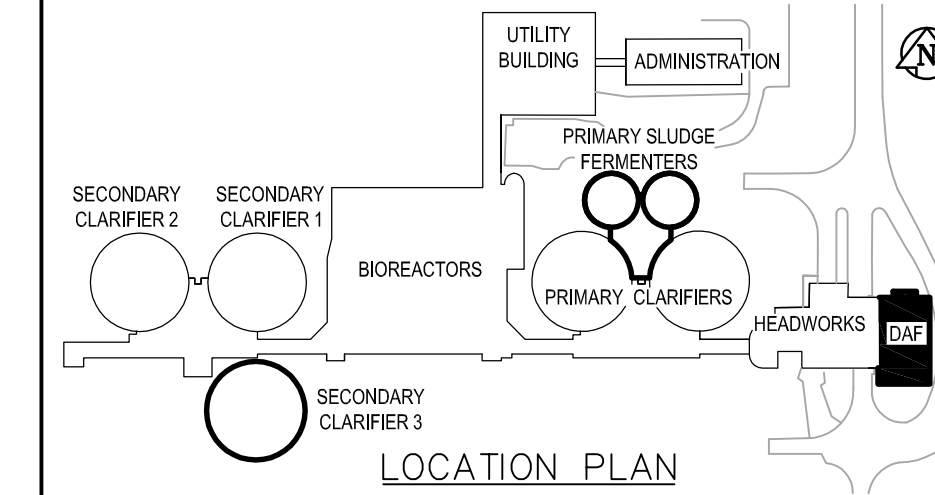
POLYMER CONTAINMENT NOTES:

- DESIGNED LOADS:
a.) DEAD LOAD = 0.25 kPa
b.) LIVE LOAD = 4.8 KPA
- CONCRETE CONTAINMENT PITS, PUMP PEDESTALS AND POLYMER BASE PADS TO BE COATED WITH FORMULA 25.

01

WELD PLATE SCHEDULE	
MARK	DETAILS
WP-1	<p>T.O. PLATE EL. 241.200 19x250x400 THICK PL. 6-13Øx155 NELSON STUDS</p>
WP-2	<p>T.O. PLATE EL. 241.225 16x250x250 THICK PL. 4-13Øx155 NELSON STUDS</p>
WP-3	<p>T.O. PLATE EL. 241.240 16x100x250 THICK PL. 2-13Øx155 NELSON STUDS, GALVANIZED</p>

STEEL BEAM SCHEDULE			
MARK	SIZE	FINISH	REMARKS
SB-1	W410x46	PAINTED, FORMULA 30	STEEL
SB-2	C150x12	PAINTED, FORMULA 30	STEEL
SB-3	L76x76x6.4	PAINTED, FORMULA 30	STEEL
SB-4	LS1x51x4.8	PAINTED, FORMULA 30	STEEL
SB-5	C180x15	PAINTED, FORMULA 30	STEEL
SB-6	C230x20	PAINTED, FORMULA 30	STEEL
SB-7	L76x76x7.9		ALUMINUM, SEE PLAN & DETAILS



C
LS1.05
DETAIL
1:10



B.M. ELEV.	DATE	BY

EarthTech A Tyco International Ltd. Company	
DESIGNED BY: ARA	CHECKED BY: LR
DRAWN BY: NDH	APPROVED BY: JEH
HOR. SCALE: AS NOTED	RELEASED FOR CONSTRUCTION BY: J. VEILLEUX
ISSUED FOR TENDER: 06/04/26	DATE: 2006/03/13
NO. REVISIONS	DATE BY

ENGINEER'S SEAL
ORIGINAL SIGNED BY
L.L. RIDING
2006/04/26
CONSULTANT DRAWING NO.
TS6.01

THE CITY OF WINNIPEG
WATER AND WASTE DEPARTMENT
ENGINEERING DIVISION

WEWPCC
BIOLOGICAL NUTRIENT REMOVAL UPGRADE
CONTRACT 3

STRUCTURAL
AREA T - DAF THICKENER BUILDING
GRATING PLANS, SECTIONS AND DETAILS

CITY FILE NUMBER
SHEET OF
CITY DRAWING NUMBER