

PART A

BID SUBMISSION

FORM A: BID
(See B7)

1. Project Title **SUPPLY & DELIVERY OF MOBILE CUTAWAY CHASSIS CREW VANS**

2. Bidder

Name of Bidder

Street

City Province Postal Code

(Mailing address if different)

Street or P.O. Box

City Province Postal Code

The Bidder is:

(Choose one)

a sole proprietor

a partnership

a corporation

carrying on business under the above name.

3. Contact Person The Bidder hereby authorizes the following contact person to represent the Bidder for purposes of the Bid.

Contact Person Title

Telephone Number Facsimile Number

4. Definitions All capitalized terms used in the Contract shall have the meanings ascribed to them in the General Conditions and D3 unless the context otherwise requires.

5. Offer The Bidder hereby offers to perform the Work in accordance with the Contract for the price(s), in Canadian funds, set out on Form B: Prices, appended hereto.

6. Commencement of the Work The Bidder agrees that no Work shall commence until he is in receipt of a Purchase Order authorizing the commencement of the Work.

7. Contract

The Bidder agrees that the Bid Opportunity in its entirety shall be deemed to be incorporated in and to form a part of this offer notwithstanding that not all parts thereof are necessarily attached to or accompany this Bid Submission.

8. Addenda

The Bidder certifies that the following addenda have been received and agrees that they shall be deemed to form a part of the Contract:

No.	_____	Dated	_____
	_____		_____
	_____		_____

9. Time

This offer shall be open for acceptance, binding and irrevocable for a period of sixty (60) Calendar Days following the Submission Deadline.

10. Signatures

In witness whereof the Bidder or the Bidder's authorized official or officials have signed this

_____ day of _____, 20_____ .

Signature of Bidder or
Bidder's Authorized Official or Officials

(Print here name and official capacity of individual whose signature appears above)

(Print here name and official capacity of individual whose signature appears above)

FORM B: PRICES
 (See B8)

SUPPLY & DELIVERY OF MOBILE CUTAWAY CHASSIS CREW VANS

UNIT PRICES

ITEM NO.	DESCRIPTION	SPEC. REF.	UNIT	APPROX. QUANTITY	UNIT PRICE	AMOUNT
1	Mobile Cutaway Chassis Crew Van	06010	Each	(5)	\$ _____	\$ _____
2	Parts manuals, CD preferred	06010	Each	(2) Sets	\$ _____	\$ _____
3	Technical service manuals, CD preferred	06010	Each	(2) Sets	\$ _____	\$ _____
TOTAL BID PRICE (GST and PST extra) (in figures) \$ _____ (in words) _____ _____						

 Name of Bidder

FORM N: DETAILED SPECIFICATIONS 06010

MOBILE CUTAWAY CHASSIS CREW VANS

(Water & Waste / Sewer Department)

1.0 INSTRUCTIONS FOR COMPLETION OF SPECIFICATIONS

- 1.1 The **MOBILE CUTAWAY CHASSIS CREW VANS** shall be a new 2006 or 2007 model year. The vehicles shall be furnished complete and ready for use by the Contractor. All parts not specifically mentioned but which are required to complete and place the vehicle into successful operation shall be furnished as though specifically mentioned in these specifications.
- 1.2 It will be the responsibility of the Bidder to inform the City of any errors or omissions in these specifications, for under this Contract the Contractor shall be held responsible for the satisfactory operational function of the vehicle.
- 1.3 All items in these specifications must be answered indicating compliance or non-compliance. **Bidders shall state "yes" for compliance or state deviation**, or give a reply where requested to do so. Deviations shall be clearly stated and fully detailed. Alternatives will be considered subject to evaluation.
- 1.4 Each bidder is required to fill in every blank. **Failure to do so may be used as a basis for rejection of bid.**
- 1.5 All applicable SAE standards form an integral part of these specifications and shall have precedence in any conflict concerning minimum acceptable standards.
- 1.6 The completed unit and all its components shall comply with all C.M.V.S.S. and Manitoba Highway Traffic Act regulations and requirements including, but not limited to, a Manitoba Government Inspection with Safety Sticker on the driver's side window.

2.0 SERVICE FACILITY

- 2.1 For the purpose of warranty repairs, the supplier shall have an authorized service facility located within 10 km of the boundaries of the City of Winnipeg. The facility, or a portion thereof, shall be dedicated to the service and maintenance of the type equipment being offered. Further to B9.1, Bidders shall provide a description of the service facility including, but not limited to, number of qualified service staff, years of service experience, and general service capabilities within three (3) Business Days upon request of the Contract Administrator.
- 2.2 If a suitable warranty facility is not available within 10 km of the boundaries of the City of Winnipeg, the Bidder may propose that the City of Winnipeg Repair Facility perform warranty work. Any Work performed by the City of Winnipeg Repair Facility shall be charged to the Contractor at the Facility's shop rate in effect at the time the work is performed (for example, shop rate for 2006: \$73.50/hour and \$ 103.50/hour for overtime and callout).

2.3 Location of the service facility located within 10 km of the boundaries of the City of Winnipeg.

The Bidder shall choose and fill in **one** of the Clauses listed below. --- **2.3.1) OR 2.3.2)**

- 2.3.1 Bidder's own facility location. State the location of the service facility below.

- 2.3.2 Bidder elects to have warranty work be performed by the City of Winnipeg Repair Facility.

3.0 CHASSIS SPECIFICATIONS-

3.1	GVWR	25,500 lbs.	_____
3.2	Front	8,000 lbs. minimum	_____
3.3	Rear	17,500 lbs. minimum	_____
3.4	GCW	Gross Combined Weight 25,500 lbs. minimum	_____

4.0 DIMENSIONS

4.1	Wheelbase	-As required for an approx. 14' to 14',6" finished interior cargo (Measured from bulkhead wall to back door). State WB-	_____
4.2	Cab to Axle	- As required for requested finished interior cargo length. (Measured from bulkhead wall to back door). State CA-	_____

5.0 ENGINE

5.1	<u>Type</u>	Diesel, inline 6-cylinder, Caterpillar C7	_____
5.2	<u>Horsepower</u>	230 hp gross minimum	_____
5.3	<u>Torque</u>	540 lb-ft minimum	_____
5.4	<u>Engine shut down</u>	Low oil pressure / high water temperature	_____
5.5	<u>Anti-idling</u>	Programmable anti-idling shut down	_____
5.6	<u>Air intake warmer</u>	Required	_____
5.7	<u>Fuel Shut-off</u>	Electric solenoid type	_____
5.8	<u>Air cleaner</u>	Dry type standard filter element	_____
5.9	<u>Air intake restriction</u>	Dash mounted restriction indicator	_____
5.10	<u>Oil drain plug</u>	Magnetic type	_____
5.11	<u>Oil filter</u>	Full flow, spin-on type	_____
5.12	<u>Fuel filter</u>	Spin-on type	_____
5.13	<u>Fuel/water separator</u>	Heated, drainable, mounted under hood, located to be protected from road spray. State location-	_____
5.14	<u>Fuel line primer pump</u>	Required	_____
5.15	<u>Block heater</u>	Immersion type, 1500 Watt minimum w/ covered recessed male plug, located under driver's side door	_____
5.16	<u>Coolant</u>	Extended Life coolant, antifreeze to -34°F	_____
5.17	<u>Coolant filter</u>	Required	_____
5.18	<u>Coolant hoses</u>	Silicone type or Gates Blue Stripe	_____
5.19	<u>Fan Drive</u>	Thermostatically controlled, automatic type	_____
5.20	<u>Air compressor</u>	Air compressor required with minimum 13 cfm	_____

6.0 ELECTRICAL SYSTEM

6.1	<u>Electrical connectors</u>	Plug-in, sealed type	_____
6.2	<u>Alternator</u>	Delco Remy 22-SI, 160 Amp	_____

6.3	<u>Starter</u>	Delco Remy 41-MT/OCP 450 Series with thermal protection	_____
6.4	<u>Circuit breakers</u>	Auto-reset, readily accessible	_____
6.5	<u>Batteries</u>	Three (3), 12-volt, group 31, 2100 CCA combined capacity minimum, must be deep cycle batteries.	_____
6.6	<u>Battery Box</u>	Under cab or frame mounted c/w enclosure State Location-	_____
6.7	<u>Remote boost terminal</u>	Remote battery boost terminal, protected from road spray, covered, state location-	_____
6.8	<u>Marker lights</u>	Cab marker lights	_____
6.9	<u>Accessory switches</u>	Three (3) dash mounted rocker switches required, all switches complete and wired for body installation, labeled and backlit.	_____
7.0	<u>EXHAUST SYSTEM</u>		
7.1	<u>Exhaust System</u>	See item 36.14 in <u>MISCELLANEOUS</u> section	_____
8.0	<u>TRANSMISSION</u>		
8.1	<u>Model</u>	Allison 2200 RDS transmission with PTO provision suitable for requested horsepower, torque and GVWR. Must have Parking Pawl.	_____
8.2	<u>Shift selector</u>	Column Shift with Park Pawl, hand lever operated transmission mounted park brake.	_____
8.3	<u>Cooling capacity</u>	Water to oil transmission cooler, as per manufacturer's recommendation for severe duty cycle.	_____
8.4	<u>Oil level dipstick</u>	Bayonet type with high and low level markings	_____
8.5	<u>Trans. drain plug</u>	Magnetic type	_____
9.0	<u>FRONT AXLE</u>		
9.1	<u>Front axle type</u>	8000 lbs. capacity min. State make and model-	_____
10.0	<u>REAR AXLE</u>		
10.1	<u>Rear axle type</u>	17,500 lbs. capacity min. State make and model-	_____
10.2	<u>Ratio</u>	For 110 km/hr maximum top speed, state ratio-	_____
10.3	<u>Differential</u>	Rear limited slip differential	_____
11.0	<u>HUB SEALS</u>		
11.1	<u>Type</u>	Oil lubricated front and rear	_____

12.0 FRONT SUSPENSION

12.1 Front Suspension Type Taper leaf front suspension, 8,000 lbs. capacity minimum. _____

13.0 REAR SUSPENSION

13.1 Rear Suspension Type Air ride suspension, 17,500 lbs. capacity minimum, state make and model- _____

13.2 Suspension Control Manual dump valve for air suspension c/w dash mounted switch, indicator light, gauge & buzzer. _____

14.0 WHEELS

14.1 Front 19.5 x 6.75 steel disk, hub piloted. Must meet GVWR _____

14.2 Rear 19.5 x 6.75 steel disk, hub piloted. Must meet GVWR _____

15.0 TIRES FRONT

15.1 Front Tires Must be steer tires, suitable for Manitoba weather conditions, (mud, snow, rain etc.) state tire make and model- _____

15.2 Size 19.5 Low Profile, must meet requested GVWR _____

16.0 TIRES REAR

16.1 Rear Tires Must be drive tires, suitable for Manitoba weather conditions, (mud, snow, rain etc.) state tire make and model- _____

16.2 Size 19.5 Low Profile, must meet requested GVWR _____

17.0 FRAME

17.1 Type Single rail, suitable for requested GVWR, outside frame clear of components for body installation. _____

17.2 Application Suitable for cutaway van body application _____

17.3 Chassis fasteners Grade-8 threaded hex headed frame fasteners _____

17.4 After frame As required for cutaway van body application _____

18.0 STEERING

18.1 Steering Type Power steering required _____

19.0 BRAKES

19.1 Type Hydraulic, ABS, front & rear brakes _____

19.2 Parking brake Transmission mounted parking brakes _____

- 19.3 Moisture ejector Bendix DV-2, heated, required in wet tank. _____
- 19.4 Drain valves Manual, chain or cable operated, required on each air tank _____
- 19.5 Air dryer Heated Air Dryer required _____

20.0 FUEL TANKS

- 20.1 Type Maximum fuel tank capacity available for requested cutaway van body application. Size to be determined during pre-production meeting. _____
- 20.2 Tank straps Steel straps with minimum 1/16 in. rubber or neoprene isolators to prevent galvanic corrosion. _____
- 20.3 Fuel separator Heated, drainable type _____

21.0 CAB

- 21.1 Type **Cutaway style cab only**, to accommodate cutaway van body application. Cab must have corrosion inhibitor. _____
- 21.2 Construction Aluminium or galvanized steel construction _____
- 21.3 Front axle to (BOC) State front axle to back of cab measurement- _____
- 21.4 Cab mounts Hystec Hydraulic cab mounts _____
- 21.5 Front grille Stationary type _____
- 21.6 Cab interior / trim Maximum Insulation including cloth or vinyl headliner on roof, door panels and rear interior of cab. _____
- 21.7 Cab silencer package Required for minimal decibel level _____
- 21.8 Hood/Firewall/Engine Insulated hood liner, engine cover and firewall _____
- 21.9 Floor covering Moulded vinyl floor covering with under-padding _____
- 21.10 Floor mats Three (3), rubber floor mats _____
- 21.11 Driver's seat One (1) High back, air suspension w/foldable armrests, heavy-duty cloth upholstery, state make model of seat- _____
- 21.12 Passenger seats Two (2) High back, air suspension seats w/foldable armrests, heavy-duty cloth upholstery. Third (3rd) passenger seat located behind front passenger seat, exact location to be determined prior to production. _____
- 21.13 Sun visors Dual flip-up type _____
- 21.14 Steering wheel Tilt steering _____
- 21.15 12-Volt power outlet Two (2) Required on dash _____
- 21.16 Radio Factory installed AM/FM/CD _____
- 21.17 Starter switch Key operated c/w three (3) sets of keys _____
- 21.18 Interior light Dome light with driver and passenger door switches _____
- 21.19 Heater / Defroster High output, capable of keeping all windows _____

		clear at an outside temperature of -35F (-37°C)	_____
21.20	<u>Air conditioning</u>	High out put air conditioning required	_____
21.21	<u>Foot Pedals</u>	Hanging type brake and accelerator pedals	_____
21.22	<u>Horn</u>	Dual electric	_____
21.23	<u>Exterior mirrors</u>	Dual black moulded composite aerodynamic mirrors, heated, lighted, 2-way motorized adjustment, exterior mirrors to include convex mirrors, suitable for 102 in. equipment width.	_____
21.24	<u>Down view mirror</u>	Required over passenger door, 5" x 4" approx.	_____
21.25	<u>Windows & windshield</u>	Factory tinted	_____
21.26	<u>Windows and Locks</u>	Power windows and locks	_____
21.27	<u>Windshield wipers</u>	Electric, intermittent	_____
21.28	<u>Wiper blades</u>	OEM Winter Wiper Blades	_____
21.29	<u>Windshield washer</u>	Electric, required with spray nozzles on wiper blades, with Webasto Hot Shot Washer System P/N- MH34SA- Webasto Hot Shot Wiper System (Installed as per Manufacture's Guidelines)	_____
21.30	<u>Grab handles</u>	Dual exterior grab handles	_____
21.31	<u>Entrance steps</u>	Dual each side, open grate / grip type with boot brush mounted on driver and passenger sides	_____
21.32	<u>Winter-front</u>	Heavy-duty vinyl w/twist lock or snap type fasteners	_____

22.0 INSTRUMENTATION

22.1	<u>Oil pressure</u>	Gauge	_____
22.2	<u>Coolant temperature</u>	Gauge	_____
22.3	<u>Transmission oil temp.</u>	Gauge	_____
22.4	<u>LOP/HWT</u>	Warning light and buzzer	_____
22.5	<u>Voltmeter</u>	Gauge	_____
22.6	<u>Air reservoir pressure</u>	Gauge with LAP warning light and buzzer	_____
22.7	<u>Engine hour meter</u>	Required, non reset able type	_____

23.0 TOW HOOKS

23.1	<u>Location</u>	Readily accessible, front frame mounted	_____
------	-----------------	---	-------

24.0 FRONT BUMPER

24.1	<u>Type</u>	Front bumper full width	_____
------	-------------	-------------------------	-------

25.0 COLOUR

25.1	<u>Exterior</u>	White	_____
25.2	<u>Interior</u>	Blue or grey	_____
25.3	<u>Frame & suspension</u>	Primed and finished with black Imron 5000 paint	_____
25.4	<u>Wheels</u>	Powder coated white	_____

26.0 CUTAWAY VAN BODY DIMENSIONS AND WEIGHTS

26.1 Interior Cargo length- Bulk head wall to back door, 14' to 14,6". _____

26.2 Overall Body Length- To accommodate a 14' to 14,6" finished interior cargo length with a cutaway style chassis with 3rd row seating as per specified herein. State overall body length- _____

26.3 Overall height - 124 in. maximum, state- _____

26.4 Body width exterior - 96 in. maximum, state- _____

26.5 Interior height – 78-80 inches finished height, state- _____

26.6 Floor height – Approx. 36 inches from ground level. _____

26.7 Unit weight including chassis – state- _____

27.0 INTERFACES

27.1 All interfaces between aluminium and steel are to be separated by a minimum of 1/16 in. thick rubber or neoprene sheet and are to be bolted through with stainless steel bolts and non-conductive bushings. _____

28.0 WALL CONSTRUCTION

28.1 Walls -smooth aluminium, construction method to be either snap-lock panels - min. 0.125 in. thick on 12 in. centres; or frame and skin construction - 1½ in. "Z" type extrusions on 12 in. centres with min. 0.125 in. panels fastened with aluminium rivets. State construction method. _____

28.2 Insulation -Two (2) inches minimum spray foam, (R7 rating per inch.) _____

28.3 Complete interior lining -Interior walls must be lined with minimum 3/8" plywood and lined over with white glass board (Kemlite). _____

29.0 ROOF

29.1 Construction - Smooth aluminium stressed-skin, walk-on style roof minimum 10 gauge aluminium. _____

29.2 Roof bows - Hat type on 12 in. centres. _____

29.3 Insulation - Two (2) inches, state type- _____

29.4 Roof lining - ¼ in. plywood covered with glass board (Kemlite) panel. _____

30.0 STORAGE KICK

Storage kick- Van roof to be cut-out as required and equipped with a sloped 'kick-over', aluminium construction with open storage area. walk-through to be full height, approx. 30" wide. Upper storage area shall be c/w a 2 inch lip. _____

31.0 FLOOR

- 31.1 Cross sills- Full width 2 in. x 2 in. x 0.125 in. hollow structural steel tubing or equivalent on 16 in. centres. State material- _____
- 31.2 Long sills- Structural C channels or equivalent. State material- _____
- 31.3 Floor material- Extruded aluminium non-skid safety floor material- _____
- 31.4 Insulation- 3" in. of spray foam urethane insulation on underside of floor _____

32.0 REAR DOORS

- 32.1 Rear doors- Two (2) hinged type, approx. 72" H X 30" W right hand door and 10" W left hand door, complete with safety glass, top and bottom on right hand door. Doors to open maximum distance, manufacture shall choose adequate hinge system to achieve maxim fully opened positions. _____
- 32.2 Safety glass- Two (2) required on right hand door, min. 20" H X 14" W each. _____
- 32.3 Hinges- Three (3) heavy-duty stainless steel hinges per door, state type- _____
- 32.4 Door Latch System- Manufacture's heavy duty standard slam action type. Rod-actuated with locking exterior handle. _____
- 32.5 Door stays- Designed to hold rear doors in fully open position, "Grabber" U-style (Cast Products Inc.), no substitutes. _____

33.0 INTERIOR BULKHEAD

- 33.1 Bulkhead- Full width, 12 gauge aluminium with sufficient soundproofing, located directly behind third passenger seat. _____
- 33.2 Bulkhead shall be designed to permit full rearward seat travel with the seat in a comfortable reclined position. A 1" (inch) space shall be provided between the bulkhead and the seat to prevent rubbing. _____
- 33.3 Bulkhead door - centre, swinging door with minimum two (2), 18 in. x 18 in. Lexan window located in upper and lower door. Lower window shall be located to provide driver rear visibility when bulkhead door is closed. Door shall be designed in a secure manner to prevent rattling and have a heavy duty locking system. _____

34.0 INTERIOR LAYOUT & SHELVING

PASSENGER SIDE (SEE CURBSIDE ELEVATION DRAWING)

- 34.1 Clothing storage compartment- 72" H x 30" W x 24" D approx., aluminium construction mounted on 4" riser, with double over lapping doors and latch able lock located on passenger side behind bulkhead wall. _____
- 34.1.1 Shelf- full width and full depth, located 18 in. from top of locker with 1 in. front lip. _____
- 34.1.2 Clothes hooks- five (5) hooks, one right and left side, three on rear side. _____

- 34.2 Shelving Material- 10 gauge aluminium minimum state- _____
- 34.3 Work bench- 72" L x 24" D with approx. 34 in. working height.
Bench top to be laminated wood, approx. 2 in. thick. _____
- 34.3.1 Storage cabinet # 1- 24" W x 24" D x 30" H c/w two (2) height adjustable shelves. Cabinet shall have swinging, latch able doors. _____
- 34.3.2 Storage cabinet # 2 - 24" W x 24" D x 30" H, c/w two (2) height adjustable shelves. Cabinet shall have swinging latch able doors. _____
- 34.3.3 Drawers- Three (3) pull-out, 24" W x 24" D x 30" H, latch able, drawers to have heavy-duty sliders to maintain min. 300 lbs capacity. _____
- 34.3.4 Storage cabinets and drawers to be mounted on a 4 in. riser. _____
- 34.3.5 Vice- 5 in. Record with swivel mounted to top, right hand side of work bench. _____
- 34.3.6 Pigeon Hole Bins- (2), approximately 48" L, located above work bench, mounted to passenger side interior wall to store various bolts, gaskets, and miscellaneous parts. Bin to be "Weather Guard" brand. Exact measurements and model to be determined during pre-production meet. _____
- 34.3.7 Upper Workbench shelf- 60" L X 12" wide, with a 2" wrap around lip, mounted 1' below ceiling to accommodate miscellaneous tools and equipment, min. 100 lbs Capacity. _____
- 34.3.8 Work station shelf- Approximate 60" L X 25" H X 24" with a 2" front lip to accommodate min. 300 lbs. capacity. Exact measurements to be determined during pre-production meet. _____
- DRIVER SIDE (SEE INTERIOR ROADSIDE ELEVATION DRAWING)**
- 35.0 Computer Work station- 48" working height, approx. 42" W X 24" D, bottom 24" left as open area, with three (3) 8"H X 30" W X 24" D drawers with heavy duty sliders. Wall mounted LED or fluorescent work light with switch on fixture. Location behind drivers seat directly in front of bulkhead wall. _____
- 35.1 Literature holder- Weather Guard model 8870, located near computer station area. _____
- 35.2 Storage compartment / Bench- 26" H x Approx. 8' L x 18" D approx., aluminium construction, with (3) cabinets. _____
- 35.3 Cabinet (1)- Minimum 41"W- open area cabinet with no shelving. _____
- 35.4 Cabinet (2)- Minimum 41"W Open area cabinet with one adjustable shelf. _____
- 35.5 Cabinet (3)- This cabinet is to accommodate a Webasto Air Top 3500 _____

12-volt diesel fired heater, with a hinged "pull up door" for heater access and servicing. Measurements to be determined during pre-production meet.

35.5.1 Rear heater – Webasto Air Top 3500 12-volt diesel fired heater located at or near floor level. Heater duct(s) shall be c/w round, swivel type air deflector(s). Air intake to be constructed for sufficient air flow as recommended by heater manufacture. Intake air shall be located near upper outside wall in order to keep contaminants and dirt out of the air intake.

35.5.2 Rear heater cover- Aluminium construction covering top and sides, removable using clamp fasteners or pull-down latches. Air intake end to be constructed for sufficient air flow as recommended by heater manufacture. Heater cover shall include a 2 inch top lip.

35.5.3 Rear Heater Control- Shall be ergonomically located within driver's reach and easily serviceable. Exact mounting location to be determined at time of installation.

35.5.4 Floor Mounting Ducting Locations- Mounting and ducting locations to be determined at pre-production production meeting.

35.6 Storage cabinet – Approx. 48"W X 80" H X 24"D, with one reinforced fixed shelf to accommodate 200 lbs. operator tool box. Shelf to be 34" working height. Upper area to have adjustable full width shelves. storage cabinet to have to over lapping doors.

35.6.1 Shelving Unit- Approx. 32"W X 80"H X 24". One (1) fixed shelf and 32"H with 1" lip, and (2) adjustable shelves with a 1"lip.

35.6.2 Boot holder - aluminium, mounting location to be pre-determined prior to production.

36.0 MISCELLANEOUS

36.1 Rear bumper - heavy-duty full width, bolted to chassis frame, approx. 9 in. deep with grip strut step surface and recess for pintle hitch mount. Bumper to have boot brush mounted clear of operators exit and entry.

36.2 Bumper- shall be bolted to chassis frame and to van body, structurally reinforced and fastened with Grade 8 bolts. Shall provide a low step height from ground level. Exact height to be discussed at a pre-production meeting.

36.3 Mud flaps - No-name black rubber type with steel bar anti-sail brackets, installed behind rear tires.

36.4 Combination hitch- Mounted on receiver Buyers Products BH8-2000, adjustable mounting height, secured to insert flange with Grade-8 fasteners

36.5 Receiver Hitch mounts- to be recessed such as to provide minimum intrusion into access area. Incorporate into bumper design

36.6 Trailer Hitch reinforcement - "A" frame, bolted to chassis frame web.

- 36.7 Lunnette eyes for trailer safety chains- mounted under side of bumper, two (2) required, one on each side of hitch, each rated at full capacity of hitch, Buyers Products B56727 or equal.

- 36.8 Directional Signal- One (1) ArrowStik Code 3 Inc. P/N AS-847HS C/w 8 segment ArrowStik, 47 inch length, 1156 bulbs, basic controller mounting Location to be rear facing above roofline at rear of van c/w branch guard. Exact location of in-cab controller to be determined at time of installation.

- 36.9 Valve key tubes- two (2) only 13 ft. x 4½ in. diameter PVC tubes, and two (2) only 72 in. x 4½ in. diameter PVC tubes per side. Valve key tubes to be enclosed at a 5° angle in a false wall on interior of van, complete with rear access door. Note: All tubes to be in line vertically and spaced accordingly.

- 36.10 Tubes- shall provide for adequate drainage to exterior of van for cleaning purposes

- 36.11 Ladder Shute Door- Door to accommodate a 14' ladder, to be located curb side at rear. Shute to have interior water drainage for cleaning, location of drainage to be determined during pre-production meet. Dimensions approximately 8" W X 25"H.

- 36.12 Rear access door handles- Tri-mark, stainless steel, two stage, paddle type handles.

- 36.13 Roof vent- Fan-Tastic, model 4000 power vent with 3 speed reversible fan, installed in roof of cargo area, switch panel actuated.

- 36.14 Vertical rear exhaust w/muffler guard - located on left side corner (driver side) at rear, oval type design. Exhaust tip shall be complete with 90° bend and 45° cut-off. Exhaust shall be located to provide minimal obstruction for rear access doors and lighting.

- 36.15 Exhaust modifications on underside of vehicle shall be routed over rear axle.

- 36.16 Compressor- V-mac or equivalent under compressor to operate air tools minimum 75 CFM. State make and model of compressor-

- 36.17 Hose Exit port- Hose exit port to be located right rear wall at floor level. Port must be of latch style.

- 36.18 Exterior Storage- two (2) required, one (1) per side, steel construction under-body, frame mounted, approx. 6'L X 17" H X 20" D each. Driver side storage box to have a 24" divided slit partition and will require venting to outside in order to store fuel containers and oil containers. Compartment dimensions shall be designed to provide sufficient ground Clearance. Complete with compartment floor liner- Heavy Duty rubber matting. State Dimensions-

- 36.19 2-way radio circuit-Independent 20 Amp circuit, ignition powered, wired under dash loose, labelled.

- 36.20 Flare kit - three (3) triangular reflectors, CVSA approved.

- 36.21 Fire Extinguisher- 10 pound Fire Extinguisher mounted secured and accessible to operators.

36.22 Third Seat Exterior Window- 20" X 20" exterior window beside 3rd passenger seat. Window to be vented type. _____

36.23 Wall Hooks- Twelve (12) heavy-duty wall hooks, locations to be determined during pre-production meet. _____

36.24 Bracket- Heavy duty, half moon style bracket with bumper to accommodate approximately 60 lbs roll of ¾" copper tubing. Locations to be determined during pre-production meet. _____

36.25 Interior Fans- Three (3) Interior Roof Fans required. Exact location to be determined upon pre-production meet. _____

37.0 INTERIOR LIGHTING LAYOUT

37.1 Interior lights- Four (4) Groté 61511, actuated through switch panel _____

37.2 Light Mounting Locations- Five (5) mounted above centre isle, evenly spaced, one (1) located on driver's side ceiling near workbench. All interior lights shall actuate through one (1) switch and door switches. **GENERALLY SHOWN ON INTERIOR FLOOR PLAN DRAWING.** _____

37.3 Interior Cab Dome Lights- Two (2) OEM style overhead lights, one (1) roof mounted driver side, one (1) roof mounted passenger side. Lights to be actuated through OEM dash mounted switch and door switches. _____

37.4 Map Light- Passenger side mounted, Hella 87141. Exact location to be determined at time of installation. _____

38.0 ELECTRICAL & LIGHTING

38.1 All vehicle lighting shall conform to C.M.V.S.S. and Manitoba Highway Traffic Act requirements. _____

38.2 All body supplier installed wiring shall be numbered, colour coded, loomed, properly secured and protected from damage. _____

38.3 All electrical connectors shall be crimped and soldered, then sealed using heat shrink tubing. _____

38.4 All joining of wires shall be soldered and sealed using heat shrink tubing (crimp on electrical connectors for joining wires are not acceptable). _____

38.5 All holes required for routing wiring shall be drilled (not punched), grommetted and sealed as required. _____

38.6 Wiring access panel- Wiring for interior lights, switch panel wiring, outlets, etc., shall be accessible from an access panel running along the inside corner of the ceiling. _____

39.0 SUPPLIER INSTALLED LIGHTING SHALL BE LED TRUCK LITE (EXCEPT WHERE OTHERWISE NOTED) AND SHALL INCLUDE THE FOLLOWING: _____

- 39.1 Combination Stop, turn and tail lights – P/N 44302R, one (1) per side with P/N 40700 mounting grommets, flush or recessed mounted. _____
- 39.2 High mounted stop, turn and tail lamps - P/N 44302R, one (1) per side with P/N 40700 mounting grommets, flush or recessed mounted. _____
- 39.3 Turn signal flash rate- 70-90 flashes per minute. _____
- 39.4 Back-up lights- P/N 44206C, one (1) per side with 40700 mounting grommets. _____
- 39.5 Three Light Cluster- Three (3) only P/N 10250R with P/N 10700 mounting grommets. _____
- 39.6 Clearance Lights- P/N 10250r and 10250Y with P/N 10700 mounting grommets. _____
- 39.7 License plate lamp – P/N 15040, complete with license plate bracket _____
- 39.8 Lighting harnesses – Truck-Lite 50 Series Harness System, properly routed and secured. _____
- 39.9 Junction box – P/N 50400, complete with necessary compression fittings, required for all vehicle lighting harness connections, located inside rear of truck frame. _____
- 39.10 All plug-in connectors shall be coated with Truck-Lite NYK compound prior to assembly. _____
- 39.11 Back-up alarm – STAR 62-097, 97 dB(A) rating, installed at rear of of body, located to be protected from damage. _____
- 39.12 Rear Work lights- two (2) utility lamps, Truck-Lite 80394, mounted above Rear doors. Lights shall be wired through neutral safety switch, switch Panel actuated. _____
- 39.13 Valve key storage compartment lights- located top inside of doors, one (1) per compartment, Truck-Lite 40244 with rubber grommets. actuated through “rear work lights” switch on switch panel. _____
- 39.14 Warning light system - six (6) Truck-Lite 92690Y lights, amber lens, switch Panel actuated. _____
- 39.15 Warning Light mounting locations:
- i) Front - two (2) top corner mounted. _____
 - ii) Sides - one (1) per side, top-centre mounted. _____
 - iii) Rear - two (2) top corner mounted. _____
- 39.16 Lights shall be sequentially wired in alternating flash pattern _____
- 39.17 Side mounted scene lights- Four (4) Whelen 90E000ZR c/w trim ring, installed near roofline, one (1) per side, mounted approx. 4 inches to the rear of the warning lights, switch panel actuated. _____

39.18 Inverter-Xantrex RS 2000, powered from auxiliary battery, switch panel actuated, mounted above driver in storage kick area.

39.19 Electrical Outlets- Five (5) 120 Volt duplex outlets required, GFI, CSA approved. Two (2) located over workbench, one (1) located at rear drivers side, one in computer stations to operate computer, one (1) to be located van body exterior, locations to be determined at time of production.

39.20 Trailer connector - 6-pole, Dominion Auto 76-4009, wired as per Detailed Specifications 06010 installed in hitch plate.

39.21 Continuous duty solenoid - Cole Hersee part # 24059 or 24016, controlled by "ACC" & "RUN" on ignition switch.

39.22 Switch panel - wired through ignition. Required for fast idle, interior fans, roof vent, rear work-lights, warning lights, side mounted scene lights, interior lights, inverter, and two (2) additional blank space. switch panel shall be equipped with indicator lights and back lighting, Wired Rite Systems Inc.or equal. State make and model being bid.

39.22.1 Mounting location - directly above windshield, driver's side.

40.0 INSTALLATION

40.1 Upon request by the Contract Administrator, Bidders shall supply a final diagram and description showing the body manufacturers recommended body to chassis mount. Diagrams shall be supplied within twenty (20) Calendar days upon request.

40.2 Mounting brackets shall be bolted to chassis frame using Grade-8 fasteners.

40.3 Mounting of the body shall be in accordance with the chassis manufacture's guidelines for body mounting, including, but not limited to, guidelines for tire and suspension clearance and fuel filler installation.

40.4 Tire Clearance- Bumper pad clearance plus 3" minimum

40.5 Operator Entry- The van body shall be mounted as low as practicable and shall incorporate wheel wells.

40.6 All holes for latches, outlets, etc. shall be neatly cut and de-burred

40.7 All edges and corners shall be rounded to prevent accidental injury

40.8 Any holes required in the chassis frame web must be drilled and reamed to fit bolts, no exceptions.

40.9 Drilling on chassis frame flanges are not permitted.

40.10 Welding on the chassis frame is not permitted.

41.0 FINISH

41.1 The complete van body shall be properly cleaned, primed and finished

as follows:

- i) Exterior - entire van body (excluding roof) shall be painted white, to match chassis cab with two (2) coats of polyurethane Enamel, Dupont Imron or Akzo Sikkens. _____
- ii) Interior - brackets, mounts, and any other unfinished Cabinets etc., shall be painted white with two coats of White enamel. _____
- iii) Wheels and bumpers - white, grey or argent. _____
- iv) Rear Bumper-painted with two (3) coats of grey argent Enamel. _____

42.0 MANUALS

42.1 The Contractor shall supply the following manuals (in English) upon delivery Of the vehicles: _____

42.2 Operator's manual – one (1) per vehicle

42.3 Parts manuals, CD preferred - two (2) sets. _____

42.4 Technical service manuals, CD preferred- two (2) sets. _____

42.5 **Data Collections Sheets- Data collections sheets to be completely fill out. See clause D.6 (PMDCS)** _____

43.0 TRAINING

The Contractor shall be required to provide training (at the Contractor's expense) for the City of Winnipeg maintenance and operating personnel.

The training shall be divided into two separate sessions, one for maintenance personnel and one for operating personnel. The training shall be conducted in separate or combined sessions for each group of personnel.

The duration of the sessions shall be as long as required for adequate familiarization and orientation of the equipment to the satisfaction of the Contract Administrator.

The training shall be conducted within **two (2) calendar weeks** from the date of delivery and shall be coordinated through the Contract Administrator.

The training shall be conducted in Winnipeg at a time and location designated by the Contract Administrator.

Pricing should be based on two (2) business days for maintenance personnel and two (2) business days for operating personnel.

Note: The first payment of the contract on the equipment will not be issued until successful completion of training has been conducted to the satisfaction of the Contract Administrator. _____

43.1. Training Aides

Training aids to be included _____

43.1.2 On the type of equipment being offered, state if VHS videotape or CD Rom training aides are available.

43.1.3 State if other training aides are available and state type

44.0 WARRANTY

44.1 Basic Vehicle- Two (2) years, unlimited km

44.2 Batteries- One (1) year, unlimited km

44.3 Chassis Cab Structural- Two (2) years, unlimited km

44.4 Drive Line- Two (2) years, unlimited km

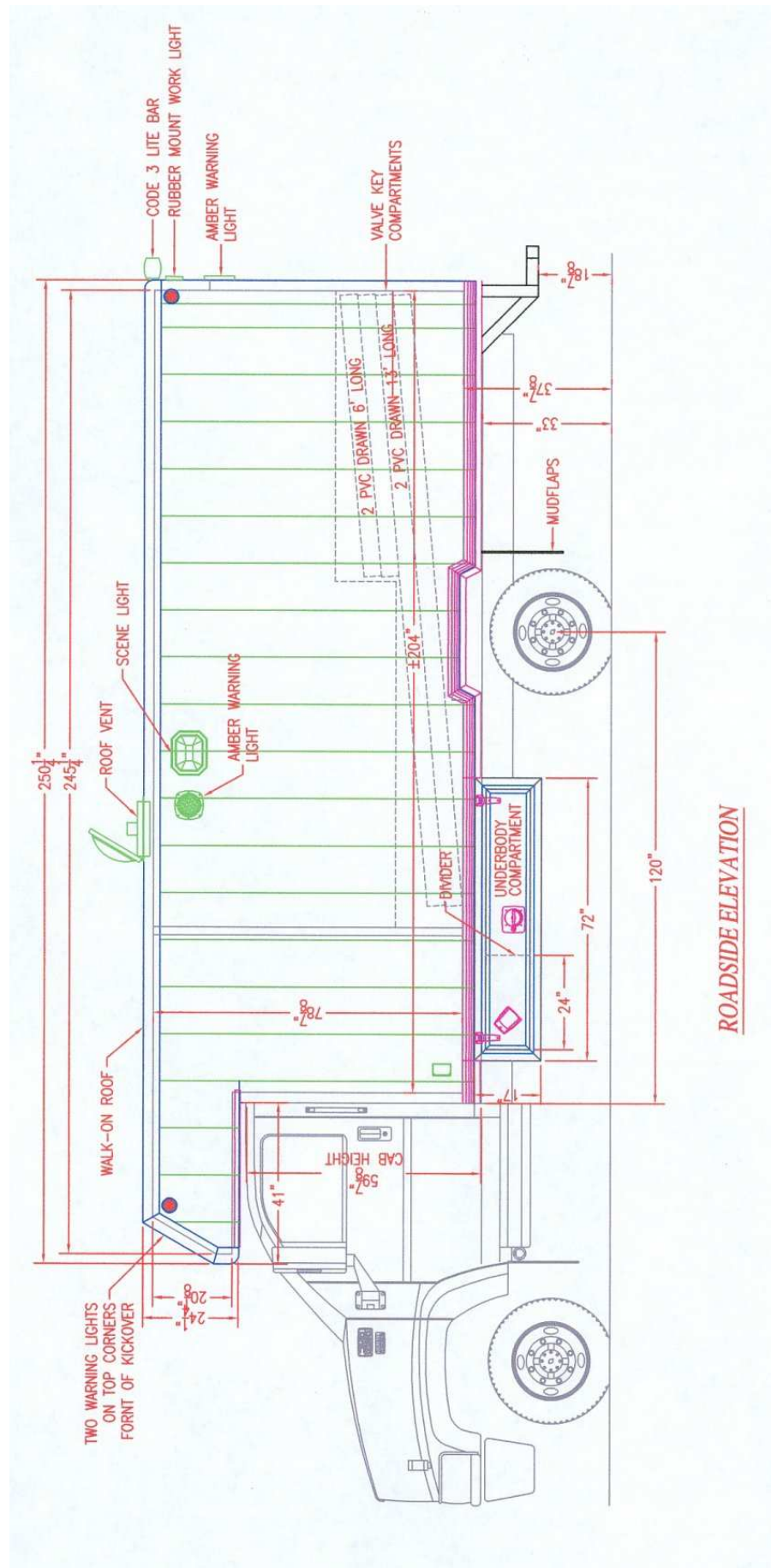
44.5 Frame & Cross members- Five (5) years, unlimited km

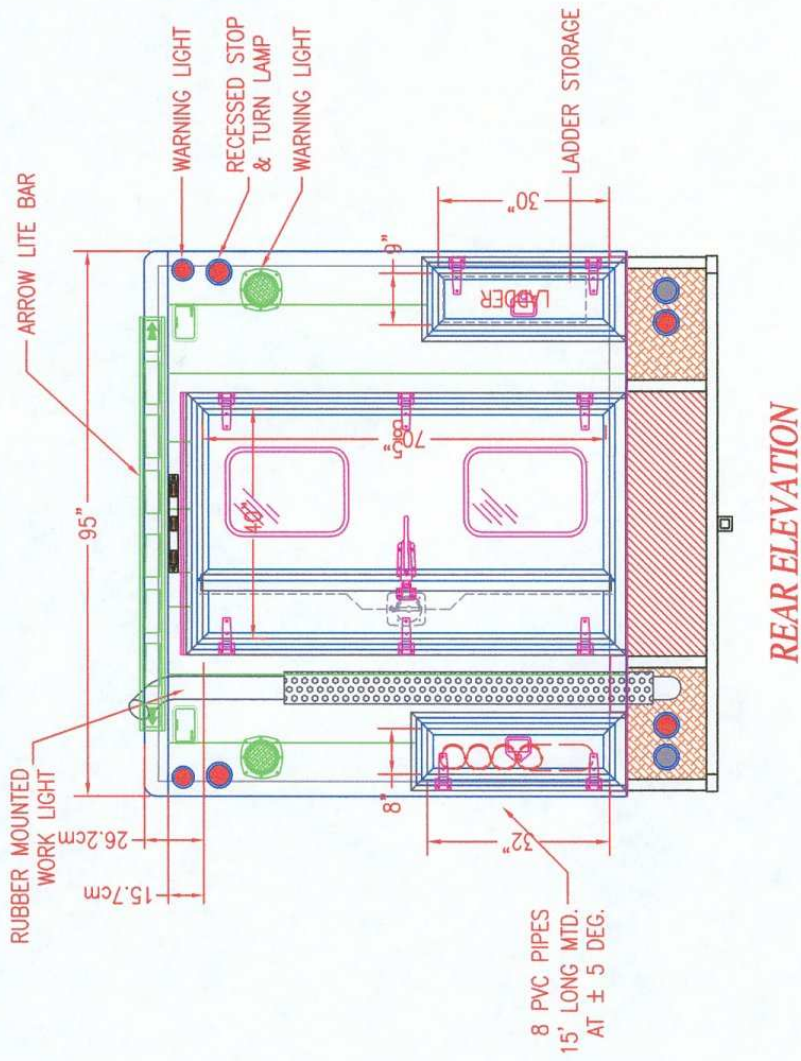
44.6 Engine- Three (3) years or 240,000 km or 3600 hours

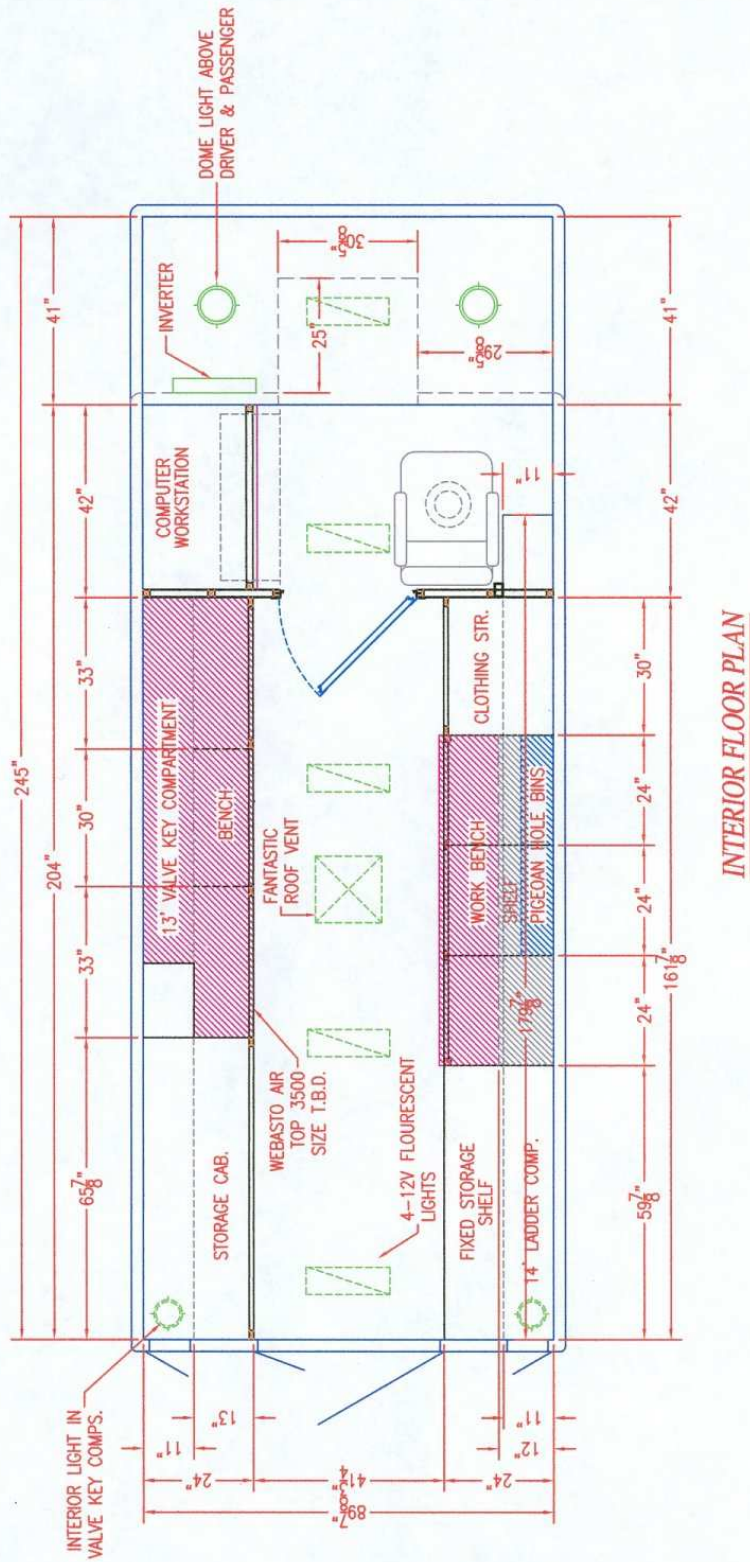
44.7 Transmission- Two (2) years, unlimited km

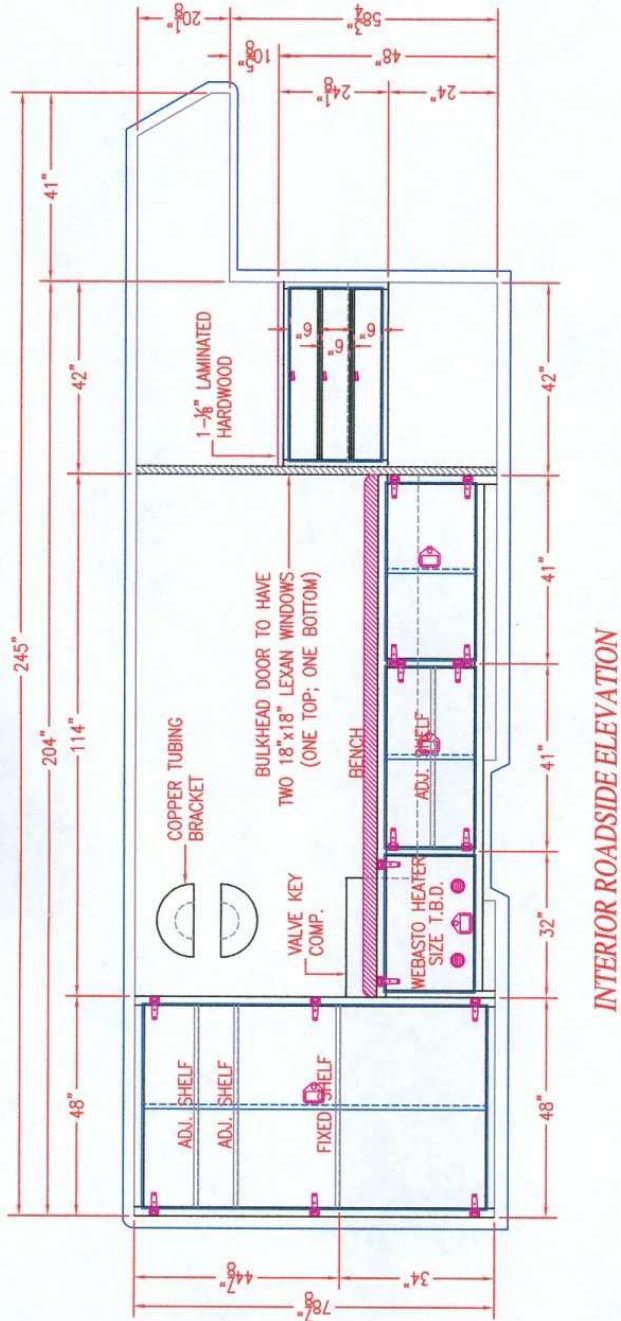
44.8 Front & Rear axles- Two (2) years unlimited km

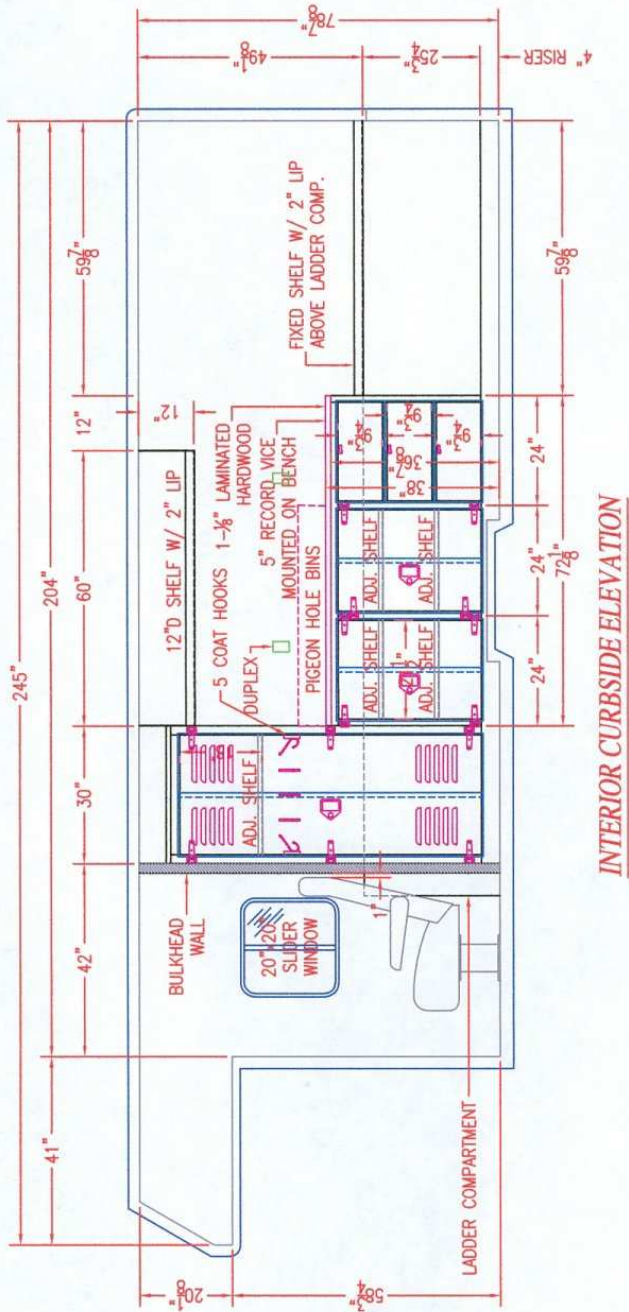
44.9 Cab & Van body Paint- One (1) year unlimited km











INTERIOR CURBSIDE ELEVATION

FORM O: QUESTIONNAIRE

1.0 **STATE** the delivery time of the complete order from the date of official notification of award: (See D5.1)

2.0 **LIST** any significant features that will be supplied standard on the unit being offered, but were not specifically mentioned in the Detailed Specifications:

3.0 **STATE** the location of the service facility:

4.0 Does the equipment being offered meet or exceed the minimum requirements of the Detailed Specifications?

5.0 **LIST** any deviations that might be considered less than equal to the Detailed Specifications:
