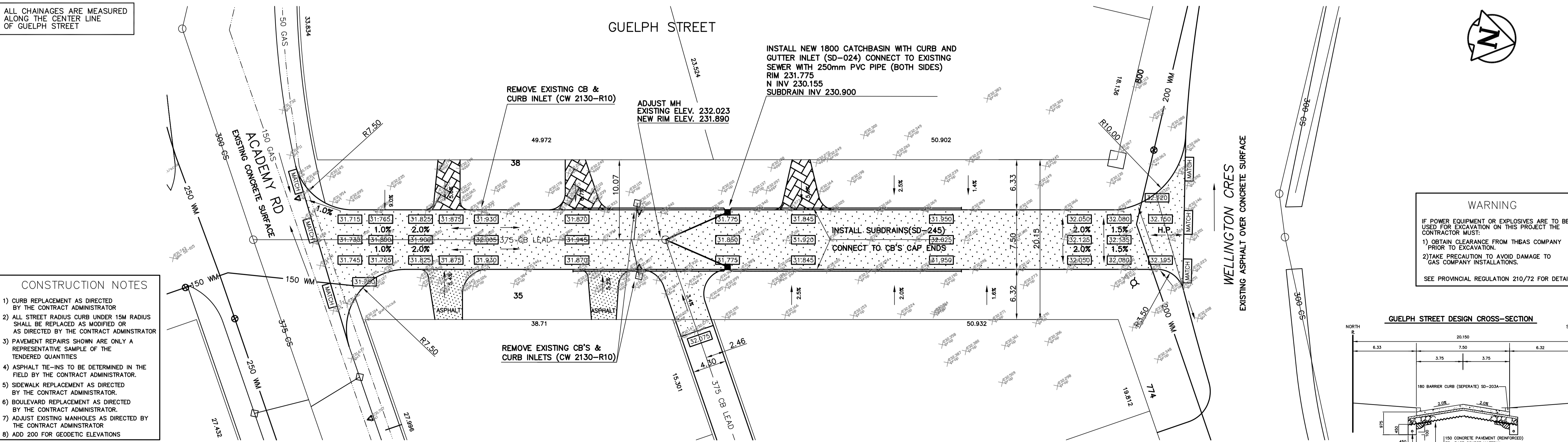


ALL CHAINAGES ARE MEASURED ALONG THE CENTER LINE OF GUELPH STREET



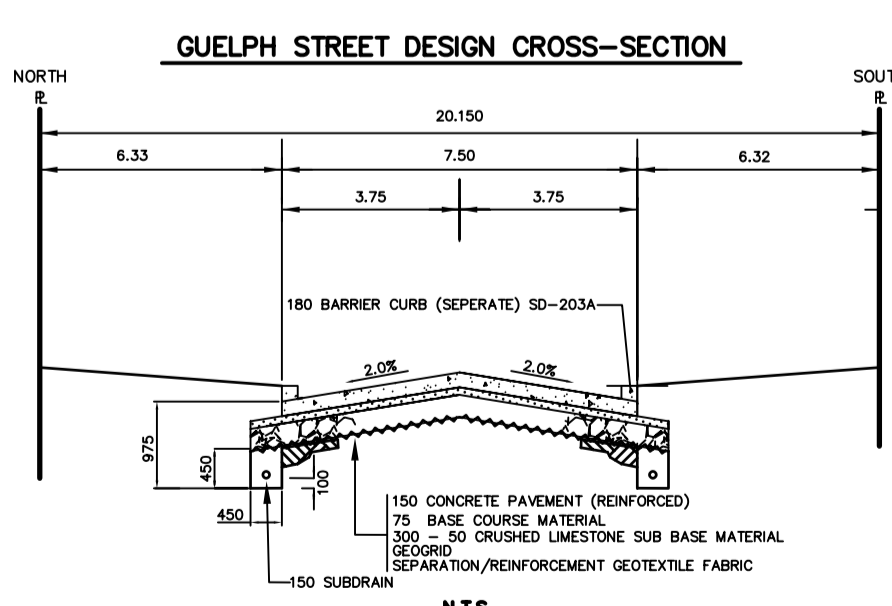
- CONSTRUCTION NOTES**
- 1) CURB REPLACEMENT AS DIRECTED BY THE CONTRACT ADMINISTRATOR
 - 2) ALL STREET RADIUS CURB UNDER 15M RADIUS SHALL BE REPLACED AS MODIFIED OR AS DIRECTED BY THE CONTRACT ADMINISTRATOR
 - 3) PAVEMENT REPAIRS SHOWN ARE ONLY A REPRESENTATIVE SAMPLE OF THE TENDERED QUANTITIES
 - 4) ASPHALT TIE-INS TO BE DETERMINED IN THE FIELD BY THE CONTRACT ADMINISTRATOR
 - 5) SIDEWALK REPLACEMENT AS DIRECTED BY THE CONTRACT ADMINISTRATOR
 - 6) BOULEVARD REPLACEMENT AS DIRECTED BY THE CONTRACT ADMINISTRATOR
 - 7) ADJUST EXISTING MANHOLES AS DIRECTED BY THE CONTRACT ADMINISTRATOR
 - 8) ADD 200 FOR GEODETIC ELEVATIONS

WARNING

IF POWER EQUIPMENT OR EXPLOSIVES ARE TO BE USED FOR EXCAVATION ON THIS PROJECT THE CONTRACTOR MUST:

- 1) OBTAIN CLEARANCE FROM THEAS COMPANY PRIOR TO EXCAVATION.
- 2) TAKE PRECAUTION TO AVOID DAMAGE TO GAS COMPANY INSTALLATIONS.

SEE PROVINCIAL REGULATION 210/72 FOR DETAILS



BID OPPORTUNITY NO. 189-2006

150 mm WM	WATERMAIN	150 mm WM	HYDRO	150 mm WM	WATERMAIN
⊕	HYDRANT VALVE	⊕	MTS CONCRETE ASPHALT	⊕	HYDRANT VALVE
⊕	LAND DRAINAGE SEWER	⊕	PAVING STONE	⊕	SEWER
⊕	WASTE WATER SEWER	⊕	CURB RENEWAL ELEVATIONS	⊕	
○	MANHOLE	●	PROPERTY LINE	⊕	
□	CATCH BASIN	▲	SURVEY BAR	⊕	
△	CURB INLET	⊕	CURB STOP	⊕	
☆	WOOD POLES	⊕	RAMP CURB	⊕	
⊕	LAMP STANDARD	⊕		⊕	
⊕	GAS	⊕		⊕	
---	EXISTING	---	EXISTING	---	EXISTING
---	LEGEND - PLAN	---	LEGEND - PLAN	---	LEGEND - PROFILE
---		---	PROPOSED	---	PROPOSED

LOCATION APPROVED UNDERGROUND STRUCTURES

SUPR. U/G STRUCTURES DATE

NOTE: LOCATION OF UNDERGROUND STRUCTURES AS SHOWN ARE BASED ON THE BEST INFORMATION AVAILABLE. BUT NO GUARANTEE IS GIVEN THAT THE GIVEN LOCATIONS ARE EXACT. CONFIRMATION OF EXISTENCE AND EXACT LOCATION OF ALL SERVICES MUST BE OBTAINED FROM THE INDIVIDUAL UTILITIES BEFORE PROCEEDING WITH CONSTRUCTION.

NO.	REVISIONS	DATE	BY

G.B.M. 52-015
ELEV. 231.743

**ENGINEERING DIVISION
TECHNOLOGY SERVICES BRANCH
106 - 1155 PACIFIC AVE**

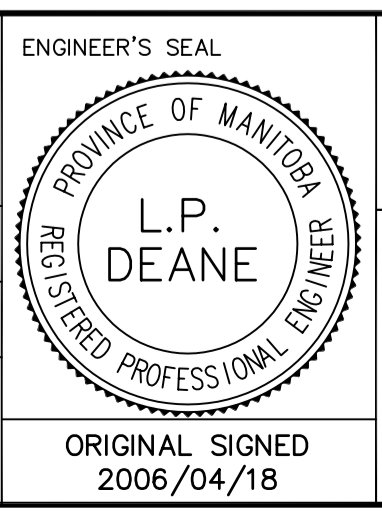
DESIGNED BY: DBT / ASF
CHECKED BY: DK / RKD
DRAWN BY: DBT / ASF
APPROVED BY: TMC

HOR. SCALE: 1 : 250
VERTICAL: 1 : 10

DATE: 2006/03/15

RELEASED FOR CONSTRUCTION

DATE: 2006/04/18



THE CITY OF WINNIPEG
PUBLIC WORKS DEPARTMENT

GUELPH STREET
FROM
ACADEMY ROAD TO WELLINGTON CRESCENT
RECONSTRUCTION AND RELATED WORKS
FROM STA. 1+00
TO STA. 2+09.96

CITY DRAWING NUMBER
SE-06-29
SHEET 1 OF 1

8