

ALL CHAINAGES ARE MEASURED ALONG THE CENTER LINE OF MULVEY AVENUE

CONSTRUCTION NOTES

- 1) CURB REPLACEMENT AS DIRECTED BY THE CONTRACT ADMINISTRATOR
- 2) ALL STREET RADIUS CURB UNDER 15M RADIUS SHALL BE REPLACED AS MODIFIED BARRIER CURB
- 3) PAVEMENT REPAIRS SHOWN ARE ONLY A REPRESENTATIVE SAMPLE OF THE TENDERED QUANTITIES
- 4) ALL STREET CURB SHALL BE BARRIER CURB AND APPROACH CURB SHALL BE 40mm LIP CURB AS DIRECTED BY THE CONTRACT ADMINISTRATOR
- 5) SIDEWALK REPLACEMENT AS DIRECTED BY THE CONTRACT ADMINISTRATOR
- 6) BOULEVARD REPLACEMENT AS DIRECTED BY THE CONTRACT ADMINISTRATOR
- 7) ADJUST EXISTING MANHOLES AS DIRECTED BY THE CONTRACT ADMINISTRATOR
- 8) ADD 200 FOR GEODETIC ELEVATIONS

WARNING
 IF POWER EQUIPMENT OR EXPLOSIVES ARE TO BE USED FOR EXCAVATION ON THIS PROJECT THE CONTRACTOR MUST:
 1) OBTAIN CLEARANCE FROM THEAS COMPANY PRIOR TO EXCAVATION
 2) TAKE PRECAUTION TO AVOID DAMAGE TO GAS COMPANY INSTALLATIONS.
 SEE PROVINCIAL REGULATION 210/72 FOR DETAILS

METRIC
 WHOLE NUMBERS INDICATE MILLIMETRES
 DECIMALIZED NUMBERS INDICATE METRES

BID OPPORTUNITY NO. 189-2006

EXISTING	PROPOSED	EXISTING	PROPOSED	EXISTING	PROPOSED	EXISTING	PROPOSED
150 mm WM	WATERMAIN	150 mm WM	HYDRO	150 mm WM	WATERMAIN	300 mm LDS	LAND DRAINAGE SEWER
Hydrant	HYDRANT	MTS	MTS	Hydrant	HYDRANT	WWS	WASTE WATER SEWER
Valve	VALVE			Valve	VALVE	Manhole	MANHOLE
300 mm LDS	LAND DRAINAGE SEWER	300 mm LDS		300 mm LDS	SEWER	Catch Basin	CATCH BASIN
250 mm WWS	WASTE WATER SEWER	250 mm WWS	CURB RENEWAL	250 mm WWS		Curb Inlet	CURB INLET
Manhole	MANHOLE	Manhole		Manhole		Wood Poles	WOOD POLES
Catch Basin	CATCH BASIN	Elevations	ELEVATIONS	Catch Basin	CATCH BASIN	Lamp Standard	LAMP STANDARD
Curb Inlet	CURB INLET	Property Line	PROPERTY LINE	Curb Inlet	CURB INLET	Gas	GAS
Wood Poles	WOOD POLES	Survey Bar	SURVEY BAR	Wood Poles	WOOD POLES		
Lamp Standard	LAMP STANDARD	Curb Stop	CURB STOP	Lamp Standard	LAMP STANDARD		
Gas	GAS	Ramp Curb	RAMP CURB	Gas	GAS		

LOCATION APPROVED UNDERGROUND STRUCTURES

DATE: _____

NOTE:
 LOCATION OF UNDERGROUND STRUCTURES AS SHOWN ARE BASED ON THE BEST INFORMATION AVAILABLE, BUT NO GUARANTEE IS GIVEN THAT ALL EXISTING UTILITIES ARE SHOWN OR THAT THE GIVEN LOCATIONS ARE EXACT. CONFIRMATION OF EXISTENCE AND EXACT LOCATION OF ALL SERVICES MUST BE OBTAINED FROM THE INDIVIDUAL UTILITIES BEFORE PROCEEDING WITH CONSTRUCTION.

G.B.M. 52 - 003
 ELEV. 232.737m

**ENGINEERING DIVISION
 TECHNOLOGY SERVICES BRANCH
 106 - 1155 PACIFIC AVE**

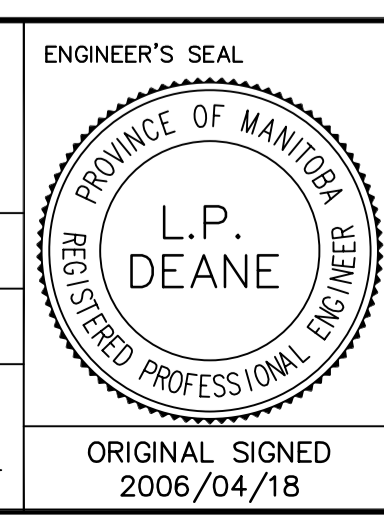
DESIGNED BY: ASF
 CHECKED BY: DK / RKD

DRAWN BY: ASF / SS
 APPROVED BY: TMC

HOR. SCALE: 1 : 250
 VERTICAL: 1 : 10

RELEASED FOR CONSTRUCTION

DATE: 2006/02/13



THE CITY OF WINNIPEG
 PUBLIC WORKS DEPARTMENT

MULVEY AVENUE
 FROM DALY STREET NORTH TO PEMBINA HIGHWAY
 RECONSTRUCTION AND RELATED WORKS

CITY DRAWING NUMBER: SE-06-27
 SHEET: 1 OF 2

6