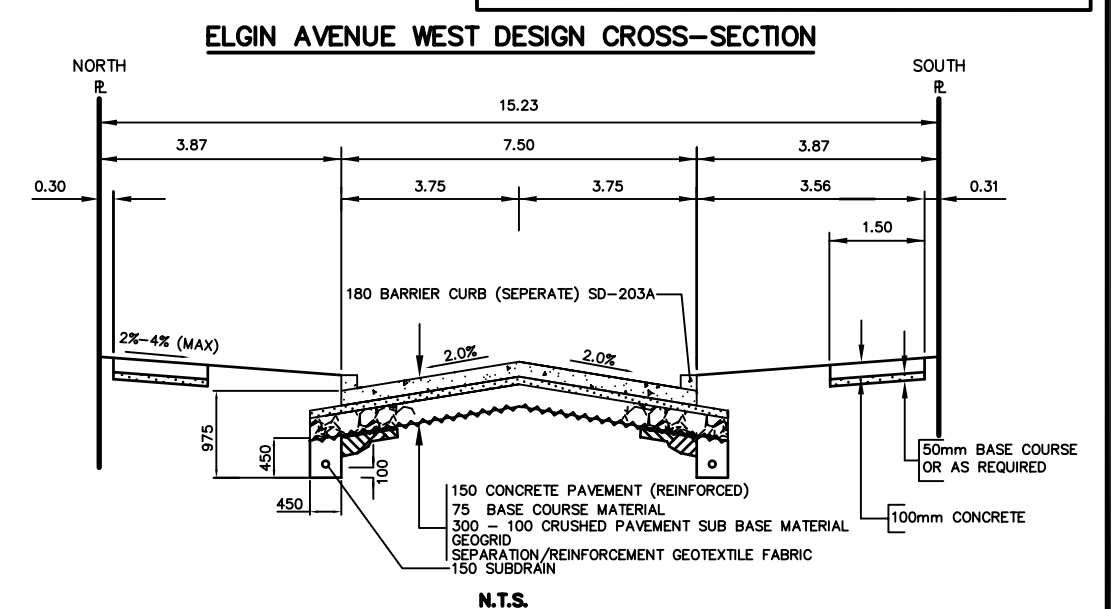


WARNING
 IF POWER EQUIPMENT OR EXPLOSIVES ARE TO BE USED FOR EXCAVATION ON THIS PROJECT THE CONTRACTOR MUST:
 1) OBTAIN CLEARANCE FROM THE GAS COMPANY PRIOR TO EXCAVATION.
 2) TAKE PRECAUTION TO AVOID DAMAGE TO GAS COMPANY INSTALLATIONS.
 SEE PROVINCIAL REGULATION 210/72 FOR DETAILS

- CONSTRUCTION NOTES**
- CURB REPLACEMENT AS DIRECTED BY THE CONTRACT ADMINISTRATOR.
 - ALL STREET RADIUS CURB UNDER 15M RADIUS SHALL BE REPLACED AS MODIFIED OR AS DIRECTED BY THE CONTRACT ADMINISTRATOR.
 - PAVEMENT REPAIRS SHOWN ARE ONLY A REPRESENTATIVE SAMPLE OF THE TENDERED QUANTITIES.
 - ASPHALT TIE-INS TO BE DETERMINED IN THE FIELD BY THE CONTRACT ADMINISTRATOR.
 - SIDEWALK REPLACEMENT AS DIRECTED BY THE CONTRACT ADMINISTRATOR.
 - BOULEVARD REPLACEMENT AS DIRECTED BY THE CONTRACT ADMINISTRATOR.
 - ADJUST EXISTING MANHOLES AS DIRECTED BY THE CONTRACT ADMINISTRATOR.
 - ADD 200 FOR GEODETIC ELEVATIONS.



ALL CHAINAGES ARE MEASURED ALONG THE CENTER LINE OF ELGIN AVENUE WEST

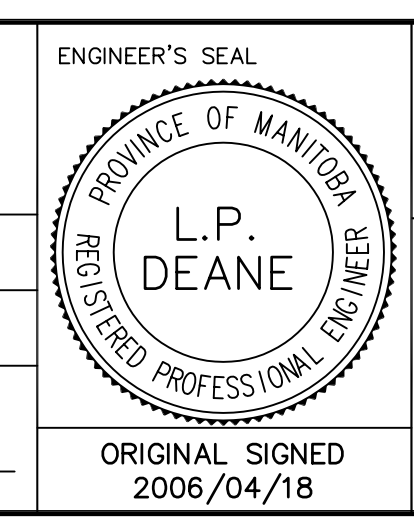
BID OPPORTUNITY NO. 189-2006

150 mm WM	WATERMAIN	150 mm WM	HYDRO	150 mm WM	WATERMAIN
⊕	HYDRANT	⊕	MTS	+	HYDRANT
⊙	VALVE	⊙	CONCRETE	+	VALVE
300 mm LDS	LAND DRAINAGE SEWER	300 mm LDS	LIMIT OF ASPHALT	300 mm LDS	SEWER
250 mm WWS	WASTE WATER SEWER	250 mm WWS	CURB RENEWAL	---	SOUTH/EAST SW
○	MANHOLE	●	ASPHALT	---	NORTH/WEST SW
□	CATCH BASIN	■	ELEVATIONS	[31.000]	SOUTH/EAST R
△	CURB INLET	▲	PROPERTY LINE	---	NORTH/WEST R
☆	WOOD POLES	⊕	SURVEY BAR	+	⊕ PROFILE
⊙	LAMP STANDARD	○	CURB STOP	---	SOUTH/EAST GUTTER
---	GAS	---	RAMP CURB	---	NORTH/WEST GUTTER
---	EXISTING	---	LEGEND - PLAN	---	LEGEND - PROFILE
---	PROPOSED	---	LEGEND - PLAN	---	PROPOSED

LOCATION APPROVED
 UNDERGROUND STRUCTURES
 SUPR. U/G STRUCTURES DATE COMMITTEE
 NOTE:
 LOCATION OF UNDERGROUND STRUCTURES AS SHOWN ARE BASED ON THE BEST INFORMATION AVAILABLE. BUT NO GUARANTEE IS GIVEN THAT ALL EXISTING UTILITIES ARE SHOWN OR THAT THE GIVEN LOCATIONS ARE EXACT. CONFIRMATION OF EXISTENCE AND EXACT LOCATION OF ALL SERVICES MUST BE OBTAINED FROM THE INDIVIDUAL UTILITIES BEFORE PROCEEDING WITH CONSTRUCTION.

G.B.M. 36-028
 ELEV. 232.917
 NO. REVISIONS
 DATE BY

ENGINEERING DIVISION
TECHNOLOGY SERVICES BRANCH
 106 - 1155 PACIFIC AVE
 DESIGNED BY: DBT / ASF
 CHECKED BY: DK / RKD
 DRAWN BY: DBT / ASF
 APPROVED BY: TMC
 HOR. SCALE: 1 : 250
 VERTICAL: 1 : 10
 RELEASED FOR CONSTRUCTION
 DATE: 2006/03/17



THE CITY OF WINNIPEG
 PUBLIC WORKS DEPARTMENT
ELGIN AVENUE WEST
 FROM WORTH STREET TO CECIL STREET
 RECONSTRUCTION AND RELATED WORKS
 FROM STA. 2+40 TO STA. 3+78.40
 CITY DRAWING NUMBER SE-06-24
 SHEET 2 OF 2
 3