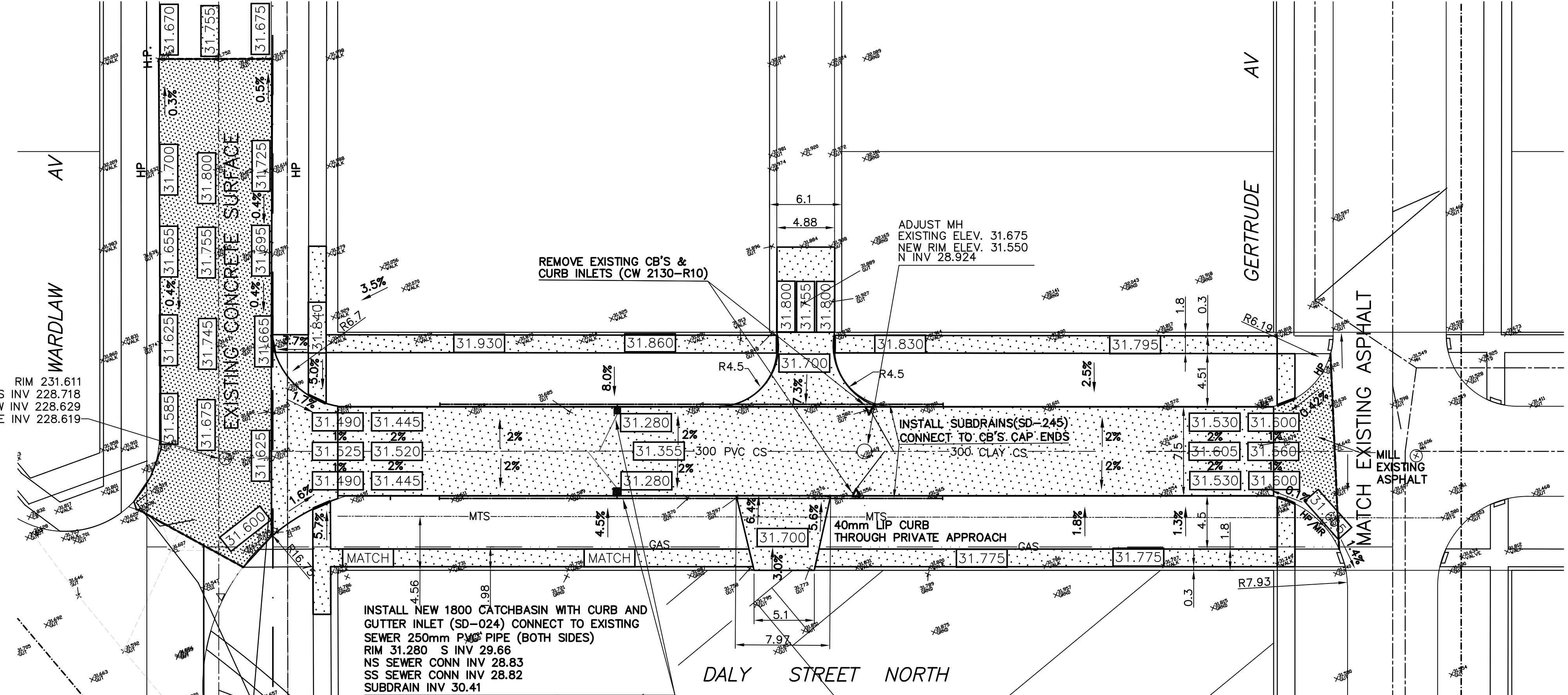
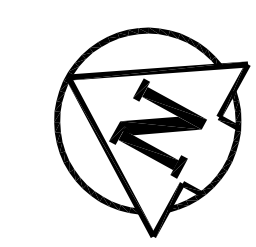


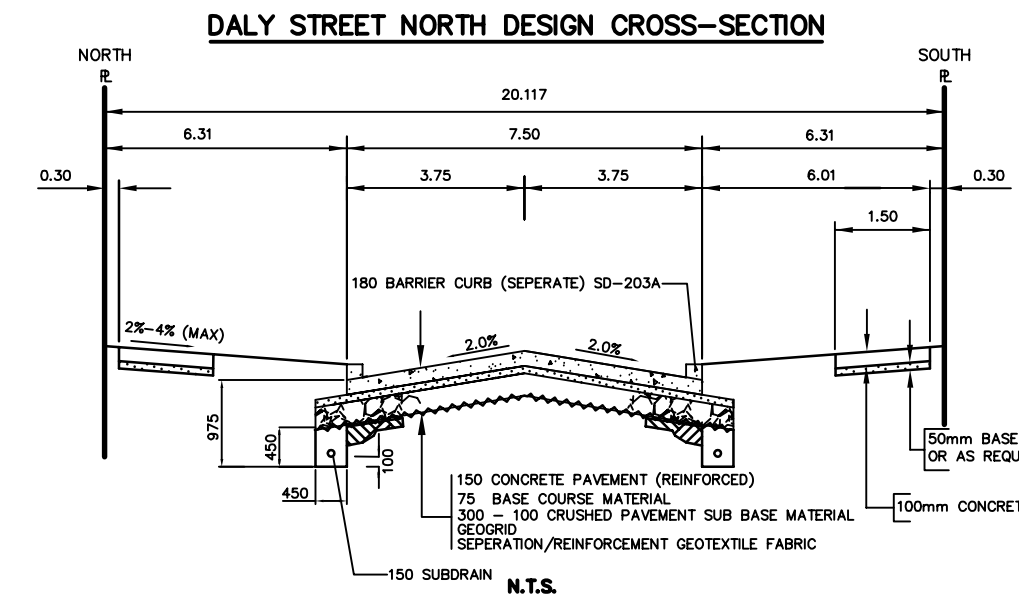
0+94.40 RECONSTRUCTION LIMIT
 1+09.00 S PL WARDLAW AVE
 1+02.80 END SUBDRAINS
 1+05.00 CL GB
 1+10.00
 1+21.79 SS CONN @ 300 CS
 1+21.80 NS CONN @ 300 CS
 1+23.78 LP
 1+30.00
 1+42.80 END SUBDRAINS
 1+44.39 CS MH
 1+60.00
 1+79.00 CL GB
 1+79.00 N PL GERTRUDE AVE
 1+84.07 RECONSTRUCTION LIMIT
 2+00.00



ALL CHAINAGES ARE MEASURED ALONG THE CENTER LINE OF DALY STREET NORTH



WARNING
 IF POWER EQUIPMENT OR EXPLOSIVES ARE TO BE USED FOR EXCAVATION ON THIS PROJECT THE CONTRACTOR MUST:
 1) OBTAIN CLEARANCE FROM THE GAS COMPANY PRIOR TO EXCAVATION.
 2) TAKE PRECAUTION TO AVOID DAMAGE TO GAS COMPANY INSTALLATIONS.
 SEE PROVINCIAL REGULATION 210/72 FOR DETAILS



CONSTRUCTION NOTES
 1) CURB REPLACEMENT AS DIRECTED BY THE CONTRACT ADMINISTRATOR
 2) ALL STREET RADIUS CURBS UNDER 15M RADIUS SHALL BE REPLACED AS MODIFIED OR AS DIRECTED BY THE CONTRACT ADMINISTRATOR
 3) PAVEMENT REPAIRS SHOWN ARE ONLY A REPRESENTATIVE SAMPLE OF THE TENDERED QUANTITIES
 4) ASPHALT TIE-INS TO BE DETERMINED IN THE FIELD BY THE CONTRACT ADMINISTRATOR.
 5) SIDEWALK REPLACEMENT AS DIRECTED BY THE CONTRACT ADMINISTRATOR.
 6) BOULEVARD REPLACEMENT AS DIRECTED BY THE CONTRACT ADMINISTRATOR.
 7) ADJUST EXISTING MANHOLES AS DIRECTED BY THE CONTRACT ADMINISTRATOR
 8) ADD 200 FOR GEODETIC ELEVATIONS

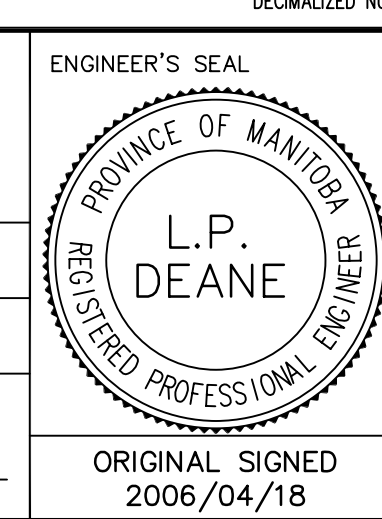
METRIC
 WHOLE NUMBERS INDICATE MILLIMETRES
 DECIMALIZED NUMBERS INDICATE METRES

150 mm WM	WATERMAIN	150 mm WM	HYDRO	150 mm WM	WATERMAIN
+	HYDRANT VALVE	+	MTS	+	HYDRANT VALVE
300 mm LDS	LAND DRAINAGE SEWER	300 mm LDS	LIMIT OF ASPHALT	X	SEWER
250 mm WWS	WASTE WATER SEWER	250 mm WWS	ASPHALT	X	SEWER
○	MANHOLE	○	CURB RENEWAL	○	EXISTING JOINTS
□	CATCH BASIN	□	CONCRETE	○	SOUTH/EAST WALK
△	CURB INLET	△	ELEVATIONS	○	NORTH/WEST WALK
☆	WOOD POLES	☆	PROPERTY LINE	○	PROFILE
○	LAMP STANDARD	○	SURVEY BAR	○	SOUTH/EAST GUTTER
○	GAS	○	CURB STOP	○	NORTH/WEST GUTTER
---	EXISTING	---	RAMP CURB	---	---
---	LEGEND - PLAN	---	---	---	---
---	PROPOSED	---	---	---	---
---	EXISTING	---	---	---	---
---	LEGEND - PLAN	---	---	---	---
---	PROPOSED	---	---	---	---
---	EXISTING	---	---	---	---
---	LEGEND - PROFILE	---	---	---	---
---	PROPOSED	---	---	---	---
---	EXISTING	---	---	---	---

LOCATION APPROVED UNDERGROUND STRUCTURES
 SUPR. U/G STRUCTURES DATE COMMITTEE
 NOTE:
 LOCATION OF UNDERGROUND STRUCTURES AS SHOWN ARE BASED ON THE BEST INFORMATION AVAILABLE, BUT NO GUARANTEE IS GIVEN THAT ALL EXISTING UTILITIES ARE SHOWN OR THAT THE GIVEN LOCATIONS ARE EXACT. CONFIRMATION OF EXISTENCE AND EXACT LOCATION OF ALL SERVICES MUST BE OBTAINED FROM THE INDIVIDUAL UTILITIES BEFORE PROCEEDING WITH CONSTRUCTION.

G.B.M. 52-035	ELEV. 232.387
NO.	REVISIONS
DATE	BY

ENGINEERING DIVISION TECHNOLOGY SERVICES BRANCH 106 - 1155 PACIFIC AVE			
DESIGNED BY	ASF	CHECKED BY	RKD
DRAWN BY	ASF	APPROVED BY	TMC
HOR. SCALE:	1 : 250	RELEASED FOR CONSTRUCTION	
VERTICAL:	1 : 20	DATE	2006/03/17



THE CITY OF WINNIPEG
 PUBLIC WORKS DEPARTMENT

DALY STREET NORTH
 FROM WARDLAW AVENUE TO GERTRUDE AVENUE
 RECONSTRUCTION AND RELATED WORKS

FROM STA. 0+94.40
 TO STA. 1+84.07

CITY DRAWING NUMBER SE-06-22
 SHEET 1 OF 1

1