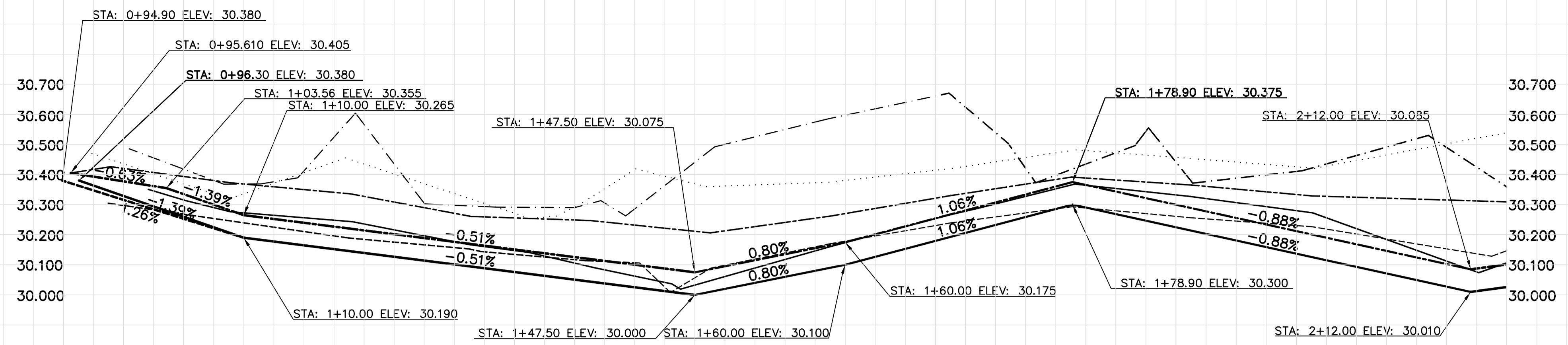
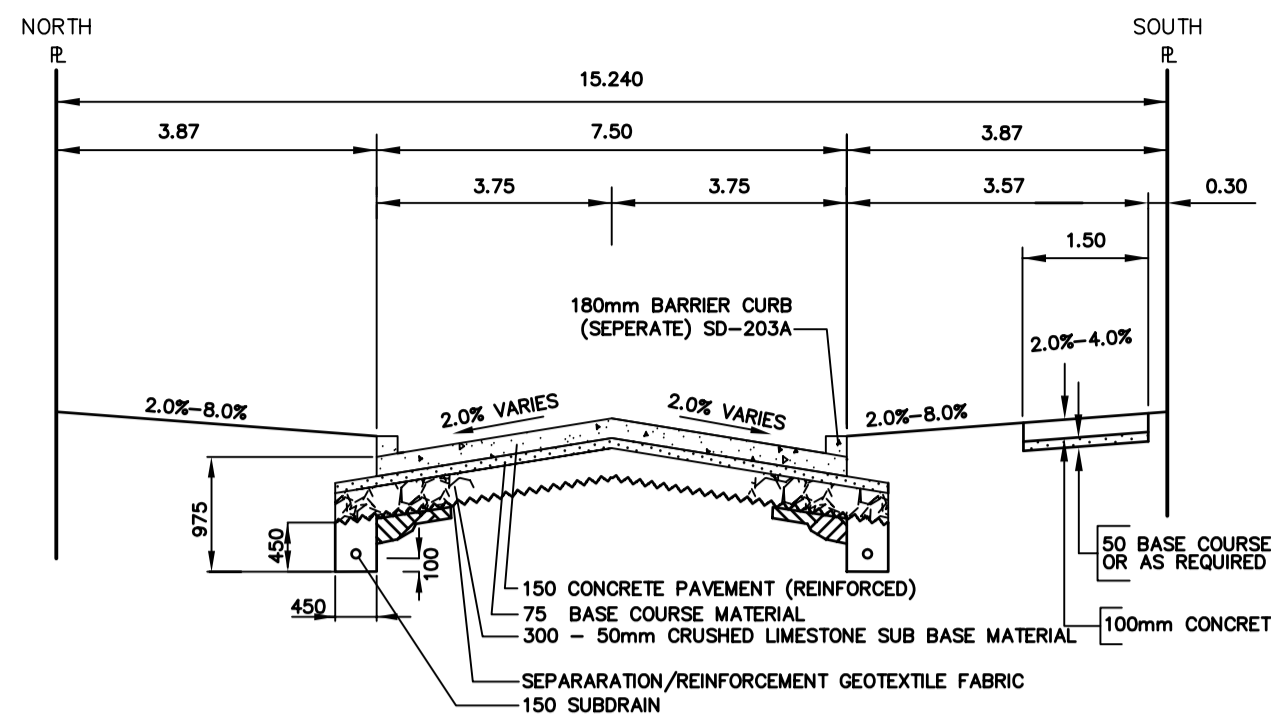


TYPICAL RECONSTRUCTION CROSS-SECTION

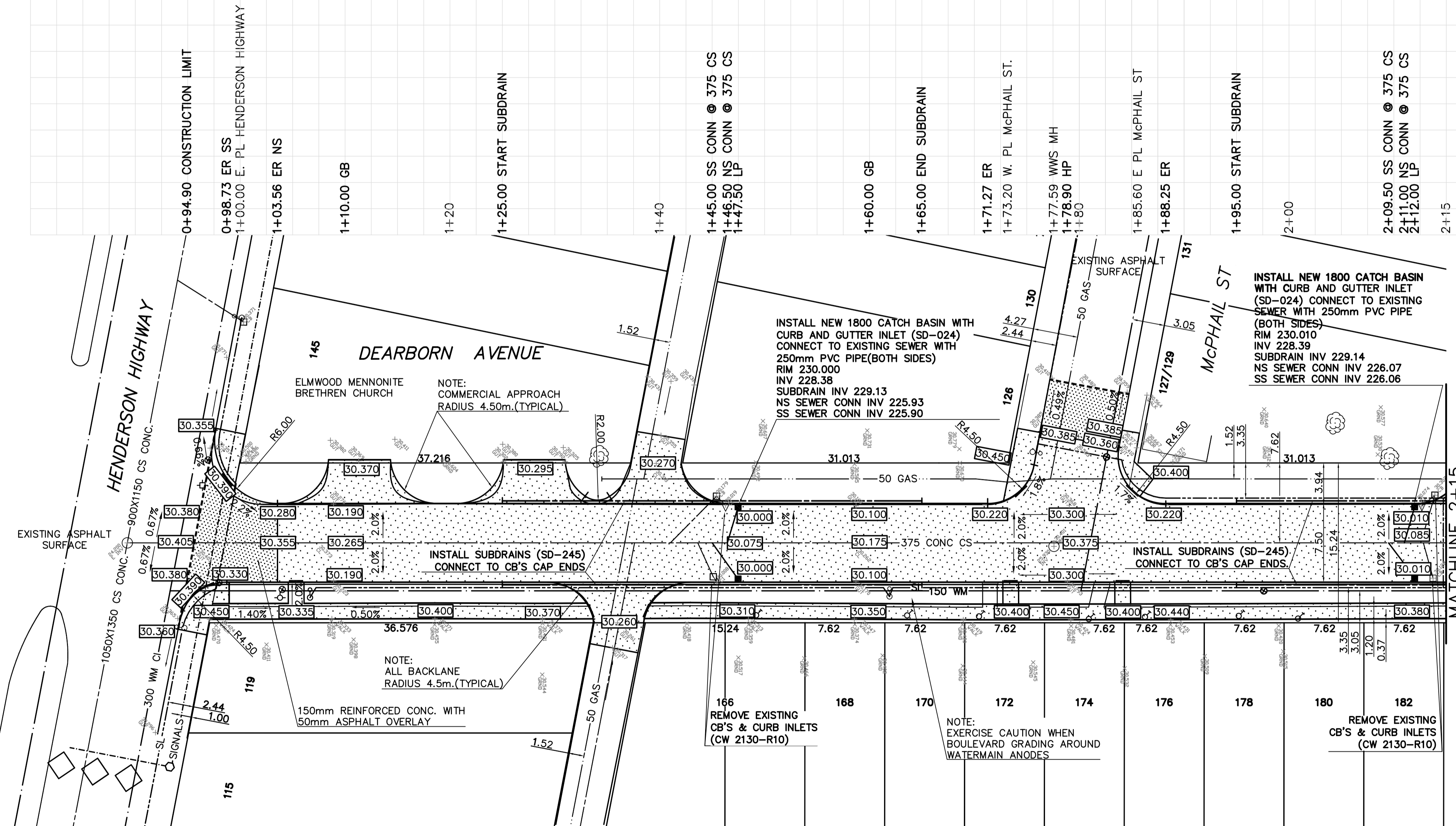


PRELIMINARY
NOT TO BE USED FOR CONSTRUCTION

WARNING
IF POWER EQUIPMENT OR EXPLOSIVES ARE TO BE USED FOR EXCAVATION ON THIS PROJECT THE CONTRACTOR MUST:
1) OBTAIN CLEARANCE FROM THE GAS UTILITY PRIOR TO EXCAVATION.
2) TAKE PRECAUTION TO AVOID DAMAGE TO GAS UTILITY INSTALLATIONS.
SEE PROVINCIAL REGULATION 210/72 FOR DETAILS

CONSTRUCTION NOTES
1) CURB REPLACEMENT AS DIRECTED BY THE CONTRACT ADMINISTRATOR
2) ALL STREET RADIUS CURB UNDER 15M RADIUS SHALL BE REPLACED AS MODIFIED OR AS DIRECTED BY THE CONTRACT ADMINISTRATOR
3) PAVEMENT REPAIRS SHOWN ARE ONLY A REPRESENTATIVE SAMPLE OF THE TENDERED QUANTITIES
4) ASPHALT TIE-INS TO BE DETERMINED IN THE FIELD BY THE CONTRACT ADMINISTRATOR.
5) SIDEWALK REPLACEMENT AS DIRECTED BY THE CONTRACT ADMINISTRATOR.
6) BOULEVARD REPLACEMENT AS DIRECTED BY THE CONTRACT ADMINISTRATOR.
7) ADJUST EXISTING MANHOLES AS DIRECTED BY THE CONTRACT ADMINISTRATOR.

ALL CHAINAGES ARE MEASURED ALONG THE CENTER LINE OF DEARBORN AVENUE



METRIC
WHOLE NUMBERS INDICATE MILLIMETRES
DECIMAL NUMBERS INDICATE METRES

BID OPPORTUNITY NO. 188-2006

| EXISTING | LEGEND - PLAN | PROPOSED | EXISTING | LEGEND - PLAN | PROPOSED | EXISTING | LEGEND - PROFILE | PROPOSED |
|----------|---------------------|----------|--------------|------------------|----------|-------------------|------------------|----------|
| 150 WM | WATERMAIN | 150 WM | HYDRO | MTS | 150 WM | WATERMAIN | 300 LBS | SEWER |
| 300 LBS | LAND DRAINAGE SEWER | 300 LBS | CONCRETE | LIMIT OF ASPHALT | 300 LBS | SOUTH/EAST WALK | | |
| 250 CS | COMBINED SEWER | 250 CS | CURB RENEWAL | ASPHALT | | NORTH/WEST WALK | | |
| ○ | MANHOLE | ● | ELEVATIONS | PROPERTY LINE | 31.000 | SOUTH/EAST R | | |
| □ | CATCH BASIN | ■ | SURVEY BAR | CURB STOP | | NORTH/WEST R | | |
| △ | CURB INLET | ▲ | RAMP CURB | | | SOUTH/EAST GUTTER | | |
| ☆ | WOOD POLES | ★ | | | | NORTH/WEST GUTTER | | |
| ∞ | LAMP STANDARD | ∞ | | | | | | |
| | GAS | | | | | | | |

LOCATION APPROVED
UNDERGROUND STRUCTURES

SUPR. U/G STRUCTURES DATE COMMITTEE

NOTE:
LOCATION OF UNDERGROUND STRUCTURES AS SHOWN ARE BASED ON THE BEST INFORMATION AVAILABLE. BUT NO GUARANTEE IS GIVEN THAT ALL EXISTING UTILITIES ARE SHOWN OR THAT THE GIVEN LOCATIONS ARE EXACT. CONFIRMATION OF EXISTENCE AND EXACT LOCATION OF ALL SERVICES MUST BE OBTAINED FROM THE INDIVIDUAL UTILITIES BEFORE PROCEEDING WITH CONSTRUCTION.

| NO. | REVISIONS | DATE | BY |
|-----|-----------|------|----|
| | | | |

B.M. ELEV. GBM 27-035 230.466

ENGINEERING DIVISION
TECHNOLOGY SERVICES BRANCH
106 - 1155 PACIFIC AVE

| | |
|------------------|------------------------|
| DESIGNED BY C.T. | CHECKED BY D.K./R.K.D. |
| DRAWN BY C.T. | APPROVED BY T.M.C. |

HOR. SCALE: 1 : 250
VERTICAL: 1 : 10

DATE 2006/03/10

ENGINEER'S SEAL
PROVINCE OF MANITOBA
REGISTERED PROFESSIONAL ENGINEER
L.P. DEANE
ORIGINAL SIGNED 2006/04/07

THE CITY OF WINNIPEG
PUBLIC WORKS DEPARTMENT

DEARBORN AVENUE
FROM HENDERSON HIGHWAY TO BRAZIER STREET
RECONSTRUCTION AND RELATED WORKS
FROM HENDERSON HIGHWAY TO STA: 2+15

CITY DRAWING NUMBER SE-06-07
SHEET 1 OF 2
1