

- CONSTRUCTION NOTES**
- 1) CURB REPLACEMENT AS DIRECTED BY THE CONTRACT ADMINISTRATOR
 - 2) ALL STREET RADIUS CURB UNDER 15M RADIUS SHALL BE REPLACED AS MODIFIED OR AS DIRECTED BY THE CONTRACT ADMINISTRATOR
 - 3) PAVEMENT REPAIRS SHOWN ARE ONLY A REPRESENTATIVE SAMPLE OF THE TENDERED QUANTITIES
 - 4) ASPHALT TIE-INS ON APPROACHES TO BE DETERMINED IN THE FIELD BY THE CONTRACT ADMINISTRATOR.
 - 5) ALL BULLNOSES TO HAVE SLOPED FACE.

WARNING

IF POWER EQUIPMENT OR EXPLOSIVES ARE TO BE USED FOR EXCAVATION ON THIS PROJECT THE CONTRACTOR MUST:

- 1) OBTAIN CLEARANCE FROM THE GAS UTILITY PRIOR TO EXCAVATION.
- 2) TAKE PRECAUTION TO AVOID DAMAGE TO GAS UTILITY INSTALLATIONS.

SEE PROVINCIAL REGULATION 210/72 FOR DETAILS

METRIC
WHOLE NUMBERS INDICATE MILLIMETRES
DECIMALIZED NUMBERS INDICATE METRES

BID OPPORTUNITY NO. 186-2006

150 mm WM	WATERMAIN	150 mm WM	HYDRO	---	---	GUTTER	---
⊕	HYDRANT	⊕	MTS	---	---	MEDIAN GUTTER	---
⊙	VALVE	⊙	GAS	---	---	WATERMAIN	---
⊛	CURB STOP	⊛	CONCRETE	---	---	HYDRANT	+
⊚	PLANTER	⊚	CURB RENEWAL	---	---	VALVE	x
⊘	UNISTONE	⊘	ELEVATIONS	231.000	---	SEWER	400 mm LDS
○	MANHOLE	○	PROPERTY LINE	---	---	---	---
□	CATCH BASIN	□	SURVEY BAR	---	---	---	---
△	CURB INLET	△	GEODETIC BENCH MARK	---	---	---	---
○→	LAMP STANDARD	○→	RAMP CURB	---	---	---	---
○→	TRAFFIC SIGNAL POLE	○→	GUARD RAIL	---	---	---	---
EXISTING	LEGEND - PLAN	PROPOSED	EXISTING	LEGEND - PLAN	PROPOSED	EXISTING	LEGEND - PROFILE

LOCATION APPROVED
UNDERGROUND STRUCTURES

SUPR. U/G STRUCTURES COMMITTEE DATE

NOTE:
LOCATION OF UNDERGROUND STRUCTURES AS SHOWN ARE BASED ON THE BEST INFORMATION AVAILABLE. BUT NO GUARANTEE IS GIVEN THAT THE GIVEN LOCATIONS ARE EXACT. CONFIRMATION OF EXISTENCE AND EXACT LOCATION OF ALL SERVICES MUST BE OBTAINED FROM THE INDIVIDUAL UTILITIES BEFORE PROCEEDING WITH CONSTRUCTION.

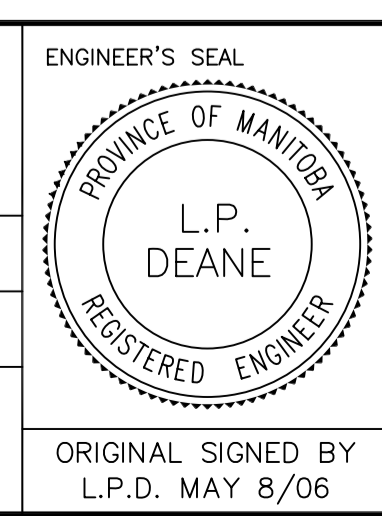
B.M. ELEV.	GBM 37-092	232.653
NO.	REVISIONS	DATE BY

ENGINEERING DIVISION
TECHNOLOGY SERVICES BRANCH
106 - 1155 PACIFIC AVE

DESIGNED BY A.P.
CHECKED BY B.K./A.P.
DRAWN BY B.B.
APPROVED BY L.P.D.

HOR. SCALE: 1 : 250
VERTICAL: 1 : 10

DATE 2006/05/03



THE CITY OF WINNIPEG
PUBLIC WORKS DEPARTMENT

PORTAGE AVENUE (WESTBOUND)
FROM MCGEE STREET TO MINTO STREET
ASPHALT RESURFACING AND ASSOCIATED WORKS
FROM STA. 6+75 TO STA. 8+25

CITY DRAWING NUMBER SE-06-16
SHEET 5 OF 10

5