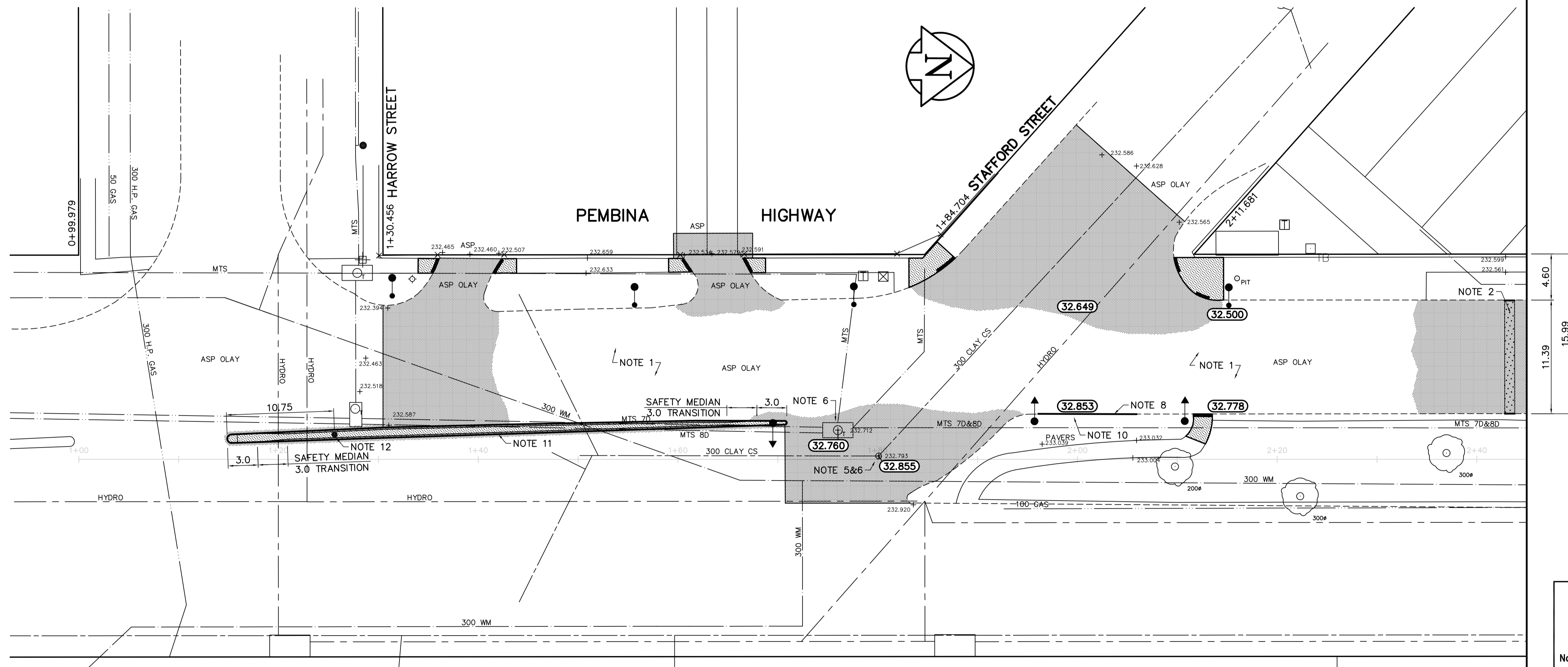


KEY PLAN



- REFERENCE NOTES**
- BASELINE IS CENTRED BETWEEN SOUTHBOUND MEDIAN AND GUTTER BACK OF CURB LINES.
 - LEGAL PLAN - L.B.I.S.
 - ADD 200.000 TO OBTAIN GEODETIC DATUM.
 - PAVEMENT DIMENSIONS ARE TO BACK OF CURB.
 - EARTH TECH FIELD BOOK NO. 4453.

- CONSTRUCTION NOTES**
- PLANE EXISTING OVERLAY AND CONSTRUCT NEW ASPHALTIC CONCRETE OVERLAY
 - CONSTRUCT NEW 200mm PLAIN DOWELLED CONCRETE PAVEMENT C/W ASPHALTIC CONCRETE OVERLAY
 - ABANDON EXISTING DRAINAGE INLET
 - INSTALL NEW CURB AND GUTTER INLET c/w CATCHPIT (SD-023) AND CONNECT TO EXISTING CATCHBASIN
 - ADJUST EXISTING MANHOLE FRAME AND COVER
 - INSTALL NEW CAST IRON RISER RING
 - CONSTRUCT NEW MONOLITHIC CURB AND SIDEWALK
 - RENEW CURB AND ADJUST EXISTING PRECAST SIDEWALK BLOCK
 - ADJUST EXISTING CATCHBASIN FRAME AND COVER
 - REGRADE EXISTING PAVING STONES
 - CONSTRUCT NEW CONCRETE SAFETY MEDIAN
 - CONSTRUCT NEW CAST-IN-PLACE CONCRETE PILE FOUNDATION S738

APEGM
 Certificate of Authorization
 Earth Tech Canada Inc.
 No. 730 Expiry: April 30, 2006

METRIC
 WHOLE NUMBERS INDICATE MILLIMETRES
 DECIMALIZED NUMBERS INDICATE METRES

EXISTING	LEGEND - PLAN	PROPOSED	EXISTING	LEGEND - PLAN	PROPOSED	EXISTING	LEGEND - PROFILE	PROPOSED
150 mm W.M.	WATERMAIN	150 mm W.M.	HYDRO	M.T.S.	CONCRETE	PROPERTY LINE	PROPERTY LINE	PROPERTY LINE
300mm L.D.S.	LAND DRAINAGE SEWER	300mm L.D.S.	CONCRETE	ASPHALT	PROPERTY LINE	PROPERTY LINE	PROPERTY LINE	PROPERTY LINE
250mm W.W.S.	WASTEWATER SEWER	250mm W.W.S.	PROPERTY LINE	PROPERTY LINE	PROPERTY LINE	PROPERTY LINE	PROPERTY LINE	PROPERTY LINE
MANHOLE	MANHOLE	MANHOLE	SURVEY BAR	SURVEY BAR	SURVEY BAR	SURVEY BAR	SURVEY BAR	SURVEY BAR
CATCH BASIN	CATCH BASIN	CATCH BASIN	ELEVATION	ELEVATION	ELEVATION	ELEVATION	ELEVATION	ELEVATION
CURB INLET	CURB INLET	CURB INLET	TREE	TREE	TREE	TREE	TREE	TREE
JUNCTIONS	JUNCTIONS	JUNCTIONS	SIDEWALK RAMP	SIDEWALK RAMP	SIDEWALK RAMP	SIDEWALK RAMP	SIDEWALK RAMP	SIDEWALK RAMP
CULVERT	CULVERT	CULVERT	CONCRETE SIDEWALK	CONCRETE SIDEWALK	CONCRETE SIDEWALK	CONCRETE SIDEWALK	CONCRETE SIDEWALK	CONCRETE SIDEWALK
GAS	GAS	GAS	FENCE	FENCE	FENCE	FENCE	FENCE	FENCE

LOCATION APPROVED UNDERGROUND STRUCTURES

SUPV. U/G STRUCTURES DATE COMMITTEE

NOTE:
 LOCATION OF UNDERGROUND STRUCTURES AS SHOWN ARE BASED ON THE BEST INFORMATION AVAILABLE, BUT NO GUARANTEE IS GIVEN THAT ALL EXISTING UTILITIES ARE SHOWN OR THAT THE GIVEN LOCATIONS ARE EXACT. CONFIRMATION OF EXISTENCE AND EXACT LOCATION OF ALL SERVICES MUST BE OBTAINED FROM THE INDIVIDUAL UTILITIES BEFORE PROCEEDING WITH CONSTRUCTION.

B.M. 52-006
 ELEV. 232.631

Tilt. in W. Conc. foundation of No. 750
 Pembina Hwy. opposite Taylor Ave.
 0.5 m N. of S.W. Cor.

NO.	REVISIONS	DATE	BY
0	ISSUED FOR TENDER	APR 7/06	KWR
A	ISSUED FOR REVIEW	MAR 10/06	KWR

EarthTech
 A Tyco International Ltd. Company

DESIGNED BY: BK/RTC
 DRAWN BY: BK
 CHECKED BY: KWR
 APPROVED BY: [Signature]

HOR. SCALE: 1:250
 VERTICAL: 1:10

RELEASED FOR CONSTRUCTION BY: ORIGINAL SIGNED
 DATE: APR 7/06

CONSULTANT DRAWING NO. CT02

ENGINEER'S SEAL
 PROVINCE OF MANITOBA
 ORIGINAL SIGNED
 K.W.
 APR 7/06
 REGISTERED PROFESSIONAL ENGINEER

THE CITY OF WINNIPEG
 PUBLIC WORKS DEPARTMENT
 ENGINEERING DIVISION

**PEMBINA HIGHWAY (SOUTHBOUND)
 GRANT AVENUE TO HARROW STREET
 STREET RESURFACING**

CITY DRAWING NUMBER P-3265-02
 SHEET 2 OF 9

PLAN/PROFILE
 HARROW STREET TO STA. 2+45