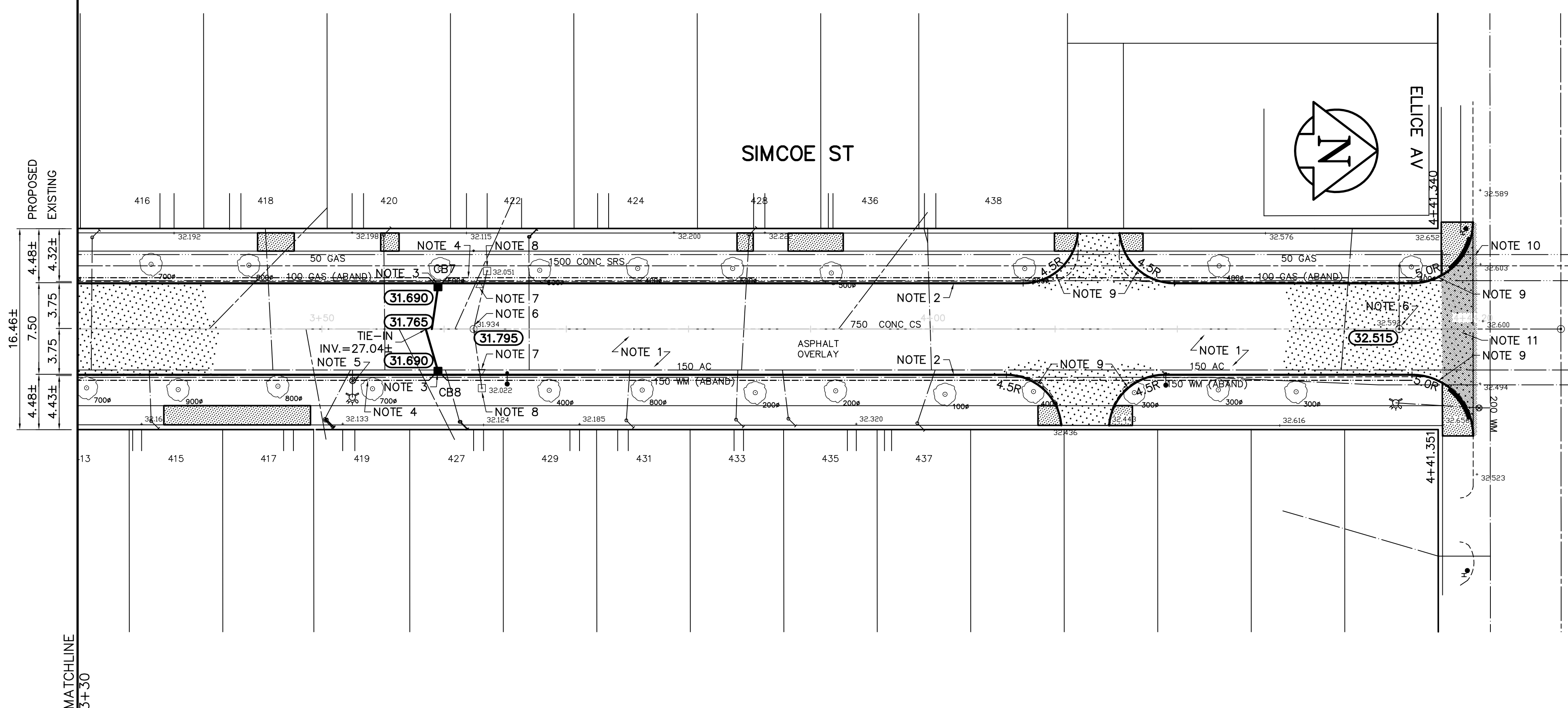


**PAVEMENT RECONSTRUCTION SECTION**

DESCRIPTION	RIM	INVERT			
		NORTH	SOUTH	EAST	WEST
CB 7	231.690			230.090	
CB 8	231.690				230.090



- REFERENCE NOTES**
- PAVEMENT DIMENSIONS ARE TO BACK OF CURB
  - ADD 200.000 TO OBTAIN GEODETIC DATUM
  - BASELINE IS CENTRE LINE RIGHT-OF-WAY
  - PROPERTY LINES OBTAINED FROM CITY OF WINNIPEG L.B.I.S., AND NO SCALE FACTOR WAS APPLIED.
- CONSTRUCTION NOTES**
- REMOVE EXISTING PAVEMENT AND CONSTRUCT 150mm REINFORCED CONCRETE PAVEMENT
  - CONSTRUCT NEW CONCRETE BARRIER CURB (SEPARATE)
  - INSTALL NEW CURB AND GUTTER INLET c/w CATCH BASIN (SD024) AND CONNECT NEW 250mm LEAD TO EXISTING COMBINED SEWER
  - INSTALL 150mm SUBDRAIN
  - ADJUST EXISTING WATER VALVE TO GRADE
  - ADJUST EXISTING MANHOLE/CATCH BASIN TO GRADE
  - ABANDON EXISTING DRAINAGE INLET
  - REMOVE EXISTING CATCH BASIN
  - CONSTRUCT NEW MODIFIED BARRIER CURB (INTEGRAL)
  - REMOVE EXISTING ASPHALT OVERLAY AND CONSTRUCT NEW 75mm ASPHALT OVERLAY
  - REMOVE EXISTING PAVEMENT AND CONSTRUCT NEW 150mm REINFORCED CONCRETE PAVEMENT c/w 50mm ASPHALTIC CONCRETE OVERLAY

**APEGM**  
 Certificate of Authorization  
 Earth Tech Canada Inc.  
 No. 730 Expiry: April 30, 2006

**METRIC**  
 WHOLE NUMBERS INDICATE MILLIMETRES  
 DECIMALIZED NUMBERS INDICATE METRES

EXISTING	LEGEND - PLAN	PROPOSED	EXISTING	LEGEND - PLAN	PROPOSED	EXISTING	LEGEND - PROFILE	PROPOSED
150 mm W.M.	WATERMAIN	150 mm W.M.	HYDRO	— x —	PROFILE	—	—	—
Hydrant	HYDRANT	Valve	M.T.S.	—	NORTH GUTTER	—	—	—
300mm L.D.S.	LAND DRAINAGE SEWER	300mm L.D.S.	CONCRETE	—	SOUTH GUTTER	—	—	—
250mm W.W.S.	WASTEWATER SEWER	250mm W.W.S.	ASPHALT	—	WEST PROPERTY LINE	—	—	—
Manhole	MANHOLE	Survey Bar	PROPERTY LINE	—	EAST PROPERTY LINE	—	—	—
Catch Basin	CATCH BASIN	Elevation	SURVEY BAR	—		—	—	—
Curb Inlet	CURB INLET	Tree	CONCRETE SIDEWALK	—		—	—	—
Junctions	JUNCTIONS	Sidewalk Ramp	FENCE	—		—	—	—
Culvert	CULVERT			—		—	—	—
Gas	GAS			—		—	—	—

**LOCATION APPROVED UNDERGROUND STRUCTURES**

SUPV. U/G STRUCTURES DATE COMMITTEE

**NOTE:**  
 LOCATION OF UNDERGROUND STRUCTURES AS SHOWN ARE BASED ON THE BEST INFORMATION AVAILABLE, BUT NO GUARANTEE IS GIVEN THAT ALL EXISTING UTILITIES ARE SHOWN OR THAT THE GIVEN LOCATIONS ARE EXACT. CONFIRMATION OF EXISTENCE AND EXACT LOCATION OF ALL SERVICES MUST BE OBTAINED FROM THE INDIVIDUAL UTILITIES BEFORE PROCEEDING WITH CONSTRUCTION.

NO.	REVISIONS	DATE	BY
0	ISSUED FOR TENDER	APR 10/06	BC
A	ISSUED FOR REVIEW	MAR/06	BC

**EARTH TECH**  
 Earth Tech (Canada) Inc. Winnipeg, Manitoba 204.477.5381

DESIGNED BY: RC CHECKED BY: TGS  
 DRAWN BY: RC APPROVED BY:  
 HOR. SCALE: 1:250  
 VERTICAL: 1:10  
 RELEASED FOR CONSTRUCTION BY:  
 2006/02/08

ENGINEER'S SEAL  
 PROVINCE OF MANITOBA  
 ORIGINAL SIGNED  
**T.G. SMITH**  
 APR 7/06  
 REGISTERED PROFESSIONAL ENGINEER

**THE CITY OF WINNIPEG**  
 PUBLIC WORKS DEPARTMENT  
 ENGINEERING DIVISION

**SIMCOE STREET**  
 ST. MATTHEWS AVENUE TO ELLICE AVENUE

PAVEMENT RECONSTRUCTION  
 PLAN/PROFILE  
 STA. 3+30 TO ELLICE AVENUE

CITY DRAWING NUMBER  
 SHEET 3 OF 3

CONSULTANT DRAWING NO. CT03