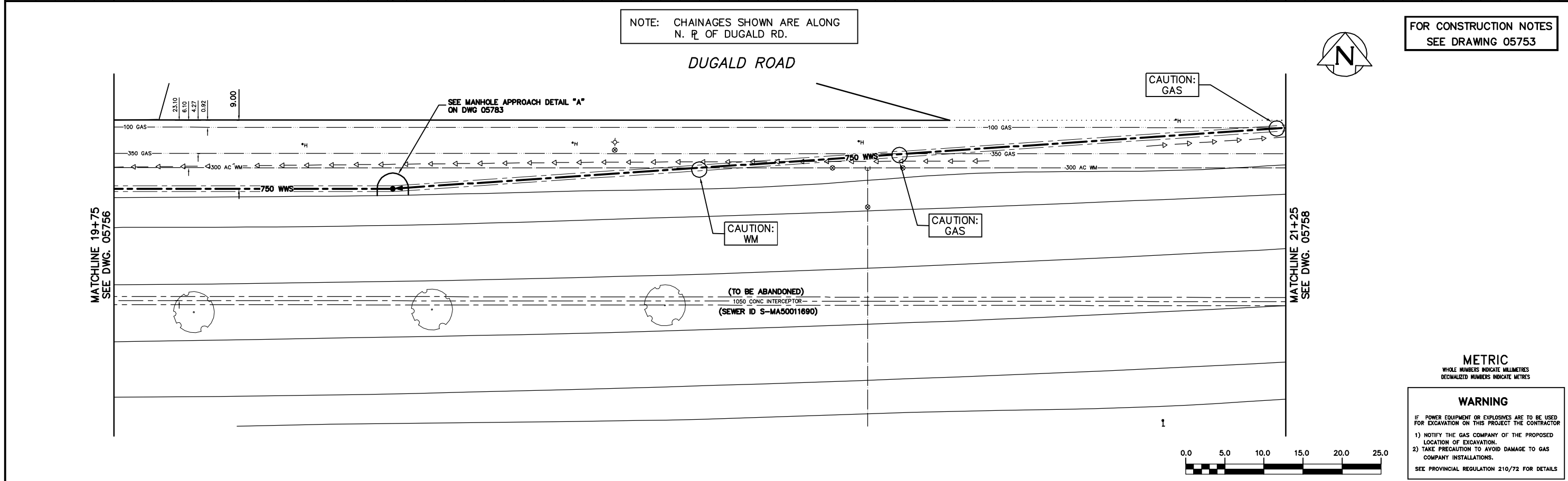


NOTE: CHAINAGES SHOWN ARE ALONG N. P. OF DUGALD RD.

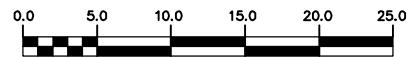
FOR CONSTRUCTION NOTES SEE DRAWING 05753

DUGALD ROAD



METRIC  
WHOLE NUMBERS INDICATE MILLIMETRES  
DECIMALIZED NUMBERS INDICATE METRES

**WARNING**  
IF POWER EQUIPMENT OR EXPLOSIVES ARE TO BE USED FOR EXCAVATION ON THIS PROJECT THE CONTRACTOR  
1) NOTIFY THE GAS COMPANY OF THE PROPOSED LOCATION OF EXCAVATION.  
2) TAKE PRECAUTION TO AVOID DAMAGE TO GAS COMPANY INSTALLATIONS.  
SEE PROVINCIAL REGULATION 210/72 FOR DETAILS



200 WM	WATERMAIN	200 WM	SL, HYDRO	150 WM	WATERMAIN	150 WM
⊕	HYDRANT	⊕	MTS	⊕	HYDRANT	⊕
⊙	VALVE	⊙	TRAFFIC SIGNALS	⊙	VALVE	⊙
525 LDS	LAND DRAINAGE SEWER	525 LDS	50 GAS	300 LDS	LAND DRAINAGE SEWER	300 LDS
375 WWS	WASTEWATER SEWER	375 WWS	50 GAS	250 WWS	WASTEWATER SEWER	250 WWS
○	MANHOLE	●	SURVEY BAR	⊕	PROFILE	⊕
□	CATCH BASIN	■	* * * * *	⊕	GROUND ABOVE PIPE	⊕
▽	CURB INLET	▽	POLE - HYDRO, MTS	⊕	⊕ DITCH (NORTH & WEST)	⊕
⊕	JUNCTIONS	⊕	CURB STOP	⊕	⊕ DITCH (SOUTH & EAST)	⊕
⊕	CULVERT	⊕	GUY ANCHOR	⊕	⊕ GUTTER (NORTH & WEST)	⊕
⊕	ANODE	⊕	LIGHT STANDARD	⊕	⊕ GUTTER (SOUTH & EAST)	⊕
⊕	EXISTING	⊕	TREE	⊕	LEGEND-PROFILE	⊕
⊕	LEGEND-PLAN	⊕	PROPOSED	⊕	PROPOSED	⊕

LOCATION APPROVED  
UNDERGROUND STRUCTURES

SUPV. U/G STRUCTURES COMMITTEE DATE

NOTE:  
LOCATION OF UNDERGROUND STRUCTURES AS SHOWN ARE BASED ON THE BEST INFORMATION AVAILABLE BUT NO GUARANTEE IS GIVEN THAT ALL EXISTING UTILITIES ARE SHOWN OR THAT THE GIVEN LOCATIONS ARE EXACT. CONFIRMATION OF EXISTENCE AND EXACT LOCATION OF ALL SERVICES MUST BE OBTAINED FROM THE INDIVIDUAL UTILITIES BEFORE PROCEEDING WITH CONSTRUCTION.

B.M. ELEV. FIELD BOOK #

POSTED TO LBS

NO. REVISIONS DATE BY

**CITY OF WINNIPEG**  
WATER AND WASTE  
ENGINEERING DIVISION

DESIGNED BY SC CHECKED BY TW/KZ

DRAWN BY CJH APPROVED BY KZ

HOR. SCALE 1:250  
VERTICAL 1:50

DATE 2006 02 16

ENGINEER'S SEAL

ORIGINAL SIGNED  
BY S.R.J.  
COURNOYER  
06/02/16

BID OPPORTUNITY: 13-2006  
FILENAME: Dugald\_INTERCEPTOR.dwg  
PLOT DATE: 2006 02 17

**THE CITY OF WINNIPEG**  
WATER AND WASTE DEPARTMENT

DUGALD SECONDARY  
SEWER REPLACEMENT  
DUGALD ROAD

496 E OF E R BOURNAIS DRIVE TO  
475 W OF W R PLESSIS ROAD

SHEET 6 OF 24  
CITY DRAWING NUMBER  
05757