

NOTE: CHAINAGES SHOWN ARE ALONG N. P. OF DUGALD RD.

DUGALD ROAD



SEWER SERVICE INFORMATION			
ADDRESS	SIZE	R. DIST	JUNCTION TIE
1665 DUGALD RD	COMMERCIAL	168.80 W 1ST MH E BOURNAIS	-
1673 DUGALD RD	COMMERCIAL	8.05 E OF WL	-
1687 DUGALD RD	COMMERCIAL	151.0 W 1ST MH E BOURNAIS	-
1687 DUGALD RD	COMMERCIAL	63.80 W 1ST MH E BOURNAIS	-

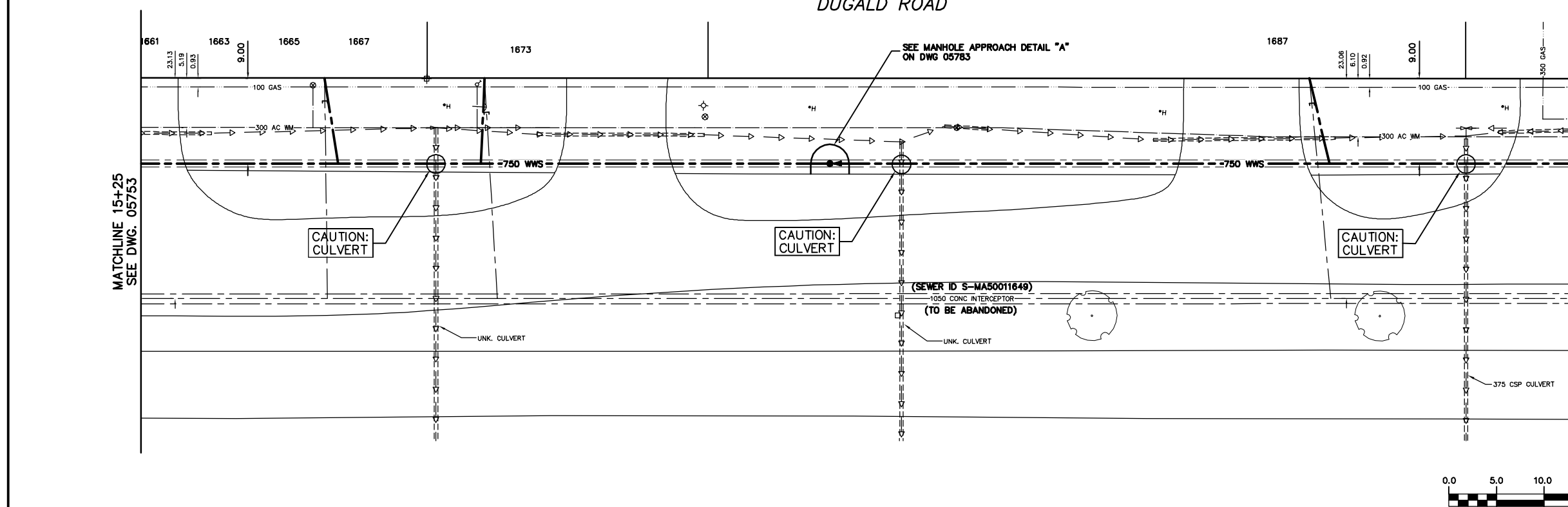
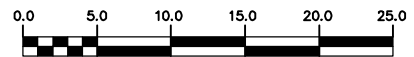
SEWER JUNCTION INFORMATION *			
SEWER ID S-MA50011649			
DISTANCE FROM MH ID S-MH50009398			
63.60 W	150P	NORTH	ON
151.00 W	150P	NORTH	1673 DUGALD
168.80 W	150P	TOP	ON

* INFORMATION FROM SEWER VIDEO INSPECTION

FOR CONSTRUCTION NOTES
SEE DRAWING 05753

METRIC
WHOLE NUMBERS INDICATE MILLIMETRES
DECIMALIZED NUMBERS INDICATE METRES

WARNING
IF POWER EQUIPMENT OR EXPLOSIVES ARE TO BE USED FOR EXCAVATION ON THIS PROJECT THE CONTRACTOR
1) NOTIFY THE GAS COMPANY OF THE PROPOSED LOCATION OF EXCAVATION.
2) TAKE PRECAUTION TO AVOID DAMAGE TO GAS COMPANY INSTALLATIONS.
SEE PROVINCIAL REGULATION 210/72 FOR DETAILS



200 WM	WATERMAIN	200 WM	SL, HYDRO	150 WM	WATERMAIN	150 WM
⊕	HYDRANT	⊕	MTS	⊕	HYDRANT	⊕
⊙	VALVE	⊙	TRAFFIC SIGNALS	⊙	VALVE	⊙
— 525 LDS —	LAND DRAINAGE SEWER	— 525 LDS —	GAS	— 50 GAS —	— 300 LDS —	LAND DRAINAGE SEWER
— 375 WWS —	WASTEWATER SEWER	— 375 WWS —	SURVEY BAR	— 250 WWS —	— 250 WWS —	WASTEWATER SEWER
○	MANHOLE	●	FENCE	⊕	⊕	PROFILE
□	CATCH BASIN	■	POLE - HYDRO, MTS	⊕	⊕	GROUND ABOVE PIPE
▽	CURB INLET	▽	CURB STOP	⊕	⊕	⊕ DITCH (NORTH & WEST)
⊕	JUNCTIONS	⊕	GUY ANCHOR	⊕	⊕	⊕ DITCH (SOUTH & EAST)
—	CULVERT	—	LIGHT STANDARD	⊕	⊕	⊕ GUTTER (NORTH & WEST)
⊕	ANODE	⊕	TREE	⊕	⊕	⊕ GUTTER (SOUTH & EAST)
—	EXISTING	—	LEGEND-PLAN	—	—	LEGEND-PROFILE
—	PROPOSED	—	PROPOSED	—	—	PROPOSED

LOCATION APPROVED UNDERGROUND STRUCTURES	
SUPV. U/G STRUCTURES COMMITTEE	DATE
NOTE: LOCATION OF UNDERGROUND STRUCTURES AS SHOWN ARE BASED ON THE BEST INFORMATION AVAILABLE BUT NO GUARANTEE IS GIVEN THAT THE GIVEN LOCATIONS ARE EXACT. CONFIRMATION OF EXISTENCE AND EXACT LOCATION OF ALL SERVICES MUST BE OBTAINED FROM THE INDIVIDUAL UTILITIES BEFORE PROCEEDING WITH CONSTRUCTION.	

CITY OF WINNIPEG WATER AND WASTE ENGINEERING DIVISION	
DESIGNED BY: SC	CHECKED BY: TW/KZ
DRAWN BY: CJH	APPROVED BY: KZ
HOR. SCALE: 1:250	RELEASED FOR CONSTRUCTION
VERTICAL SCALE: 1:50	DATE: 2006 02 16

ENGINEER'S SEAL
ORIGINAL SIGNED BY S.R.J. COURNOYER 06/02/16

THE CITY OF WINNIPEG
WATER AND WASTE DEPARTMENT

DUGALD SECONDARY SEWER REPLACEMENT
DUGALD ROAD
46 E OF E R BOURNAIS DRIVE TO 196 E OF E R BOURNAIS DRIVE

SHEET 3 OF 24
CITY DRAWING NUMBER 05754

NO.	REVISIONS	DATE	BY