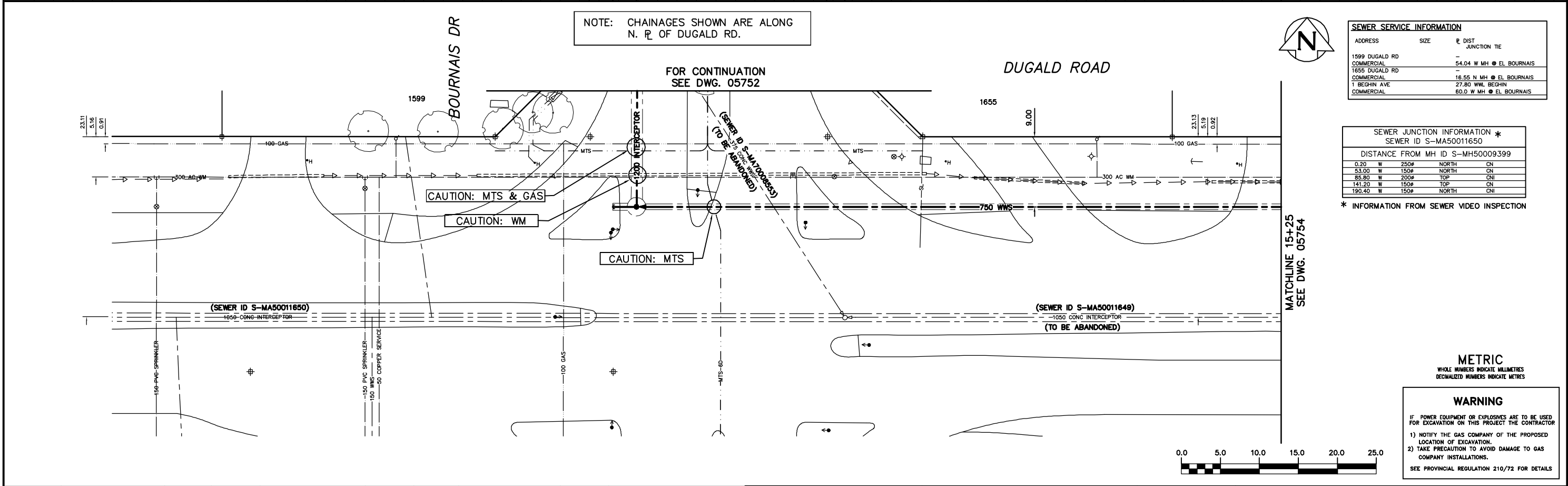


CONSTRUCTION NOTES:

1. ALL PIPE SHALL HAVE CLASS B - TYPE 2 BEDDING
2. INSTALL SEWER BY TRENCHLESS METHODS.
3. CONFIRM THE LOCATION OF ALL SEWER SERVICES.
4. BACKFILL UNDER PAVEMENT, IN SIDEWALKS, & WITHIN 1.0 OF PAVEMENT TO BE CLASS 3.
5. BACKFILL IN BOULEVARD TO BE CLASS 5.
6. RENEW SEWER SERVICES TO R.
7. INSTALL SEWER SERVICE RISERS TO ELEVATION WHERE MINIMUM SLOPE OF 1% IS MAINTAINED FOR ALL SERVICES.

NOTE: CHAINAGES SHOWN ARE ALONG N. R. OF DUGALD RD.



SEWER SERVICE INFORMATION			
ADDRESS	SIZE	R DIST	JUNCTION TIE
1599 DUGALD RD	COMMERCIAL	54.04 W MH	EL BOURNAIS
1655 DUGALD RD	COMMERCIAL	16.55 N MH	EL BOURNAIS
1 BOURNAIS AVE	COMMERCIAL	27.85 WML BEG/IN	EL BOURNAIS
		60.0 W MH	EL BOURNAIS

SEWER JUNCTION INFORMATION *			
SEWER ID S-MA50011650			
DISTANCE FROM MH ID S-MH50009399			
0.20 W	250#	NORTH	CN
53.00 W	150#	NORTH	CN
85.80 W	200#	TOP	CNI
141.20 W	150#	TOP	CN
190.40 W	150#	NORTH	CNI

* INFORMATION FROM SEWER VIDEO INSPECTION

METRIC
WHOLE NUMBERS INDICATE MILLIMETRES
DECIMALIZED NUMBERS INDICATE METRES

WARNING

IF POWER EQUIPMENT OR EXPLOSIVES ARE TO BE USED FOR EXCAVATION ON THIS PROJECT THE CONTRACTOR

- 1) NOTIFY THE GAS COMPANY OF THE PROPOSED LOCATION OF EXCAVATION.
- 2) TAKE PRECAUTION TO AVOID DAMAGE TO GAS COMPANY INSTALLATIONS.

SEE PROVINCIAL REGULATION 210/72 FOR DETAILS

200 WM	WATERMAIN	200 WM	SL, HYDRO	150 WM	WATERMAIN	150 WM
+	HYDRANT	+	MTS	+	HYDRANT	+
⊙	VALVE	⊙	TRAFFIC SIGNALS	⊙	VALVE	⊙
525 LDS	LAND DRAINAGE SEWER	525 LDS	50 GAS	300 LDS	LAND DRAINAGE SEWER	300 LDS
375 WWS	WASTEWATER SEWER	375 WWS	50 GAS	250 WWS	WASTEWATER SEWER	250 WWS
○	MANHOLE	●	* * * *	⊕	PROFILE	⊕
□	CATCH BASIN	■	* * H * T	⊕	GROUND ABOVE PIPE	⊕
▽	CURB INLET	▽	POLE - HYDRO, MTS	⊕	⊕ DITCH (NORTH & WEST)	⊕
⊕	JUNCTIONS	⊕	CURB STOP	⊕	⊕ DITCH (SOUTH & EAST)	⊕
⊕	CULVERT	⊕	GUY ANCHOR	⊕	⊕ GUTTER (NORTH & WEST)	⊕
⊕	ANODE	⊕	LIGHT STANDARD	⊕	⊕ GUTTER (SOUTH & EAST)	⊕
⊕		⊕	TREE	⊕		⊕
EXISTING	LEGEND-PLAN	PROPOSED	EXISTING	LEGEND-PLAN	PROPOSED	EXISTING
				LEGEND-PROFILE	PROPOSED	

LOCATION APPROVED UNDERGROUND STRUCTURES

SUPV. U/G STRUCTURES COMMITTEE DATE

NOTE:
LOCATION OF UNDERGROUND STRUCTURES AS SHOWN ARE BASED ON THE BEST INFORMATION AVAILABLE BUT NO GUARANTEE IS GIVEN THAT ALL EXISTING UTILITIES ARE SHOWN OR THAT THE GIVEN LOCATIONS ARE EXACT. CONFIRMATION OF EXISTENCE AND EXACT LOCATION OF ALL SERVICES MUST BE OBTAINED FROM THE INDIVIDUAL UTILITIES BEFORE PROCEEDING WITH CONSTRUCTION.

NO.	REVISIONS	DATE	BY

CITY OF WINNIPEG
WATER AND WASTE
ENGINEERING DIVISION

DESIGNED BY: SC
CHECKED BY: TW/KZ

DRAWN BY: CJH
APPROVED BY: KZ

HOR. SCALE: 1:250
VERTICAL: 1:50

DATE: 2006 02 16

ENGINEER'S SEAL

ORIGINAL SIGNED BY S.R.J. COURNOYER 06/02/16

FILE NAME: Dugald_Interceptor.dwg
PLOT DATE: 2006 02 17

THE CITY OF WINNIPEG
WATER AND WASTE DEPARTMENT

DUGALD SECONDARY SEWER REPLACEMENT
DUGALD ROAD
BOURNAIS DRIVE TO
46 E OF E R BOURNAIS DRIVE

SHEET 2 OF 24
CITY DRAWING NUMBER 05753