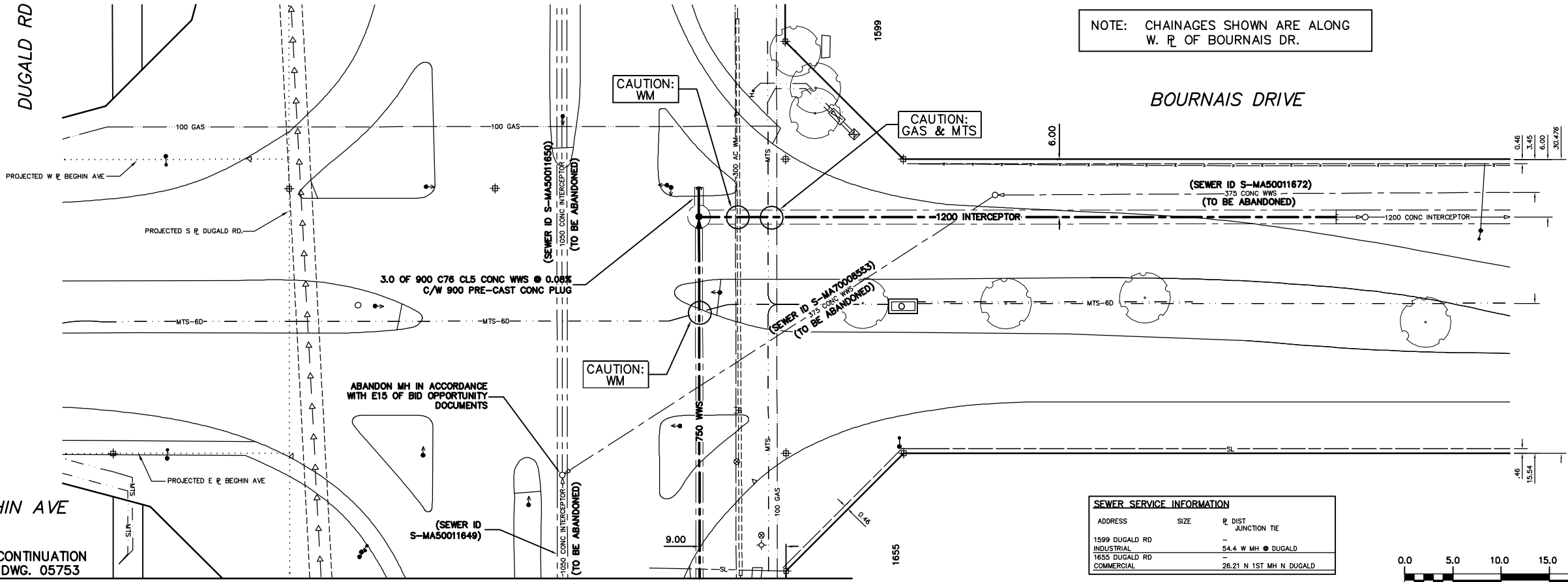


**CONSTRUCTION NOTES:**

1. ALL PIPE SHALL HAVE CLASS B - TYPE 2 BEDDING
2. INSTALL SEWER BY TRENCHLESS METHODS.
3. CONFIRM THE LOCATION OF ALL SEWER SERVICES.
4. BACKFILL UNDER PAVEMENT, IN SIDEWALKS, & WITHIN 1.0 OF PAVEMENT TO BE CLASS 3.
5. BACKFILL IN BOULEVARD TO BE CLASS 5.
6. RENEW SEWER SERVICES TO R.
7. INSTALL SEWER SERVICE RISERS TO ELEVATION WHERE MINIMUM SLOPE OF 1% IS MAINTAINED FOR ALL SERVICES.



SEWER SERVICE INFORMATION		
ADDRESS	SIZE	R DIST JUNCTION TIE
1599 DUGALD RD	-	-
INDUSTRIAL	54.4 W MH @ DUGALD	-
1655 DUGALD RD	-	-
COMMERCIAL	26.21 N 1ST MH N DUGALD	-



**WARNING**

IF POWER EQUIPMENT OR EXPLOSIVES ARE TO BE USED FOR EXCAVATION ON THIS PROJECT THE CONTRACTOR

- 1) NOTIFY THE GAS COMPANY OF THE PROPOSED LOCATION OF EXCAVATION.
- 2) TAKE PRECAUTION TO AVOID DAMAGE TO GAS COMPANY INSTALLATIONS.

SEE PROVINCIAL REGULATION 210/72 FOR DETAILS

200 WM		200 WM		SL, HYDRO		150 WM		150 WM	
+	WATERMAIN	+	WATERMAIN	---	HYDRO	---	WATERMAIN	---	WATERMAIN
+	HYDRANT	+	HYDRANT	---	MTS	---	HYDRANT	---	HYDRANT
+	VALVE	+	VALVE	---	TRAFFIC SIGNALS	---	VALVE	---	VALVE
525 LDS	LAND DRAINAGE SEWER	525 LDS	50 GAS	---	GAS	---	50 GAS	---	300 LDS
375 WWS	WASTEWATER SEWER	375 WWS	300 LDS	---	300 LDS	---	LAND DRAINAGE SEWER	---	300 LDS
○	MANHOLE	●	375 WWS	---	250 WWS	---	WASTEWATER SEWER	---	250 WWS
□	CATCH BASIN	■	* * * *	---	FENCE	---	PROFILE OR PAVEMENT	---	GROUND ABOVE PIPE
▽	CURB INLET	▽	* * H * T	---	POLE - HYDRO, MTS	---	☉	---	☉
+	JUNCTIONS	+	☉	---	CURB STOP	---	☉	---	☉
+	CULVERT	+	☉	---	GUY ANCHOR	---	☉	---	☉
+	ANODE	+	☉	---	LIGHT STANDARD	---	☉	---	☉
+	EXISTING	+	PROPOSED	---	LEGEND-PLAN	---	PROPOSED	---	EXISTING
+	LEGEND-PLAN	+	PROPOSED	---	LEGEND-PLAN	---	PROPOSED	---	EXISTING
+	LEGEND-PROFILE	+	PROPOSED	---	LEGEND-PROFILE	---	PROPOSED	---	EXISTING

LOCATION APPROVED UNDERGROUND STRUCTURES	
SUPV. U/G STRUCTURES COMMITTEE	DATE
NOTE:	
LOCATION OF UNDERGROUND STRUCTURES AS SHOWN ARE BASED ON THE BEST INFORMATION AVAILABLE BUT NO GUARANTEE IS GIVEN THAT ALL EXISTING UTILITIES ARE SHOWN OR THAT THE GIVEN LOCATIONS ARE EXACT. CONFIRMATION OF EXISTENCE AND EXACT LOCATION OF ALL SERVICES MUST BE OBTAINED FROM THE INDIVIDUAL UTILITIES BEFORE PROCEEDING WITH CONSTRUCTION.	
B.M. ELEV.	FIELD BOOK #:
POSTED TO LBS	
NO. REVISIONS	DATE BY

**CITY OF WINNIPEG WATER AND WASTE ENGINEERING DIVISION**

DESIGNED BY: SC  
CHECKED BY: TW/KZ

DRAWN BY: CJH  
APPROVED BY: KZ

HOR. SCALE: 1:250  
VERTICAL: 1:50

RELEASED FOR CONSTRUCTION

DATE: 2006 02 16

ENGINEER'S SEAL

ORIGINAL SIGNED BY S.R.J. COURNOYER 06/02/16

FILENAME: Dugald Interceptor.dwg  
PLOT DATE: 2006 02 17

**THE CITY OF WINNIPEG WATER AND WASTE DEPARTMENT**

DUGALD SECONDARY SEWER REPLACEMENT BOURNAIS DRIVE 75 N OF N<sup>R</sup> DUGALD ROAD TO DUGALD ROAD

SHEET 1 OF 24  
CITY DRAWING NUMBER 05752