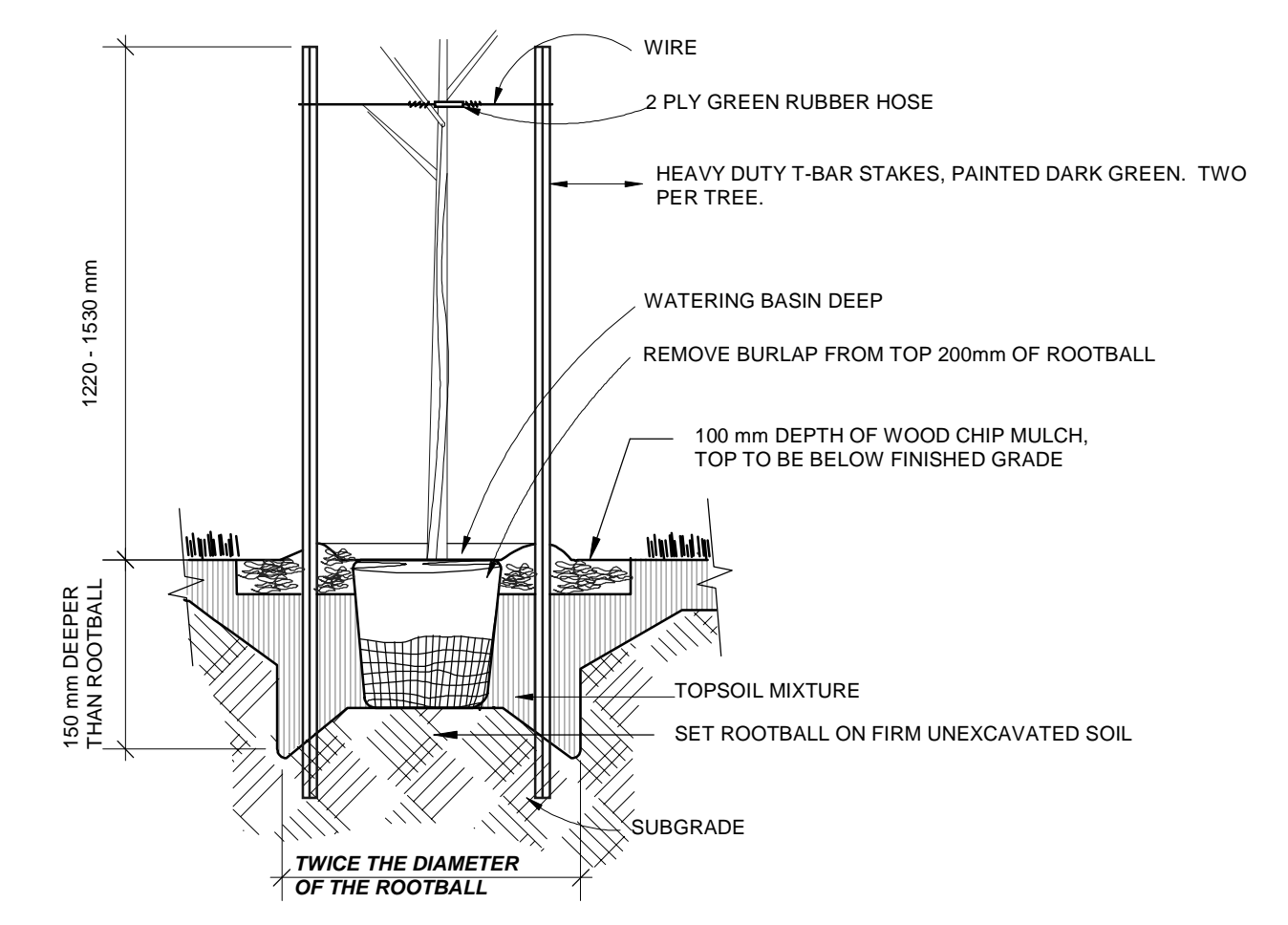
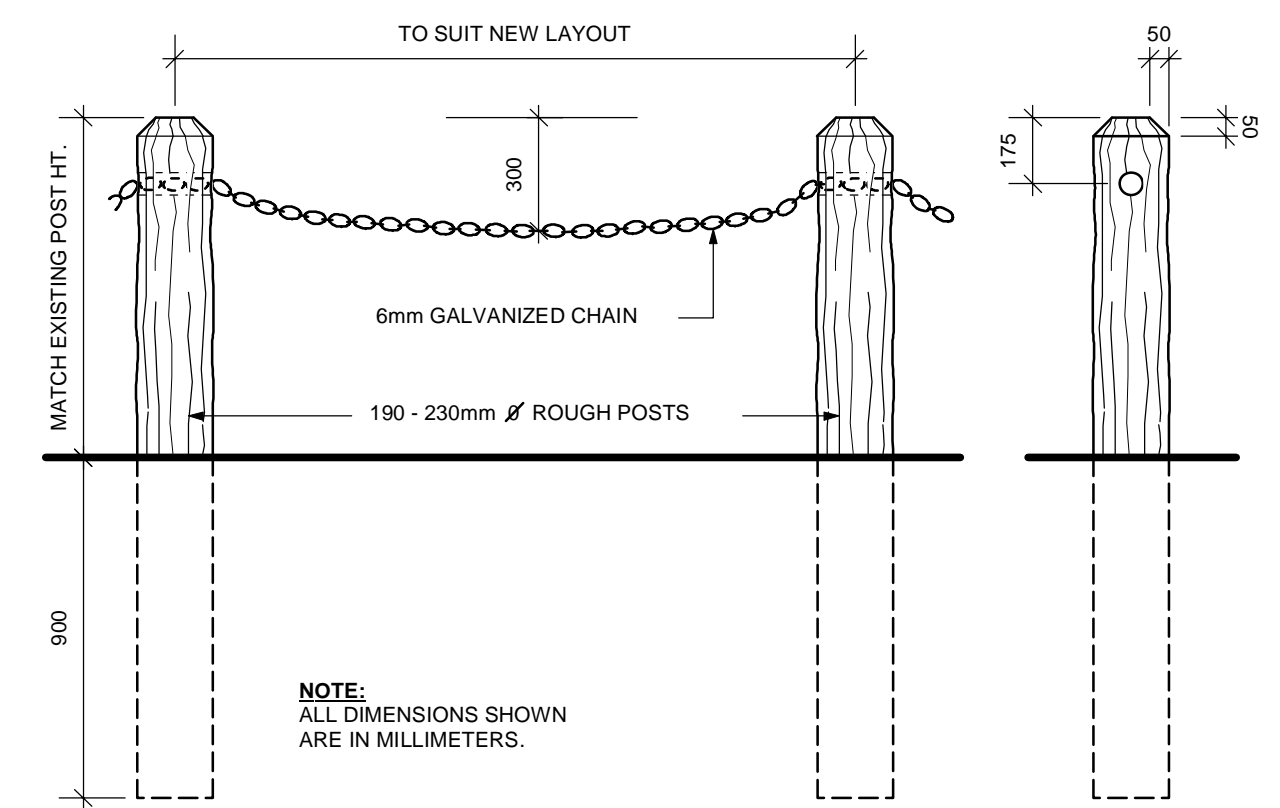
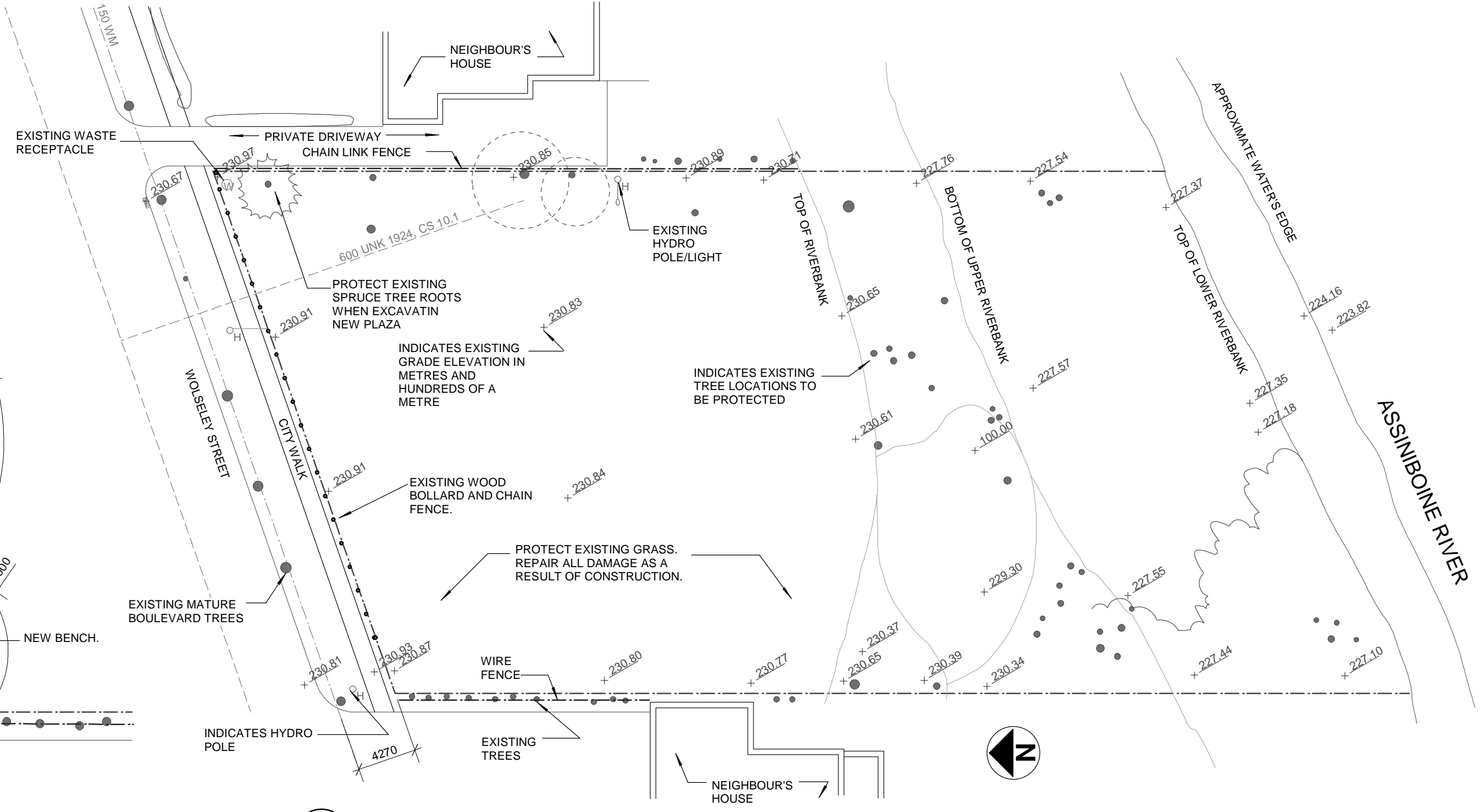
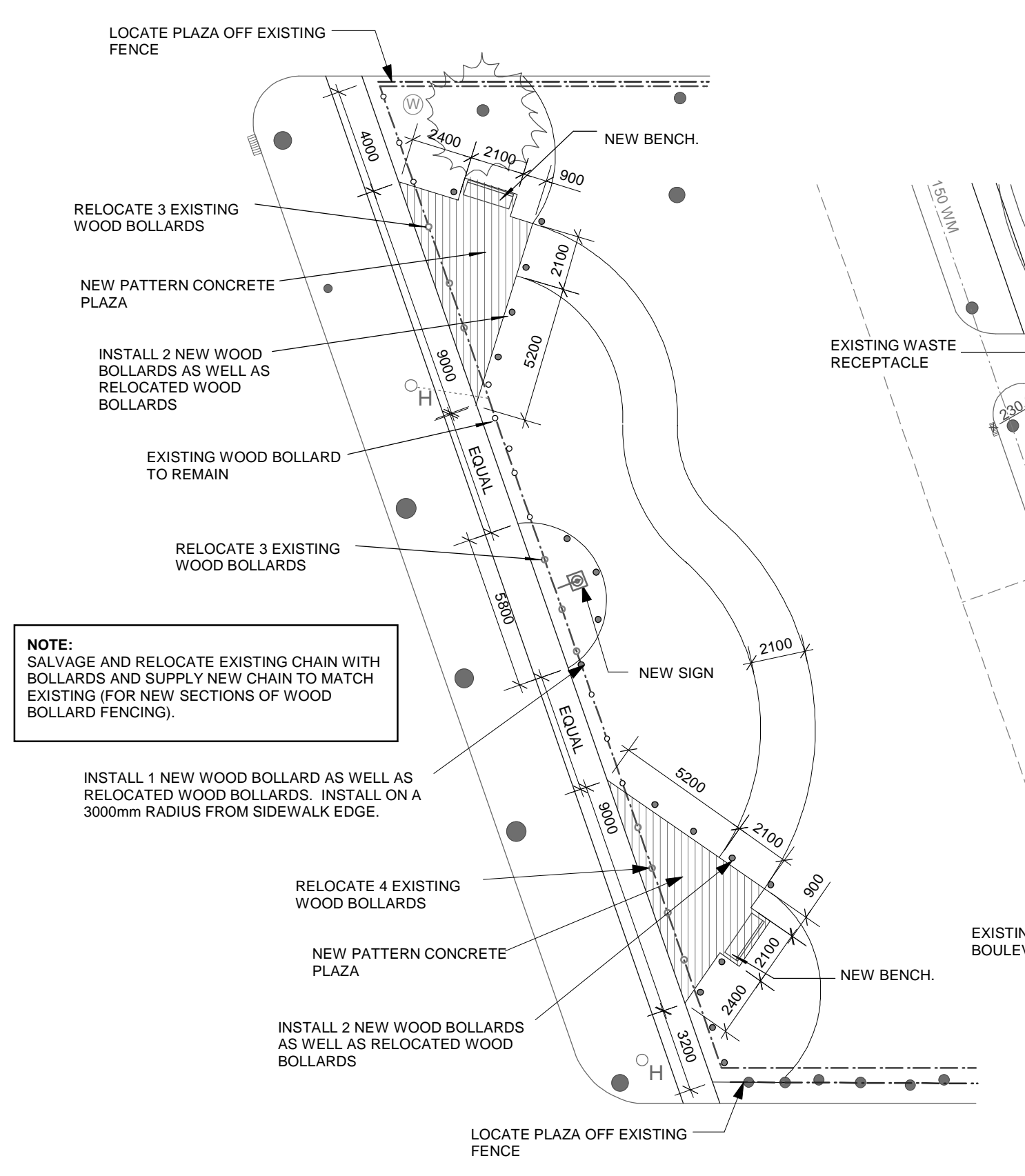
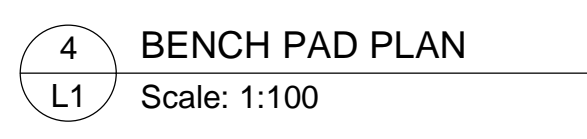
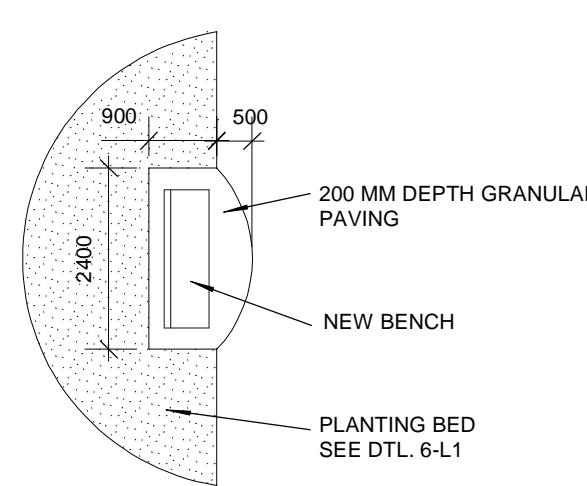
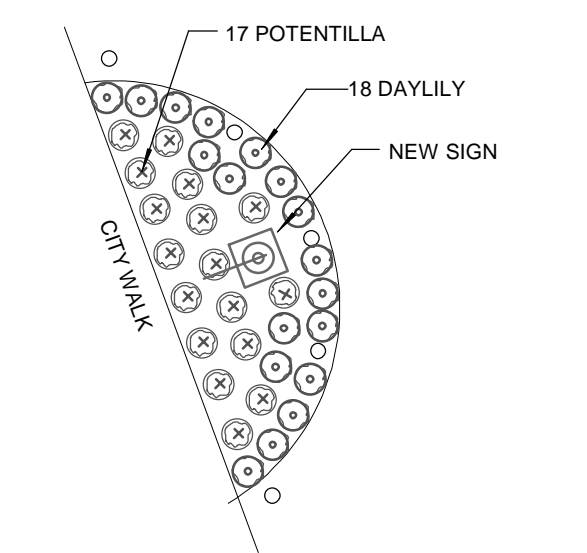
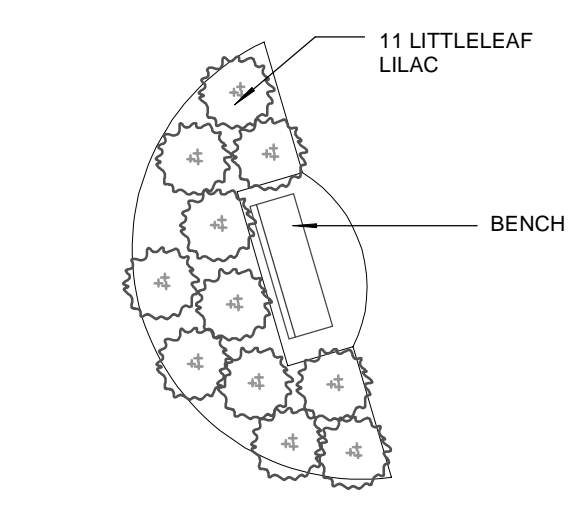
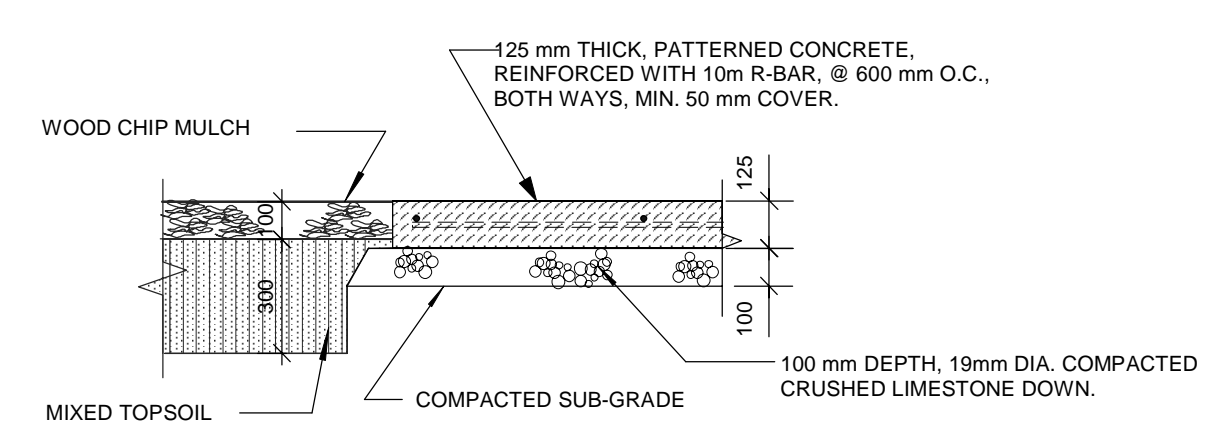


Qty	Botanical Name	Common Name	Size / Remarks - NOTE: ALL TREES TO BE SPECIMEN QUALITY.
2	<i>Picea pungens</i>	COLORADO SPRUCE	2.4 METRE HT. SPECIMEN QUALITY, MIN. 950mm ROOTBALL, 2 STAKES.
1	<i>Picea pungens</i>	COLORADO SPRUCE	3.0 METRE HT. SPECIMEN QUALITY, MIN. 1100mm ROOTBALL, 2 STAKES.
6	<i>Tilia americana</i>	AMERICAN BASSWOOD	MIN. 65mm CALIPER, 3000mm HT. WELL BRANCHED HEAD ABOVE 1200mm HT. MIN. 750mm ROOTBALL, 2 STAKES.
11	<i>Syringa Palibiana</i>	LITTLELEAF LILAC	MIN. 10 STEMS, EACH STEM TO BE MIN. 610mm HT. CONTAINER.
17	<i>Potentilla fruticosa 'Gold Drop'</i>	GOLD DROP POTENTILLA	MIN. 6 STEMS, EACH STEM TO BE MIN. 300mm HT. CONTAINER.
16	<i>hermocalis</i>	DAYLILY	MIXED COLOURS, MIN. 4 VARIETIES, ZONE 3 OR LESS, 2 YEAR OLD PLANTS, RANDOMLY MIX COLOURS.

- GENERAL NOTES:**
- All sod for repairs shall conform with CW.3510 & 3540 and all sod shall be installed over a minimum 100 mm depth of screened topsoil. Topsoil shall not contain more than 30% peat.
 - All shrub beds shall contain a minimum 300 mm depth of mixed topsoil, 4 way mix. Cover all shrub beds with a 100 mm depth of wood chip mulch.



- NOTE:**
- ACO PRESSURE TREATED PINE, FREE OF BARK, SOLID CORE, ROUGH NOT TURNED
 - SECURE CHAIN TO EACH POST WITH TWO ONLY 90mm GALV. NAILS TO PREVENT CHAIN SLIPPING. DRAPE CHAIN AS INDICATED.
 - ALL POSTS THOROUGHLY BACKFILLED WITH 6mm DIAMETER CRUSHED LINEDSTONE TAMPED AND MOUNDED APPROX. 100mm AT EACH POST FOR FUTURE SETTLING.
 - FENCE POSTS ARE TO FOLLOW THE NATURAL CONTOUR OF THE LAND EXCEPT FOR SMALL UNDULATIONS WHICH WOULD TEND TO REDUCE THE AESTHETIC APPEARANCE OF THE FINISHED PRODUCT.



7 L1

RELEASED FOR CONSTRUCTION

MANAGER PARKS & OPEN SPACE DIVISION

ISSUED FOR TENDER APRIL 4, 2006

PROJECT TITLE	NO.	REVISIONS	BY	DATE
GREENWOOD PARK 1270 Wolseley Avenue				
KEN RECH LANDSCAPE ARCHITECTS INC. 1480 Wellington Crescent Winnipeg Manitoba Fax 489-6852 R3N 0B3 Tel(204) 489-6616				
DRAWING TITLE	DRAWN BY	SCALE	SHEET NO.	
SITE PLANS AND DETAILS	K. RECH	AS NOTED	L1	
	PRINT DATE	DATE		
	APRIL 4/06	JULY 15/05		
	FILE NO.	REVISION		
	04-01-A			

