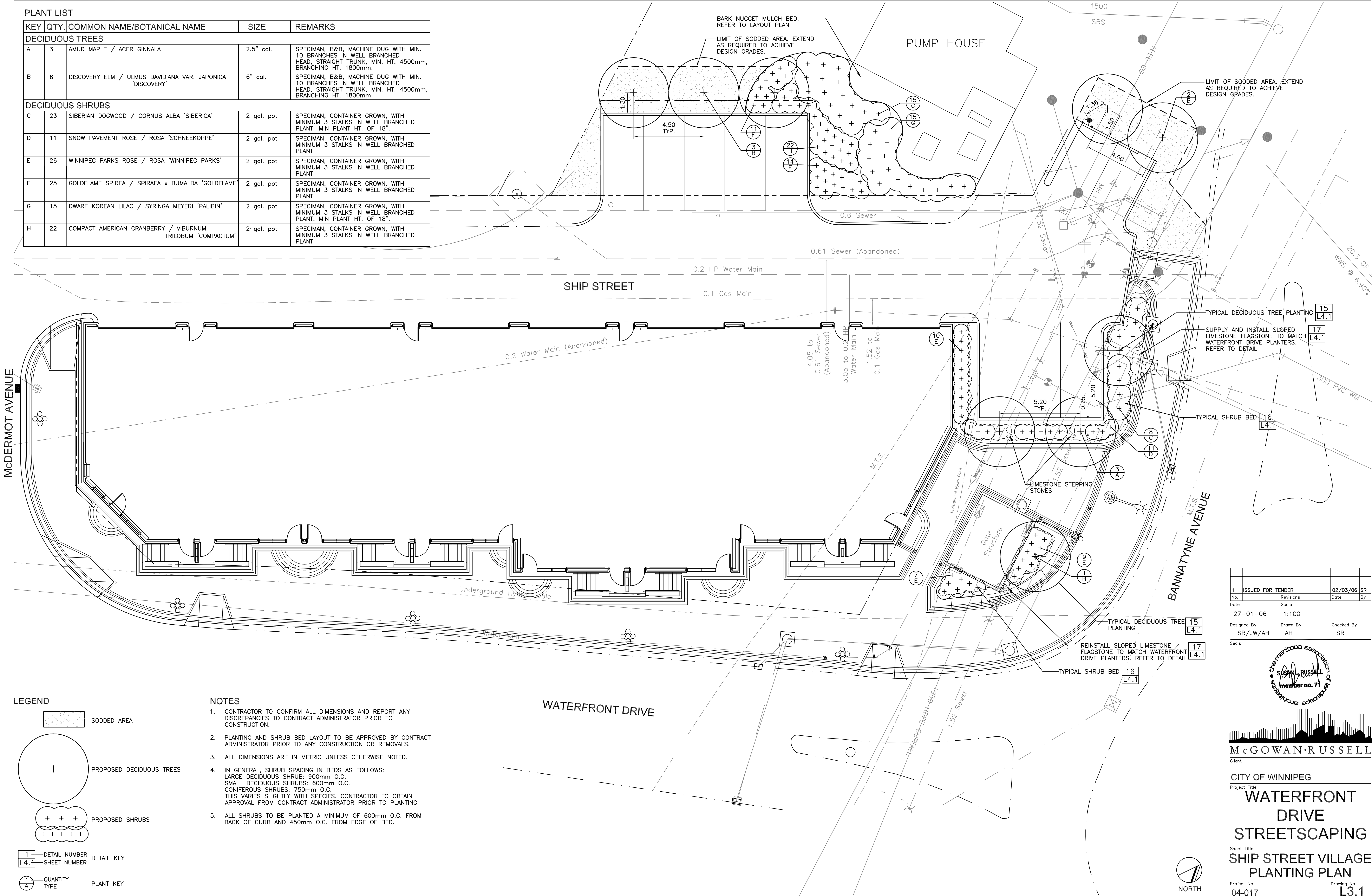


PLANT LIST

KEY	QTY.	COMMON NAME/BOTANICAL NAME	SIZE	REMARKS
DECIDUOUS TREES				
A	3	AMUR MAPLE / ACER GINNALA	2.5" cal.	SPECIMAN, B&B, MACHINE DUG WITH MIN. 10 BRANCHES IN WELL BRANCHED HEAD, STRAIGHT TRUNK, MIN. HT. 4500mm, BRANCHING HT. 1800mm.
B	6	DISCOVERY ELM / ULMUS DAVIDIANA VAR. JAPONICA 'DISCOVERY'	6" cal.	SPECIMAN, B&B, MACHINE DUG WITH MIN. 10 BRANCHES IN WELL BRANCHED HEAD, STRAIGHT TRUNK, MIN. HT. 4500mm, BRANCHING HT. 1800mm.
DECIDUOUS SHRUBS				
C	23	SIBERIAN DOGWOOD / CORNUS ALBA 'SIBERICA'	2 gal. pot	SPECIMAN, CONTAINER GROWN, WITH MINIMUM 3 STALKS IN WELL BRANCHED PLANT. MIN PLANT HT. OF 18".
D	11	SNOW PAVEMENT ROSE / ROSA 'SCHNEEKOPPE'	2 gal. pot	SPECIMAN, CONTAINER GROWN, WITH MINIMUM 3 STALKS IN WELL BRANCHED PLANT.
E	26	WINNIPEG PARKS ROSE / ROSA 'WINNIPEG PARKS'	2 gal. pot	SPECIMAN, CONTAINER GROWN, WITH MINIMUM 3 STALKS IN WELL BRANCHED PLANT.
F	25	GOLDFLAME SPIREA / SPIRAEA x BUMALDA 'GOLDFLAME'	2 gal. pot	SPECIMAN, CONTAINER GROWN, WITH MINIMUM 3 STALKS IN WELL BRANCHED PLANT.
G	15	DWARF KOREAN LILAC / SYRINGA MEYERI 'PALIBIN'	2 gal. pot	SPECIMAN, CONTAINER GROWN, WITH MINIMUM 3 STALKS IN WELL BRANCHED PLANT. MIN PLANT HT. OF 18".
H	22	COMPACT AMERICAN CRANBERRY / VIBURNUM TRILOBUM 'COMPACTUM'	2 gal. pot	SPECIMAN, CONTAINER GROWN, WITH MINIMUM 3 STALKS IN WELL BRANCHED PLANT.



LEGEND

[Stippled Area] SODDED AREA

[Circle with +] PROPOSED DECIDUOUS TREES

[Group of + symbols] PROPOSED SHRUBS

[1] [L4.1] DETAIL NUMBER SHEET NUMBER DETAIL KEY

[A] [7] QUANTITY TYPE PLANT KEY

- NOTES**
- CONTRACTOR TO CONFIRM ALL DIMENSIONS AND REPORT ANY DISCREPANCIES TO CONTRACT ADMINISTRATOR PRIOR TO CONSTRUCTION.
 - PLANTING AND SHRUB BED LAYOUT TO BE APPROVED BY CONTRACT ADMINISTRATOR PRIOR TO ANY CONSTRUCTION OR REMOVALS.
 - ALL DIMENSIONS ARE IN METRIC UNLESS OTHERWISE NOTED.
 - IN GENERAL, SHRUB SPACING IN BEDS AS FOLLOWS:
LARGE DECIDUOUS SHRUB: 900mm O.C.
SMALL DECIDUOUS SHRUBS: 600mm O.C.
CONIFEROUS SHRUBS: 750mm O.C.
THIS VARIES SLIGHTLY WITH SPECIES. CONTRACTOR TO OBTAIN APPROVAL FROM CONTRACT ADMINISTRATOR PRIOR TO PLANTING
 - ALL SHRUBS TO BE PLANTED A MINIMUM OF 600mm O.C. FROM BACK OF CURB AND 450mm O.C. FROM EDGE OF BED.

1	ISSUED FOR TENDER	02/03/06	SR
No.	Revisions	Date	By
Date	Scale		
27-01-06	1:100		
Designed By	Drawn By	Checked By	
SR/JW/AH	AH	SR	

Seals

Susan Russell
member no. 71

McGOWAN RUSSELL
Client

CITY OF WINNIPEG
Project Title

WATERFRONT DRIVE STREETSCAPING
Sheet Title

SHIP STREET VILLAGE PLANTING PLAN
Project No. 04-017 Drawing No. L3.1