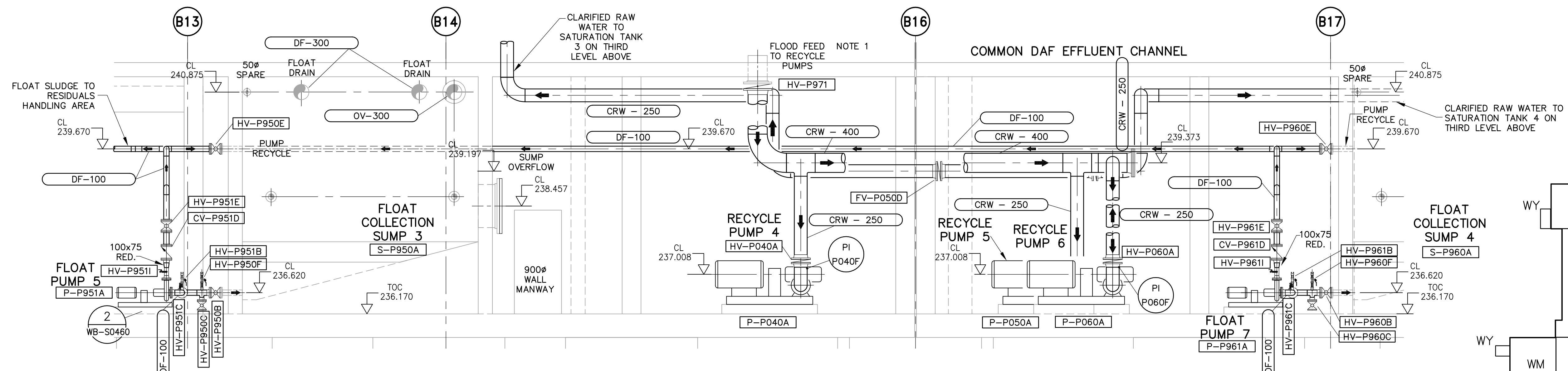
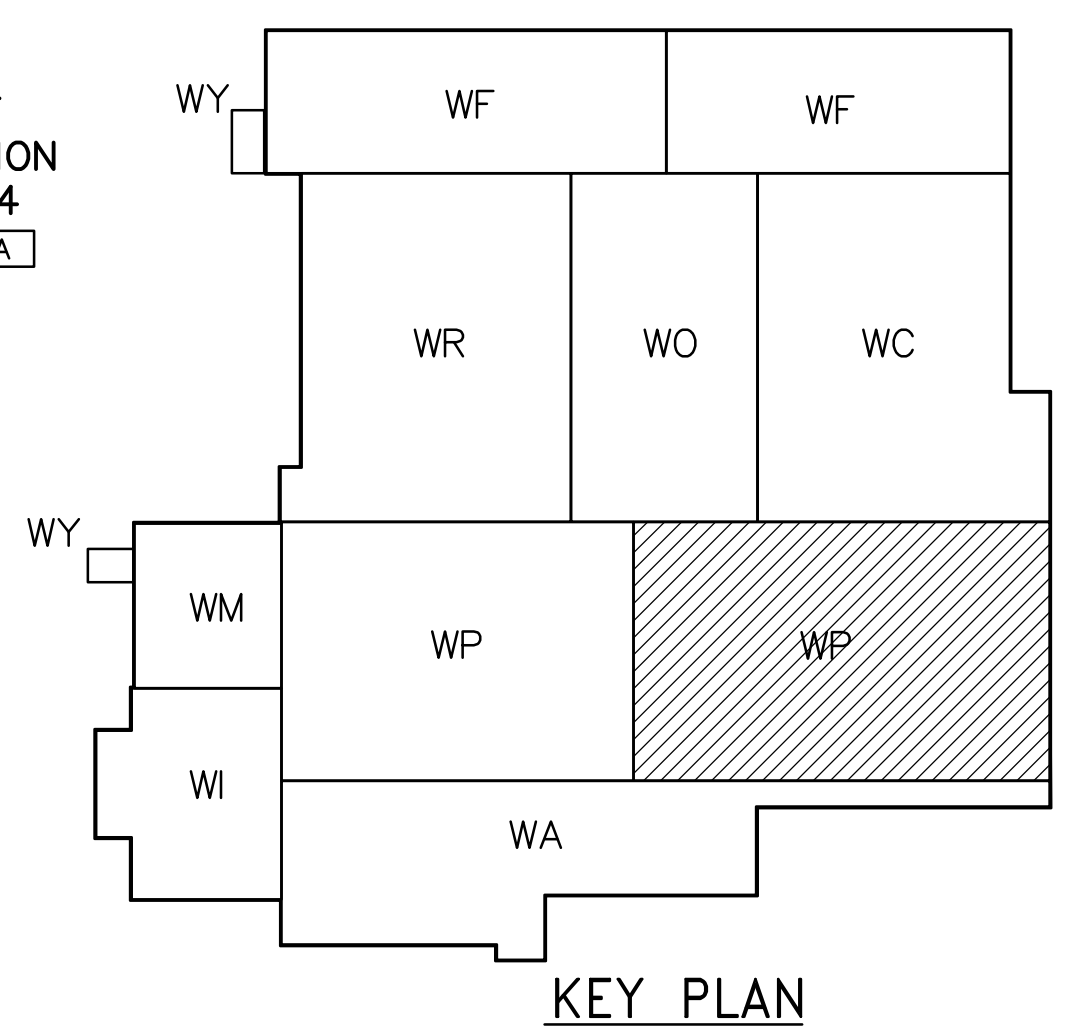


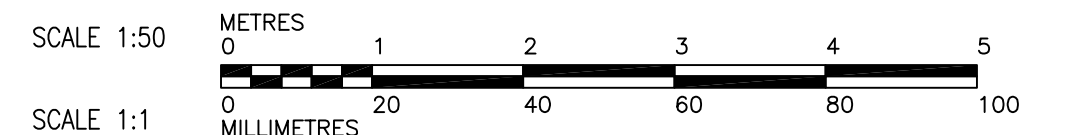
12 PLAN - FLOAT TRANSFER PUMPS 5-8, RECYCLE PUMPS 4-6
WP-M0115 1:50



E SECTION - FLOAT TRANSFER PUMPS, RECYCLE PUMPS 4-6
WP-M0110 1:50



KEY PLAN



NOTES:
 1. EXTEND 400mm FEED LINE 150mm ABOVE CHANNEL FLOOR. TYPICAL OF 2 FEED LINES.
 2. FOR ADDITIONAL INFORMATION ON PIPE EMBEDS, REFER TO SERIES WP-M9000 DRAWINGS.
 3. PROVIDE FLEXIBLE COUPLINGS ON THE SUCTION AND DISCHARGE OF ALL PROCESS PUMPS.

APECA
 Certificate of Authorization
 Earth Tech Canada Inc.
 No. 730 Expiry: April 30, 2006

B.M. ELEV.	NO.	REVISIONS	DATE	BY
	00	ISSUED FOR TENDER	06/03/29	PL

CH2MHILL Frederickson Cooper ARCHITECTS		EarthTech A Tyco International Ltd. Company	
DESIGNED BY: KAS	CHECKED BY: SMB	APPROVED BY: AHL	RELEASED FOR CONSTRUCTION BY: R. SOROKOWSKI
DRAWN BY: P.L./LPT/LC	SCALE: 1:50	DATE: 2005/10/19	DATE: 2006/03/29

ENGINEER'S SEAL
 ORIGINAL SIGNED BY: S.M. BREESE
 DATE: 2006/03/29
 CONSULTANT DRAWING NO. WP-M0210

THE CITY OF WINNIPEG
 WATER AND WASTE DEPARTMENT
 ENGINEERING DIVISION

WATER TREATMENT PLANT
 FLOCCULATION AND DAF
 MECHANICAL AND ELECTRICAL

PROCESS MECHANICAL
 FLOAT AND RECYCLE PUMPS

CITY FILE NUMBER
 SHEET OF
 CITY DRAWING NUMBER
 1-0601P-A-M0210-001-000