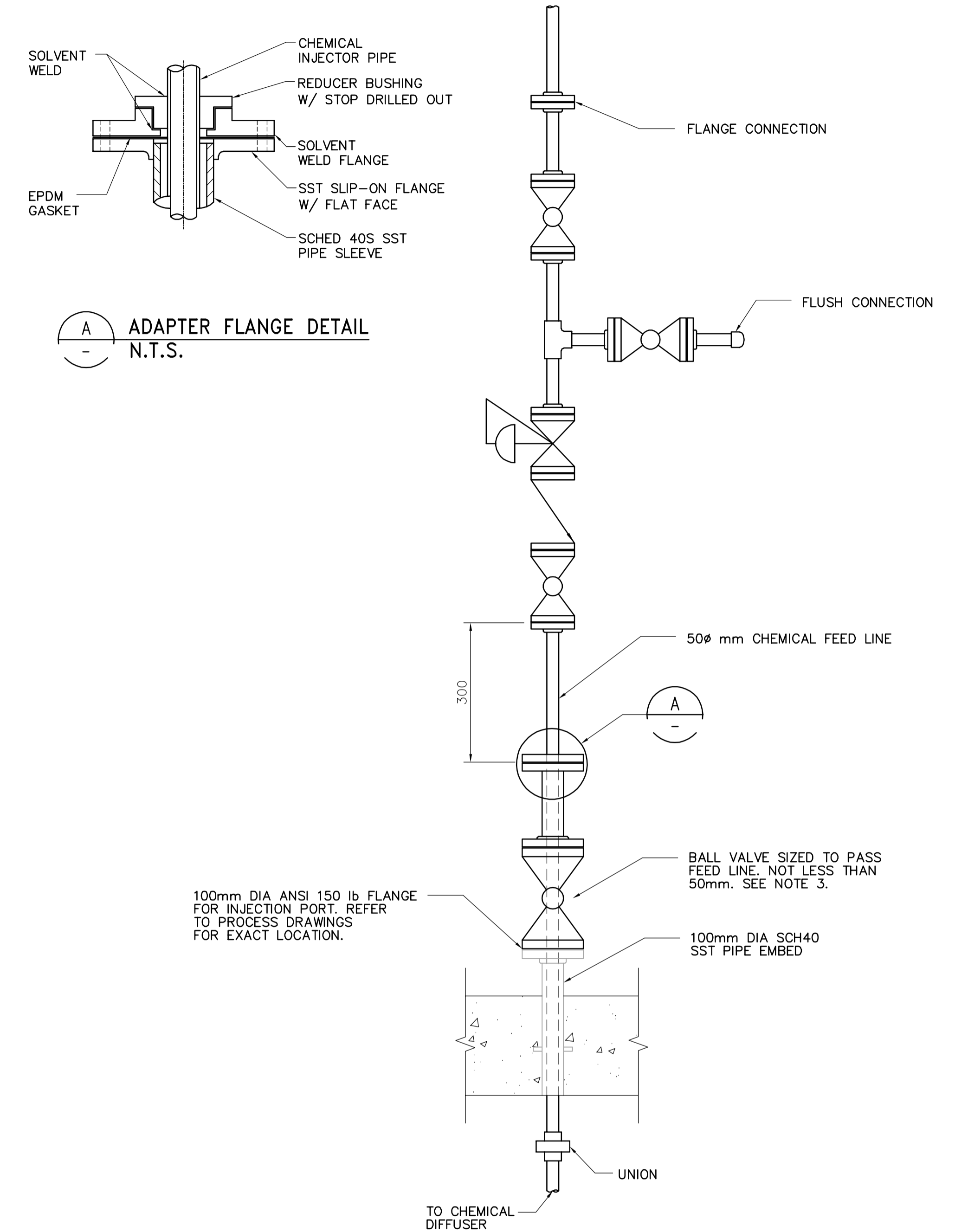


A ADAPTER FLANGE DETAIL
N.T.S.

NOTES:

1. VALVE SIZE, TYPE AND MATERIAL TO MATCH FEED LINE SIZE AND TYPE SPECIFIED FOR SERVICE.
2. CONTRACTOR TO COORDINATE FIELD MEASURE BEFORE FABRICATION. PROVIDE SHOP DRAWINGS.
3. BALL VALVE SIZE BASED ON CHEMICAL LINE DIA + 50mm (E.G. CHEMICAL LINE SIZE 50mm: BALL VALVE TO BE 100mm)
4. ALL CAUSTIC PIPING AND FITTINGS SHALL BE RATED FOR 100° CELSIUS.

9 CAUSTIC DIFFUSER BUSHING DETAIL
N.T.S.



A ADAPTER FLANGE DETAIL
N.T.S.

NOTES:

1. VALVE SIZE, TYPE AND MATERIAL TO MATCH FEED LINE SIZE AND TYPE SPECIFIED FOR SERVICE.
2. CONTRACTOR TO COORDINATE FIELD MEASURE BEFORE FABRICATION. PROVIDE SHOP DRAWINGS.
3. BALL VALVE SIZE BASED ON CHEMICAL LINE DIA + 50mm (E.G. CHEMICAL LINE SIZE 50mm: BALL VALVE TO BE 100mm)

10 AMMONIA DIFFUSER BUSHING DETAIL
N.T.S.

<p>APEGH Certificate of Authorization CH2M HILL Canada Ltd. No. 1441 Expiry: April 30, 2006</p>	B.M. ELEV.	<p>Frederickson Cooper ARCHITECTS</p>	<p>EarthTech A Tyco International Ltd. Company</p>	ENGINEER'S SEAL	<p>THE CITY OF WINNIPEG WATER AND WASTE DEPARTMENT ENGINEERING DIVISION</p>		
				DESIGNED BY: KS		CHECKED BY: NN	ORIGINAL SIGNED BY: J.W. SINCLAIR
				DRAWN BY: YFS		APPROVED BY: AHL	2006/03/29
				SCALE: NONE		RELEASED FOR CONSTRUCTION BY: R. SOROKOWSKI	CONSULTANT DRAWING NO. WC-M0454
	00 ISSUED FOR TENDER 06/03/29 KS	DATE: 2006/01/18	DATE: 2006/03/29		<p>WATER TREATMENT PLANT CHEMICAL FEED SYSTEMS MECHANICAL AND ELECTRICAL</p> <p>PROCESS MECHANICAL CHEMICAL AREA DETAILS</p>		
	NO. REVISIONS	DATE	BY		<p>CITY FILE NUMBER</p> <p>SHEET OF</p> <p>CITY DRAWING NUMBER</p> <p>1-0601C-A-M0454-001-000</p>		