

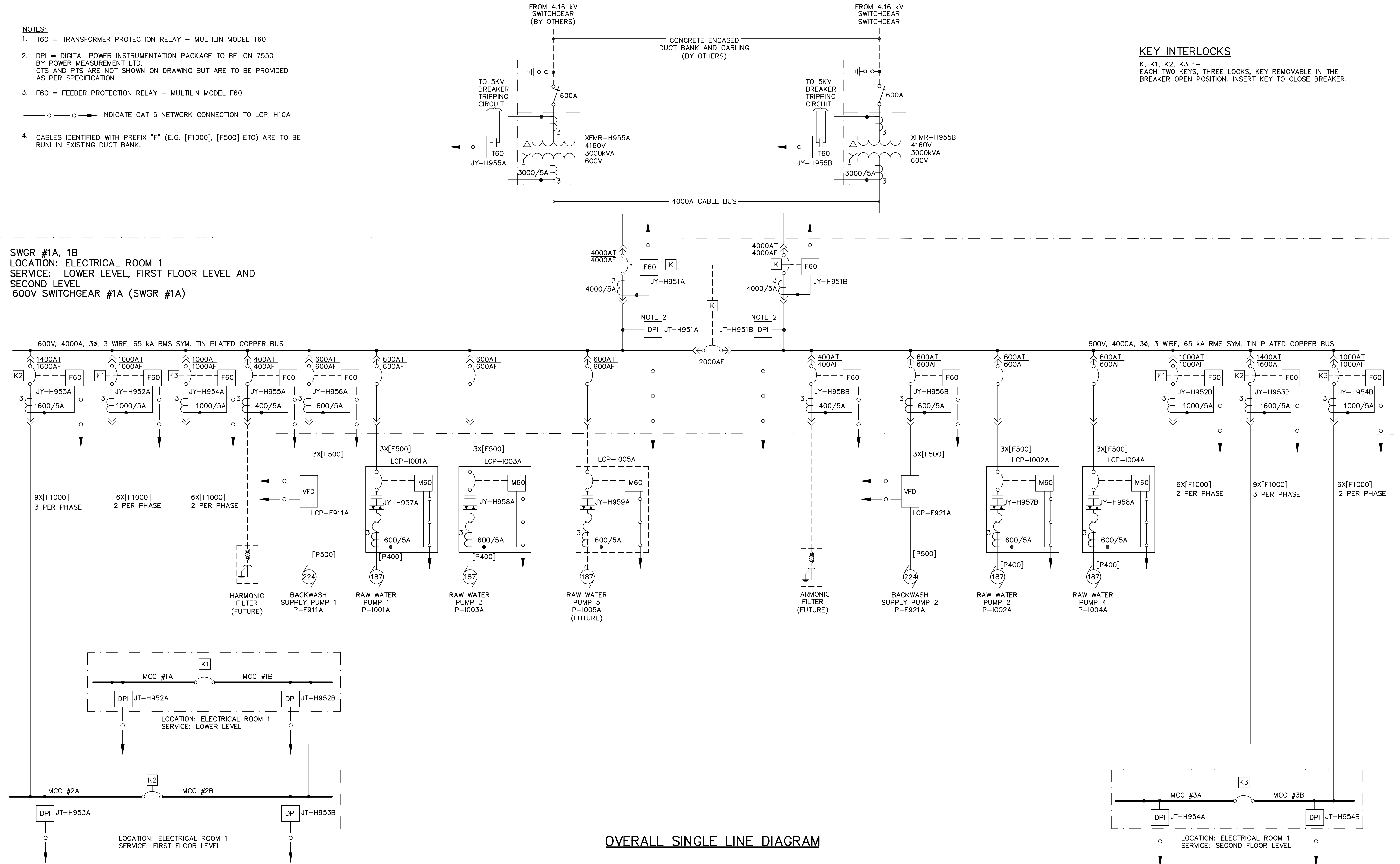
**NOTES:**

1. T60 = TRANSFORMER PROTECTION RELAY - MULTILIN MODEL T60 BY POWER MEASUREMENT LTD. CTS AND PTS ARE NOT SHOWN ON DRAWING BUT ARE TO BE PROVIDED AS PER SPECIFICATION.
2. DPI = DIGITAL POWER INSTRUMENTATION PACKAGE TO BE ION 7550
3. F60 = FEEDER PROTECTION RELAY - MULTILIN MODEL F60
- — ○ — ○ INDICATE CAT 5 NETWORK CONNECTION TO LCP-H10A
4. CABLES IDENTIFIED WITH PREFIX "F" (E.G. [F1000], [F500] ETC) ARE TO BE RUN IN EXISTING DUCT BANK.

**KEY INTERLOCKS**

K, K1, K2, K3 :- EACH TWO KEYS, THREE LOCKS, KEY REMOVABLE IN THE BREAKER OPEN POSITION. INSERT KEY TO CLOSE BREAKER.

**SWGR #1A, 1B**  
 LOCATION: ELECTRICAL ROOM 1  
 SERVICE: LOWER LEVEL, FIRST FLOOR LEVEL AND SECOND LEVEL  
 600V SWITCHGEAR #1A (SWGR #1A)



**OVERALL SINGLE LINE DIAGRAM**

 Certificate of Authorization CH2M HILL Canada Ltd. No. 1441 Expiry: April 30, 2006	B.M. ELEV.	 Frederickson Cooper ARCHITECTS	 A Tyco International Ltd. Company	ENGINEER'S SEAL ORIGINAL SIGNED BY L.D. LLEWELLYN 2006/03/29	 THE CITY OF WINNIPEG WATER AND WASTE DEPARTMENT ENGINEERING DIVISION WATER TREATMENT PLANT MAIN BUILDING MECHANICAL AND ELECTRICAL ELECTRICAL 600V SWITCHGEAR SINGLE LINE DIAGRAM	CITY FILE NUMBER SHEET OF	
	00 ISSUED FOR TENDER 06/03/29 LL			DESIGNED BY JT CHECKED BY ND DRAWN BY KJ APPROVED BY AHL		CONSULTANT DRAWING NO. WB-E0511	CITY DRAWING NUMBER 1-0601B-F-E0511-001-000
	INQ. REVISIONS DATE BY DATE 2005/06/29 DATE 2006/03/29			RELEASED FOR CONSTRUCTION BY: R. SOROKOWSKI			