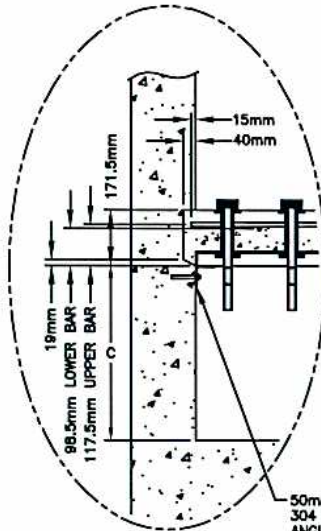
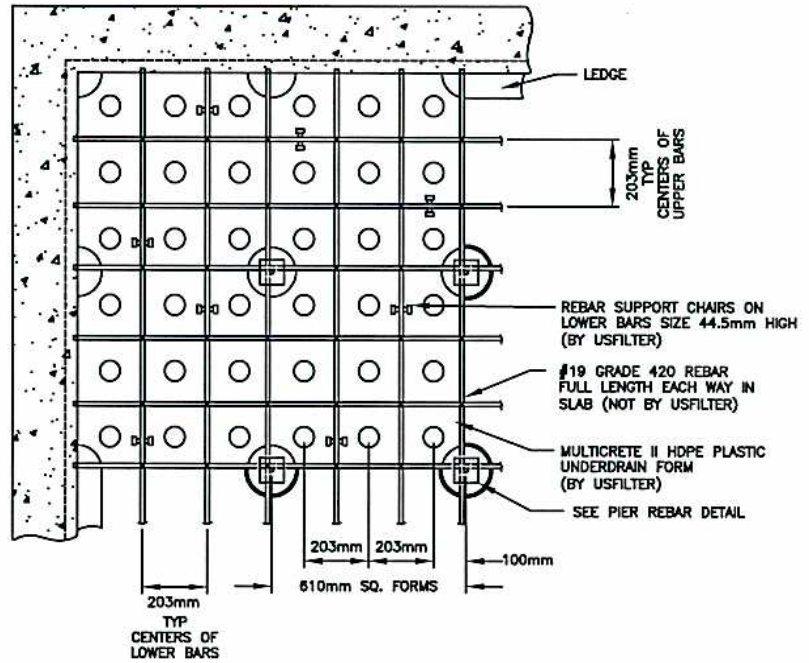
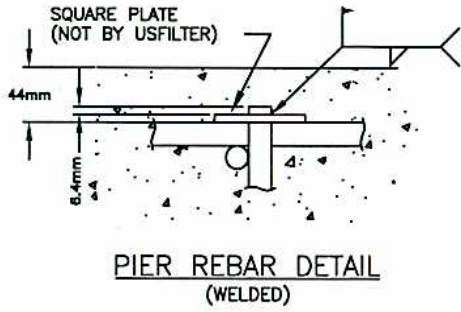
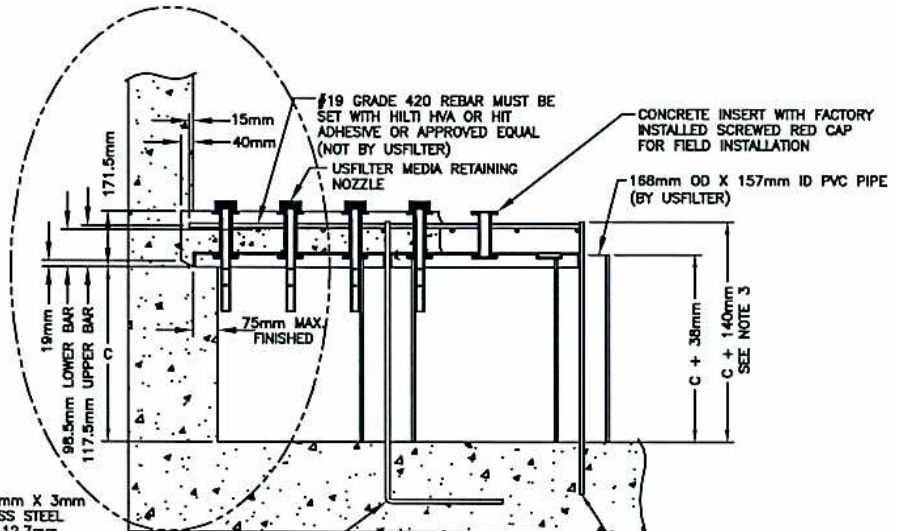


# GENERAL FILTER MULTICRETE II™ MONOLITHIC GRAVITY FILTER UNDERDRAIN WITH KEYWAY



**ANGLE LEDGE  
CURB OPTION B**



**CONCRETE LEDGE  
CURB OPTION A**

**REBAR OPTION A  
#19 GRADE 420 REBAR  
CAST IN PLACE  
(NOT BY USFILTER)  
SEE NOTE 3**

**REBAR OPTION B  
#19 GRADE 420 REBAR MUST BE  
SET WITH HILTI HVA OR HIT  
ADHESIVE OR APPROVED EQUAL  
(NOT BY USFILTER)  
SEE NOTE 3**

**NOTES:**

1. CONCRETE FILL BY CONTRACTOR IS TO BE 351.63 KG/SQ. CM. OR BETTER. REBAR TO BE ASTM #19 METRIC, GRADE 420 MINIMUM.
2. DO NOT ALLOW FINAL CONCRETE DEPTH TO EXCEED THE HEIGHT OF THE RED CAPS. SCREED AND THEN TROWEL THE CONCRETE TO THE LEVEL OF THE RED CAPS.
3. DEPTH AND LENGTH OF PIER REBAR EMBEDMENT IS DEPENDANT UPON DESIGN UPLIFT ON UNDERDRAIN AND SIZE/GRADE OF REBAR USED.

NOTE: CONFIGURATIONS SHOWN ARE STANDARD ALTERNATES REF. DATA SHEETS D-24.89 & D-262.711

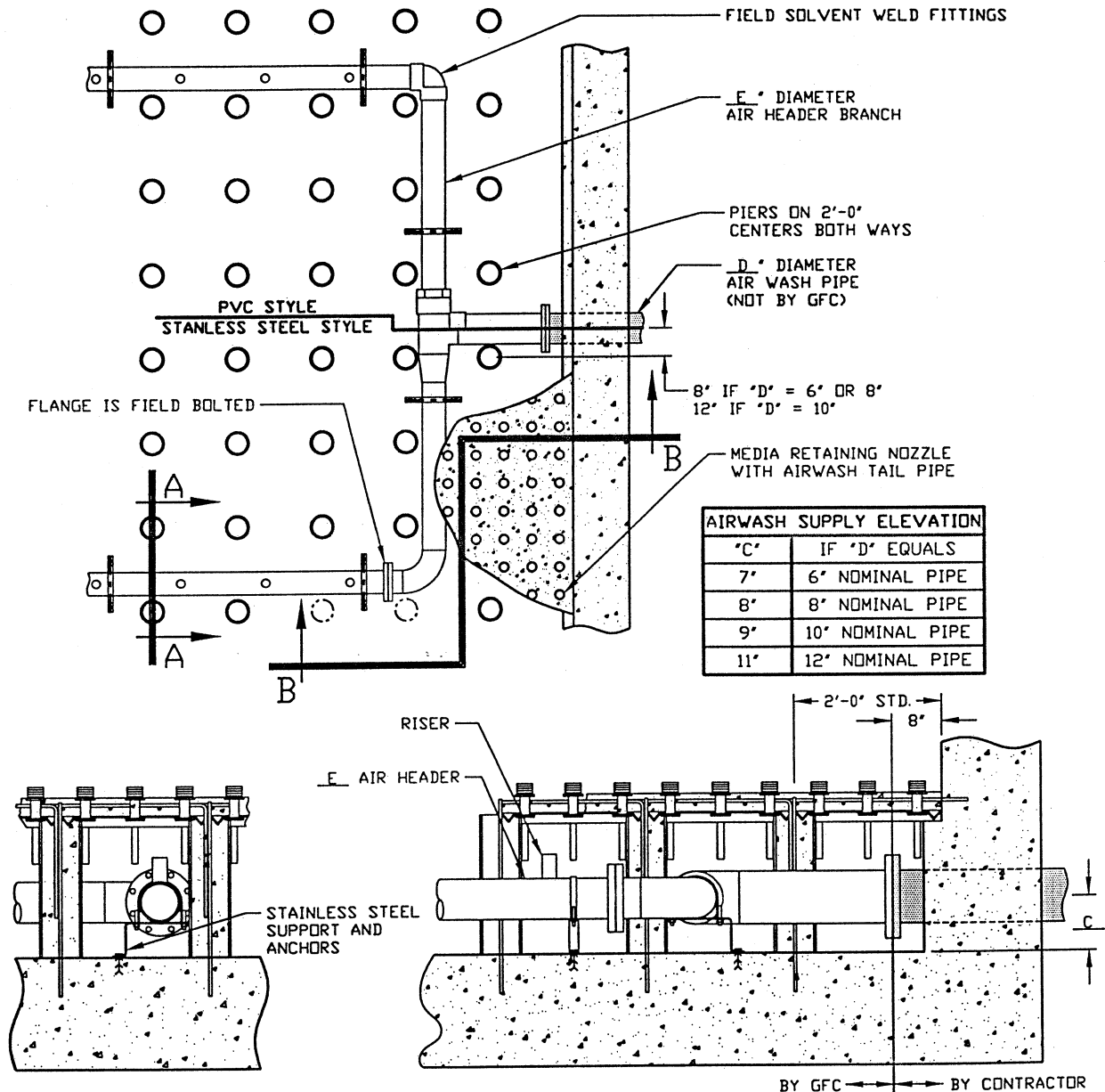
UNDERDRAIN HEIGHT C	CURB OPTION		REBAR OPTION	
0.61m	A	B	A	B



A-28426-1M  
REV. 12-07-04

# MULTIWASH<sup>®</sup> AIR DISTRIBUTION HEADER

FOR MULTICRETE II<sup>™</sup> UNDERDRAINS  
GREATER THAN & EQUAL TO 20'-0" SQUARE



SECTION A-A

SECTION B-B

**NOTES:**

- AIR DISTRIBUTION HEADER IS AVAILABLE IN SCH 40 PVC OR SCHEDULE 5S 304 STAINLESS STEEL.
- NUMBER, SIZE AND LOCATION OF RISERS AND SUPPORTS ARE TO BE DETERMINED BY GFC.
- STAINLESS STEEL FLANGE BOLTS, NUTS, AND GASKETS ARE BY GFC.

NOTE: CONFIGURATION SHOWN IS STANDARD REF. DATA SHEETS D-24.89

NUMBER PROVIDED	MATERIAL	ELEVATION C	SUPPLY DIA. - D	BRANCH DIA. - E

D-272.71

**U.S. FILTER**

**GF**  
GENERAL FILTER PRODUCTS  
AMES, IOWA

A-28420  
NEW 6-1-96