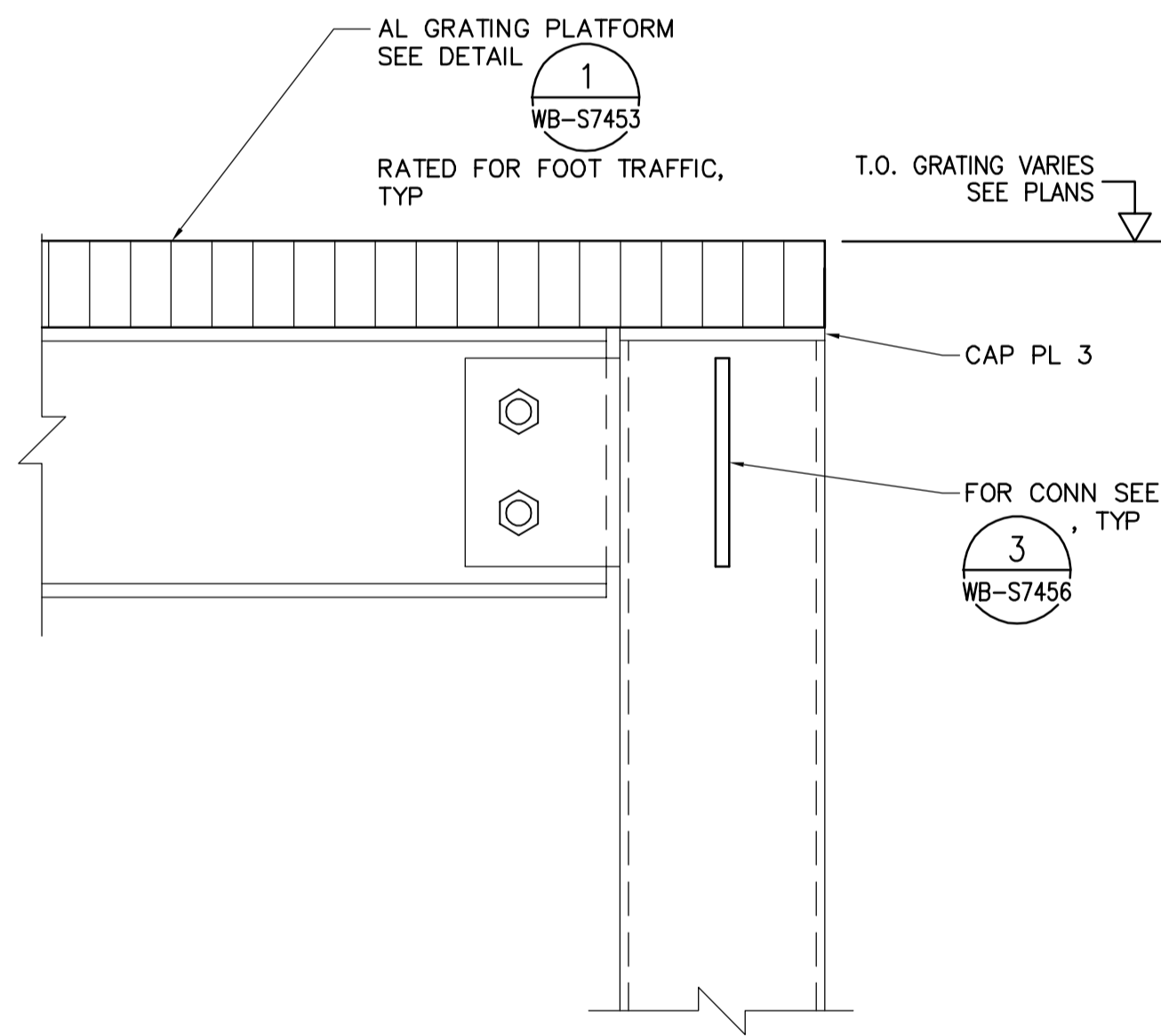


NOTES:

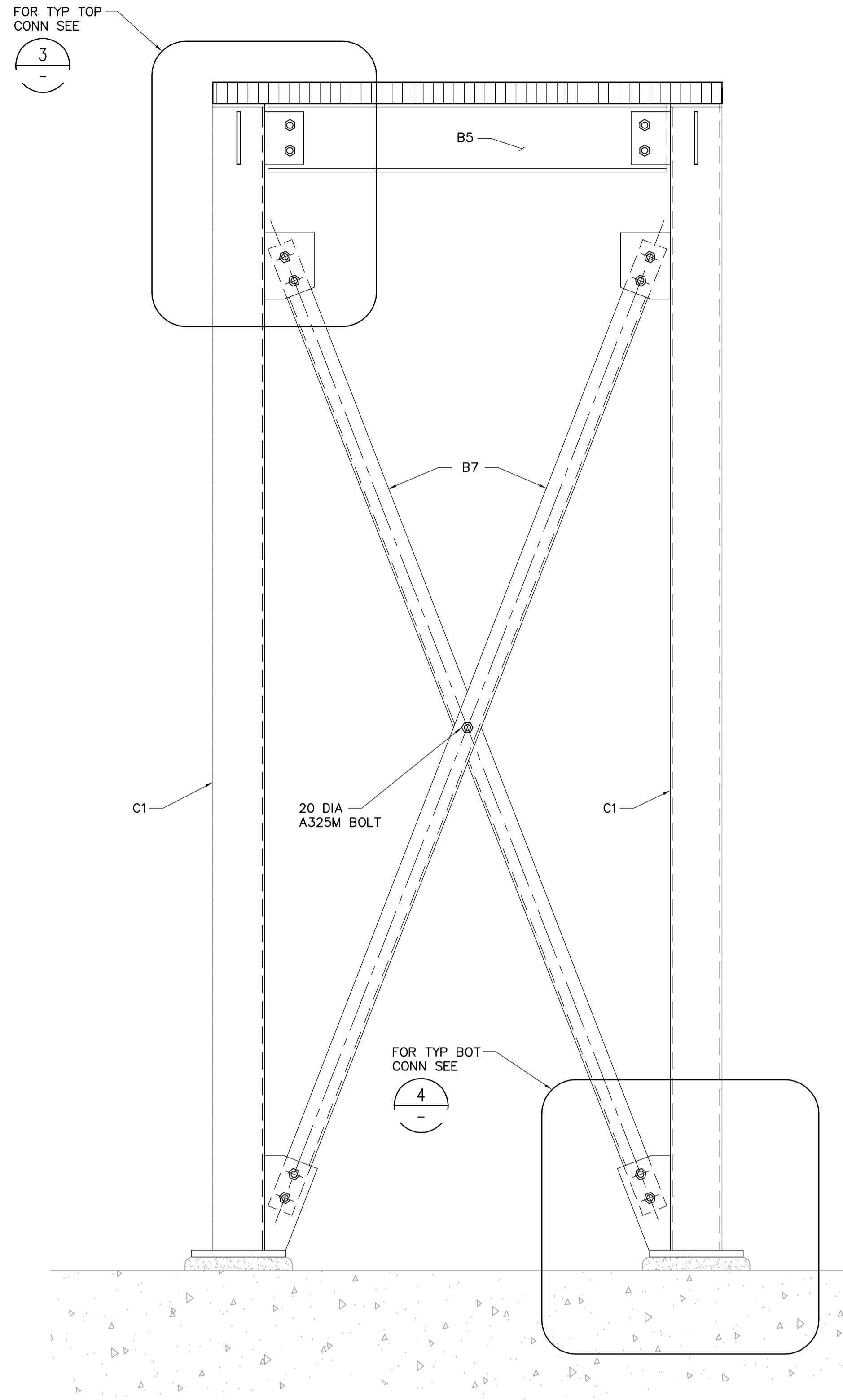
1. DETAIL SHOWS ARRANGEMENT AT A TYPICAL CORNER CONNECTION. ADAPT TO SUIT ARRANGEMENT AT EACH CORNER.
2. PROVIDE PROTECTION BETWEEN DISSIMILAR METALS.

TYPICAL BM/COL PLATFORM CONNECTION

1 DETAIL
WA-S7121 1:5

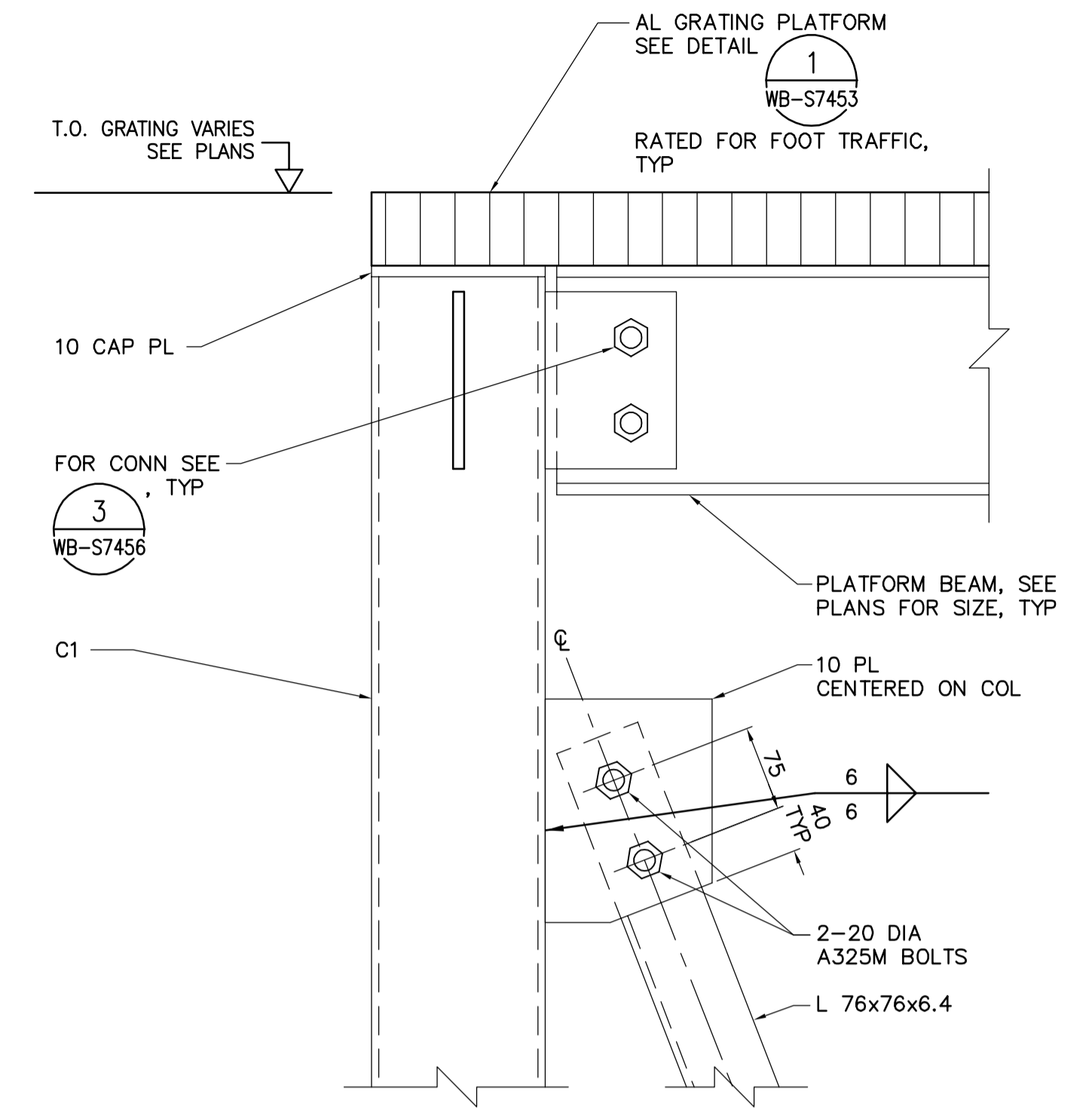


A SECTION
1:5

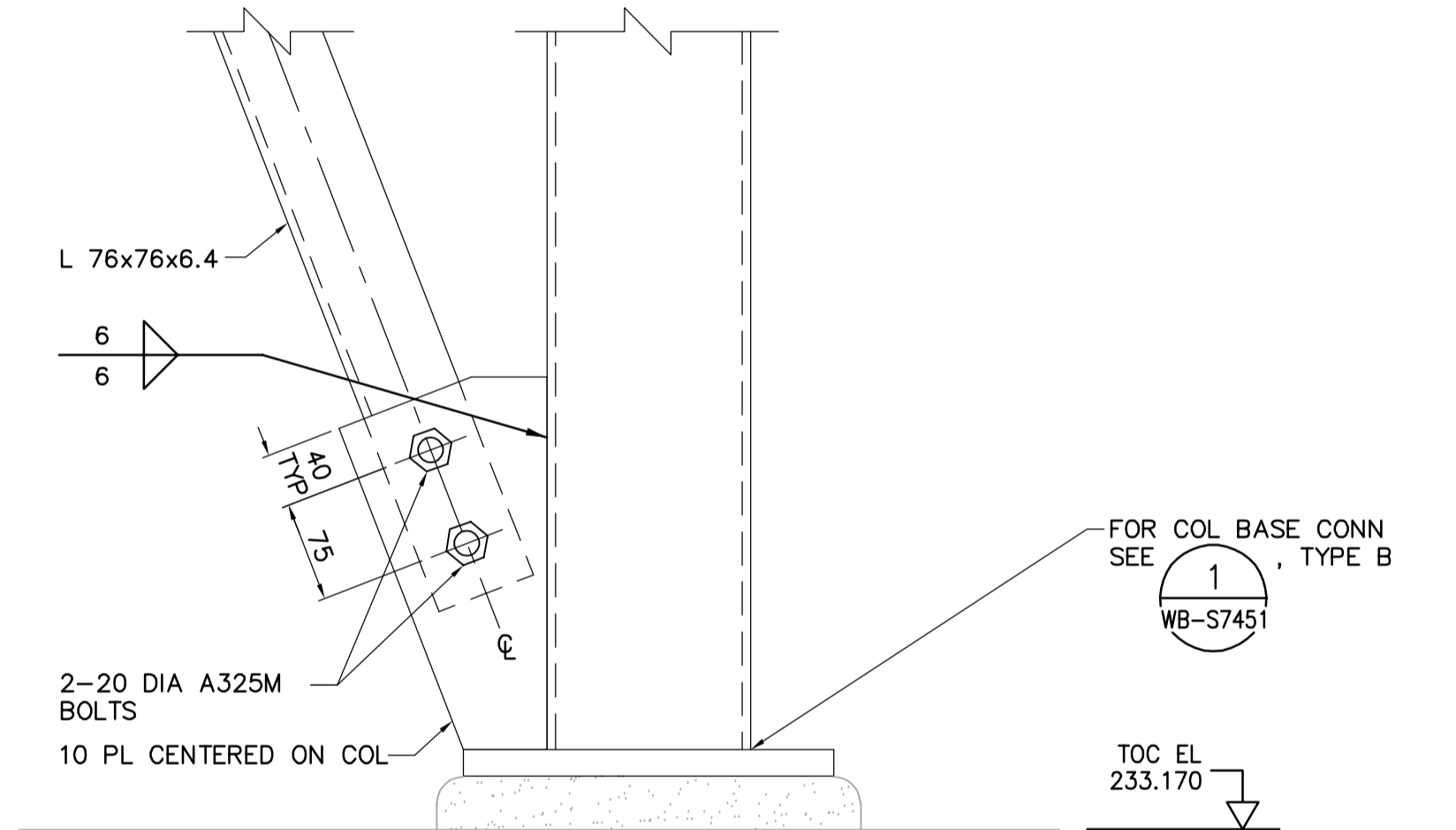


PLATFORM VERTICAL BRACING ELEVATION

2 DETAIL
WA-S7116 1:10



3 DETAIL
1:5



4 DETAIL
1:5

NOTES:

MEMBER SIZES:

- B1 - W200x27
- B2 - W200x15
- B3 - W310x60
- B4 - L102x102x6.4
- B5 - W200x36
- B6 - W200x22
- B7 - L76x76x6.4, FOR VERTICAL BRACING DETAILS SEE 2
- S1 - W200x42 (2), SEE 2

C WA-S7401

S2 - W200x19 (2), SEE **D** WA-S7401

<p>APEGN Certificate of Authorization CH2M HILL Canada Ltd. No. 1441 Expiry: April 30, 2007</p>	<p>Frederickson Cooper ARCHITECTS</p>		<p>EarthTech A Tyco International Ltd. Company</p>		<p>ENGINEER'S SEAL</p> <p>ORIGINAL SIGNED BY D. KRUGER 2006/04/28</p>	<p>THE CITY OF WINNIPEG WATER AND WASTE DEPARTMENT ENGINEERING DIVISION</p> <p>WATER TREATMENT PLANT ADMINISTRATION MECHANICAL AND ELECTRICAL</p> <p>STRUCTURAL ADMINISTRATION AREA DETAILS</p>	<p>CITY FILE NUMBER</p>
	<p>DESIGNED BY EL CHECKED BY AP</p>		<p>DRAWN BY CA APPROVED BY AHL</p>		<p>CONSULTANT DRAWING NO. WA-S7403</p>		<p>SHEET OF</p>
	<p>SCALE: AS NOTED</p>		<p>RELEASED FOR CONSTRUCTION BY: R. SOROKOWSKI</p>		<p>DATE 2006/03/24</p>		<p>CITY DRAWING NUMBER 1-0601A-A-S7403-001-000</p>
	<p>NO. REVISIONS</p>	<p>DATE</p>	<p>BY</p>	<p>DATE</p>	<p>DATE</p>		<p>DATE</p>