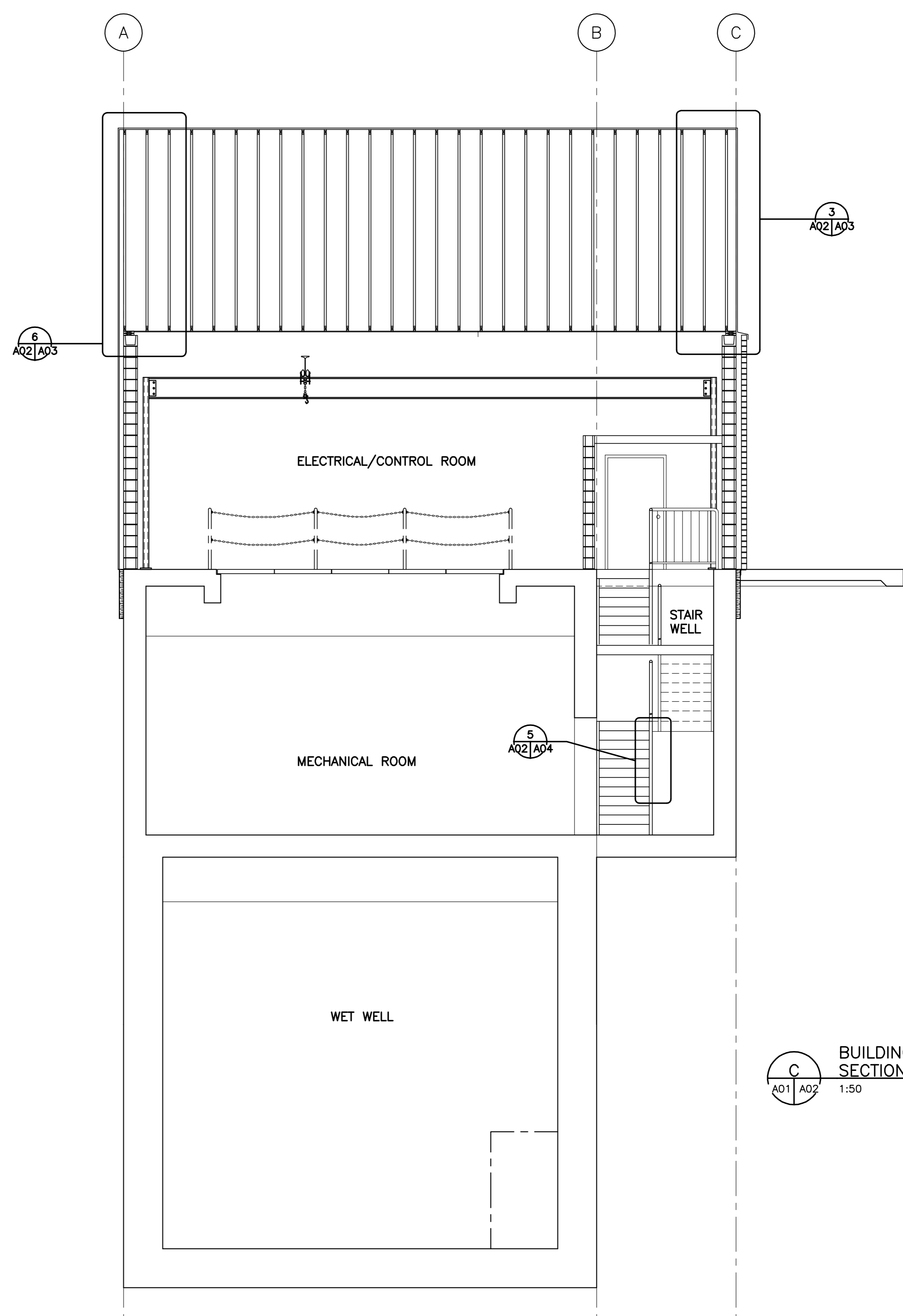


- KEY NOTES**
- ① 12mm DRYWALL - PAINTED
 - ② 45 MINUTE RATED STAIR WELL
 - ③ 150mm LIGHT WEIGHT CONCRETE BLOCK

B
A01 | A02
BUILDING SECTION
1:50



C
A01 | A02
BUILDING SECTION
1:50

V:\113703042\113703042 - Kenaston UP PUMPING STATION\CONTRACT 5 - Rumpke\113703042-A01.dwg
 2020-12-09 03:19:04 By: imc002

METRIC
WHOLE NUMBERS INDICATE MILLIMETRES
DECIMALIZED NUMBERS INDICATE METRES

LOCATION APPROVED UNDERGROUND STRUCTURES		B.M. ELEV.
SUPV. U/G STRUCTURES COMMITTEE	DATE	
NOTE: LOCATION OF UNDERGROUND STRUCTURES AS SHOWN ARE BASED ON THE BEST INFORMATION AVAILABLE BUT NO GUARANTEE IS GIVEN THAT THE GIVEN LOCATIONS ARE EXACT. CONFIRMATION OF EXISTENCE AND EXACT LOCATION OF ALL SERVICES MUST BE OBTAINED FROM THE INDIVIDUAL UTILITIES BEFORE PROCEEDING WITH CONSTRUCTION.		
NO.	REVISIONS	DATE BY

Stantec Consulting Ltd. 905 Waverley Street, Winnipeg, Manitoba Tel 204-489-5900 Fax 204-453-9012		ENGINEER'S SEAL
DESIGNED BY: RD	CHECKED BY: AJR	ORIGINAL SEALED BY Verne Reimer ARCHITECT 05.12.09
DRAWN BY: MI/BJM/BL	APPROVED BY: AJR	
HOR. SCALE: AS SHOWN	AUTHORIZED BY: R. FINGAS R. FINGAS, P. ENG. BRIDGE PROJECTS ENGINEER	DATE: 05.12.09
DATE: 05.10.13		CONSULTANT DRAWING NO. 113703042-A02

THE CITY OF WINNIPEG PUBLIC WORKS DEPARTMENT ENGINEERING DIVISION		SHEET OF
		12 OF 25
KENASTON UNDERPASS KENASTON UNDERPASS PUMPING STATION		CAD FILE DRAWING NUMBER 113703042-A01.dwg
ARCHITECTURAL - BUILDING SECTIONS		CITY DRAWING NUMBER P-3256-156