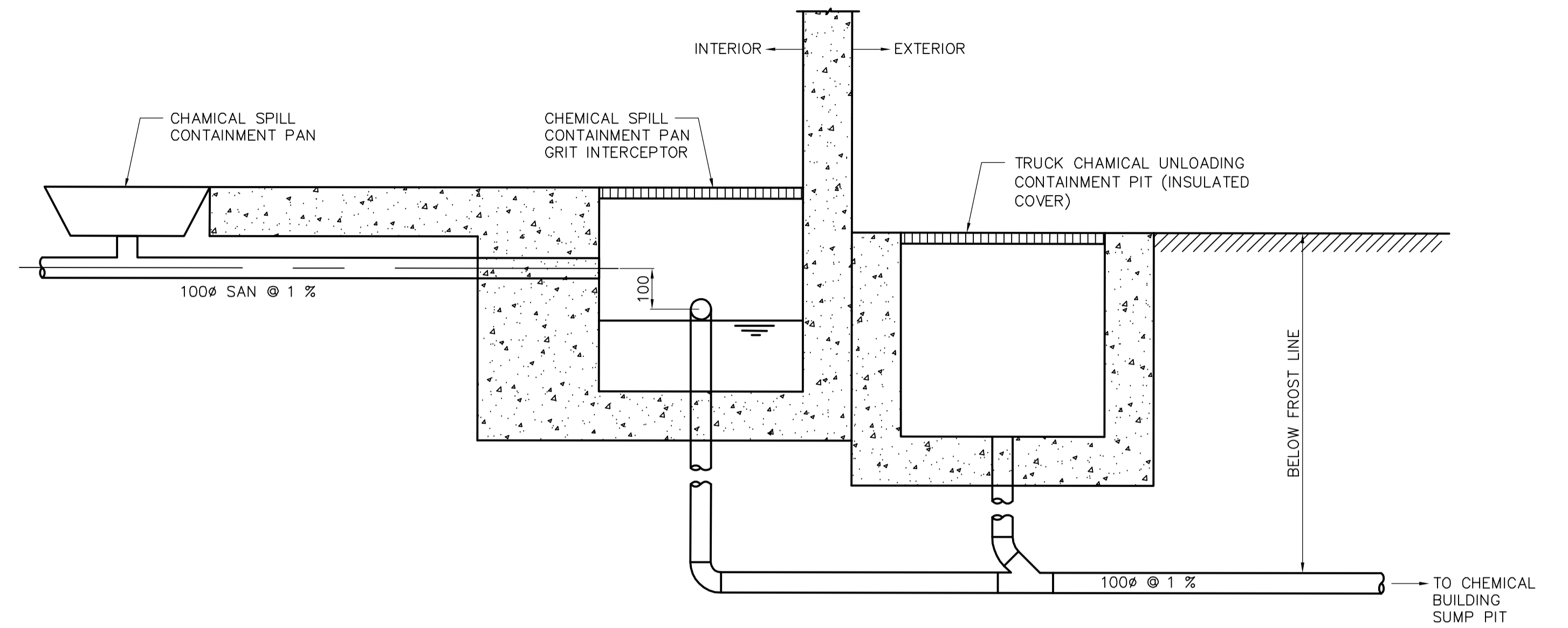
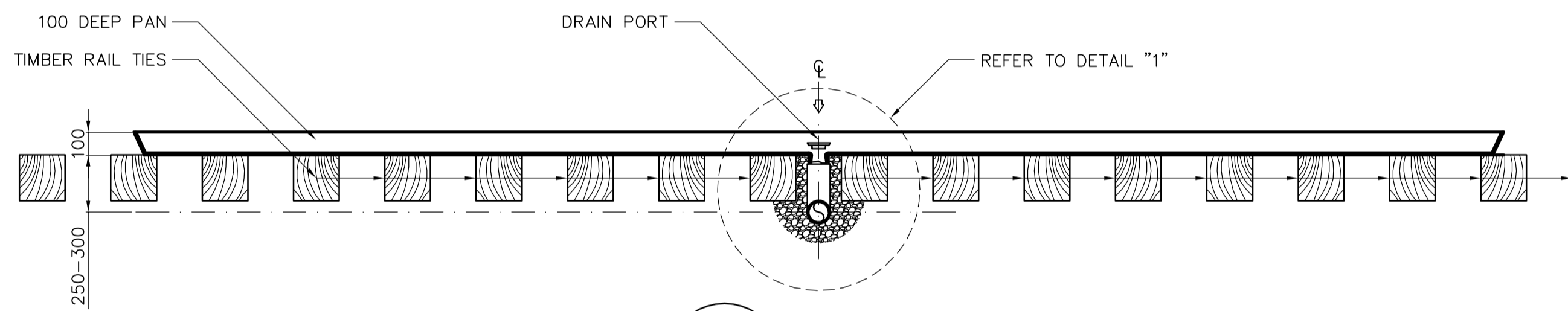


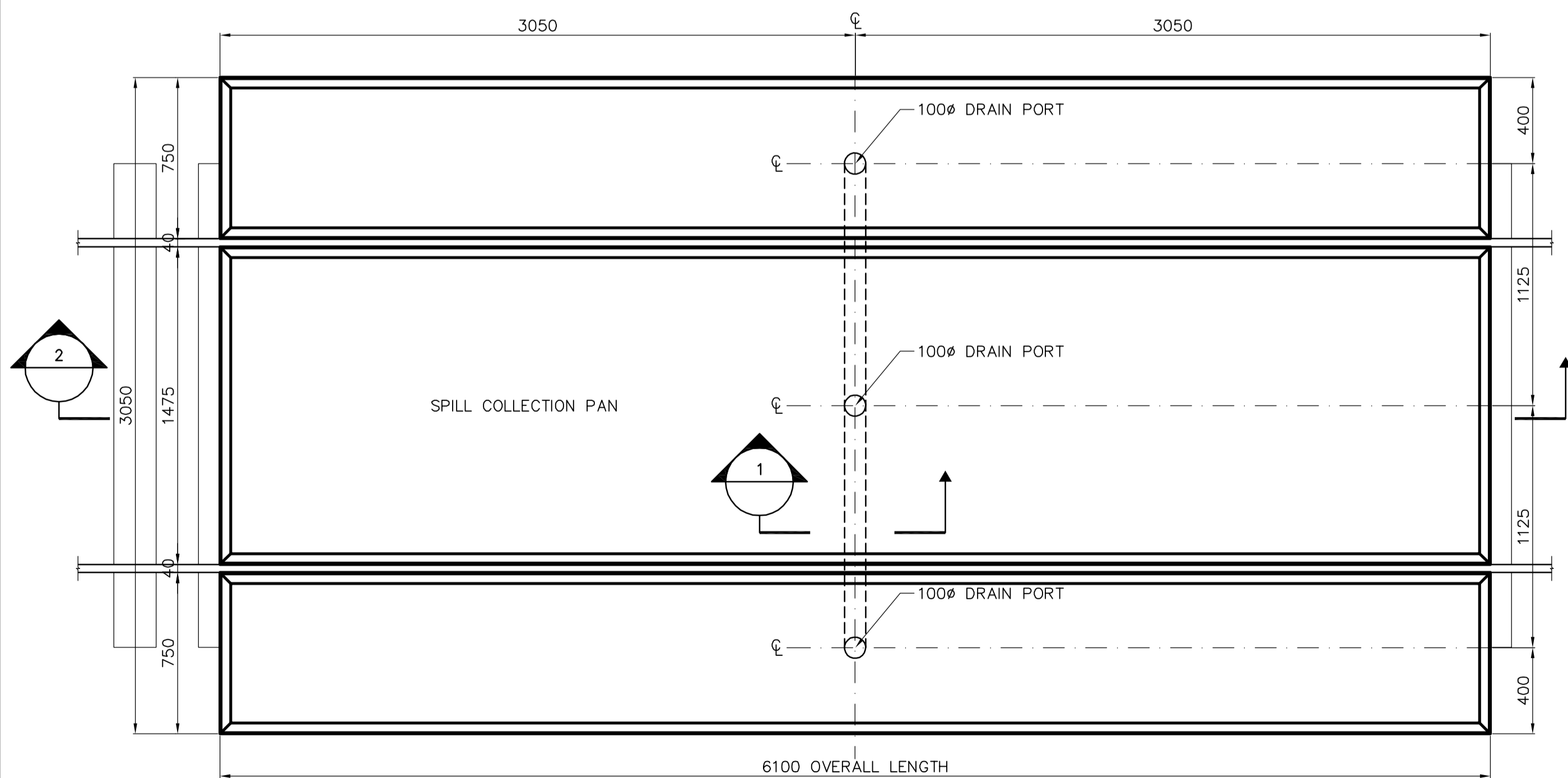
**1** DETAIL  
SCALE 1:5



**4** SECTION DETAIL  
CM1.01 SCALE 1:20



**2** SECTION DETAIL  
SCALE 1:20



**3** SECTION DETAIL  
SCALE 1:20

**STAR TRACK CONTAINMENT SYSTEM**

**MATERIAL:** FIBERGLASS RESIN & GLASS MAT  
HEAVY DUTY COMPOSITE WALLS &  
DECK WALL THICKNESS 13.  
**NOTE:** PLUMBING MUST TRAVEL BENEATH  
TRACKS (AS SHOWN).



<b>EarthTech</b> A Tyco International Ltd. Company				ENGINEER'S SEAL  ORIGINAL SIGNED BY P. TATARYN 2005/12/02		<b>THE CITY OF WINNIPEG</b> WATER AND WASTE DEPARTMENT ENGINEERING DIVISION	
DESIGNED BY: LW DRAWN BY: GLG SCALE: AS NOTED				CHECKED BY: AA APPROVED BY: D. TANIGUCHI RELEASED FOR CONSTRUCTION BY: K. MARTENS		NEWPCC CENTRATE NUTRIENT TREATMENT PHOSPHORUS REMOVAL FACILITY CONTRACT No. 1	
NO. 00 ISSUED FOR TENDER 05/12/2 DC REVISIONS DATE BY DATE 2005/10/05 DATE 05/12/02				CONSULTANT DRAWING NO. CM5.02		CITY FILE NUMBER SHEET OF CITY DRAWING NUMBER <b>1-010F-D-M0004-001-00-D</b>	