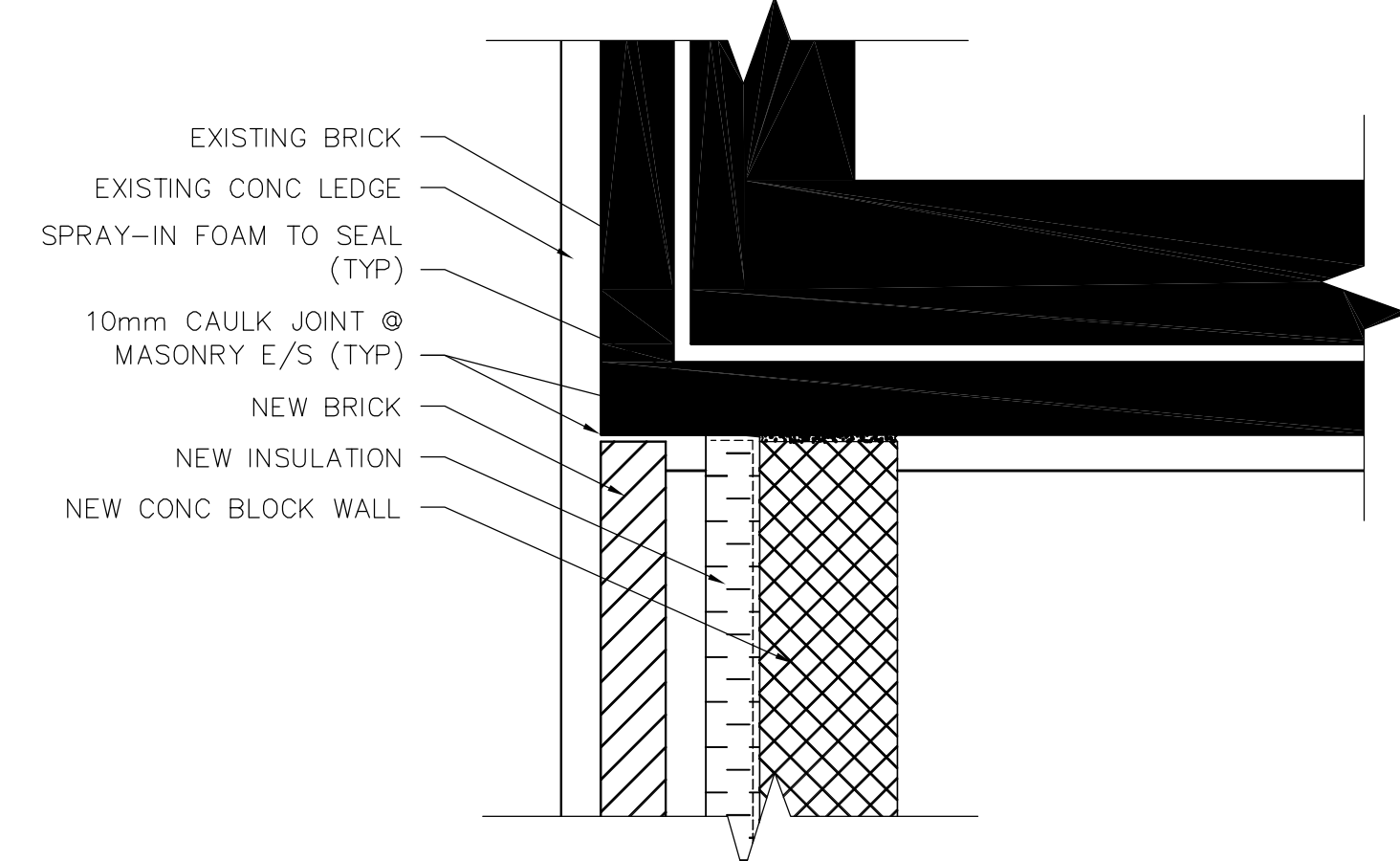
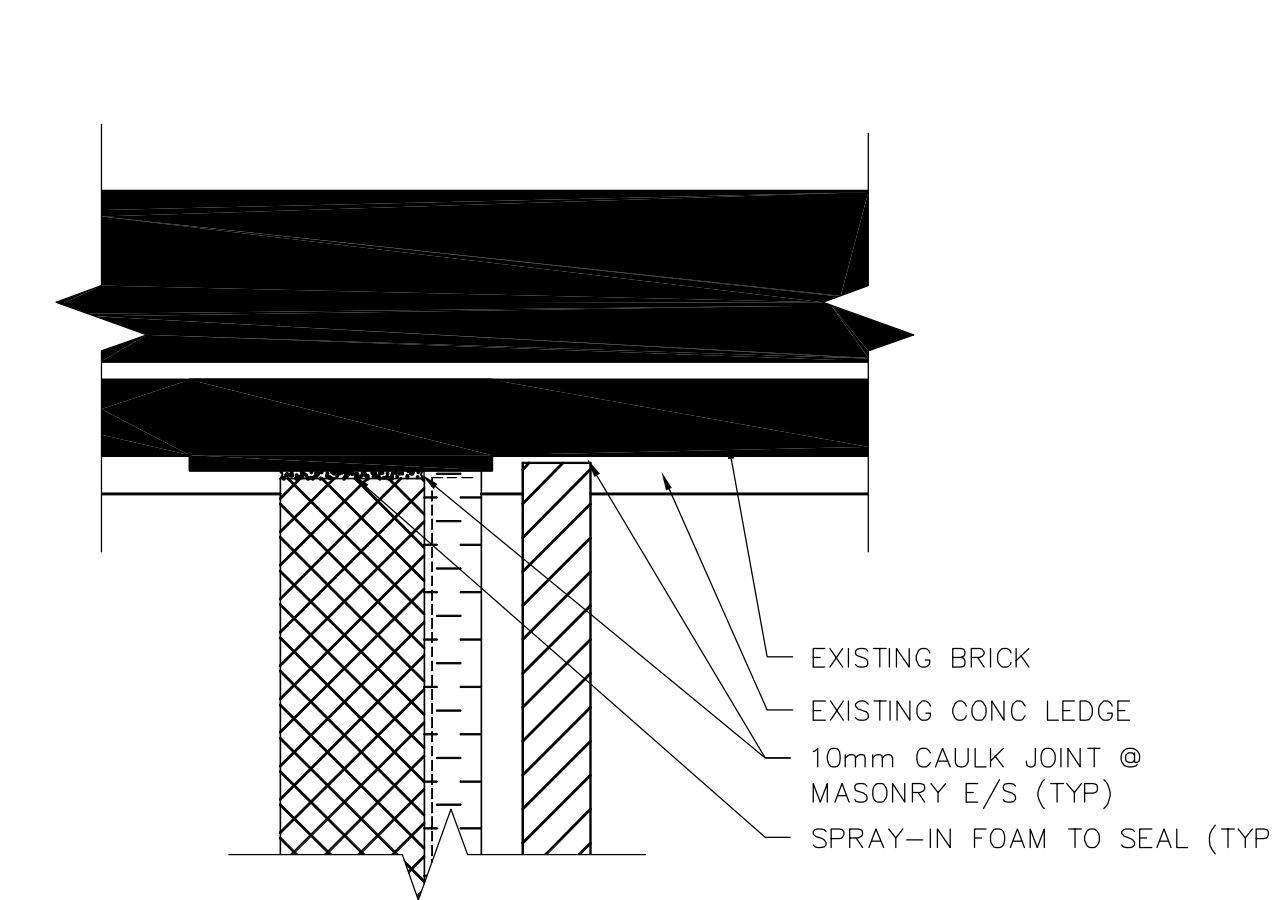


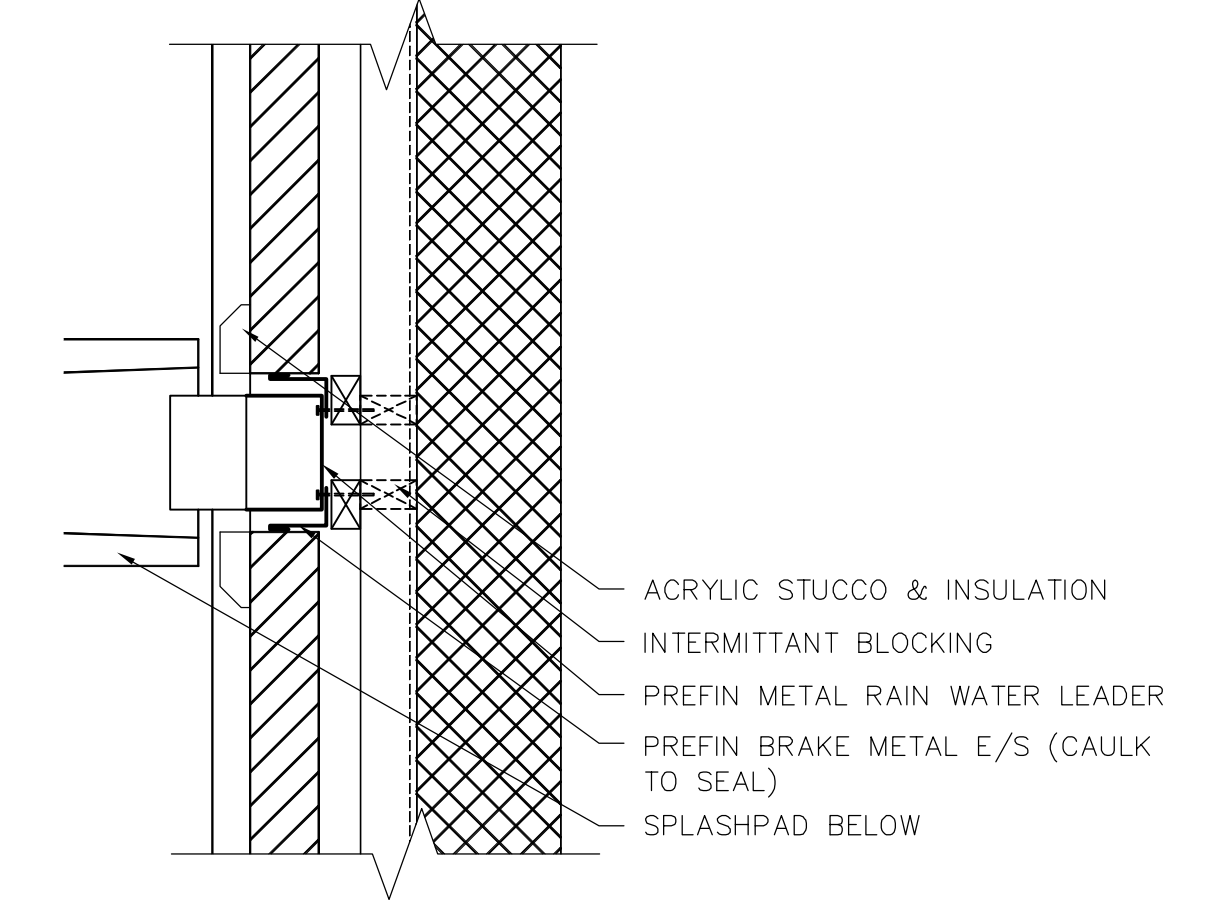
1 TYPICAL WALL SECTION
 A3.03/A3.04 SCALE 1:10



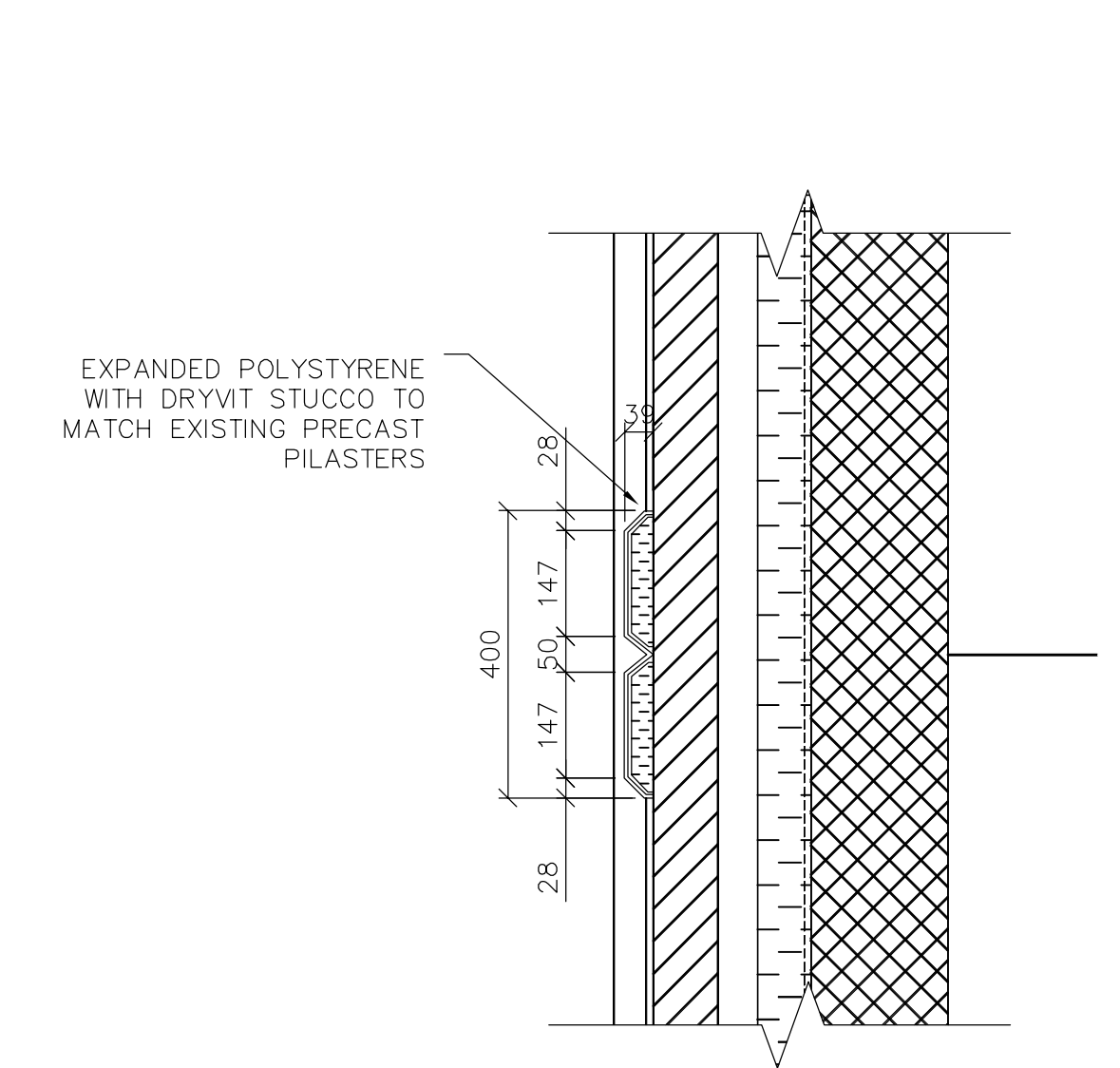
2 WEST BUILDING CONNECTION DETAIL
 A3.01/A3.04 SCALE 1:10



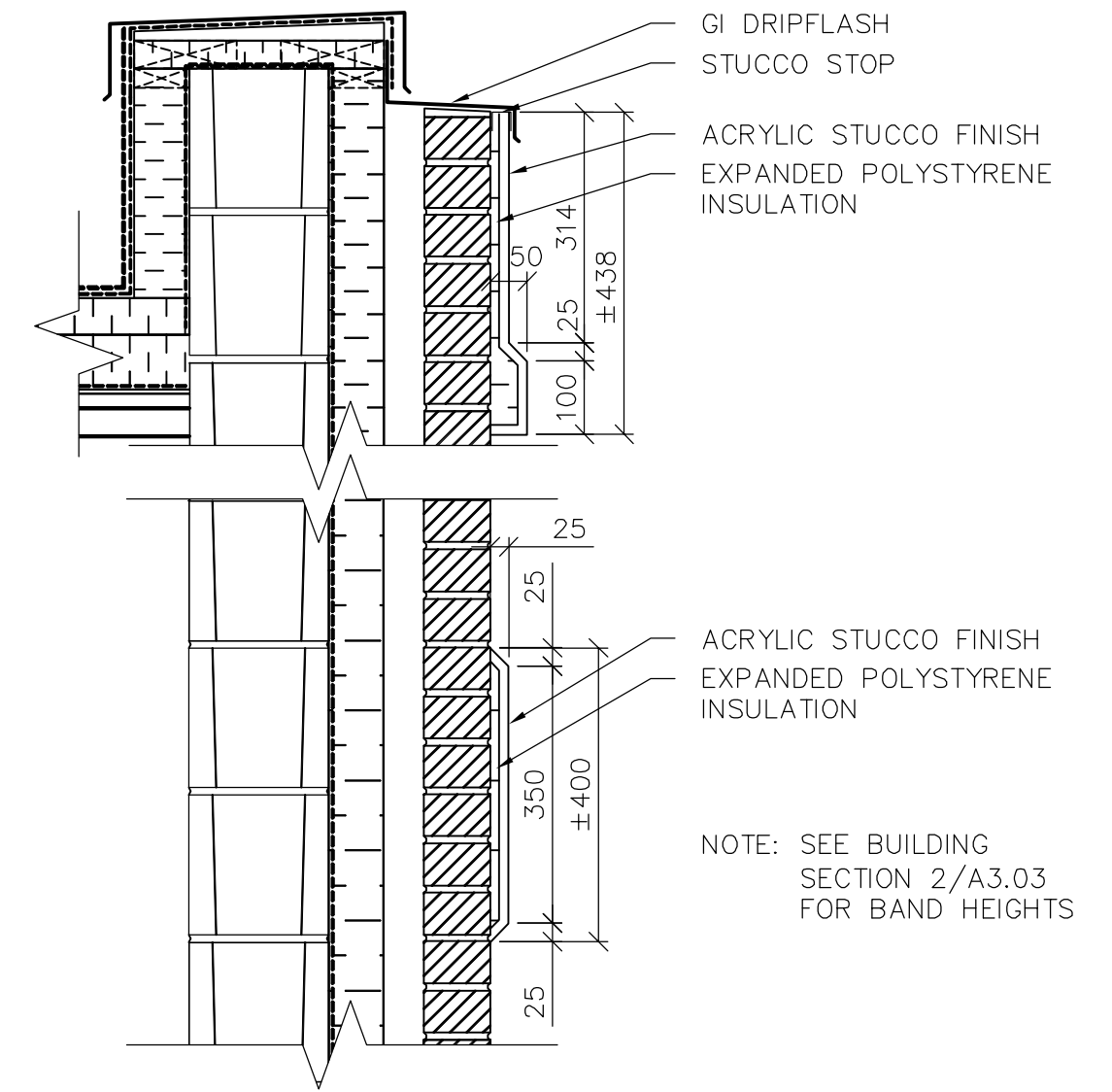
3 EAST BUILDING CONNECTION DETAIL
 A3.01/A3.04 SCALE 1:10



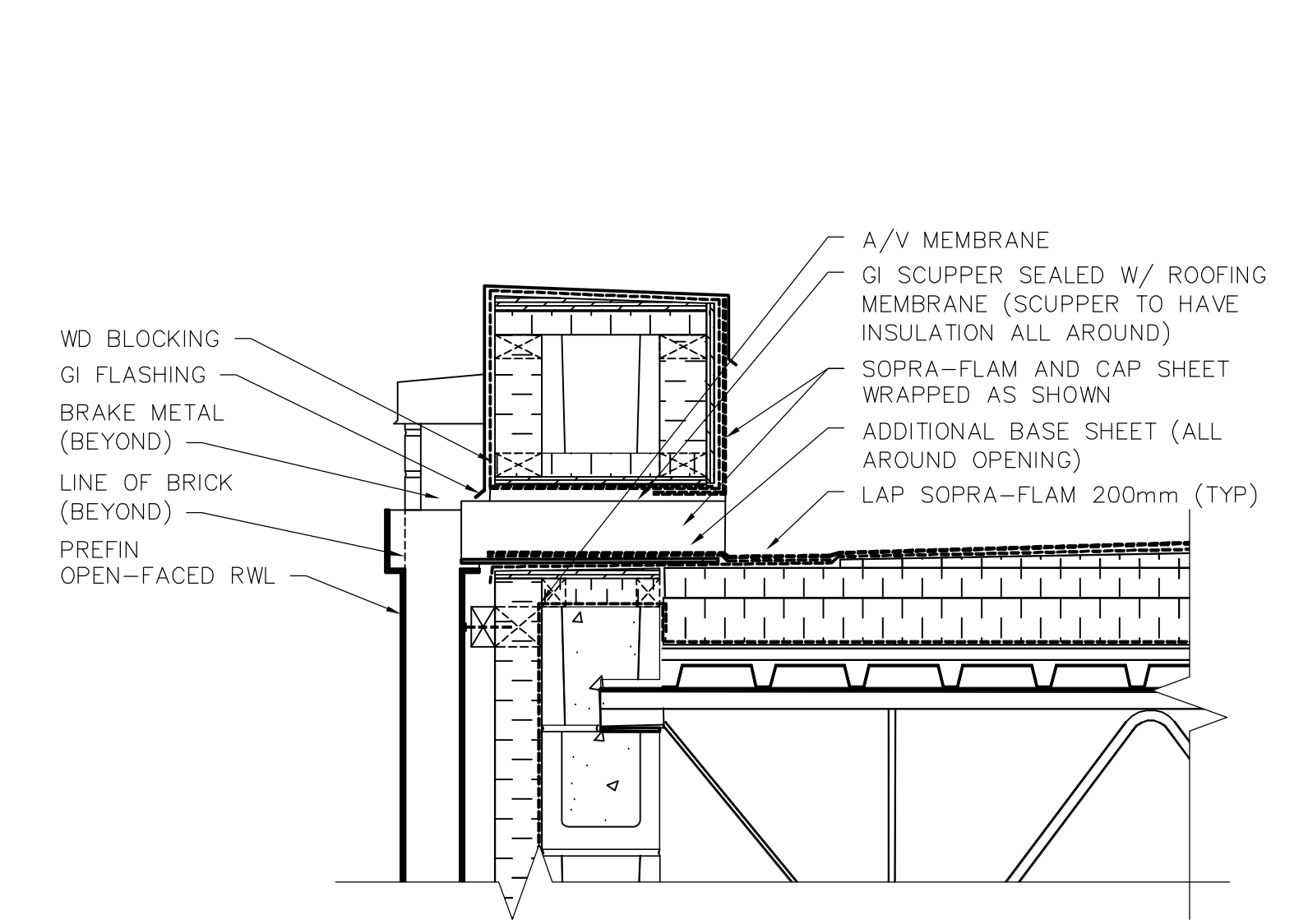
4 RAIN WATER LDR PLAN DETAIL
 A3.01/A3.04 SCALE 1:10



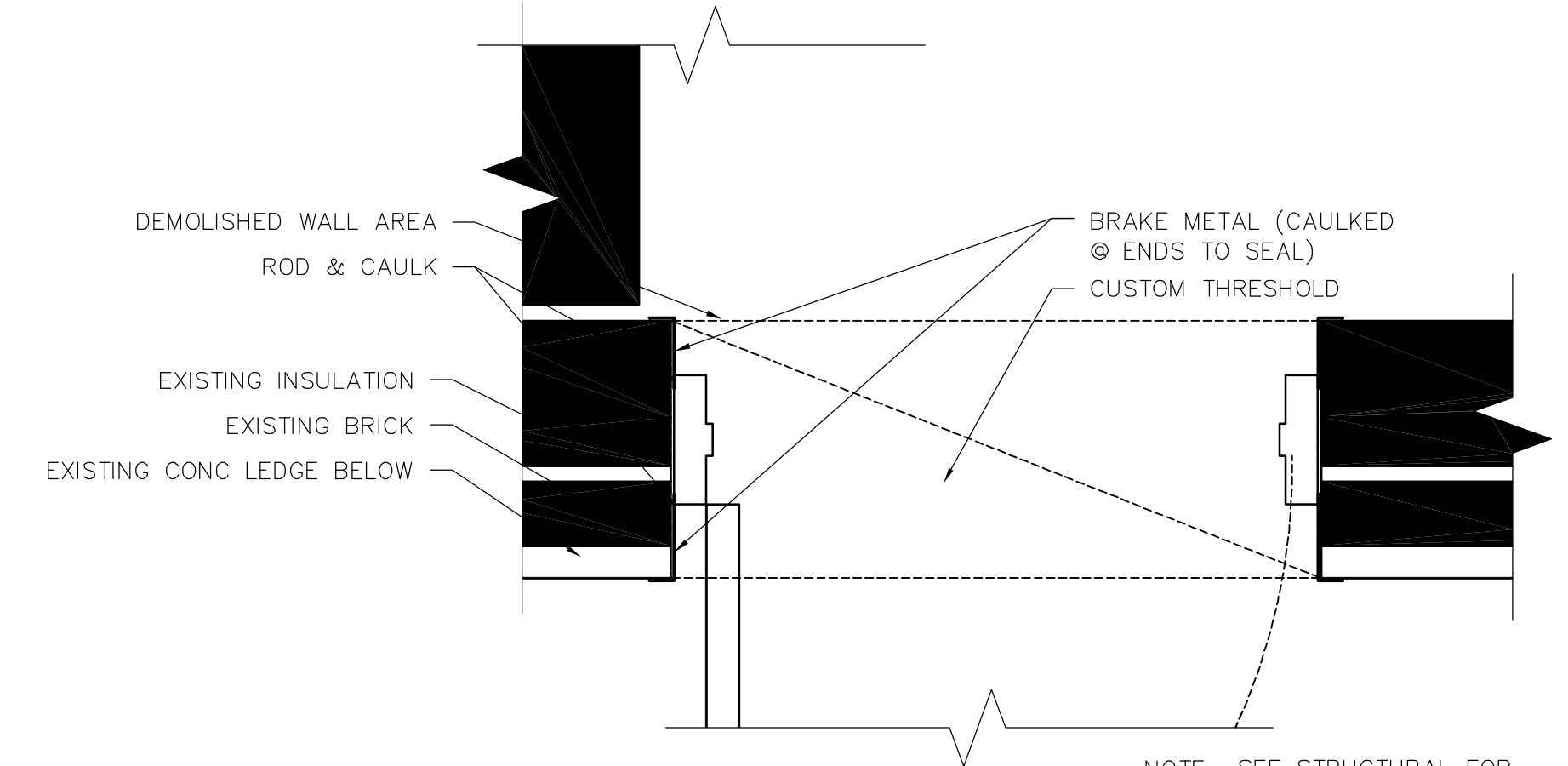
5 TYP STUCCO PILASTER PLAN DETAIL
 A3.01/A3.04 SCALE 1:10



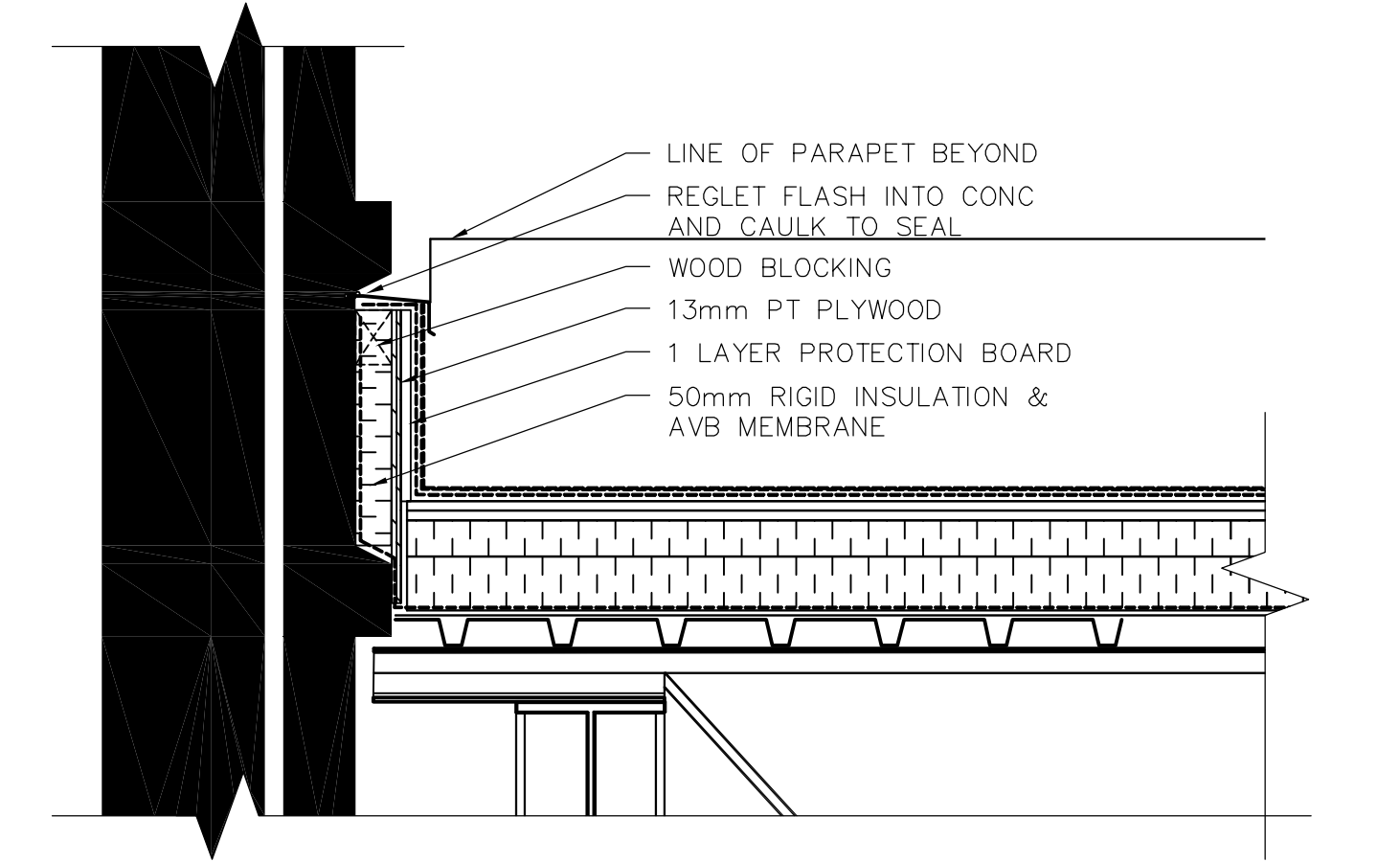
6 TYP STUCCO BAND SECTION DETAIL
 A3.03/A3.04 SCALE 1:10



7 SCUPPER DETAIL
 A3.03/A3.04 SCALE 1:10



8 DOOR FRAME DETAIL
 A3.01/A3.04 SCALE 1:10



9 ROOF TIE-IN DETAIL
 A3.03/A3.04 SCALE 1:10



B.M. ELEV.			
DESIGNED BY	NC	CHECKED BY	NC
DRAWN BY	LK	APPROVED BY	D. TANIGUCHI
SCALE:	AS SHOWN	RELEASED FOR CONSTRUCTION BY:	K. MARTENS
NO. REVISIONS		DATE	2005/10/05
		DATE	05/12/02

EarthTech
 A Tyco International Ltd. Company

ENGINEER'S SEAL
 PROVINCE OF MANITOBA
 ORIGINAL SIGNED BY
 NEIL COOPER
 ARCHITECT
 INC.
 No. 090
 REGISTERED ARCHITECTURAL CORPORATION

CONSULTANT DRAWING NO. CA3.04

THE CITY OF WINNIPEG
 WATER AND WASTE DEPARTMENT
 ENGINEERING DIVISION

NEWPCC CENTRATE NUTRIENT TREATMENT
 PHOSPHORUS REMOVAL FACILITY
 CONTRACT No. 1

ARCHITECTURAL
 CHEMICAL STORAGE BUILDING
 SECTIONS & DETAILS

CITY FILE NUMBER
 SHEET 4 OF 4
 CITY DRAWING NUMBER
 1-00F-A-80008-001-00-D