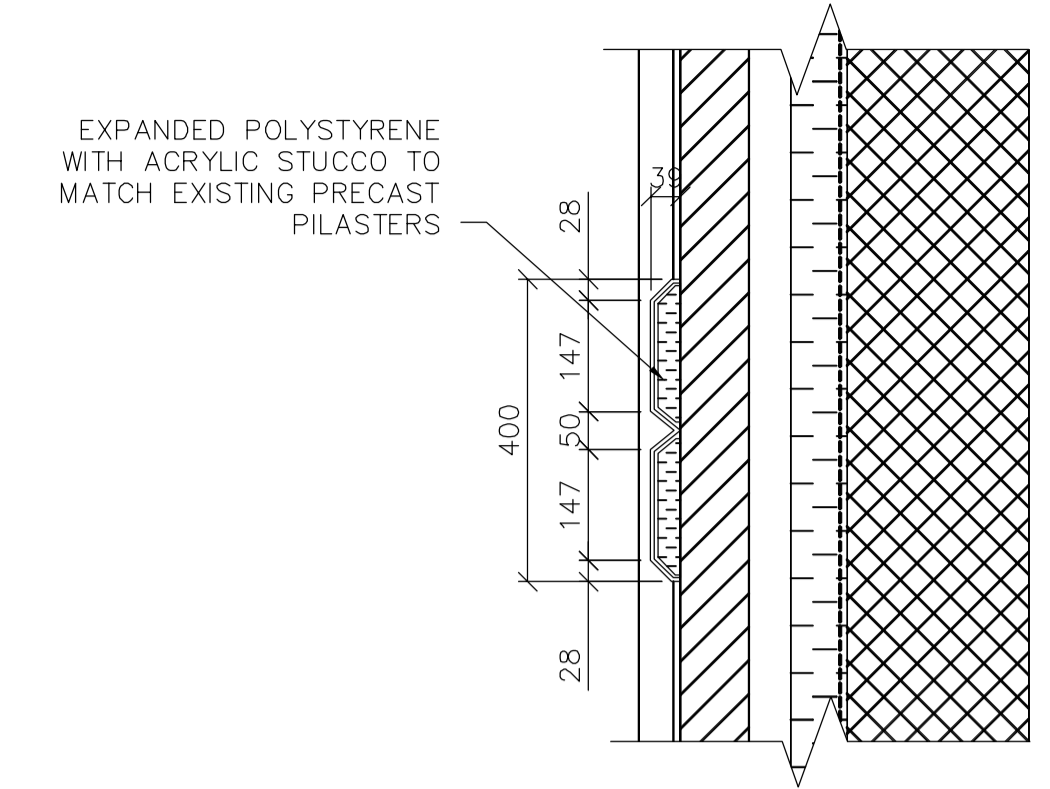
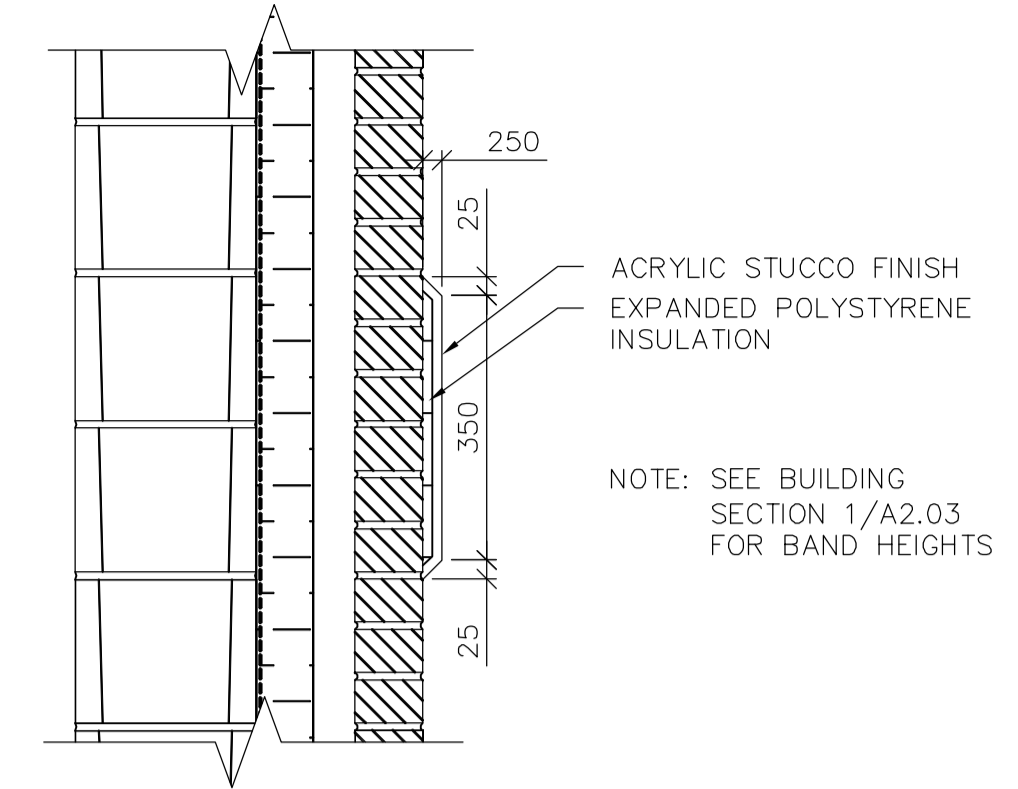


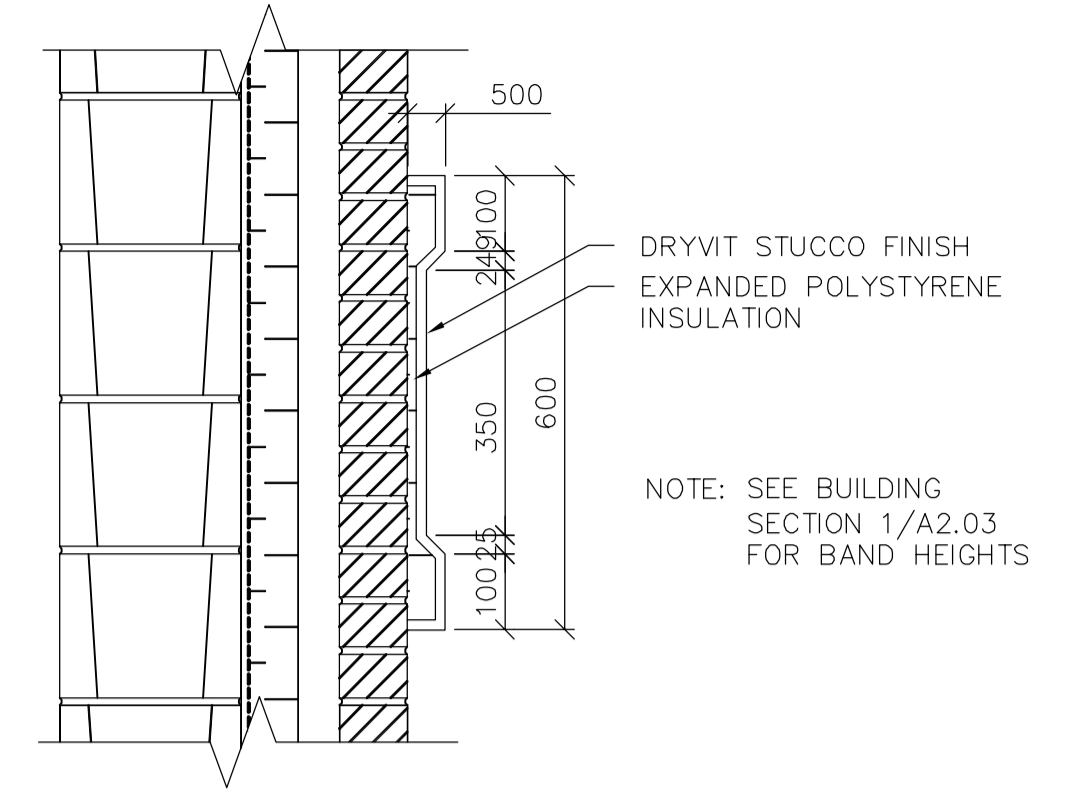
1 TYPICAL WALL SECTION
SCALE 1:10



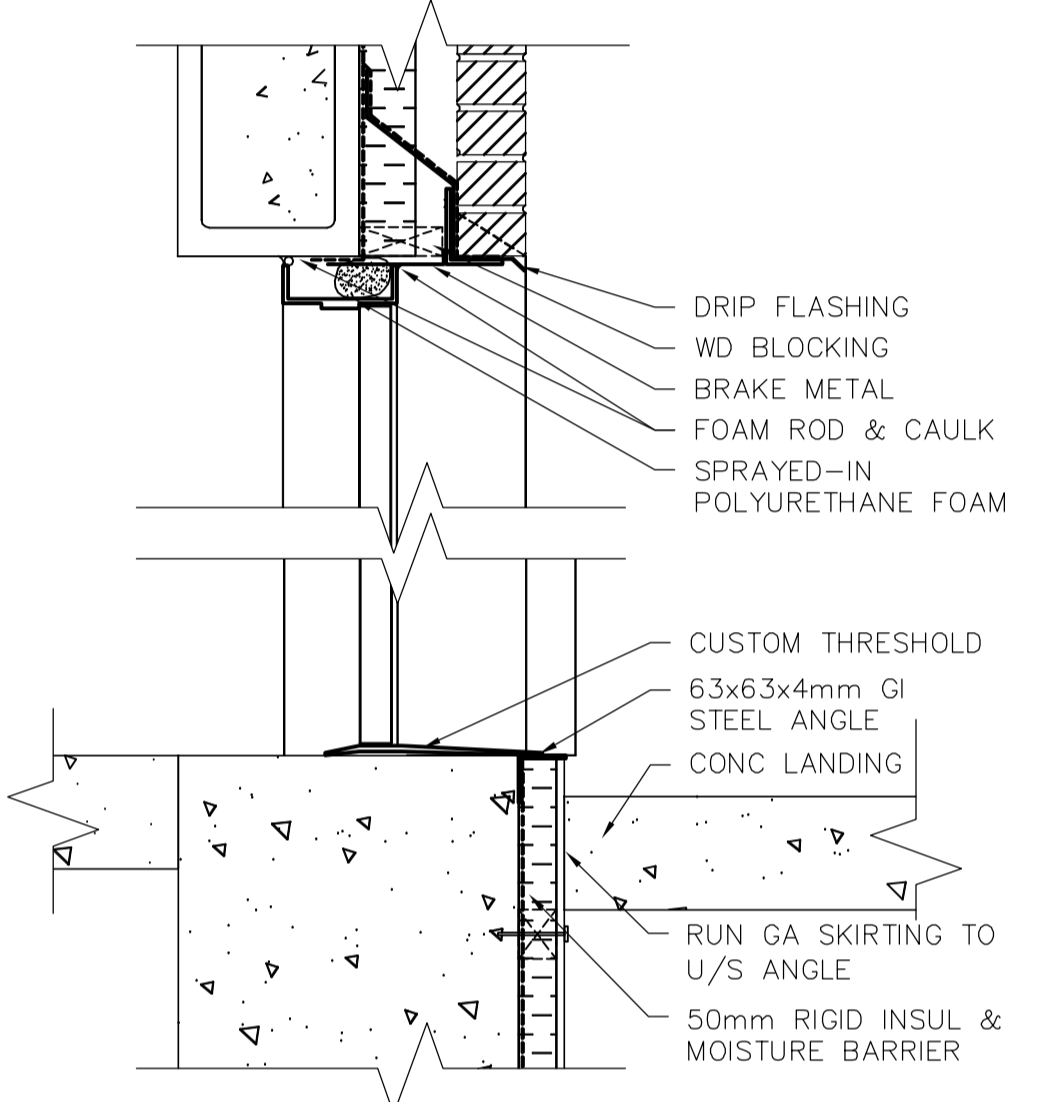
2 STUCCO PILASTER PLAN DETAIL
SCALE 1:10



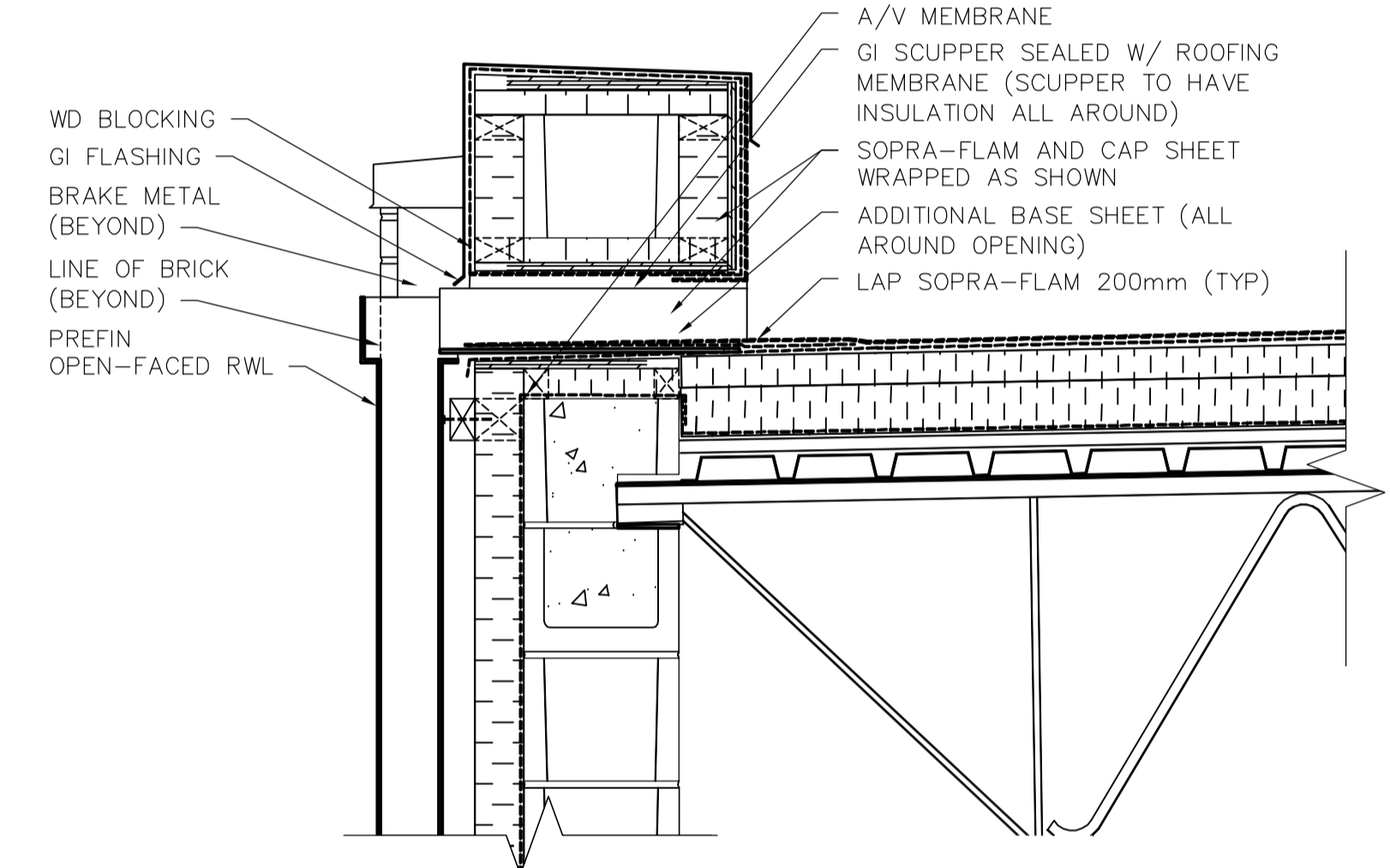
3 STUCCO BAND SECTION DETAIL
SCALE 1:10



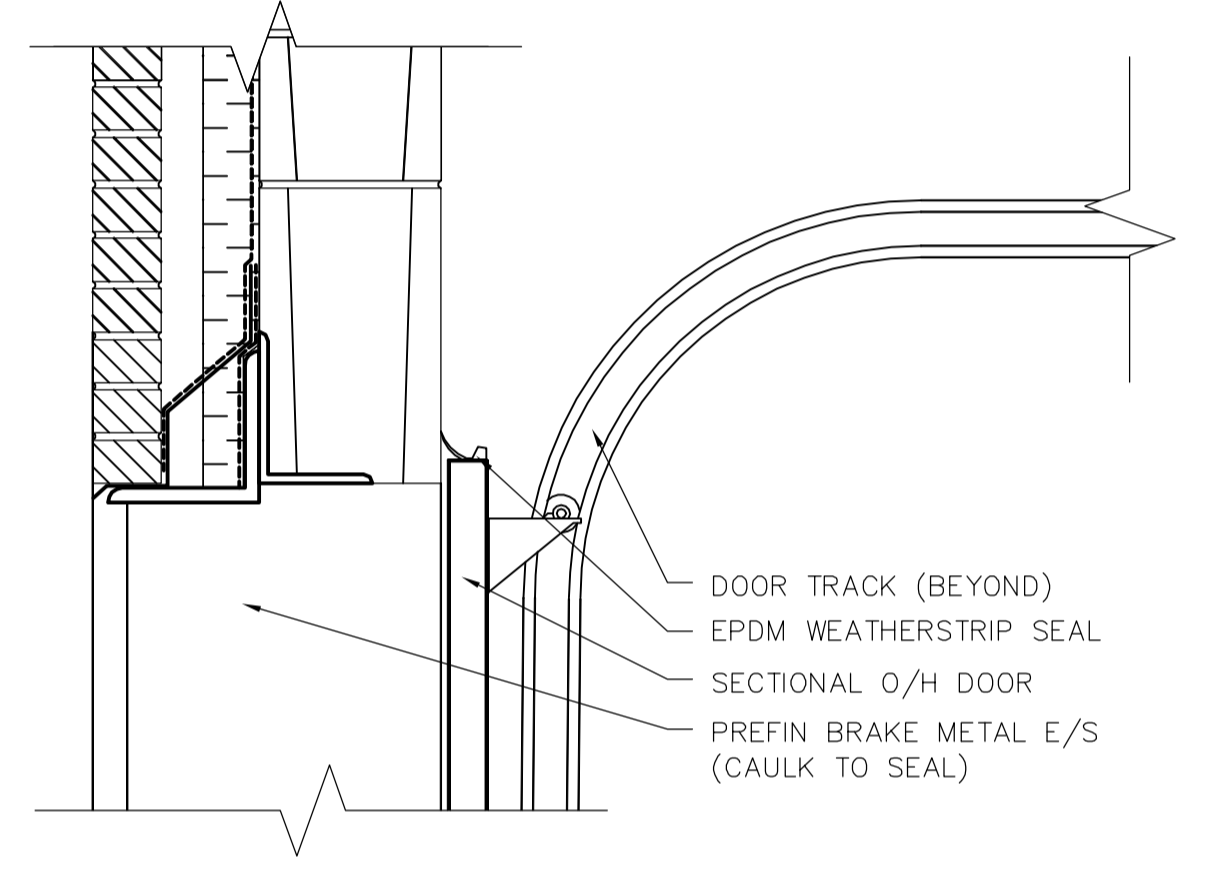
4 STUCCO BAND SECTION DETAIL
SCALE 1:10



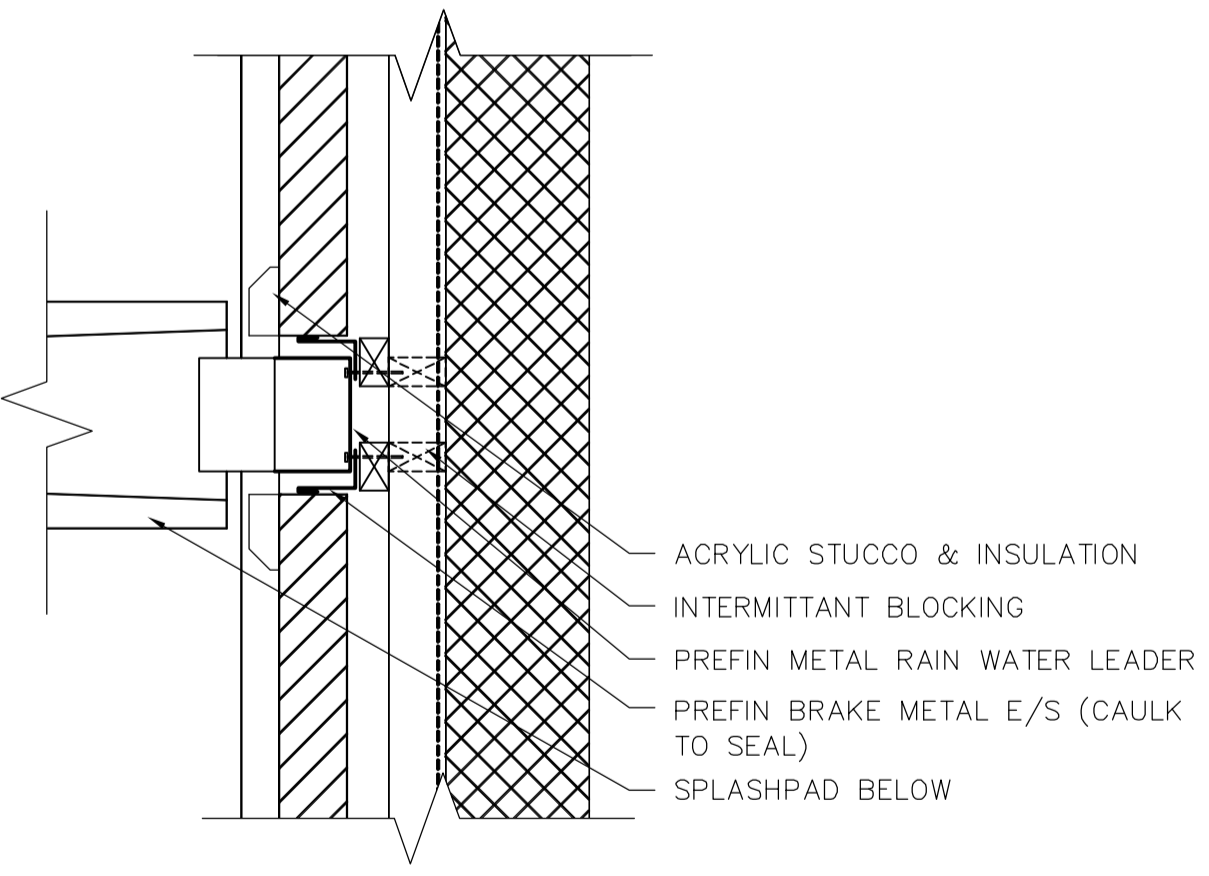
5 DOOR HEAD/SILL SECTION DETAIL
SCALE 1:10



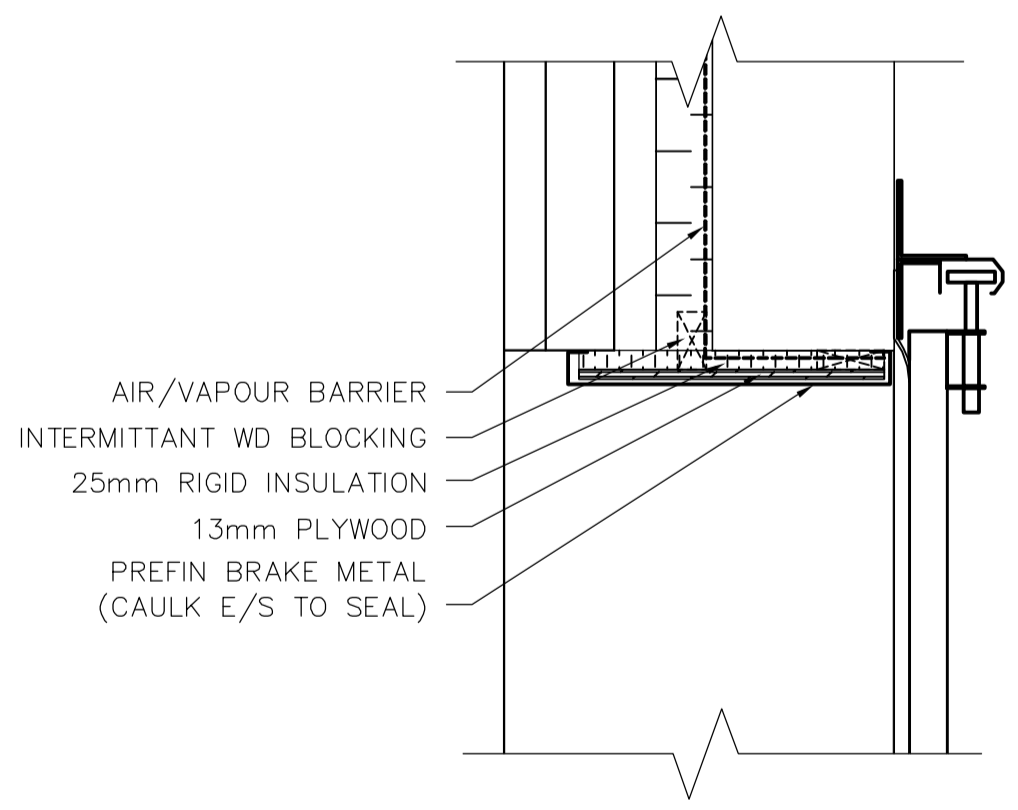
6 SCUPPER SECTION DETAIL
SCALE 1:10



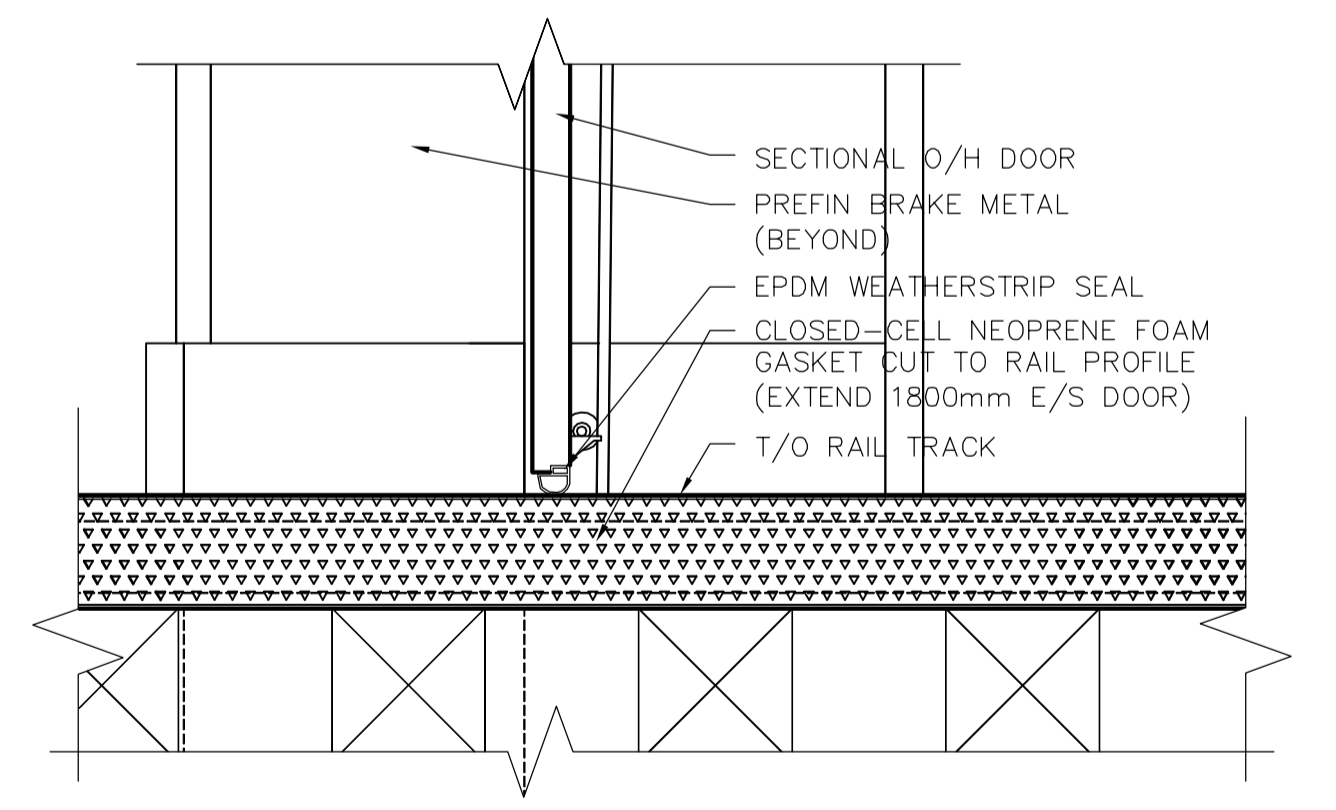
8 O/H DOOR HEAD DETAIL
SCALE 1:10



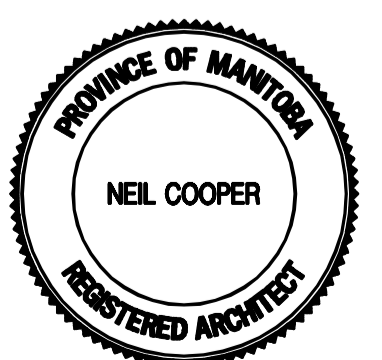
7 RAIN WATER LEADER PLAN DETAIL
SCALE 1:10



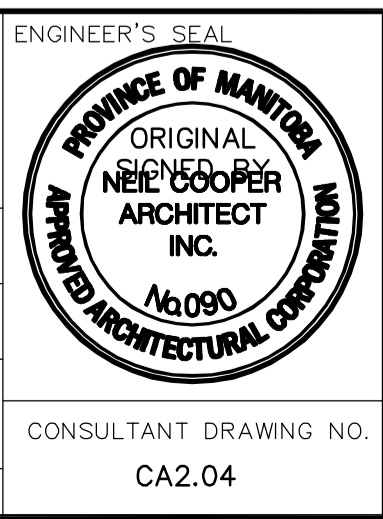
9 O/H DOOR JAMB DETAIL
SCALE 1:10



8 O/H DOOR THRESHOLD DETAIL
SCALE 1:10



B.M. ELEV.					
DESIGNED BY	NC	CHECKED BY	NC		
DRAWN BY	LK	APPROVED BY	D. TANIGUCHI		
SCALE:	AS SHOWN	RELEASED FOR CONSTRUCTION BY:	K. MARTENS		
NO.	ISSUED FOR TENDER	DATE	05/12/02	BY	LK
NO.	REVISIONS	DATE	2005/10/05	DATE	05/12/02



THE CITY OF WINNIPEG
WATER AND WASTE DEPARTMENT
ENGINEERING DIVISION

NEWPCC CENTRATE NUTRIENT TREATMENT
PHOSPHORUS REMOVAL FACILITY
CONTRACT No. 1

ARCHITECTURAL
RAILCAR BUILDING
DETAILS

CITY FILE NUMBER
SHEET 4 OF 4
CITY DRAWING NUMBER
1-00F-A-80004-01-00-D

CONSULTANT DRAWING NO.
CA2.04