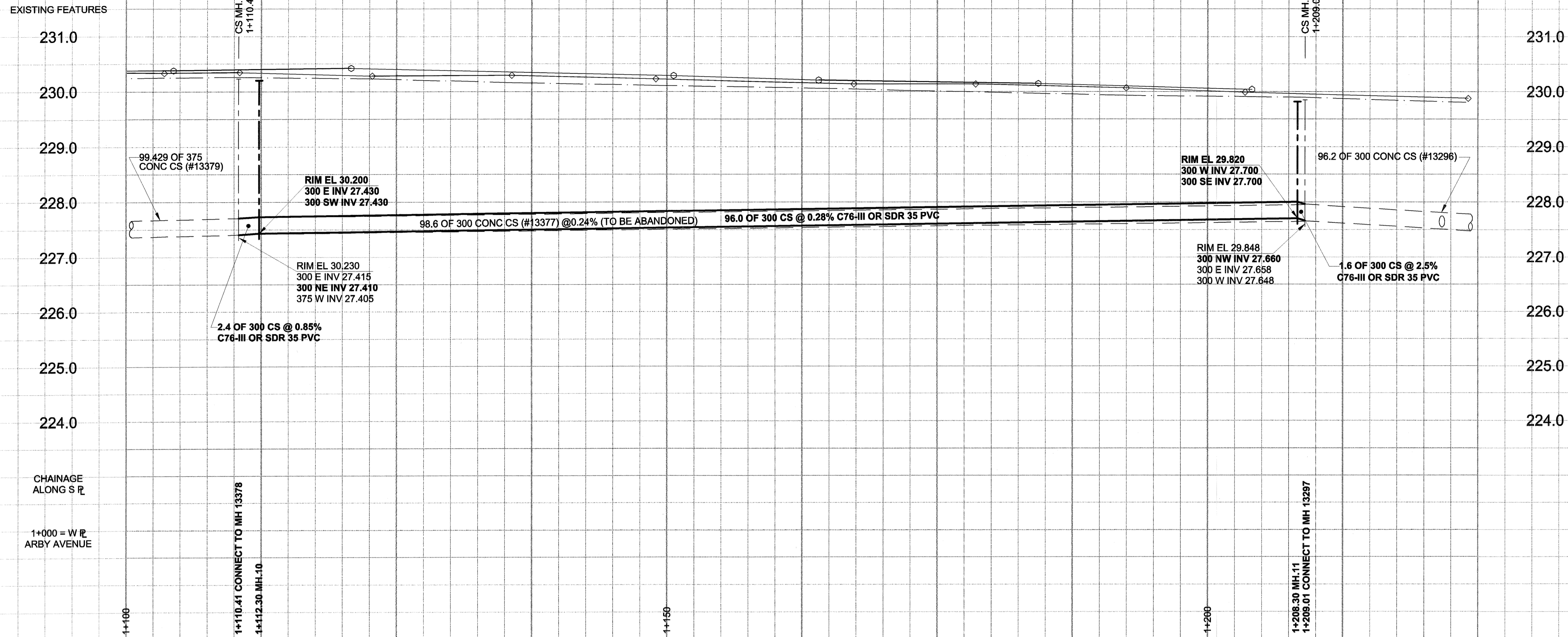


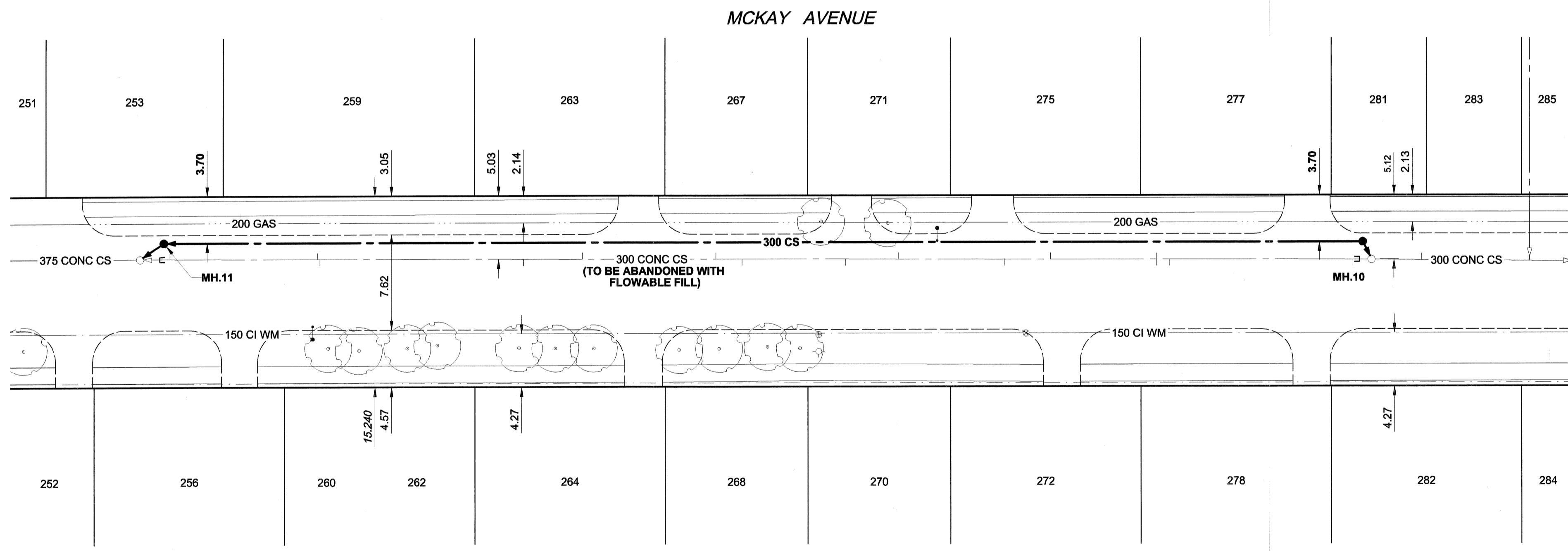
D SIZE 22" x 34" (559mm x 864mm)

PLOT: 05/10/14 2:12:50 PM

UMA FILE NAME: D265-195-03_02-C-0019_RX.dwg Saved By: kberard



WATER SERVICE INFORMATION			
ADDRESS	DISTANCE FROM PROPERTY	SHORT & LONG MEASUREMENT	REMARKS
251 MCKAY AV	2.44	WE HOUSE CORNER	
(RESIDENTIAL)	7.92	FROM HOUSE FRONT	
252 MCKAY AV	3.96	EWHL	
(RESIDENTIAL)	7.92		
253 MCKAY AV	3.05	WE HOUSE CORNER	
(RESIDENTIAL)	5.79	S HOUSE CORNER	
256 MCKAY AV	1.52	WE HOUSE CORNER	
(RESIDENTIAL)	4.88	N HOUSE CORNER	
259 MCKAY AV	2.13	WE HOUSE CORNER	
(RESIDENTIAL)	8.40	FROM HSE FRONT	
260 MCKAY AV	3.96	WEL	
(RESIDENTIAL)	7.77	FROM HOUSE FRONT	
262 MCKAY AV	3.96	WEL	
(RESIDENTIAL)	7.77	FROM HOUSE FRONT	
263 MCKAY AV	2.74	WE HOUSE CORNER	
(RESIDENTIAL)	5.18	S HOUSE FRONT	
267 MCKAY AV	2.59	EW HOUSE CORNER	
(RESIDENTIAL)	7.62	FROM HOUSE FRONT	
269 MCKAY AV	1.83	EW HOUSE CORNER	
(RESIDENTIAL)	7.77	N HOUSE FRONT	
270 MCKAY AV	1.07	EW HOUSE CORNER	
(RESIDENTIAL)	8.38	FROM HOUSE FRONT	
271 MCKAY AV	5.49	EW HOUSE CORNER	
(RESIDENTIAL)	7.52	OUT	
272 MCKAY AV	1.68	EW HOUSE CORNER	
(RESIDENTIAL)	4.72	FROM HOUSE FRONT	
275 MCKAY AV	1.83	WE HOUSE CORNER	
(RESIDENTIAL)	8.40	S OF HOUSE FRONT	
277 MCKAY AV	3.35	WE HOUSE CORNER	
(RESIDENTIAL)	6.10	FROM HOUSE FRONT	
278 MCKAY AV	2.59	EW HOUSE CORNER	
(RESIDENTIAL)	5.49	N HOUSE FRONT	
281 MCKAY AV	4.58	EW HOUSE CORNER	
(RESIDENTIAL)	7.77	FROM HOUSE FRONT	
283 MCKAY AV	6.37	WE HOUSE LINE	
(RESIDENTIAL)	7.32	FROM HOUSE FRONT	



SEWER JUNCTION INFORMATION*			
REF. MH	DIST FROM REF. MH	SIZE	CLOCK AT
13297	1.50	1500	10
13297	17.20	1500	10
13297	17.20	1500	02
13378	2.40	1500	09
13378	14.20	1500	09
13378	14.40	1500	02
13378	30.70	1500	02
13378	35.40	1500	10
13378	48.10	1500	11
13378	48.20	1500	03
13378	56.50	1500	02
13378	60.70	1500	11
13378	69.20	1500	02
13378	72.90	1500	10

*JUNCTION INFORMATION FROM VIDEO INSPECTION

SEWER SERVICE INFORMATION			
ADDRESS	PL. TIE (SHORT/LONG)	JUNCTION TIE	REMARKS
251 MCKAY AV			NO SEWER INFO FOUND
252 MCKAY AV			NO SEWER INFO FOUND
253 MCKAY AV			NO SEWER INFO FOUND
256 MCKAY AV			NO SEWER INFO FOUND
259 MCKAY AV			NO SEWER INFO FOUND
260 MCKAY AV			NO SEWER INFO FOUND
262 MCKAY AV			NO SEWER INFO FOUND
263 MCKAY AV			NO SEWER INFO FOUND
267 MCKAY AV			NO SEWER INFO FOUND
269 MCKAY AV			NO SEWER INFO FOUND
270 MCKAY AV			NO SEWER INFO FOUND
271 MCKAY AV			NO SEWER INFO FOUND
272 MCKAY AV			NO SEWER INFO FOUND
275 MCKAY AV			NO SEWER INFO FOUND
277 MCKAY AV			NO SEWER INFO FOUND
278 MCKAY AV			NO SEWER INFO FOUND
281 MCKAY AV			NO SEWER INFO FOUND
283 MCKAY AV			NO SEWER INFO FOUND
283 MCKAY AV	4.00' E OF 1ST MH W OF ROCH		SHARED WITH SERVICE 283 SEE #281

WARNING
 IF POWER EQUIPMENT OR EXPLOSIVES ARE TO BE USED FOR EXCAVATION ON THIS PROJECT, THE CONTRACTOR MUST:
 1) NOTIFY THE GAS COMPANY OF THE PROPOSED LOCATION OF EXCAVATION.
 2) TAKE PRECAUTION TO AVOID DAMAGE TO GAS COMPANY INSTALLATIONS.
 SEE PROVINCIAL REGULATION 140/92 FOR DETAILS

150 mm WM		300 mm LDS		250 mm WWS		CURB STOP		150 mm WM		300 mm LDS		250 mm WWS	
HYDRANT	REDUCER	LAND DRAINAGE SEWER	ANODE	MANHOLE	MTS	WATERMAIN	HYDRANT	HYDRANT	HYDRANT	LAND DRAINAGE SEWER	ANODE	MANHOLE	MTS
VALVE	COUPLING	WASTE WATER SEWER	HYDRO	CATCH BASIN	GAS	VALVE	VALVE	VALVE	VALVE	WASTE WATER SEWER	HYDRO	CATCH BASIN	GAS
PIPE ABANDONMENTS	SURVEY BAR		TESTHOLE	PIPE ABANDONMENTS	TESTHOLE	PIPE ABANDONMENTS	PIPE ABANDONMENTS	PIPE ABANDONMENTS	PIPE ABANDONMENTS	PIPE ABANDONMENTS	PIPE ABANDONMENTS	PIPE ABANDONMENTS	PIPE ABANDONMENTS
EXISTING	LEGEND - PLAN	NEW	LEGEND - PLAN	NEW	LEGEND - PLAN	NEW	LEGEND - PROFILE	NEW	LEGEND - PROFILE	NEW	LEGEND - PROFILE	NEW	LEGEND - PROFILE

LOCATION APPROVED
 UNDERGROUND STRUCTURES
 SUPR. U/G STRUCTURES DATE COMMITTEE
 NOTE:
 LOCATION OF UNDERGROUND STRUCTURES AS SHOWN ARE BASED ON THE BEST INFORMATION AVAILABLE. BUT NO GUARANTEE IS GIVEN THAT ALL EXISTING UTILITIES ARE SHOWN OR THAT THE GIVEN LOCATIONS ARE EXACT. CONFIRMATION OF EXISTENCE AND EXACT LOCATION OF ALL SERVICES MUST BE OBTAINED FROM THE INDIVIDUAL UTILITIES BEFORE PROCEEDING WITH CONSTRUCTION.

NO.	REVISIONS	Y/M/D	BY
0	ISSUED FOR CONSTRUCTION	05/10/14	KMB

UMA AECOM	
DESIGNED BY	ALD
CHECKED BY	[Signature]
DRAWN BY	KMB
APPROVED BY	[Signature]
HOR. SCALE	1:250
VERT. SCALE	1:50
DATE	05/10/14

PROFESSIONAL'S SEAL
 PROVINCE OF MANITOBA
 A. NAGY
 REGISTERED PROFESSIONAL ENGINEER
 CONSULTANT DRAWING NO. 19
 D265-195-03

THE CITY OF WINNIPEG
WATER AND WASTE DEPARTMENT
 2005 COMBINED SEWER RENEWALS
 BY EXTERNAL POINT REPAIRS AND REPLACEMENTS
 CONTRACT 17
 MCKAY AVENUE
 2ND MH E OF ARBY BAY
 TO 1ST MH E OF ARBY BAY

SHEET 19 OF 21
 CITY DRAWING NUMBER
05685
 REV 0

BID OPPORTUNITY NO. 598-2005