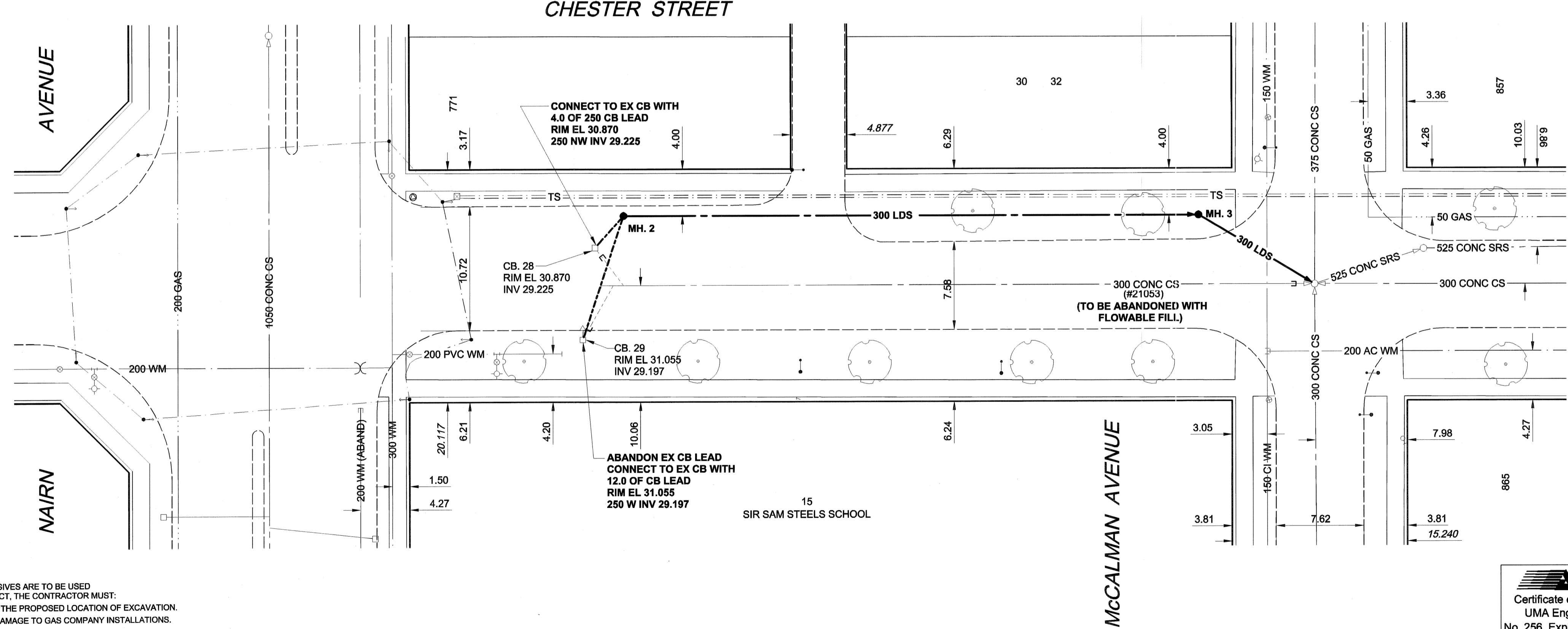
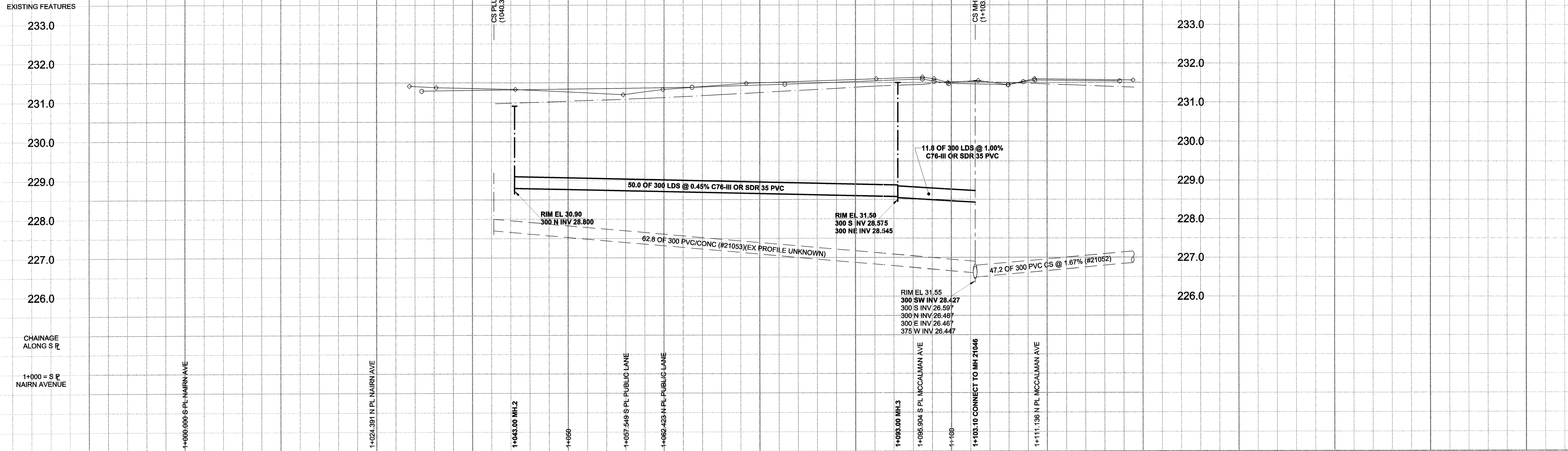


D SIZE 22" x 34" (559mm x 864mm)

PLOT: 05/10/14 1:57:52 PM

UMA FILE NAME: D265-195-03_02-C-0015_RX.dwg Saved By: kberard



WATER SERVICE INFORMATION			
ADDRESS	DISTANCE	SHORT & LONG PROPERTY MEASUREMENT	REMARKS
15 CHESTER ST		10.97 WE BL	
(COMMERCIAL)		1.83 OUT FROM BLDG	
30 CHESTER ST		1.52 EWL HOUSE	WM 4.11 TO PL
(RESIDENTIAL)		7.92 WWL HOUSE	

SEWER SERVICE INFORMATION			
ADDRESS	PL	TIE (SHORT/LONG)	JUNCTION TIE REMARKS
15 CHESTER ST			NO SEWER INFO FOUND
30 CHESTER ST			NO SEWER INFO FOUND

SEWER JUNCTION INFORMATION*			
REF. MH	DIST FROM REF. MH	SIZE	CLOCK AT
21046	60.10	2000	02
21046	61.00	2000	10

*JUNCTION INFORMATION FROM VIDEO INSPECTION

CONSTRUCTION NOTES

1. INSTALL NEW SEWER BY TRENCHLESS METHODS.
2. ALL SEWER & WATER SERVICES TO LOCATED IN THE FIELD BY THE CONTRACTOR.
3. SEWERS AND CB LEADS TO BE ABANDONED SHALL BE FILLED WITH CEMENT STABILIZED FLOWBLE FILL.

WARNING
 IF POWER EQUIPMENT OR EXPLOSIVES ARE TO BE USED FOR EXCAVATION ON THIS PROJECT, THE CONTRACTOR MUST:
 1) NOTIFY THE GAS COMPANY OF THE PROPOSED LOCATION OF EXCAVATION.
 2) TAKE PRECAUTION TO AVOID DAMAGE TO GAS COMPANY INSTALLATIONS.
 SEE PROVINCIAL REGULATION 140/92 FOR DETAILS

150 mm WM	WATERMAIN	150 mm WM	CURB STOP	150 mm WM	WATERMAIN	150 mm WM
	HYDRANT		REDUCER		HYDRANT	
	VALVE		COUPLING		VALVE	
	LAND DRAINAGE SEWER		ANODE		LAND DRAINAGE SEWER	
	WASTE WATER SEWER		HYDRO		WASTE WATER SEWER	
	MANHOLE		MTS		PAVEMENT CROWN	
	CATCH BASIN		GAS		N/W PROPERTY LINE	
	CURB INLET		TESTHOLE		S/E PROPERTY LINE	
	CULVERT		LAMP STANDARD		N/W GUTTER	
	PIPE ABANDONMENTS		TREE		S/E GUTTER	
	SURVEY BAR					
EXISTING	LEGEND - PLAN	NEW	LEGEND - PLAN	NEW	LEGEND - PROFILE	NEW

LOCATION APPROVED
 UNDERGROUND STRUCTURES

SUPR. U/G STRUCTURES DATE COMMITTEE

NOTE:
 LOCATION OF UNDERGROUND STRUCTURES AS SHOWN ARE BASED ON THE BEST INFORMATION AVAILABLE. BUT NO GUARANTEE IS GIVEN THAT ALL EXISTING UTILITIES ARE SHOWN OR THAT THE GIVEN LOCATIONS ARE EXACT. CONFIRMATION OF EXISTENCE AND EXACT LOCATION OF ALL SERVICES MUST BE OBTAINED FROM THE INDIVIDUAL UTILITIES BEFORE PROCEEDING WITH CONSTRUCTION.

BM 28-021 ELEV 231.374m	N.W. Cor. Nairn Ave. & Chester St., bolt in 4.6 m Conc. pile, 2.4 m E. of W.L. of Chester St. & 0.3 m N. of N.L. of Nairn Ave.
NO.	REVISIONS
0	ISSUED FOR CONSTRUCTION 05/10/14 KMB
	DATE 05/10/14

UMA AECOM	
© 2005 UMA ENGINEERING LTD. ALL RIGHTS RESERVED.	
DESIGNED BY ALD / MJR	CHECKED BY <i>[Signature]</i>
DRAWN BY KMB	APPROVED BY <i>[Signature]</i>
HOR. SCALE 1:250	RELEASED FOR CONSTRUCTION <i>[Signature]</i>
VERT. SCALE 1:50	DATE 05/10/14

APGM
 Certificate of Authorization
 UMA Engineering Ltd.
 No. 256 Expiry: April 30, 2006

PROFESSIONAL'S SEAL
 PROVINCE OF MANITOBA
 A. NAGY
 REGISTERED PROFESSIONAL ENGINEER
 Oct 14, 2005
 CONSULTANT DRAWING NO. 15
 D265-195-03

THE CITY OF WINNIPEG
 WATER AND WASTE DEPARTMENT

2005 COMBINED SEWER RENEWALS
 BY EXTERNAL POINT REPAIRS AND REPLACEMENTS
 CONTRACT 17
 CHESTER STREET
 1ST MH S OF MCCALMAN AVENUE
 TO MH AT MCCALMAN AVENUE

SHEET 15 OF 21
 CITY DRAWING NUMBER
05681
 REV 0

BID OPPORTUNITY NO. 598-2005