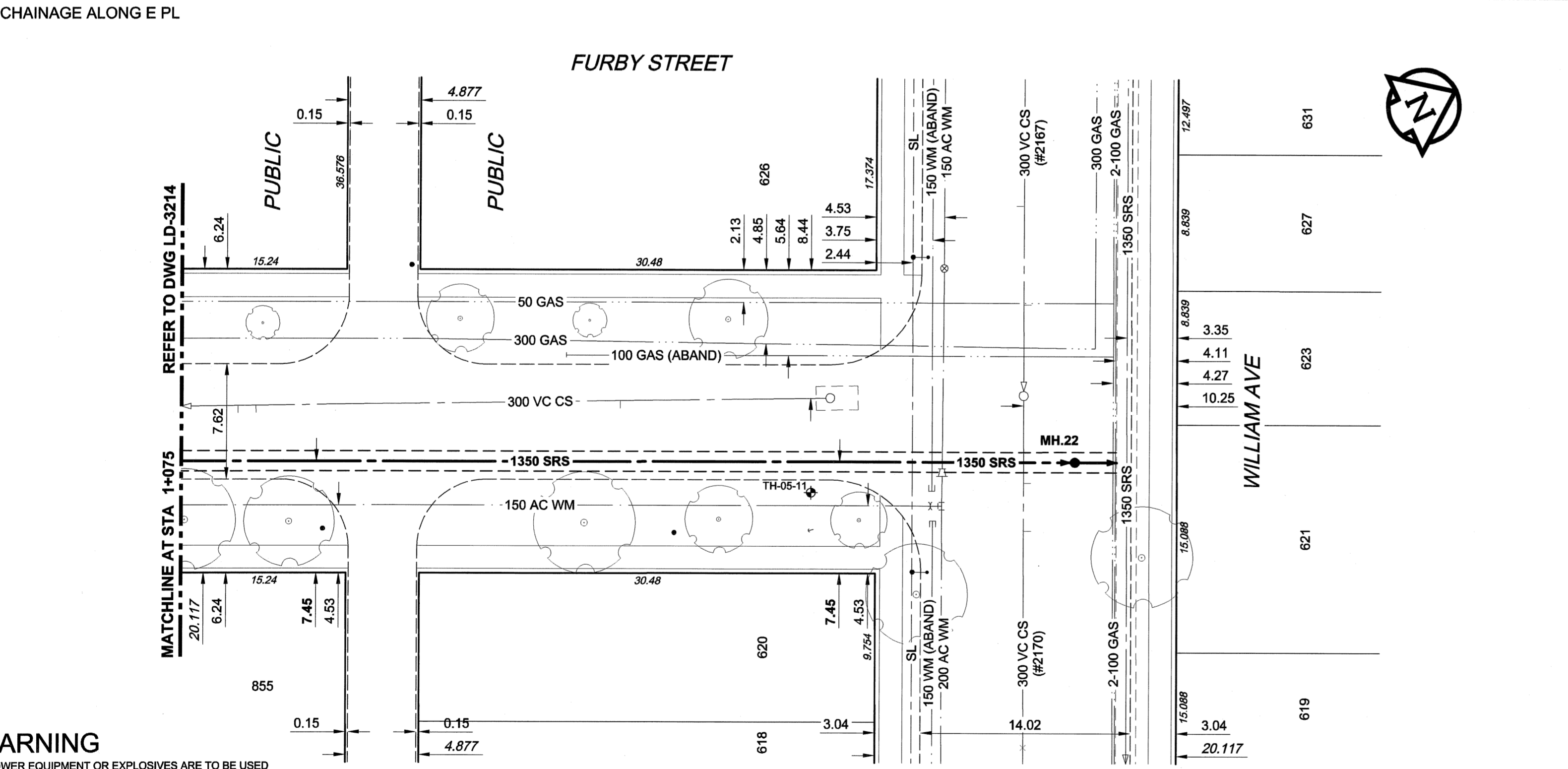
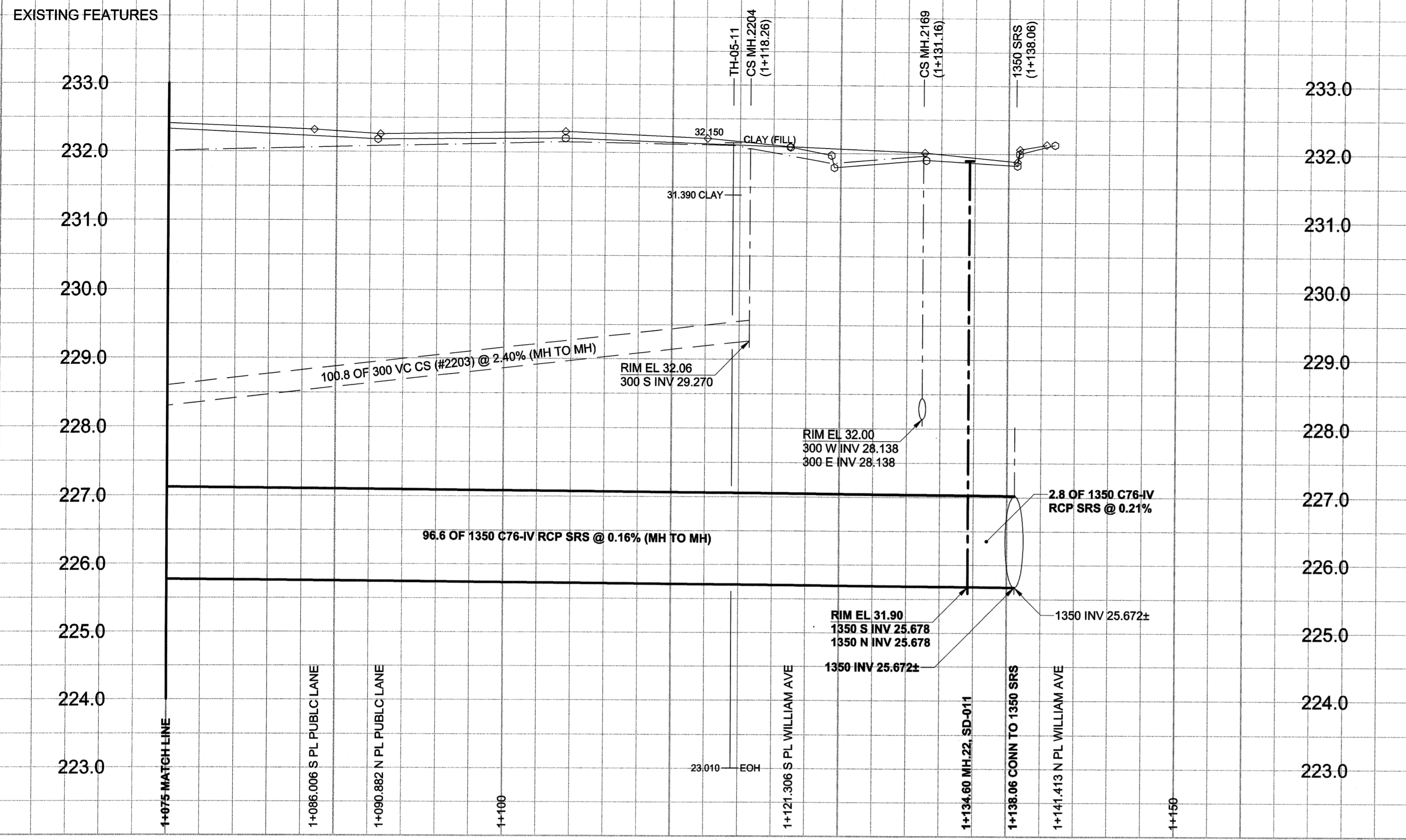


D SIZE 22" x 34" (559mm x 864mm)

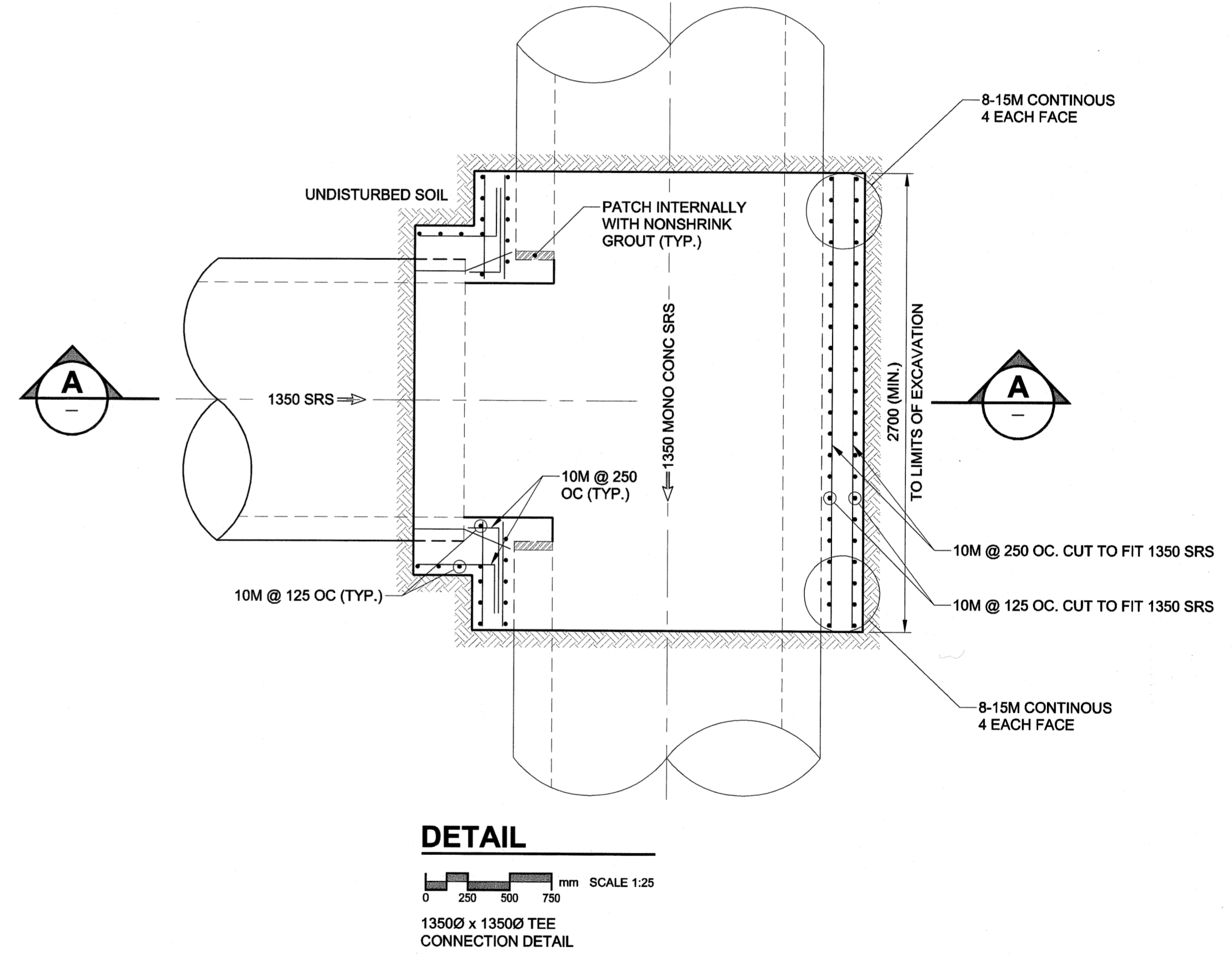
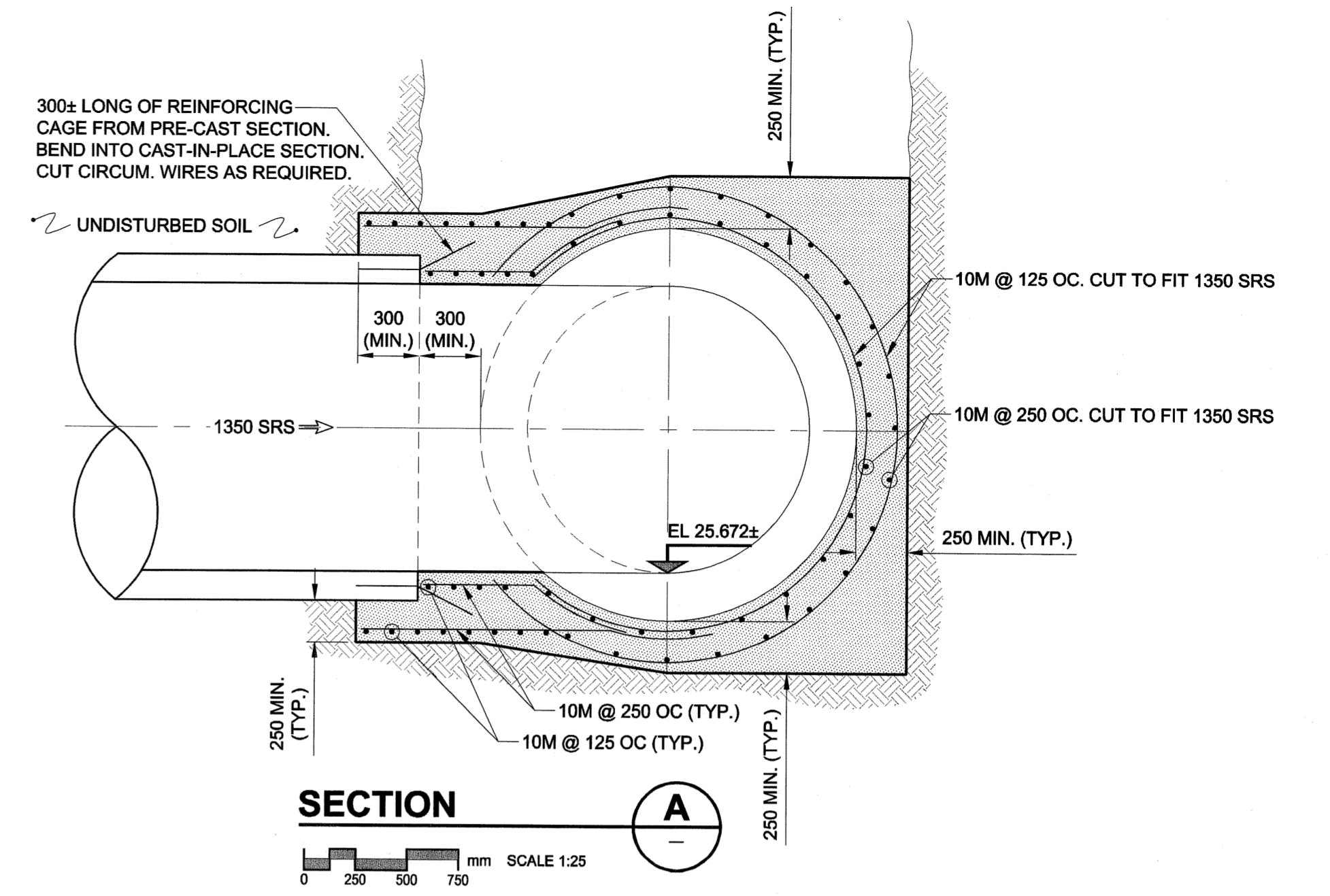
PLOT: 05/11/01 11:01:03 AM

UMA FILE NAME: D265-177-02_02-C-1012_RX.dwg Saved By: aleippi



WARNING
 IF POWER EQUIPMENT OR EXPLOSIVES ARE TO BE USED FOR EXCAVATION ON THIS PROJECT, THE CONTRACTOR MUST:
 1) NOTIFY THE GAS COMPANY OF THE PROPOSED LOCATION OF EXCAVATION.
 2) TAKE PRECAUTION TO AVOID DAMAGE TO GAS COMPANY INSTALLATIONS.
 SEE PROVINCIAL REGULATION 140/92 FOR DETAILS

FOR FURTHER INFO SEE DWG LD-3216



- CONSTRUCTION NOTES:**
- FOR DETAILED TEST HOLE INFORMATION, SEE SPECIFICATION.
 - THE LOCATION OF ALL SERVICES IS TO BE CONFIRMED IN THE FIELD.
 - INSTALL NEW SEWERS AND CATCHBASIN LEADS BY TRENCHLESS METHODS WHEREVER POSSIBLE.
 - RENEW/REHABILITATE CATCHBASINS & RENEW CATCHBASIN LEADS WHERE NOTED.

EXISTING	LEGEND - PLAN	NEW	EXISTING	LEGEND - PROFILE	NEW
150 mm WM	WATERMAIN	150 mm WM	CURB STOP	150 mm WM	WATERMAIN
300 mm LDS	LAND DRAINAGE SEWER	300 mm LDS	REDUCER	300 mm LDS	LAND DRAINAGE SEWER
250 mm WWS	WASTE WATER SEWER	250 mm WWS	COUPLING	250 mm WWS	WASTE WATER SEWER
MANHOLE	MANHOLE	MTS	ANODE	PAVEMENT CROWN	PAVEMENT CROWN
CATCH BASIN	CATCH BASIN	GAS	HYDRO	N/W PROPERTY LINE	N/W PROPERTY LINE
CURB INLET	CURB INLET	TESTHOLE	MTS	S/E PROPERTY LINE	S/E PROPERTY LINE
CULVERT	CULVERT	LAMP STANDARD	GAS	N/W GUTTER	N/W GUTTER
PIPE ABANDONMENTS	PIPE ABANDONMENTS	TREE	TESTHOLE	S/E GUTTER	S/E GUTTER
SURVEY BAR	SURVEY BAR		LAMP STANDARD		
			TREE		

LOCATION APPROVED
 UNDERGROUND STRUCTURES

SUPR. UIG STRUCTURES DATE COMMITTEE

NOTE:
 LOCATION OF UNDERGROUND STRUCTURES AS SHOWN ARE BASED ON THE BEST INFORMATION AVAILABLE. BUT NO GUARANTEE IS GIVEN THAT ALL EXISTING UTILITIES ARE SHOWN OR THAT THE GIVEN LOCATIONS ARE EXACT. CONFIRMATION OF EXISTENCE AND EXACT LOCATION OF ALL SERVICES MUST BE OBTAINED FROM THE INDIVIDUAL UTILITIES BEFORE PROCEEDING WITH CONSTRUCTION.

BM 36-044 N side Notre Dame Ave. Blv'n. Sherbrook St. & Pease St. Tbl. In W'y. wing wall on production Sty. of W. wall of No. 677 Notre Dame Ave. (Health Sciences Power House), 0.2m E. & 0.25m below precast stone finish of wing wall.

ELEV 232.783m

NO.	REVISIONS	DATE	BY
0	ISSUED FOR CONSTRUCTION	05/11/03	ADL
		YYMMDD	

METRIC
 WHOLE NUMBERS INDICATE MILLIMETRES
 DECIMALIZED NUMBERS INDICATE METRES

UMA | AECOM

© 2005 UMA ENGINEERING LTD. ALL RIGHTS RESERVED.

DESIGNED BY GEB
 CHECKED BY [Signature]
 DRAWN BY ADL
 APPROVED BY [Signature]
 HOR. SCALE 1:250
 VERT. SCALE 1:50
 DATE 05/11/03
 RELEASED FOR CONSTRUCTION
 DATE 05/11/03

PROFESSIONAL'S SEAL

PROVINCE OF MANITOBA
 REGISTERED PROFESSIONAL ENGINEER
 A. NAGY
 Nov. 9, 2005

CONSULTANT DRAWING NO. 12
 D265-177-02

THE CITY OF WINNIPEG
 WATER AND WASTE DEPARTMENT

ALEXANDER/BANNATYNE
 COMBINED SEWER RELIEF
 CONTRACT 2B
 FURBY STREET
 55m NORTH OF BANNATYNE AVENUE
 TO WILLIAM AVENUE

SHEET 12 OF 17
 CITY DRAWING NUMBER
 LD-3215
 REV 0

BID OPPORTUNITY NO. 584-2005