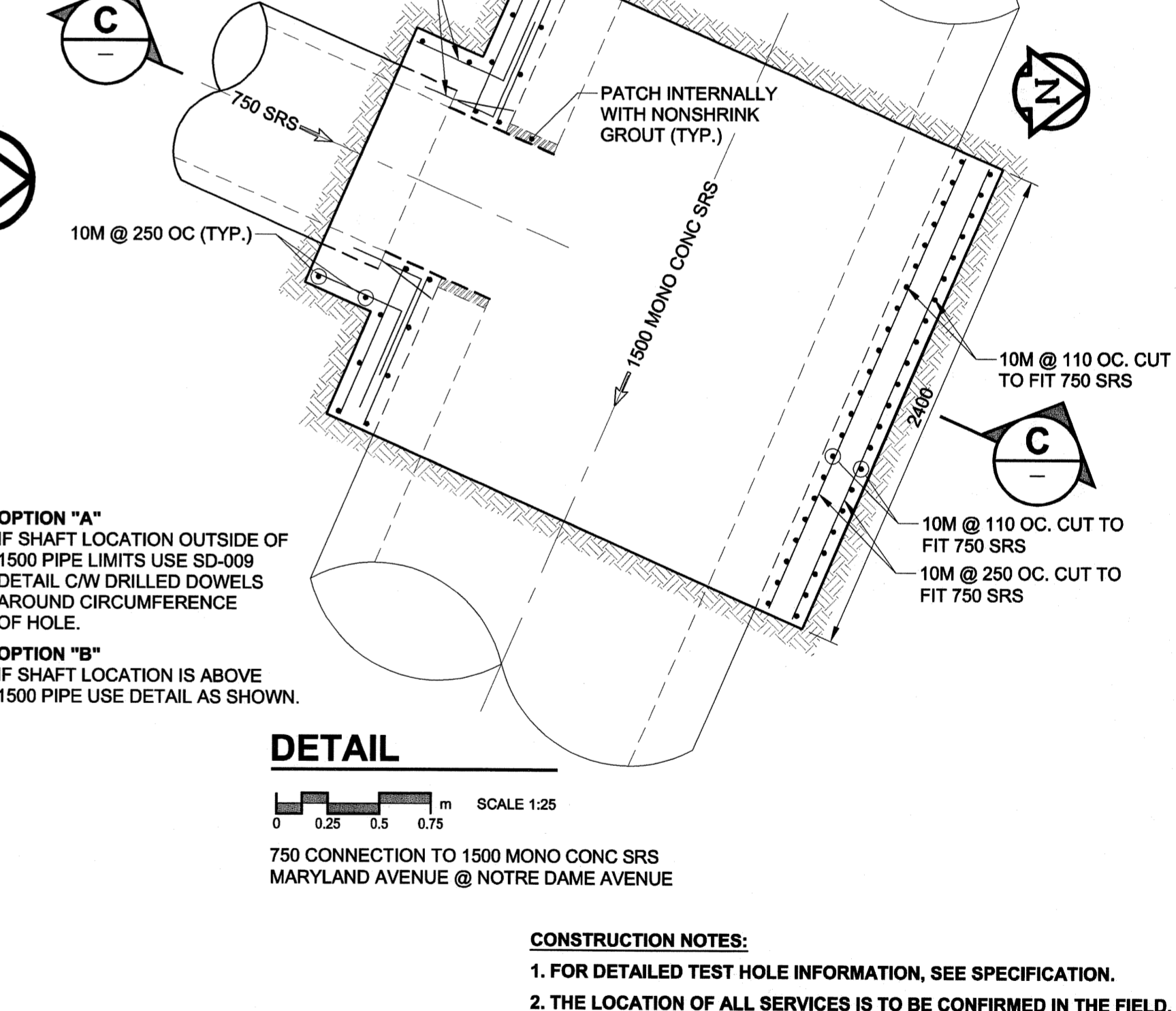
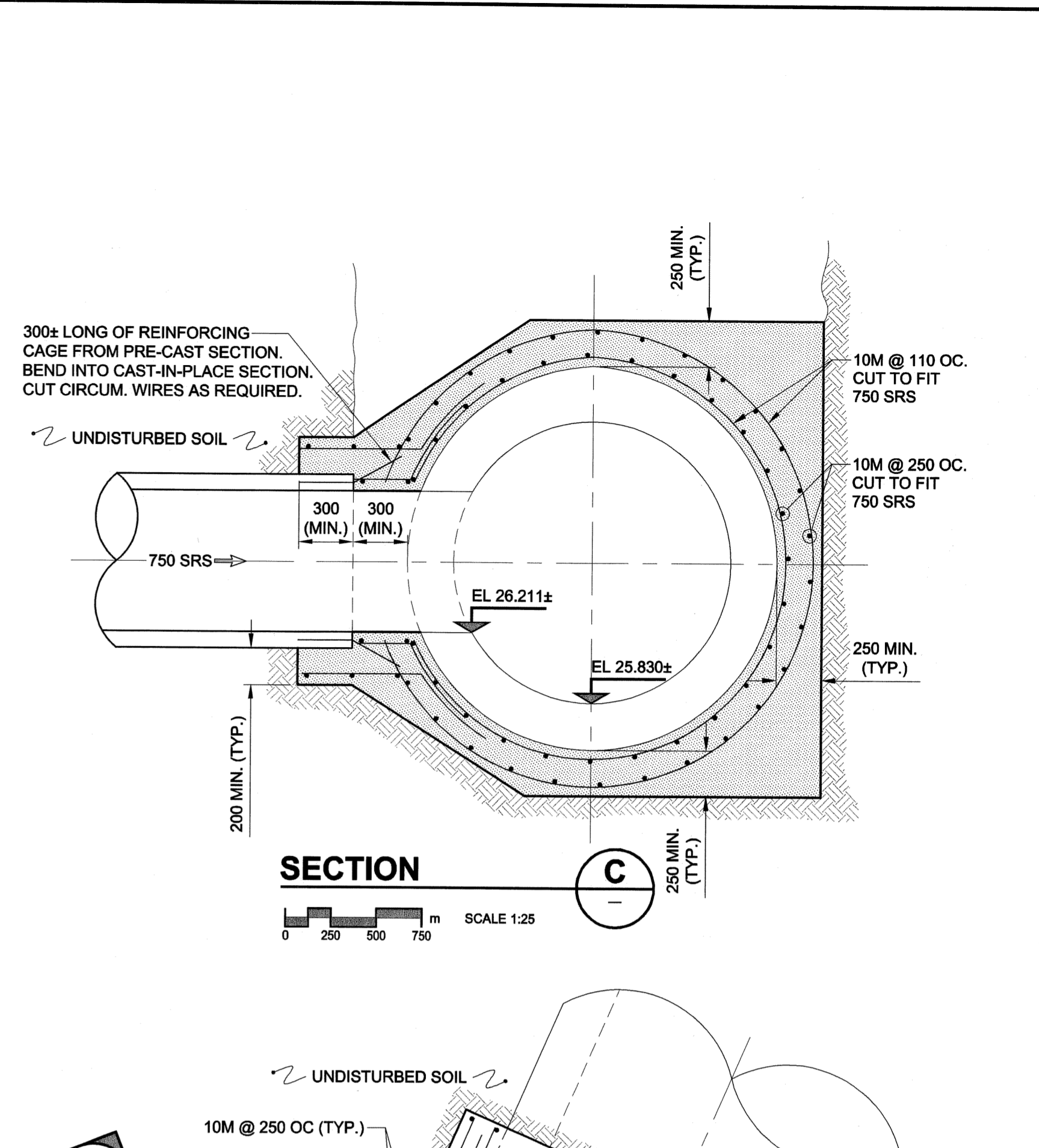
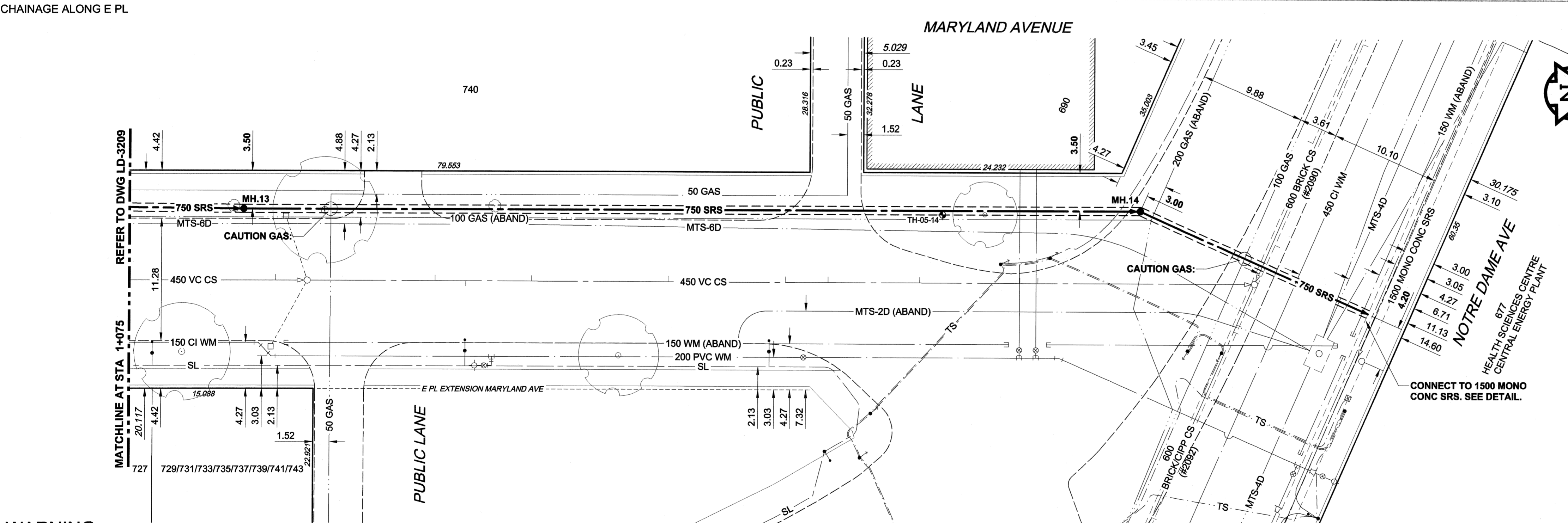
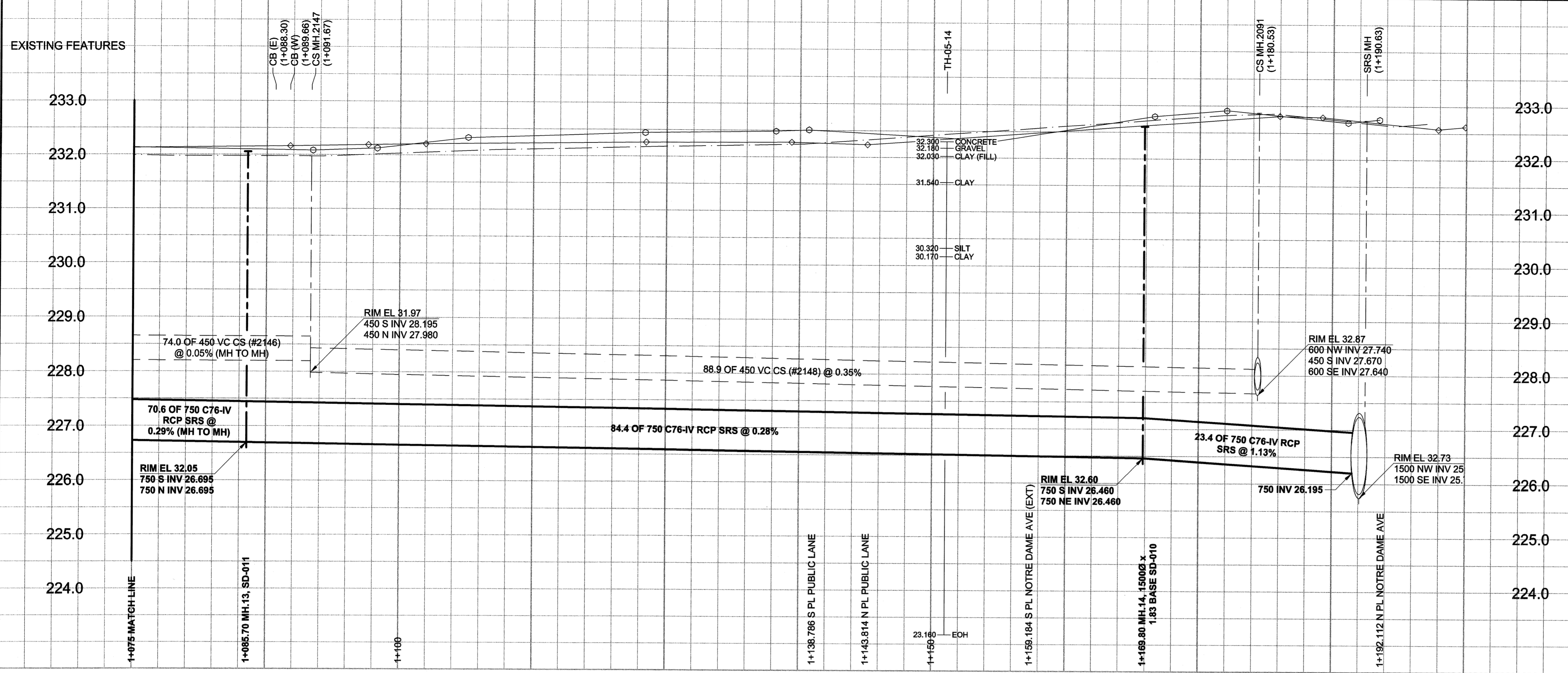


D SIZE 22" x 34" 650mm x 864mm
 PLOT: 05/11/02 3:24:01 PM
 UMA FILE NAME: D265-177-02_02-C-1007_RX.dwg Saved By: atleippl



WARNING
 IF POWER EQUIPMENT OR EXPLOSIVES ARE TO BE USED FOR EXCAVATION ON THIS PROJECT, THE CONTRACTOR MUST:
 1) NOTIFY THE GAS COMPANY OF THE PROPOSED LOCATION OF EXCAVATION.
 2) TAKE PRECAUTION TO AVOID DAMAGE TO GAS COMPANY INSTALLATIONS.
 SEE PROVINCIAL REGULATION 140/92 FOR DETAILS

150 mm WM		300 mm LDS		250 mm WWS		150 mm WM		300 mm LDS		250 mm WWS	
○	HYDRANT	○	LAND DRAINAGE SEWER	○	WASTE WATER SEWER	○	HYDRANT	○	LAND DRAINAGE SEWER	○	WASTE WATER SEWER
●	VALVE	○	MANHOLE	○	CATCH BASIN	○	REDUCER	○	VALVE	○	MANHOLE
○	PIPE ABANDONMENTS	○	WASTE WATER SEWER	○	WASTE WATER SEWER	○	COUPLING	○	ANODE	○	WASTE WATER SEWER
○	PIPE ABANDONMENTS	○	WASTE WATER SEWER	○	WASTE WATER SEWER	○	HYDRO	○	HYDRO	○	WASTE WATER SEWER
○	PIPE ABANDONMENTS	○	WASTE WATER SEWER	○	WASTE WATER SEWER	○	MTS	○	MTS	○	WASTE WATER SEWER
○	PIPE ABANDONMENTS	○	WASTE WATER SEWER	○	WASTE WATER SEWER	○	GAS	○	GAS	○	WASTE WATER SEWER
○	PIPE ABANDONMENTS	○	WASTE WATER SEWER	○	WASTE WATER SEWER	○	TESTHOLE	○	TESTHOLE	○	WASTE WATER SEWER
○	PIPE ABANDONMENTS	○	WASTE WATER SEWER	○	WASTE WATER SEWER	○	LAMP STANDARD	○	LAMP STANDARD	○	WASTE WATER SEWER
○	PIPE ABANDONMENTS	○	WASTE WATER SEWER	○	WASTE WATER SEWER	○	TREE	○	TREE	○	WASTE WATER SEWER
○	PIPE ABANDONMENTS	○	WASTE WATER SEWER	○	WASTE WATER SEWER	○	TREE	○	TREE	○	WASTE WATER SEWER

LOCATION APPROVED
 UNDERGROUND STRUCTURES
 SUPR. U/G STRUCTURES COMMITTEE DATE
 NOTE: LOCATION OF UNDERGROUND STRUCTURES AS SHOWN ARE BASED ON THE BEST INFORMATION AVAILABLE. BUT NO GUARANTEE IS GIVEN THAT ALL EXISTING UTILITIES ARE SHOWN OR THAT THE GIVEN LOCATIONS ARE EXACT. CONFIRMATION OF EXISTENCE AND EXACT LOCATION OF ALL SERVICES MUST BE OBTAINED FROM THE INDIVIDUAL UTILITIES BEFORE PROCEEDING WITH CONSTRUCTION.

BM 36-044 N. side Notre Dame Ave. B/w/h. Sherbrook St. & Pearl St.
 T&E. in W. Wing well on production S/S. of W. wall of No. 677 Notre Dame Ave. (Health Sciences Power House), 0.2m E. & 0.25m below precast stone finish of wing wall.

METRIC
 WHOLE NUMBERS INDICATE MILLIMETRES
 DECIMALIZED NUMBERS INDICATE METRES

UMA | AECOM
 Certificate of Authorization
 UMA Engineering Ltd.
 No. 256 Expiry: April 30, 2006

PROFESSIONAL'S SEAL
 PROVINCE OF MANITOBA
 REGISTERED PROFESSIONAL ENGINEER
 A. NAGY
 Nov. 3, 2005
 CONSULTANT DRAWING NO. 17
 D265-177-02

BID OPPORTUNITY NO. 584-2005

THE CITY OF WINNIPEG
 WATER AND WASTE DEPARTMENT

ALEXANDER/BANNATYNE
 COMBINED SEWER RELIEF
 CONTRACT 2B
 MARYLAND AVENUE
 55m NORTH OF WELLINGTON AVENUE
 TO NOTRE DAME AVENUE

SHEET 7 OF 17
 CITY DRAWING NUMBER
 LD-3210
 REV 0