

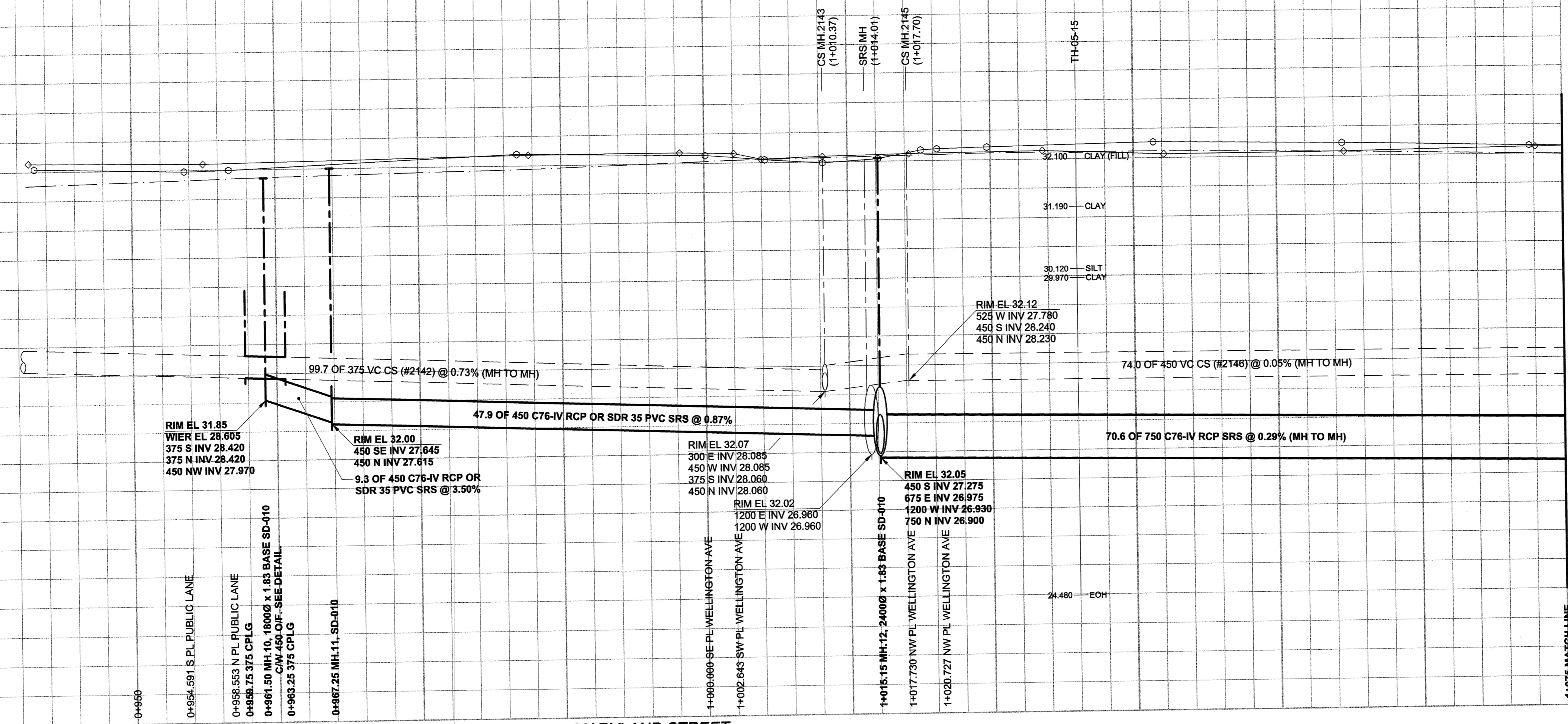
D SIZE 22" x 34" (564mm x 864mm)

PLOT: 05/11/01 11:02:26 AM

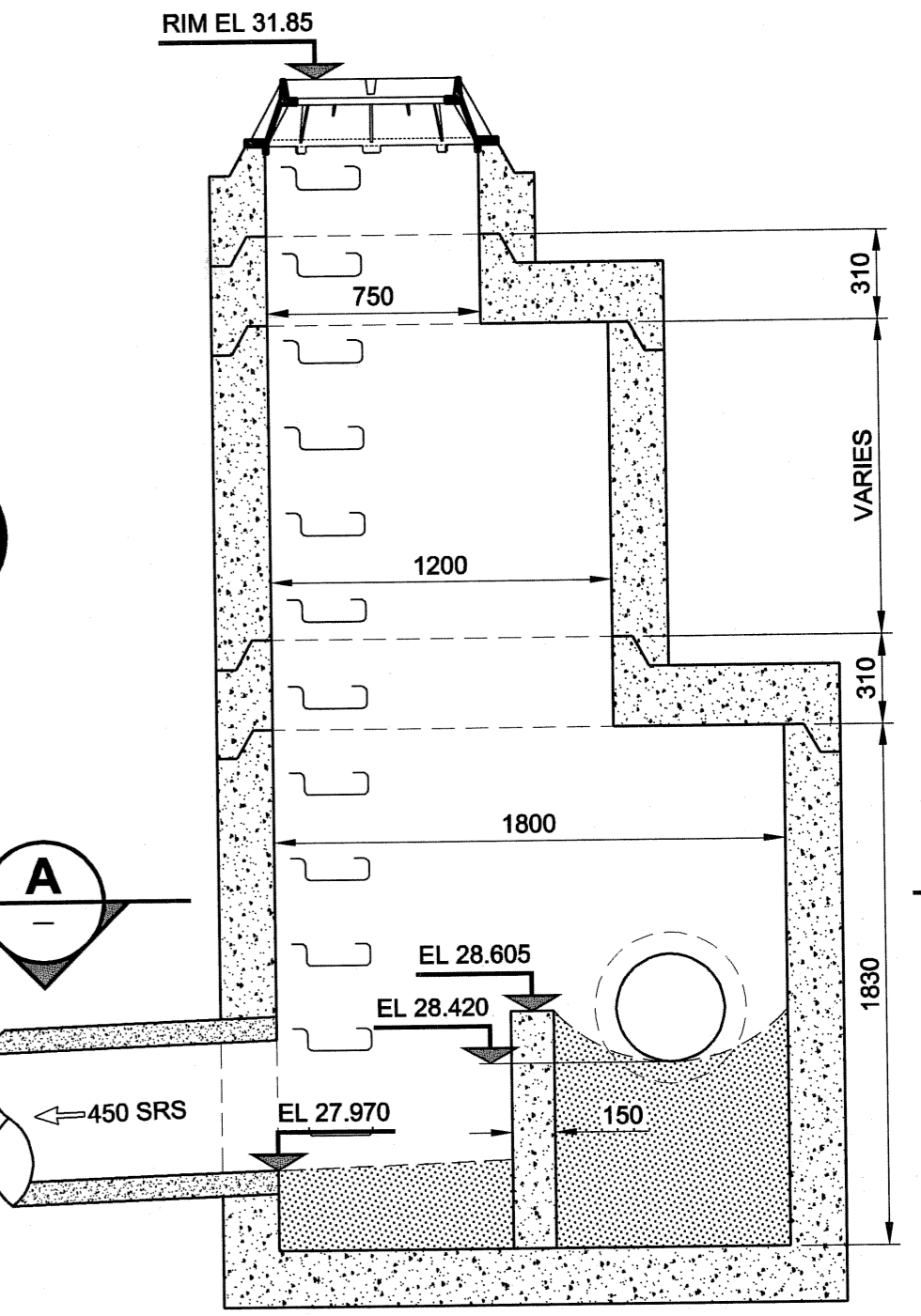
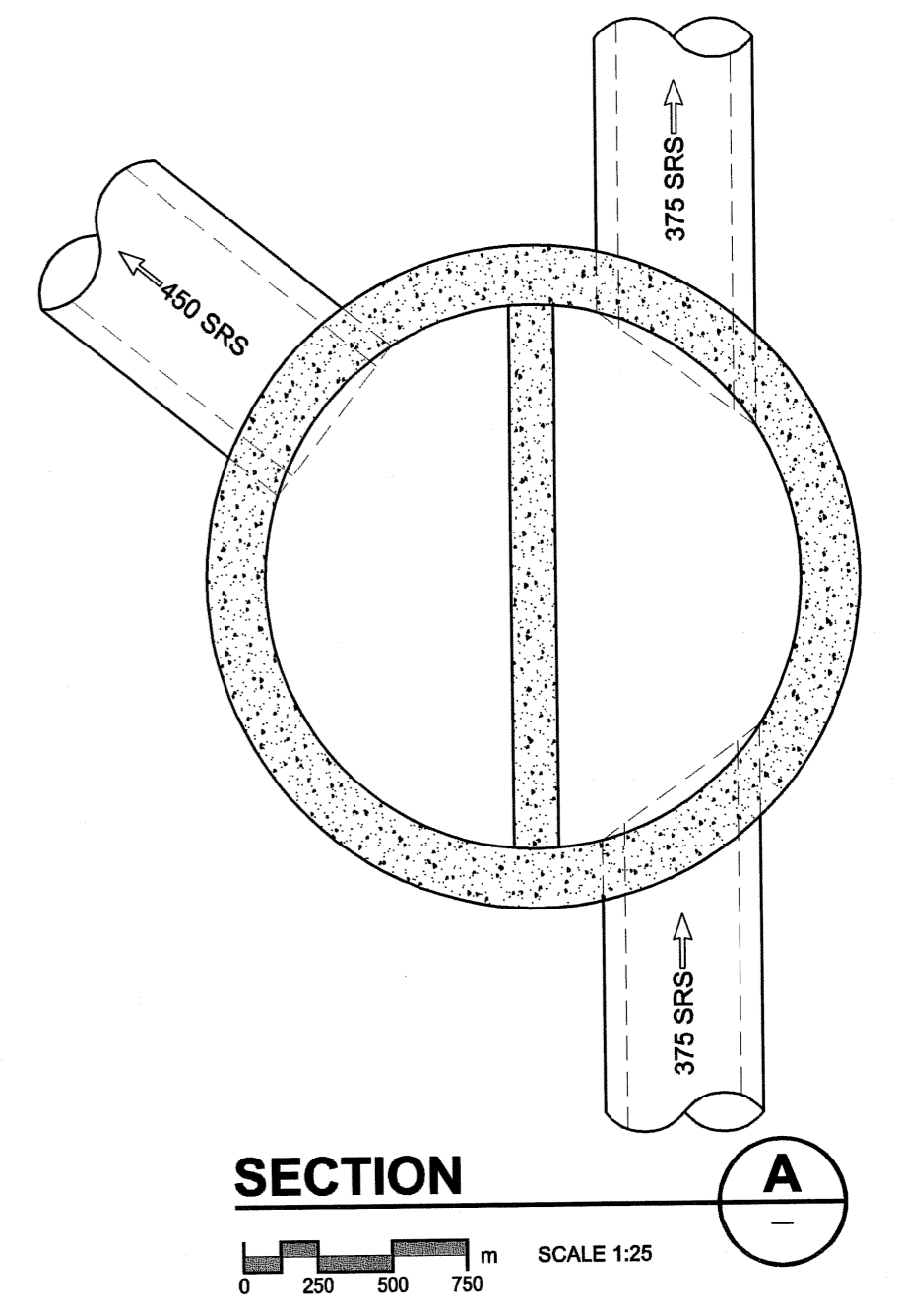
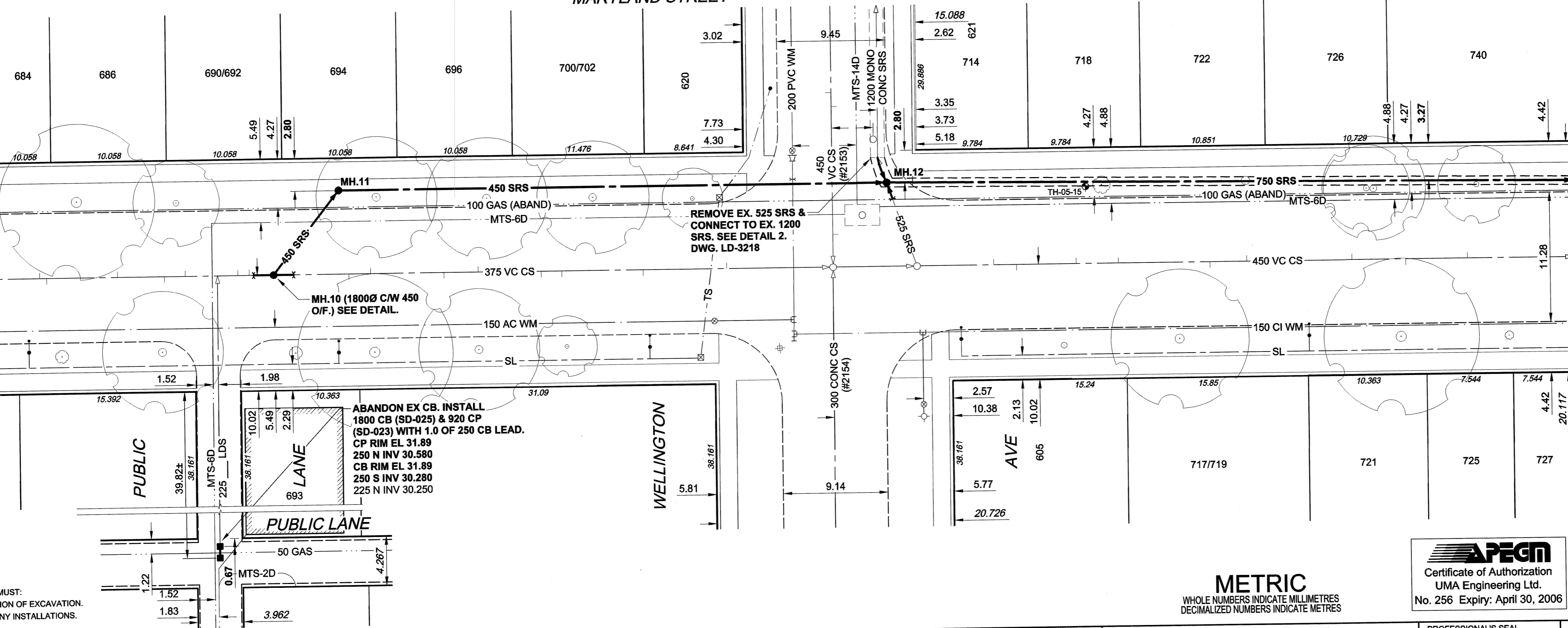
UMA FILE NAME: D265-177-02 02-C-1006 RX.dwg Saved By: aleppil

EXISTING FEATURES

233.0
232.0
231.0
230.0
229.0
228.0
227.0
226.0
225.0
224.0



CHAINAGE ALONG E PL



WARNING
IF POWER EQUIPMENT OR EXPLOSIVES ARE TO BE USED FOR EXCAVATION ON THIS PROJECT, THE CONTRACTOR MUST:
1) NOTIFY THE GAS COMPANY OF THE PROPOSED LOCATION OF EXCAVATION.
2) TAKE PRECAUTION TO AVOID DAMAGE TO GAS COMPANY INSTALLATIONS.
SEE PROVINCIAL REGULATION 140/92 FOR DETAILS

150 mm WM	WATERMAIN	150 mm WM	CURB STOP	150 mm WM	WATERMAIN	150 mm WM	LOCATION APPROVED
+	HYDRANT	+	REDUCER	+	HYDRANT	+	UNDERGROUND STRUCTURES
+	VALVE	+	COUPLING	+	VALVE	+	DATE
+	LAND DRAINAGE SEWER	+	ANODE	+	LAND DRAINAGE SEWER	+	SUPR. U/G STRUCTURES
+	WASTE WATER SEWER	+	HYDRO	+	WASTE WATER SEWER	+	DATE
+	MANHOLE	+	MTS	+	PAVEMENT CROWN	+	NOTE:
+	CATCH BASIN	+	GAS	+	N/W PROPERTY LINE	+	LOCATION OF UNDERGROUND STRUCTURES AS SHOWN ARE BASED ON THE BEST INFORMATION AVAILABLE. BUT NO GUARANTEE IS GIVEN THAT ALL EXISTING UTILITIES ARE SHOWN OR THAT THE GIVEN LOCATIONS ARE EXACT. CONFIRMATION OF EXISTENCE AND EXACT LOCATION OF ALL SERVICES MUST BE OBTAINED FROM THE INDIVIDUAL UTILITIES BEFORE PROCEEDING WITH CONSTRUCTION.
+	CURB INLET	+	TESTHOLE	+	S/E PROPERTY LINE	+	
+	CULVERT	+	LAMP STANDARD	+	N/W GUTTER	+	
+	PIPE ABANDONMENTS	+	TREE	+	S/E GUTTER	+	
+	SURVEY BAR	+		+		+	
+	EXISTING	+	LEGEND - PLAN	+	LEGEND - PROFILE	+	

300 mm LDS	LAND DRAINAGE SEWER	300 mm LDS	WATERMAIN	300 mm LDS	WATERMAIN
+	WASTE WATER SEWER	+	HYDRANT	+	HYDRANT
+	MANHOLE	+	VALVE	+	VALVE
+	CATCH BASIN	+	LAND DRAINAGE SEWER	+	LAND DRAINAGE SEWER
+	CURB INLET	+	WASTE WATER SEWER	+	WASTE WATER SEWER
+	CULVERT	+	PAVEMENT CROWN	+	PAVEMENT CROWN
+	PIPE ABANDONMENTS	+	N/W PROPERTY LINE	+	N/W PROPERTY LINE
+	SURVEY BAR	+	S/E PROPERTY LINE	+	S/E PROPERTY LINE
+	EXISTING	+	N/W GUTTER	+	N/W GUTTER
+	LEGEND - PLAN	+	S/E GUTTER	+	S/E GUTTER
+	LEGEND - PROFILE	+		+	

250 mm WWS	WASTE WATER SEWER	250 mm WWS	WATERMAIN	250 mm WWS	WATERMAIN
+	MANHOLE	+	HYDRANT	+	HYDRANT
+	CATCH BASIN	+	VALVE	+	VALVE
+	CURB INLET	+	LAND DRAINAGE SEWER	+	LAND DRAINAGE SEWER
+	CULVERT	+	WASTE WATER SEWER	+	WASTE WATER SEWER
+	PIPE ABANDONMENTS	+	PAVEMENT CROWN	+	PAVEMENT CROWN
+	SURVEY BAR	+	N/W PROPERTY LINE	+	N/W PROPERTY LINE
+	EXISTING	+	S/E PROPERTY LINE	+	S/E PROPERTY LINE
+	LEGEND - PLAN	+	N/W GUTTER	+	N/W GUTTER
+	LEGEND - PROFILE	+	S/E GUTTER	+	S/E GUTTER

METRIC
WHOLE NUMBERS INDICATE MILLIMETRES
DECIMALIZED NUMBERS INDICATE METRES

APECM
Certificate of Authorization
UMA Engineering Ltd.
No. 256 Expiry: April 30, 2006

PROFESSIONAL'S SEAL
PROVINCE OF MANITOBA
REGISTERED PROFESSIONAL ENGINEER
A. NAGY
Nov. 3, 2005
CONSULTANT DRAWING NO. 6
D265-177-02

THE CITY OF WINNIPEG
WATER AND WASTE DEPARTMENT

ALEXANDER/BANNATYNE
COMBINED SEWER RELIEF
CONTRACT 2B
MARYLAND STREET
300m NORTH OF SARGENT AVENUE
TO 85m SOUTH OF NOTRE DAME AVENUE

SHEET 6 OF 17
CITY DRAWING NUMBER
LD-3209
REV 0

BID OPPORTUNITY NO. 584-2005

- CONSTRUCTION NOTES:**
- FOR DETAILED TEST HOLE INFORMATION, SEE SPECIFICATION.
 - THE LOCATION OF ALL SERVICES IS TO BE CONFIRMED IN THE FIELD.
 - INSTALL NEW SEWERS AND CATCHBASIN LEADS BY TRENCHLESS METHODS WHEREVER POSSIBLE.
 - RENEW/REHABILITATE CATCHBASINS & RENEW CATCHBASIN LEADS WHERE NOTED.