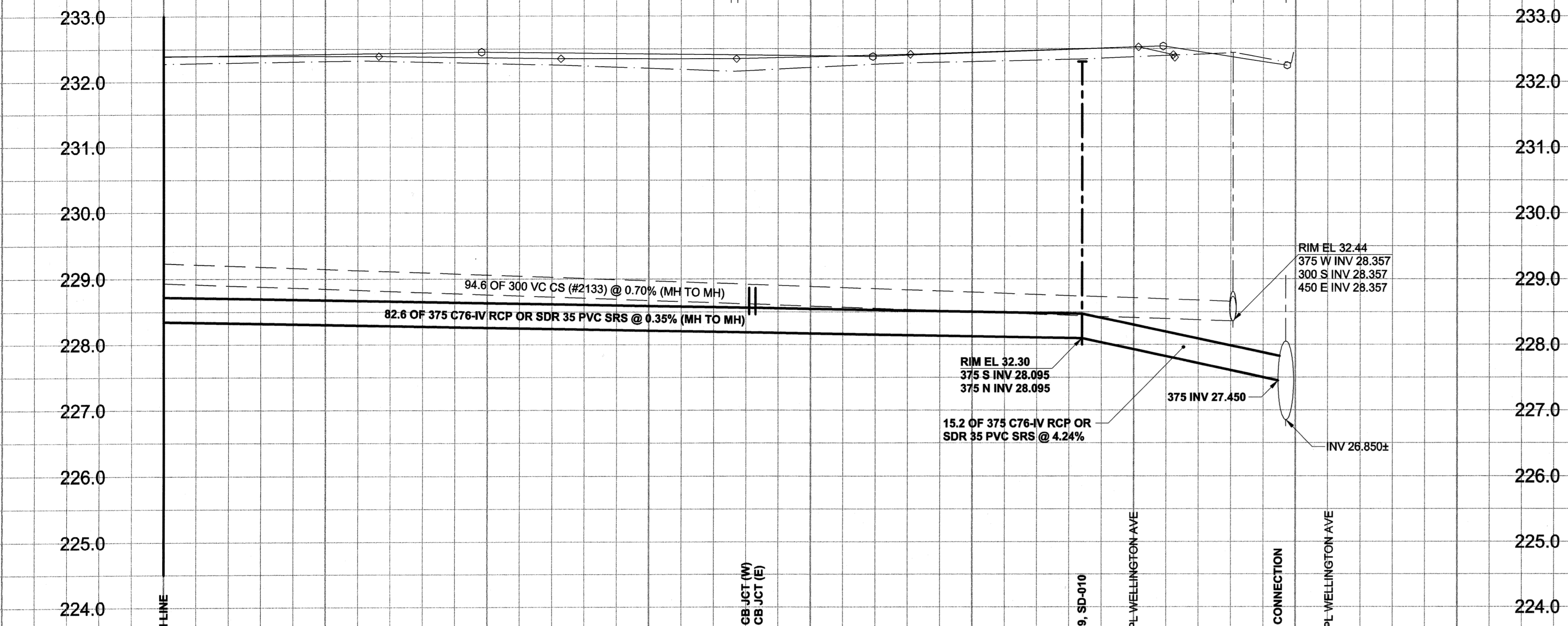


D SIZE 22" x 34" (569mm x 864mm)

PLOT: 05/11/01 11:02:40 AM

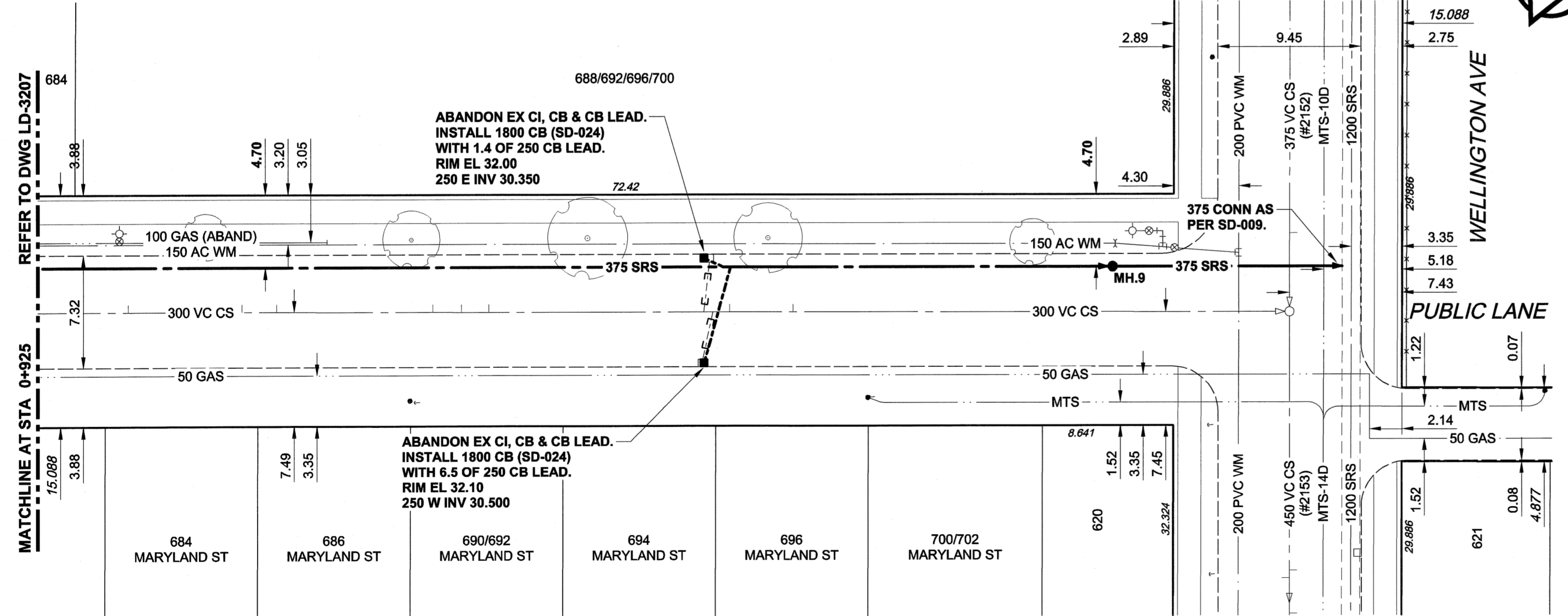
UMA FILE NAME: D265-177-02\_02-C-1005\_RX.dwg Saved By: aleppj

EXISTING FEATURES



CHAINAGE ALONG E PL

McGEE STREET



**WARNING**  
 IF POWER EQUIPMENT OR EXPLOSIVES ARE TO BE USED FOR EXCAVATION ON THIS PROJECT, THE CONTRACTOR MUST:  
 1) NOTIFY THE GAS COMPANY OF THE PROPOSED LOCATION OF EXCAVATION.  
 2) TAKE PRECAUTION TO AVOID DAMAGE TO GAS COMPANY INSTALLATIONS.  
 SEE PROVINCIAL REGULATION 140/92 FOR DETAILS

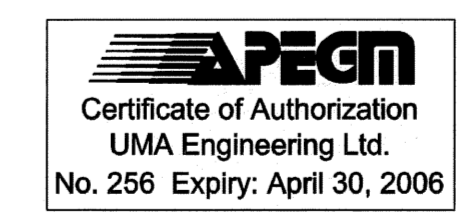
- CONSTRUCTION NOTES:**
1. FOR DETAILED TEST HOLE INFORMATION, SEE SPECIFICATION.
  2. THE LOCATION OF ALL SERVICES IS TO BE CONFIRMED IN THE FIELD.
  3. INSTALL NEW SEWERS AND CATCHBASIN LEADS BY TRENCHLESS METHODS WHEREVER POSSIBLE.
  4. RENEW/REHABILITATE CATCHBASINS & RENEW CATCHBASIN LEADS WHERE NOTED.

BID OPPORTUNITY NO. 584-2005

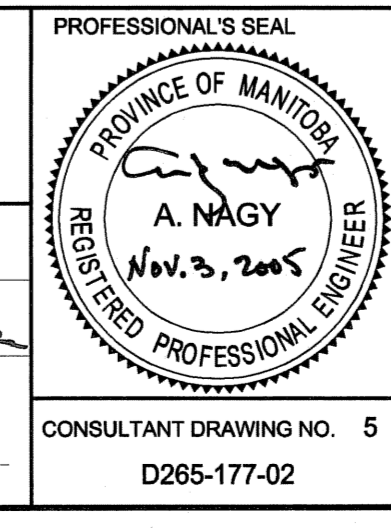
150 mm WM	WATERMAIN	150 mm WM	○	CURB STOP	○	150 mm WM	WATERMAIN	150 mm WM	+	LOCATION APPROVED
○	HYDRANT	+	○	REDUCER	○	+	HYDRANT	+	+	UNDERGROUND STRUCTURES
○	VALVE	○	○	COUPLING	○	○	VALVE	○	○	
300 mm LDS	LAND DRAINAGE SEWER	300 mm LDS	○	ANODE	○	○	LAND DRAINAGE SEWER	300 mm LDS	○	DATE
250 mm WWS	WASTE WATER SEWER	250 mm WWS	○	HYDRO	○	○	WASTE WATER SEWER	250 mm WWS	○	DATE
○	MANHOLE	○	○	MTS	○	○	PAVEMENT CROWN	○	○	NOTE:
○	CATCH BASIN	○	○	GAS	○	○	N/W PROPERTY LINE	○	○	LOCATION OF UNDERGROUND STRUCTURES AS SHOWN ARE BASED ON THE BEST INFORMATION AVAILABLE. BUT NO GUARANTEE IS GIVEN THAT ALL EXISTING UTILITIES ARE SHOWN OR THAT THE GIVEN LOCATIONS ARE EXACT. CONFIRMATION OF EXISTENCE AND EXACT LOCATION OF ALL SERVICES MUST BE OBTAINED FROM THE INDIVIDUAL UTILITIES BEFORE PROCEEDING WITH CONSTRUCTION.
○	CURB INLET	○	○	TESTHOLE	○	○	S/E PROPERTY LINE	○	○	
○	CULVERT	○	○	LAMP STANDARD	○	○	N/W GUTTER	○	○	
○	PIPE ABANDONMENTS	○	○	TREE	○	○	S/E GUTTER	○	○	
○	SURVEY BAR	○	○		○	○		○	○	
○	EXISTING	○	○	LEGEND - PLAN	○	○	LEGEND - PROFILE	○	○	
○	NEW	○	○	LEGEND - PLAN	○	○	LEGEND - PROFILE	○	○	

BM 36-057	N.E. Cor. Wellington Ave. & McGee St. Tbl. in E. Cor. foundation No. 725 McGee St. 1m N. & 0.1m below brick of S.E. Cor. of Bldg.	ELEV 232.727m
NO.	ISSUED FOR CONSTRUCTION	05/11/03 ADL
NO.	REVISIONS	YYMMDD BY

**METRIC**  
 WHOLE NUMBERS INDICATE MILLIMETRES  
 DECIMALIZED NUMBERS INDICATE METRES



DESIGNED BY	GEB	CHECKED BY	ADL
DRAWN BY	ADL	APPROVED BY	[Signature]
HOR. SCALE	1:250	RELEASED FOR CONSTRUCTION	[Signature]
VERT. SCALE	1:50	DATE	05/11/03



**THE CITY OF WINNIPEG**  
**WATER AND WASTE DEPARTMENT**

**ALEXANDER/BANNATYNE**  
**COMBINED SEWER RELIEF**  
**CONTRACT 2B**  
**McGEE STREET**  
 290m NORTH OF SARGENT AVENUE  
 TO WELLINGTON AVENUE

SHEET 5 OF 17  
 CITY DRAWING NUMBER  
**LD-3208** REV 0