

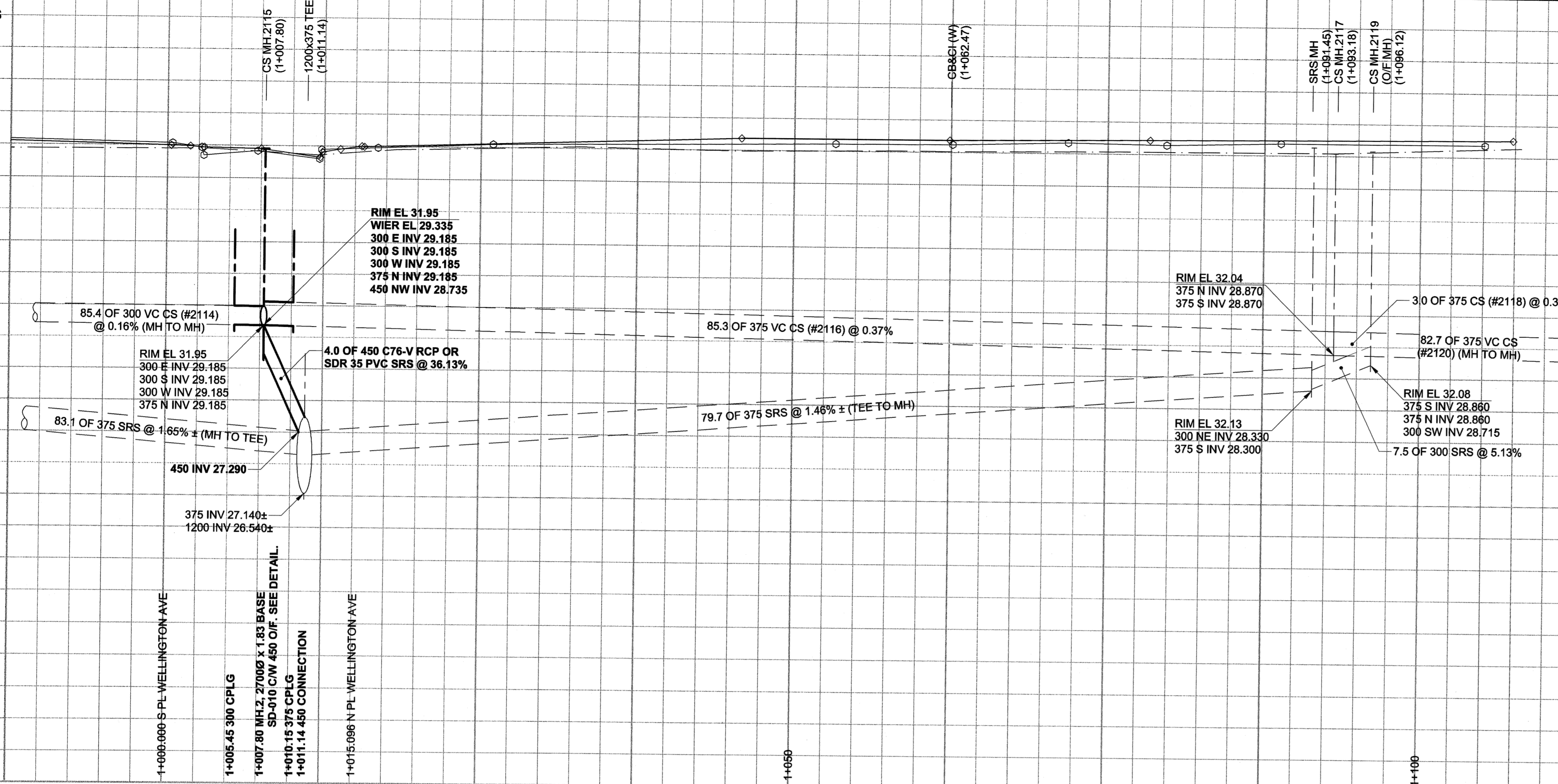
D SIZE 22" x 34" (559mm x 864mm)

PLOT: 05/11/01 11:03:24 AM

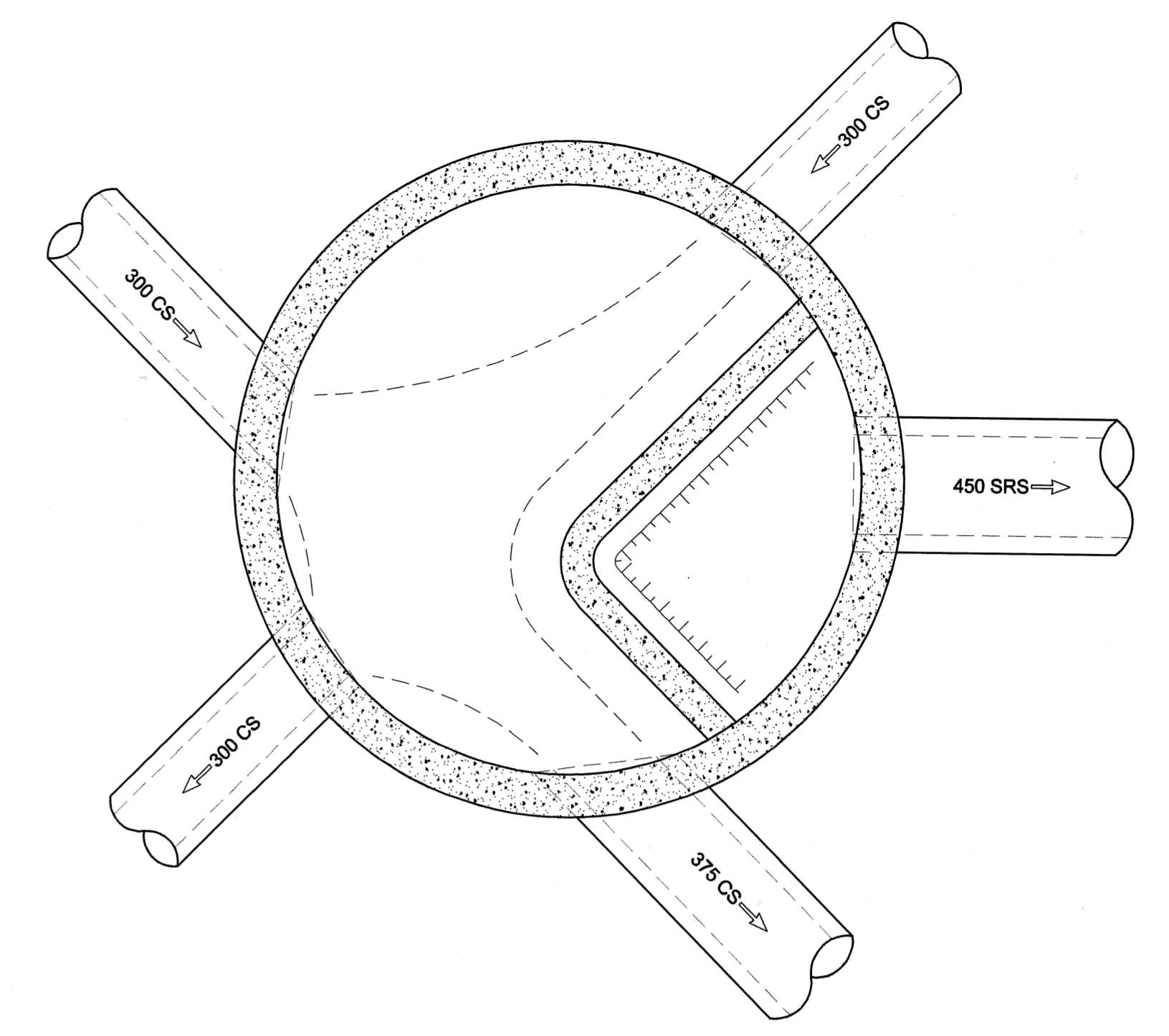
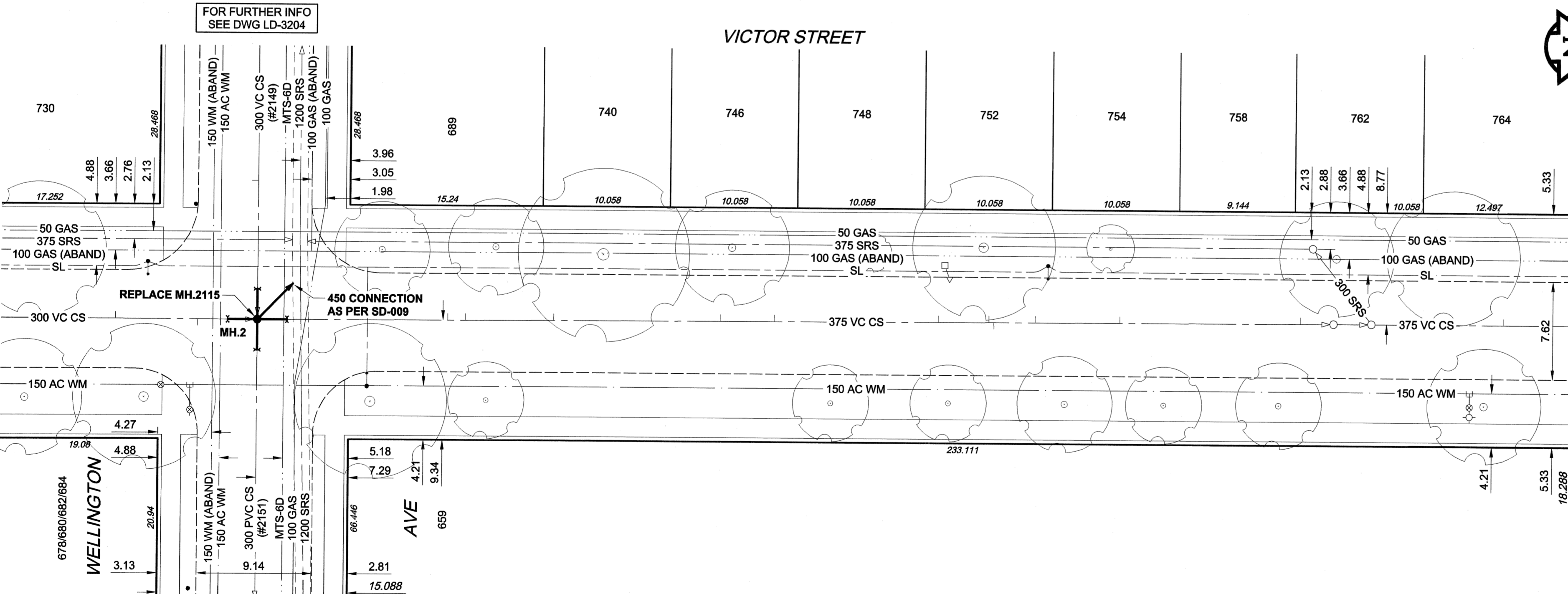
UMA FILE NAME: D265-177-02_02-C-1002_RX.dwg Saved By: atlippl

EXISTING FEATURES

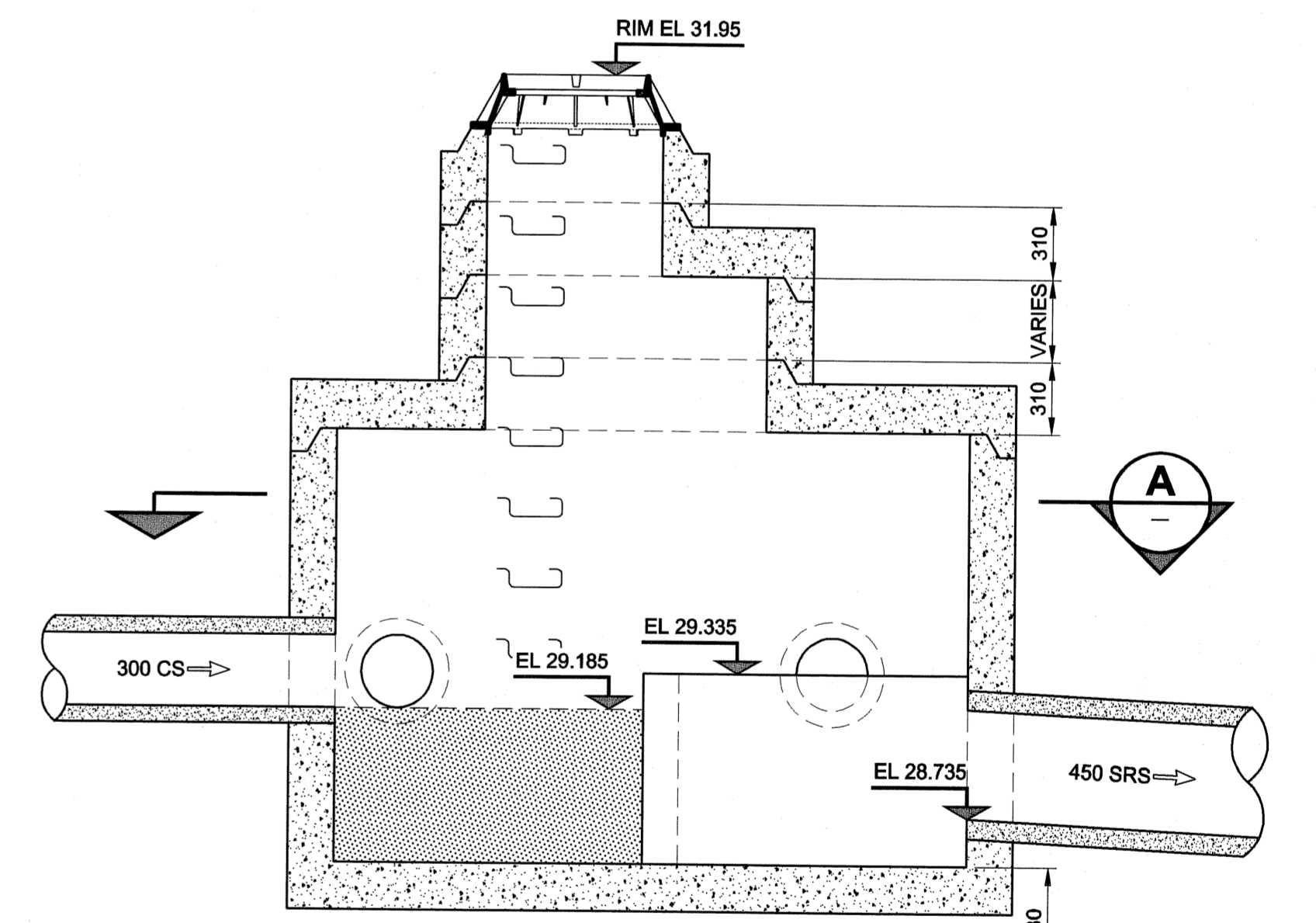
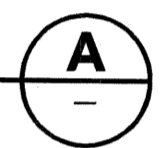
233.0
232.0
231.0
230.0
229.0
228.0
227.0
226.0
225.0
224.0



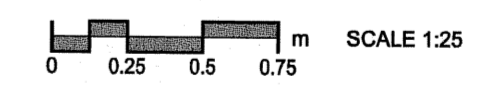
CHAINAGE ALONG E PL



SECTION



MANHOLE 2 OVERFLOW DETAIL



TYPICAL MANHOLE REQUIREMENTS AS PER SD-010

- CONSTRUCTION NOTES:**
1. FOR DETAILED TEST HOLE INFORMATION, SEE SPECIFICATION.
 2. THE LOCATION OF ALL SERVICES IS TO BE CONFIRMED IN THE FIELD.
 3. INSTALL NEW SEWERS AND CATCHBASIN LEADS BY TRENCHLESS METHODS WHEREVER POSSIBLE.
 4. RENEW/REHABILITATE CATCHBASINS & RENEW CATCHBASIN LEADS WHERE NOTED.

WARNING

IF POWER EQUIPMENT OR EXPLOSIVES ARE TO BE USED FOR EXCAVATION ON THIS PROJECT, THE CONTRACTOR MUST:

- 1) NOTIFY THE GAS COMPANY OF THE PROPOSED LOCATION OF EXCAVATION.
- 2) TAKE PRECAUTION TO AVOID DAMAGE TO GAS COMPANY INSTALLATIONS. SEE PROVINCIAL REGULATION 140/92 FOR DETAILS

150 mm WM	WATERMAIN	150 mm WM	CURB STOP	150 mm WM	WATERMAIN	150 mm WM
	HYDRANT VALVE		REDUCER		HYDRANT VALVE	
	LAND DRAINAGE SEWER		COUPLING		WASTE WATER SEWER	
	WASTE WATER SEWER		ANODE		PAVEMENT CROWN	
	MANHOLE		HYDRO		N/W PROPERTY LINE	
	CATCH BASIN		MTS		S/E PROPERTY LINE	
	CURB INLET		GAS		N/W GUTTER	
	CULVERT		TESTHOLE		S/E GUTTER	
	PIPE ABANDONMENTS		LAMP STANDARD		TREE	
	SURVEY BAR		TREE			
	EXISTING		LEGEND - PLAN		LEGEND - PROFILE	
	LEGEND - PLAN		NEW		NEW	

LOCATION APPROVED UNDERGROUND STRUCTURES

DATE

NOTE: LOCATION OF UNDERGROUND STRUCTURES AS SHOWN ARE BASED ON THE BEST INFORMATION AVAILABLE. BUT NO GUARANTEE IS GIVEN THAT ALL EXISTING UTILITIES ARE SHOWN OR THAT THE GIVEN LOCATIONS ARE EXACT. CONFIRMATION OF EXISTENCE AND EXACT LOCATION OF ALL SERVICES MUST BE OBTAINED FROM THE INDIVIDUAL UTILITIES BEFORE PROCEEDING WITH CONSTRUCTION.

NO.	ISSUED FOR CONSTRUCTION	DATE	BY
0	ISSUED FOR CONSTRUCTION	05/11/03	ADL
	REVISIONS	YYMMDD	

DESIGNED BY	CHECKED BY
GEB	
DRAWN BY	APPROVED BY
ADL	
HOR. SCALE	VERT. SCALE
1:250	1:50
DATE	DATE
05/11/03	Nov 3/05

METRIC
WHOLE NUMBERS INDICATE MILLIMETRES
DECIMALIZED NUMBERS INDICATE METRES

UMA | AECOM

PROFESSIONAL'S SEAL
Certificate of Authorization
UMA Engineering Ltd.
No. 256 Expiry: April 30, 2006

BID OPPORTUNITY NO. 584-2005

THE CITY OF WINNIPEG
WATER AND WASTE DEPARTMENT

ALEXANDER/BANNATYNE
COMBINED SEWER RELIEF
CONTRACT 2B
VICTOR STREET
WELLINGTON AVENUE
TO 135m SOUTH OF NOTRE DAME AVENUE

SHEET 2 OF 17
CITY DRAWING NUMBER
LD-3205
REV 0