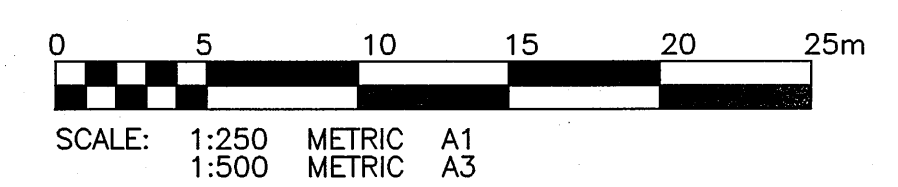


TYPICAL ROAD X-SECTION
SCALE: 1:50

- NOTES:
1. ADJUST MH AND CB RIMS TO NEW GRADES
 2. EXERCISE CAUTION INSTALLING SUBDRAIN TO PREVENT CROSSING CONFLICTS WITH EXISTING GAS SERVICES
 3. AVOID DAMAGE TO EXISTING BOULEVARD TREES WITHIN THE LIMITS OF CONSTRUCTION
 4. REGRADE EXISTING PRIVATE SIDEWALKS AS REQUIRED
 5. LIGHT STANDARDS, HYDRO POLES AND ANCHORS MAY REQUIRE TEMPORARY SUPPORT/REMOVAL OR REPLACEMENT AT THE CONTRACTORS EXPENSE.
 6. PLUG SUBDRAINS AT TERMINAL ENDS
 7. RENEW EXISTING 150 REINFORCED CONCRETE APPROACH (SD-235)
 8. INSTALL CATCH BASIN (SD-024)
 9. ABANDON EXISTING DRAINAGE INLET
 10. ABANDON EXISTING CATCH BASIN
 11. INSTALL CATCH PIT (SD-023) AND DRAINAGE CONNECTION PIPE
 12. ALL MEASUREMENTS ARE TO BACK OF CURB



WARNING

IF POWER EQUIPMENT OR EXPLOSIVES ARE TO BE USED FOR EXCAVATION ON THIS PROJECT THE CONTRACTOR MUST:
 1) NOTIFY THE GAS COMPANY OF THE PROPOSED LOCATION OF EXCAVATION.
 2) TAKE PRECAUTION TO AVOID DAMAGE TO GAS COMPANY INSTALLATIONS.
 SEE PROVINCIAL REGULATION 210/72 FOR DETAILS.

METRIC

WHOLE NUMBERS INDICATE MILLIMETRES
 DECIMALIZED NUMBERS INDICATE METRES

APEGM
 Certificate of Authorization
 KGS Group
 No. 245 Expiry: April 30, 2006

BID OPPORTUNITY NO. 241-2005

EXISTING	LEGEND-PLAN	PROPOSED	EXISTING	LEGEND-PROFILE	PROPOSED	EXISTING	LEGEND-PROFILE	PROPOSED
300 L.D.S.	LAND DRAINAGE SEWER	300 L.D.S.	+	TEST HOLE				
250 WWS	WASTE WATER SEWER	250 WWS	—	GUY WIRE				
	GAS		—	LIGHT STANDARD				
	HYDRO		—	BACK OF CURB				
	M.T.S.		—	CONCRETE				
150 WM	WATERMAIN	150 WM	—	ASPHALT				
+	HYDRANT	+	—	SIDEWALK				
+	VALVE	+	—	RENEW DRIVEWAY	—	—	—	—
○	MANHOLE	○	—	PROPERTY LINE	—	—	—	—
□	CATCH BASIN	□	—	SURVEY BAR	+	+	+	+
▽	CURB INLET	▽	—	GEODETIC BENCHMARK	⊕	⊕	⊕	⊕
•	POLES	•	—	ELEVATION	(32.231)	(32.231)	(32.231)	(32.231)

LOCATION APPROVED UNDERGROUND STRUCTURES

SUPV. U/G STRUCTURES COMMITTEE DATE

NOTE:
 LOCATION OF UNDERGROUND STRUCTURES AS SHOWN ARE BASED ON THE BEST INFORMATION AVAILABLE BUT NO GUARANTEE IS GIVEN THAT THE GIVEN LOCATIONS ARE EXACT. CONFIRMATION OF EXISTENCE AND EXACT LOCATION OF ALL SERVICES MUST BE OBTAINED FROM THE INDIVIDUAL UTILITIES BEFORE PROCEEDING WITH CONSTRUCTION.

B.M. ELEV.	26-044	231.698	N.W. COR. MATHESON AVE. & POWERS ST., TRILLIUM & CONG. FOUNDATION OF JOSEPH WOLINSKY SCHOOL NO. 427/437 MATHESON AVE. 1m W. & 0.5m BELOW BRICK OF N.E. COR. OF SCHOOL.
ISSUED FOR TENDER	05/04/28	CR	
NO. REVISIONS	DATE	BY	

KGS GROUP CONSULTING ENGINEERS & PROJECT MANAGERS
 WINNIPEG (204) 896-1209
 THUNDER BAY (807) 345-2233

DESIGNED BY: C.R.
 CHECKED BY:
 DRAWN BY: A.M.
 APPROVED BY:
 HOR. SCALE: 1:250
 VERTICAL: 1:50
 RELEASED FOR CONSTRUCTION: 06/04/05

ENGINEER'S SEAL

 CONSULTANT DRAWING NO. 04-0107-17

THE CITY OF WINNIPEG
 PUBLIC WORKS DEPARTMENT
 ENGINEERING SERVICES DIVISION

PROJECT TITLE: 2005 RESIDENTIAL STREET RENEWALS
 McADAM AVENUE
 PAVEMENT RECONSTRUCTION
 SURFACE PLAN AND PROFILE
 STA. 2+40 TO AIKINS STREET

SHEET 04 OF 04
 COMPUTER FILE NAME: McADAM-PLOT.DWG
 CITY DRAWING NUMBER: 0004

F:\PROJECTS\2004\04-107-17\MUN\DWGS\MCADAM\DWG\MCADAM-PLAN.PLOT.DWG