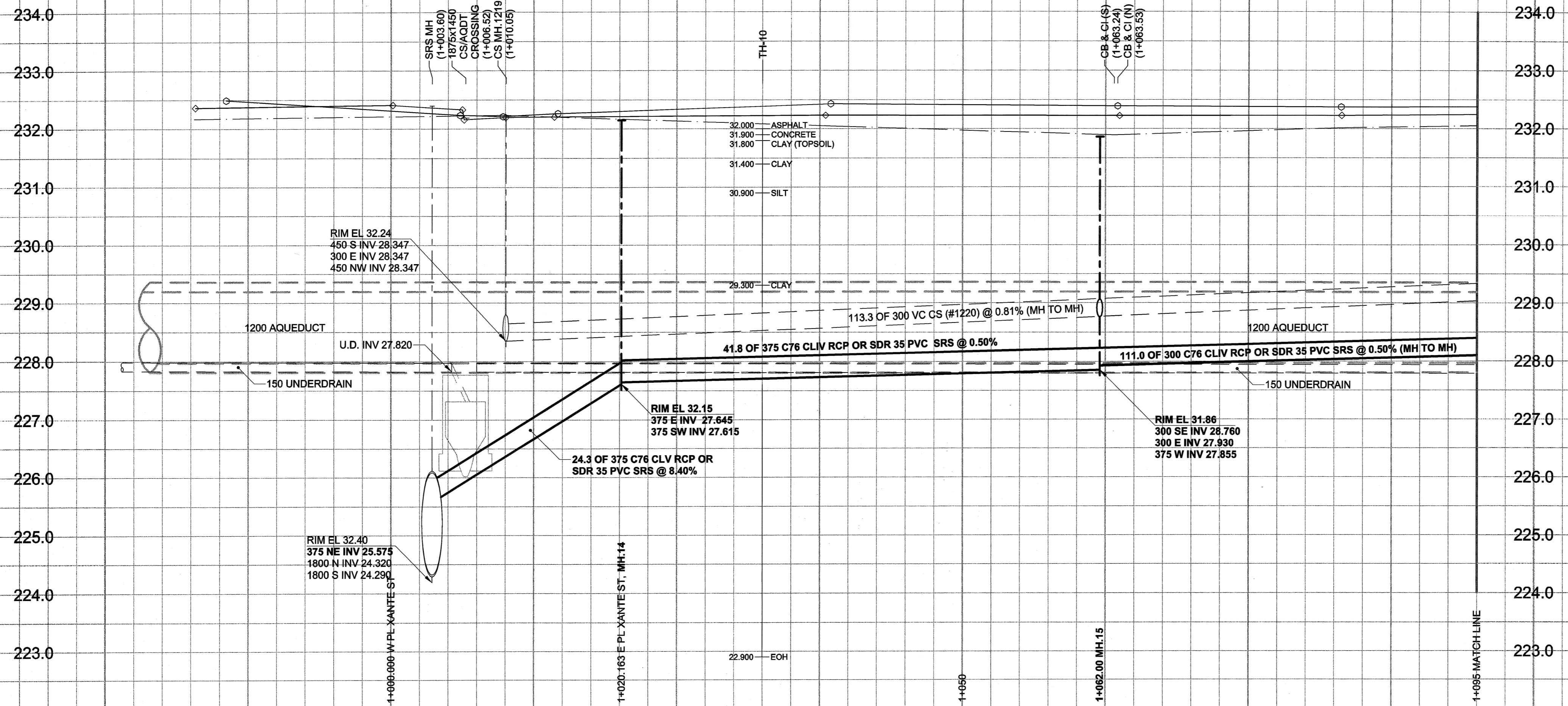


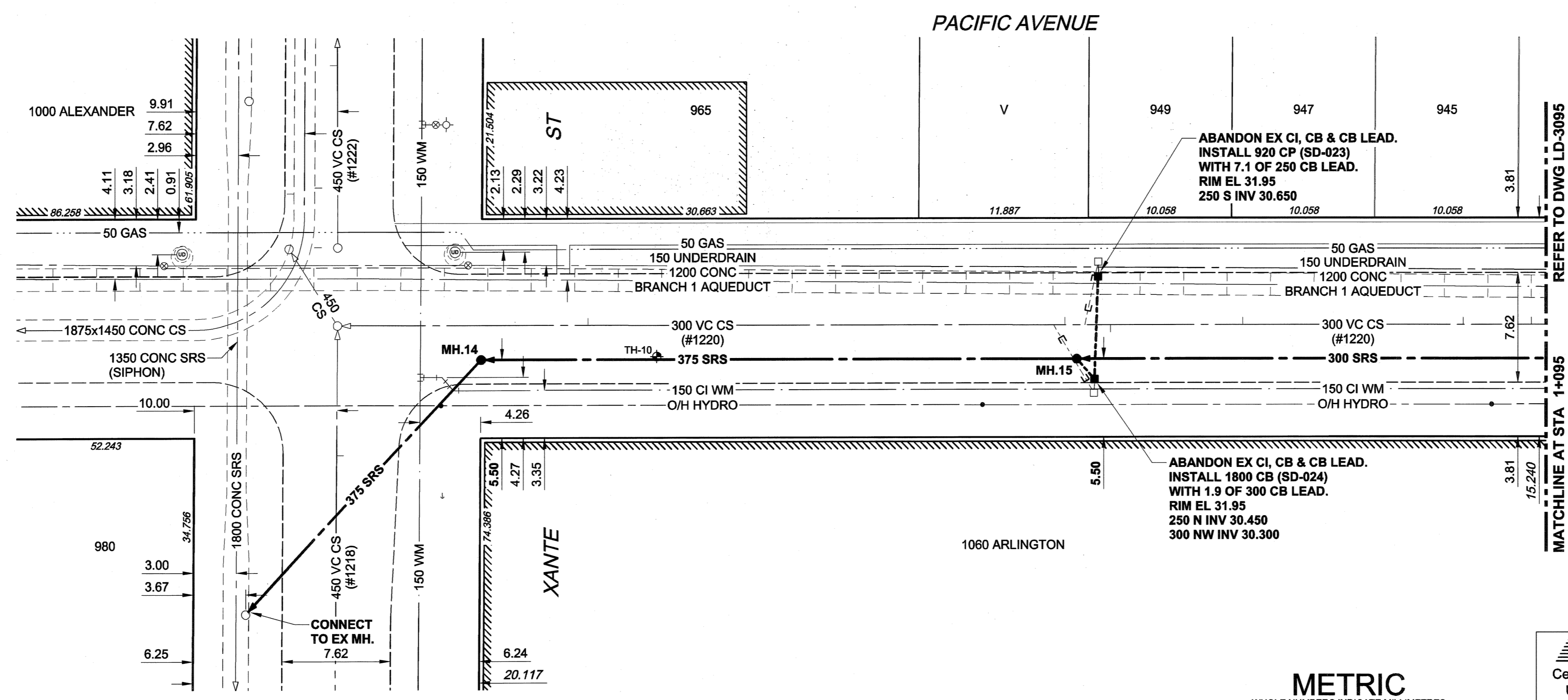
D SIZE 22" x 34" (559mm x 864mm)

PLOT: 05/02/08 4:29:24 PM

UMA FILE NAME: D285-177-01\_01-C-1009\_RX.dwg Saved By: atleppi



CHAINAGE ALONG S PL



**WARNING**  
 IF POWER EQUIPMENT OR EXPLOSIVES ARE TO BE USED FOR EXCAVATION ON THIS PROJECT, THE CONTRACTOR MUST:  
 1) NOTIFY THE GAS COMPANY OF THE PROPOSED LOCATION OF EXCAVATION.  
 2) TAKE PRECAUTION TO AVOID DAMAGE TO GAS COMPANY INSTALLATIONS.  
 SEE PROVINCIAL REGULATION 140/92 FOR DETAILS

EXISTING	LEGEND - PLAN	NEW	EXISTING	LEGEND - PLAN	NEW	EXISTING	LEGEND - PROFILE	NEW
150 mm WM	WATERMAIN	150 mm WM	CURB STOP	150 mm WM	WATERMAIN	150 mm WM	WATERMAIN	150 mm WM
300 mm LDS	LAND DRAINAGE SEWER	300 mm LDS	REDUCER	300 mm LDS	HYDRANT	300 mm LDS	HYDRANT	300 mm LDS
250 mm WWS	WASTE WATER SEWER	250 mm WWS	COUPLING	250 mm WWS	VALVE	250 mm WWS	VALVE	250 mm WWS
	MANHOLE		ANODE		LAND DRAINAGE SEWER		LAND DRAINAGE SEWER	
	CATCH BASIN		HYDRO		WASTE WATER SEWER		WASTE WATER SEWER	
	CURB INLET		MTS		PAVEMENT CROWN		PAVEMENT CROWN	
	CULVERT		GAS		N/W PROPERTY LINE		N/W PROPERTY LINE	
	PIPE ABANDONMENTS		TESTHOLE		S/E PROPERTY LINE		S/E PROPERTY LINE	
	SURVEY BAR		LAMP STANDARD		N/W GUTTER		N/W GUTTER	
			TREE		S/E GUTTER		S/E GUTTER	

**LOCATION APPROVED**  
 UNDERGROUND STRUCTURES

SUPR. U/G STRUCTURES DATE COMMITTEE

**NOTE:**  
 LOCATION OF UNDERGROUND STRUCTURES AS SHOWN ARE BASED ON THE BEST INFORMATION AVAILABLE. BUT NO GUARANTEE IS GIVEN THAT ALL EXISTING UTILITIES ARE SHOWN OR THAT THE GIVEN LOCATIONS ARE EXACT. CONFIRMATION OF EXISTENCE AND EXACT LOCATION OF ALL SERVICES MUST BE OBTAINED FROM THE INDIVIDUAL UTILITIES BEFORE PROCEEDING WITH CONSTRUCTION.

BM 36-020 ELEV 232.294m	S. E. Cor. Logan Ave. & Trinity St., Tbl. in N. Conc. foundation of No. 936 Logan Ave., 3m W. & 0.3m below window of N.E. Cor. of Bldg.
NO.	REVISIONS
0	ISSUED FOR CONSTRUCTION 05/02/08 ADL
	DATE 05/02/09

**METRIC**  
 WHOLE NUMBERS INDICATE MILLIMETRES  
 DECIMALIZED NUMBERS INDICATE METRES

**UMA**  
 An AECOM Company

2004 UMA ENGINEERING LTD. ALL RIGHTS RESERVED.

DESIGNED BY	FMI/GEB	CHECKED BY	[Signature]
DRAWN BY	ADL	APPROVED BY	[Signature]
HOR. SCALE	1:250	RELEASED FOR CONSTRUCTION	[Signature]
VERT. SCALE	1:50	DATE	05/02/09

**APEGM**  
 Certificate of Authorization  
 UMA Engineering Ltd.  
 No. 256 Expiry: April 30, 2005

PROFESSIONAL'S SEAL  
 PROVINCE OF MANITOBA  
 REGISTERED PROFESSIONAL ENGINEER  
 A. NAGY  
 Feb 8, 2008  
 CONSULTANT DRAWING NO. 09  
 D265-177-01

**THE CITY OF WINNIPEG**  
 WATER AND WASTE DEPARTMENT

**ALEXANDER/BANNATYNE**  
 COMBINED SEWER RELIEF  
 CONTRACT 1A  
 PACIFIC AVENUE  
 XANTE STREET  
 TO 130m W OF ARLINGTON STREET

SHEET 9 OF 18  
 CITY DRAWING NUMBER  
 LD-3094  
 REV 0

BID OPPORTUNITY NO. 12-2005

- CONSTRUCTION NOTES:**
- For detailed test hole information, see specification.
  - The location of all services is to be confirmed in the field.
  - Install new sewers and catchbasin leads by trenchless methods wherever possible.
  - Renew/Rehabilitate catchbasins & renew catchbasin leads where noted.
  - Contact the Water and Waste Department, Construction Services Co-ordinator at 986-3823 a minimum of 7 Days prior to crossing or working adjacent to Aqueduct to arrange for inspection.