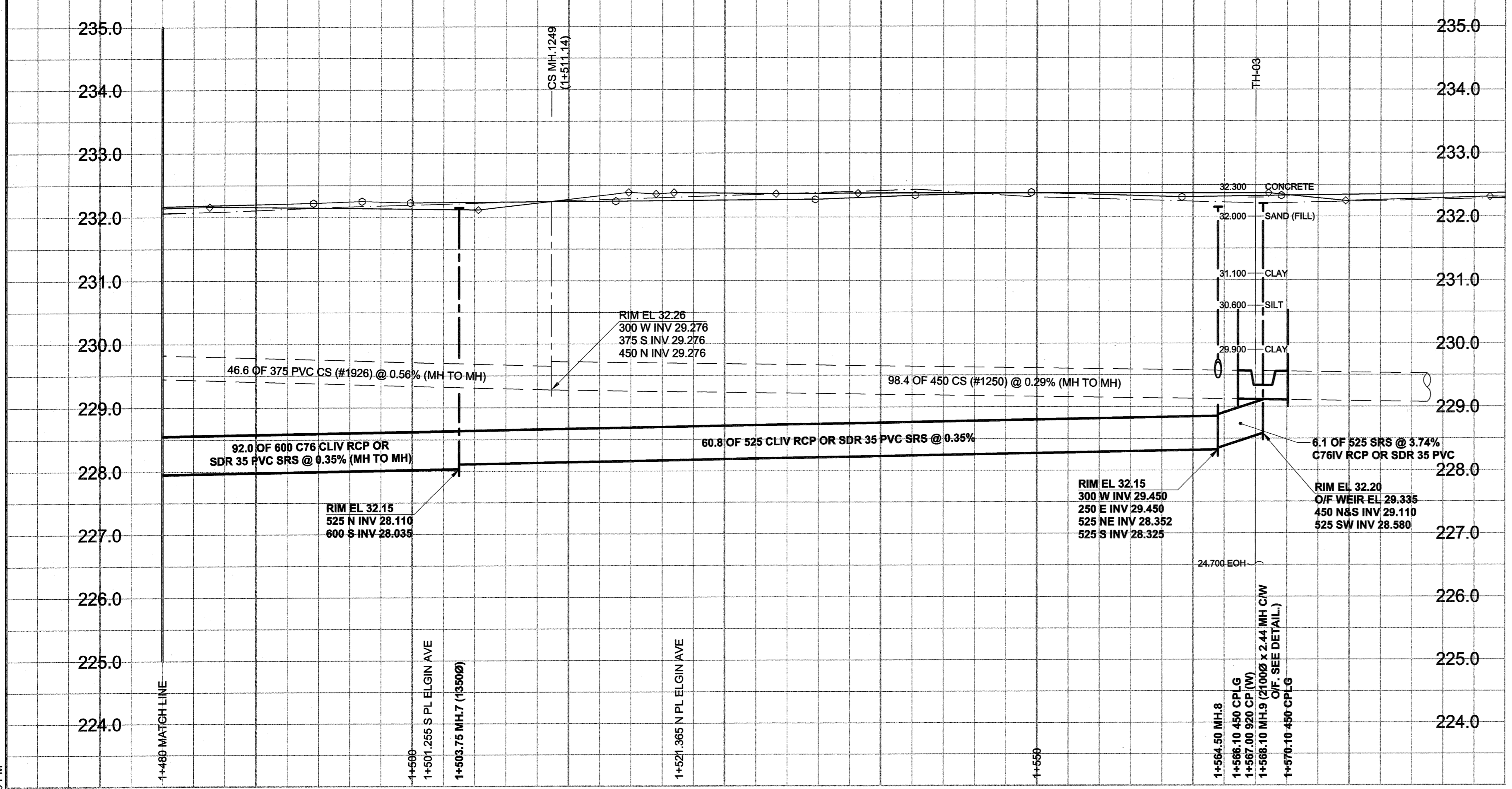


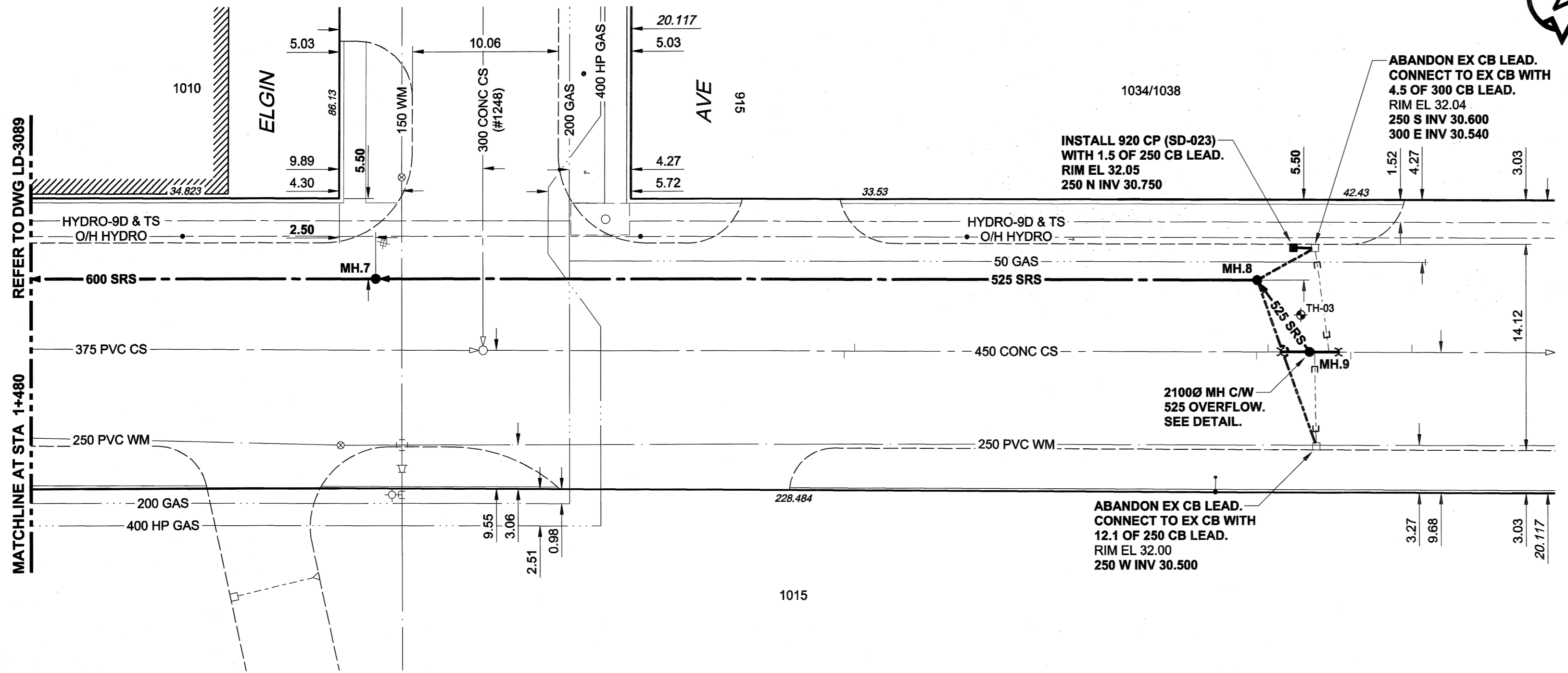
PLOT: 05/02/08 4:30:20 PM

UMA FILE NAME: D265-177-01 01-C-1005 RX.dwg Saved By: atal@ppi



CHAINAGE ALONG E PL

ARLINGTON STREET

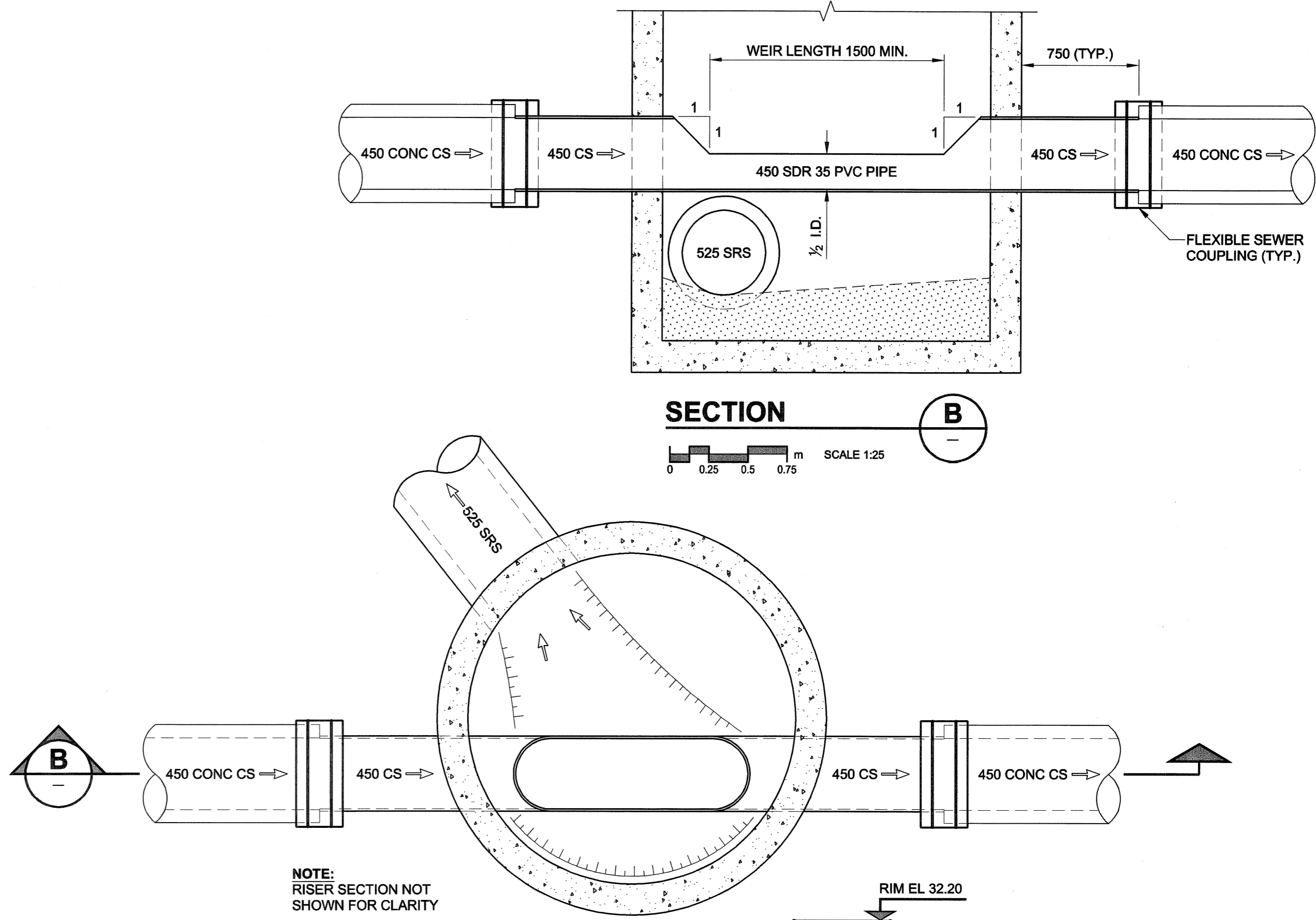


**WARNING**  
IF POWER EQUIPMENT OR EXPLOSIVES ARE TO BE USED FOR EXCAVATION ON THIS PROJECT, THE CONTRACTOR MUST:  
1) NOTIFY THE GAS COMPANY OF THE PROPOSED LOCATION OF EXCAVATION.  
2) TAKE PRECAUTION TO AVOID DAMAGE TO GAS COMPANY INSTALLATIONS.  
SEE PROVINCIAL REGULATION 140/92 FOR DETAILS

150 mm WM	WATERMAIN	150 mm WM	EXISTING	LEGEND - PLAN	NEW	150 mm WM	WATERMAIN	150 mm WM	EXISTING	LEGEND - PROFILE	NEW
⊕	HYDRANT	⊕	---	REDUCER	---	⊕	HYDRANT	⊕	---	REDUCER	---
⊕	VALVE	⊕	---	COUPLING	---	⊕	VALVE	⊕	---	COUPLING	---
⊕	LAND DRAINAGE SEWER	⊕	---	ANODE	---	⊕	LAND DRAINAGE SEWER	⊕	---	ANODE	---
⊕	WASTE WATER SEWER	⊕	---	HYDRO	---	⊕	WASTE WATER SEWER	⊕	---	HYDRO	---
○	MANHOLE	●	---	MTS	---	○	PAVEMENT CROWN	○	---	N/W PROPERTY LINE	---
□	CATCH BASIN	■	---	GAS	---	□	S/E PROPERTY LINE	□	---	N/W GUTTER	---
△	CURB INLET	▲	---	TESTHOLE	---	△	N/W GUTTER	△	---	S/E GUTTER	---
▭	CULVERT	▭	---	LAMP STANDARD	---	▭	S/E GUTTER	▭	---		---
⊕	PIPE ABANDONMENTS	⊕	---	TREE	---						
⊕	SURVEY BAR	⊕	---		---						
⊕	EXISTING	⊕	---	LEGEND - PLAN	---	⊕	EXISTING	⊕	---	LEGEND - PROFILE	---
⊕	NEW	⊕	---	LEGEND - PLAN	---	⊕	NEW	⊕	---	LEGEND - PROFILE	---

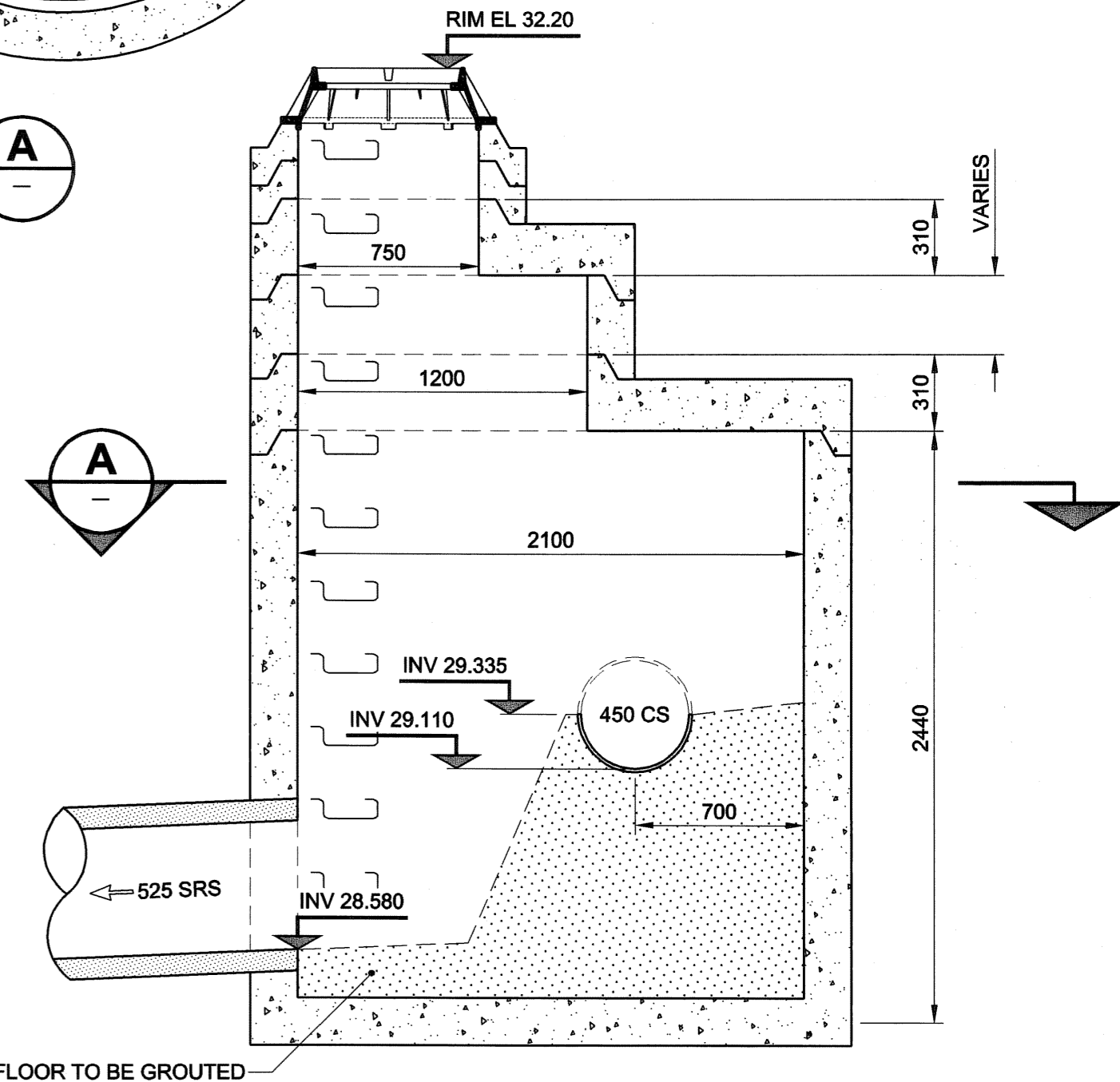
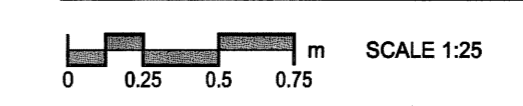
**LOCATION APPROVED**  
UNDERGROUND STRUCTURES  
SUPR. U/G STRUCTURES DATE COMMITTEE  
**NOTE:**  
LOCATION OF UNDERGROUND STRUCTURES AS SHOWN ARE BASED ON THE BEST INFORMATION AVAILABLE. BUT NO GUARANTEE IS GIVEN THAT ALL EXISTING UTILITIES ARE SHOWN OR THAT THE GIVEN LOCATIONS ARE EXACT. CONFIRMATION OF EXISTENCE AND EXACT LOCATION OF ALL SERVICES MUST BE OBTAINED FROM THE INDIVIDUAL UTILITIES BEFORE PROCEEDING WITH CONSTRUCTION.

BM 36-046 ELEV 232.498m	N.W. Cor. Notre Dame Ave. & Arlington St., Tbt, in E. Cor. foundation No. 900 Notre Dame Ave. 0.5m S. & 0.05m below tyndall stone N.E. Cor. of Bldg.
NO. REVISIONS	DATE
0	ISSUED FOR CONSTRUCTION 05/02/08 ADL
	DATE 05/02/09

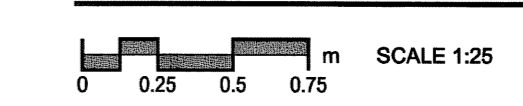


**NOTE:**  
RISER SECTION NOT SHOWN FOR CLARITY

**SECTION A**



**MANHOLE 9 OVERFLOW DETAIL**



TYPICAL MANHOLE REQUIREMENTS AS PER SD-010

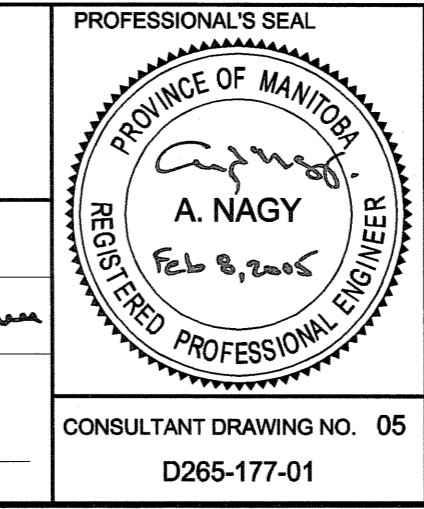
- CONSTRUCTION NOTES:**
- For detailed test hole information, see specification.
  - The location of all services is to be confirmed in the field.
  - Install new sewers and catchbasin leads by trenchless methods wherever possible.
  - Renew/Rehabilitate catchbasins & renew catchbasin leads where noted.

**METRIC**  
WHOLE NUMBERS INDICATE MILLIMETRES  
DECIMALIZED NUMBERS INDICATE METRES



2004 UMA ENGINEERING LTD. ALL RIGHTS RESERVED.  
DESIGNED BY: FMI/GEB  
CHECKED BY: [Signature]  
DRAWN BY: ADL  
APPROVED BY: [Signature]  
HOR. SCALE: 1:250  
VERT. SCALE: 1:50  
DATE: 05/02/09

**APEGM**  
Certificate of Authorization  
UMA Engineering Ltd.  
No. 256 Expiry: April 30, 2005



**THE CITY OF WINNIPEG**  
WATER AND WASTE DEPARTMENT

**ALEXANDER/BANNATYNE**  
COMBINED SEWER RELIEF  
CONTRACT 1A  
ARLINGTON STREET  
63m N OF WILLIAM AVENUE  
TO 12m S OF ROSS AVENUE

SHEET 5 OF 18  
CITY DRAWING NUMBER  
REV 0

LD-3090

BID OPPORTUNITY NO. 12-2005