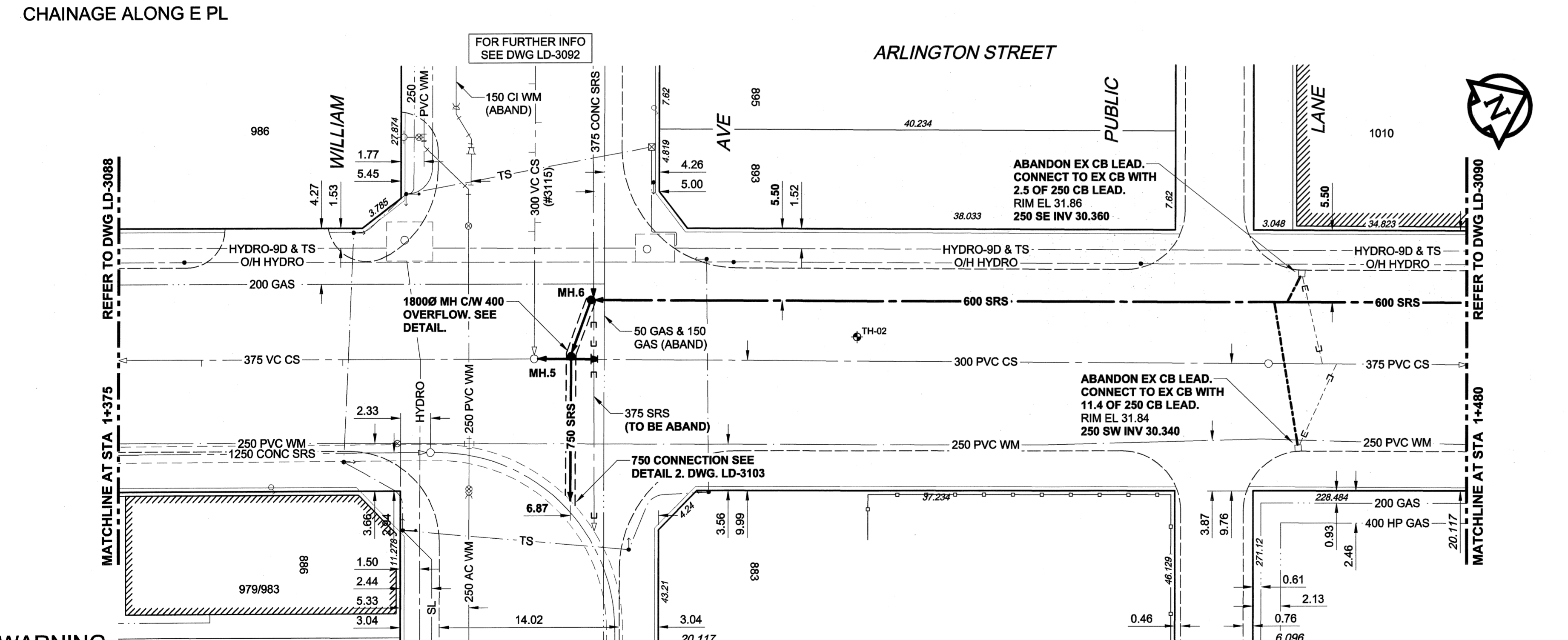
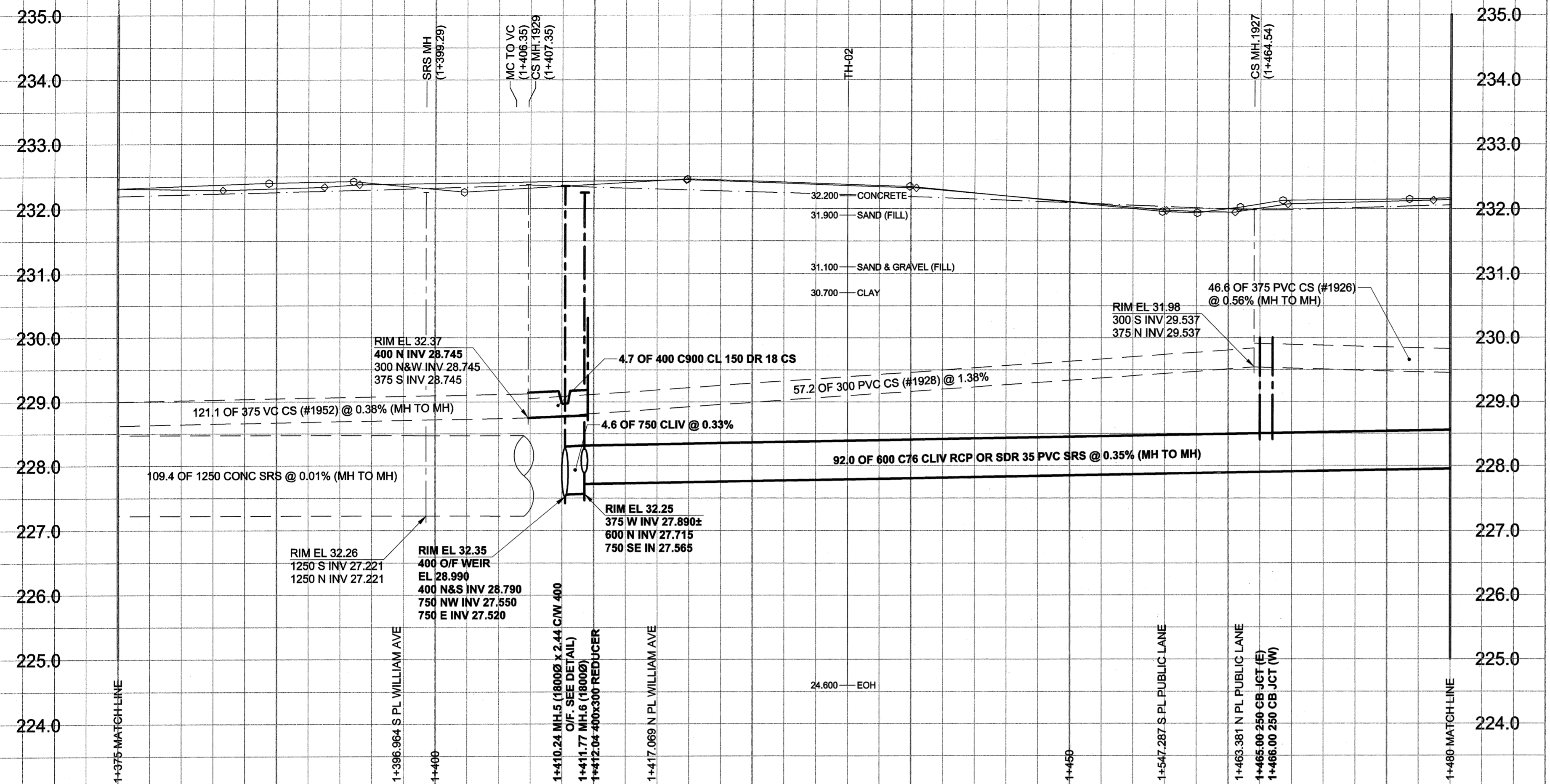


D SIZE 22" x 34" (568mm x 864mm)

PLOT: 05/02/08 4:30:36 PM

UMA FILE NAME: D265-177-01_01-C-1004_RX.dwg Saved By: aleippl



WARNING
 IF POWER EQUIPMENT OR EXPLOSIVES ARE TO BE USED FOR EXCAVATION ON THIS PROJECT, THE CONTRACTOR MUST:
 1) NOTIFY THE GAS COMPANY OF THE PROPOSED LOCATION OF EXCAVATION.
 2) TAKE PRECAUTION TO AVOID DAMAGE TO GAS COMPANY INSTALLATIONS.
 SEE PROVINCIAL REGULATION 140/92 FOR DETAILS.

150 mm WM		150 mm WM		CURB STOP		150 mm WM		150 mm WM		150 mm WM	
	HYDRANT		VALVE		REDUCER		COUPLING		HYDRANT		VALVE
	LAND DRAINAGE SEWER		WASTE WATER SEWER		ANODE		HYDRO		MTS		LAND DRAINAGE SEWER
	MANHOLE		CATCH BASIN		GAS		TESTHOLE		PAVEMENT CROWN		N/W PROPERTY LINE
	CURB INLET		CULVERT		LAMP STANDARD		TREE		N/W GUTTER		S/E GUTTER
	PIPE ABANDONMENTS		SURVEY BAR						N/W GUTTER		S/E GUTTER

LOCATION APPROVED UNDERGROUND STRUCTURES

NO.	REVISIONS	DATE	BY
0	ISSUED FOR CONSTRUCTION	05/02/08	ADL

NOTE:
 LOCATION OF UNDERGROUND STRUCTURES AS SHOWN ARE BASED ON THE BEST INFORMATION AVAILABLE. BUT NO GUARANTEE IS GIVEN THAT ALL EXISTING UTILITIES ARE SHOWN OR THAT THE GIVEN LOCATIONS ARE EXACT. CONFIRMATION OF EXISTENCE AND EXACT LOCATION OF ALL SERVICES MUST BE OBTAINED FROM THE INDIVIDUAL UTILITIES BEFORE PROCEEDING WITH CONSTRUCTION.

METRIC
 WHOLE NUMBERS INDICATE MILLIMETRES
 DECIMALIZED NUMBERS INDICATE METRES

UMA
 An AECOM Company
 2004 UMA ENGINEERING LTD. ALL RIGHTS RESERVED.

DESIGNED BY	FMI/GE	CHECKED BY	A. NAGY
DRAWN BY	ADL	APPROVED BY	

HOR. SCALE 1:250
 VERT. SCALE 1:50

DATE 05/02/09

APEGM
 Certificate of Authorization
 UMA Engineering Ltd.
 No. 256 Expiry: April 30, 2005

PROFESSIONAL'S SEAL
 PROVINCE OF MANITOBA
 REGISTERED PROFESSIONAL ENGINEER
 A. NAGY
 Feb 8, 2005

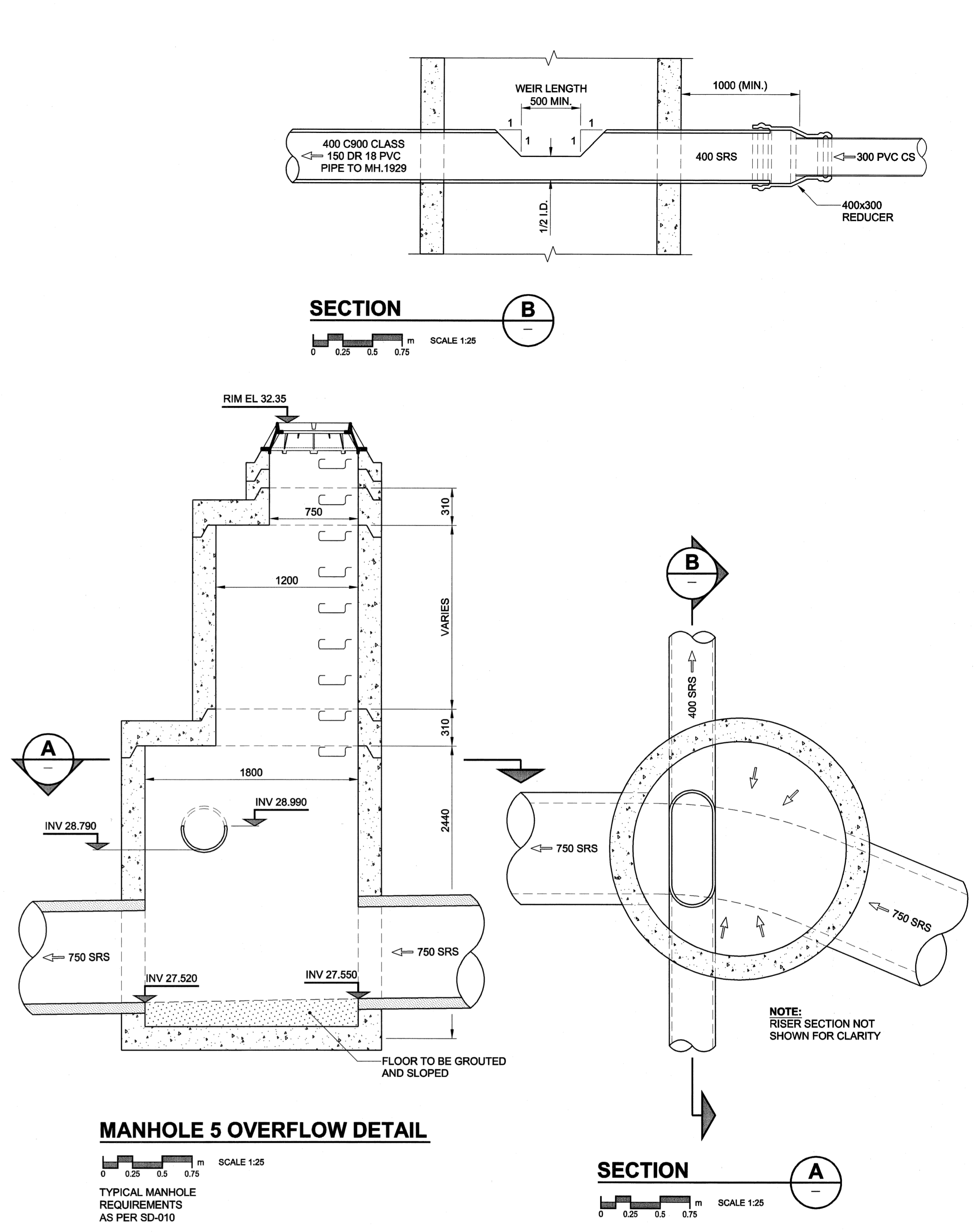
CONSULTANT DRAWING NO. 04
 D265-177-01

THE CITY OF WINNIPEG
 WATER AND WASTE DEPARTMENT

ALEXANDER/BANNATYNE
 COMBINED SEWER RELIEF
 CONTRACT 1A
 ARLINGTON STREET
 80m N OF BANNATYNE AVENUE
 TO 21m S OF ELGIN AVENUE

SHEET 4 OF 18
 CITY DRAWING NUMBER
 LD-3089

BID OPPORTUNITY NO. 12-2005



CONSTRUCTION NOTES:

- For detailed test hole information, see specification.
- The location of all services is to be confirmed in the field.
- Install new sewers and catchbasin leads by trenchless methods wherever possible.
- Renew/Rehabilitate catchbasins & renew catchbasin leads where noted.