

NIAKWA ROAD EAST



ALL CHAINAGES ARE MEASURED ALONG THE CENTER LINE OF FERMOR AVENUE

- CONSTRUCTION NOTES**
- 1) CURB REPLACEMENT AS DIRECTED BY THE CONTRACT ADMINISTRATOR
 - 2) ALL STREET RADIUS CURB UNDER 15M RADIUS SHALL BE REPLACED AS MODIFIED OR AS DIRECTED BY THE CONTRACT ADMINISTRATOR
 - 3) PAVEMENT REPAIRS SHOWN ARE ONLY A REPRESENTATIVE SAMPLE OF THE TENDERED QUANTITIES
 - 4) ASPHALT TIE-INS ON APPROACHES TO BE DETERMINED IN THE FIELD BY THE CONTRACT ADMINISTRATOR
 - 5) ALL BULLNOSES TO HAVE SLOPED FACE.

WARNING

IF POWER EQUIPMENT OR EXPLOSIVES ARE TO BE USED FOR EXCAVATION ON THIS PROJECT THE CONTRACTOR MUST:

- 1) OBTAIN CLEARANCE FROM THE GAS UTILITY PRIOR TO EXCAVATION.
- 2) TAKE PRECAUTION TO AVOID DAMAGE TO GAS UTILITY INSTALLATIONS.

SEE PROVINCIAL REGULATION 210/72 FOR DETAILS

TENDER NO. 99-2004

METRIC
WHOLE NUMBERS INDICATE MILLIMETRES
DECIMALIZED NUMBERS INDICATE METRES

150 mm WM	WATERMAIN	150 mm WM	HYDRO	150 mm WM	WATERMAIN
⊕	HYDRANT	⊕	MTS	⊕	HYDRANT
⊙	VALVE	⊙	GAS	X	VALVE
⊕	CURB STOP	⊕	CONCRETE	300 mm LDS	SEWER
⊕	RAILWAY SIGNAL	⊕	LIMIT OF ASPHALT	300 mm LDS	GUTTER
⊕	CULVERT	⊕	ASPHALT	⊕	PROFILE
⊕	MANHOLE	⊕	ELEVATIONS	⊕	MEDIAN GUTTER
⊕	CATCH BASIN	⊕	PROPERTY LINE	⊕	DITCH PROFILE
⊕	CURB INLET	⊕	SURVEY BAR	⊕	SIGN CANTILEVERED
⊕	WOOD POLES	⊕	GEODETIC BENCH MARK	⊕	SIGN SINGLE POST
⊕	LAMP STANDARD	⊕	RAMP CURB	⊕	TRAFFIC SIGNAL POLE
EXISTING	LEGEND - PLAN	PROPOSED	EXISTING	LEGEND - PLAN	PROPOSED
EXISTING	LEGEND - PROFILE	PROPOSED	EXISTING	LEGEND - PROFILE	PROPOSED

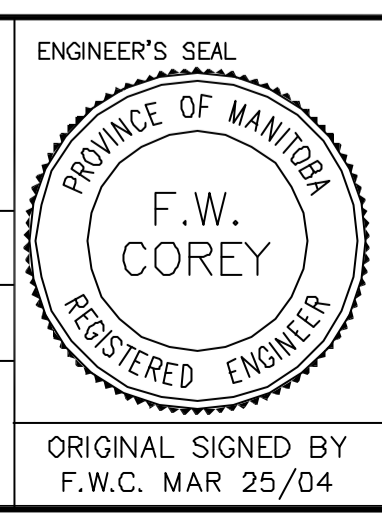
LOCATION APPROVED
UNDERGROUND STRUCTURES

SUPR. U/G STRUCTURES DATE COMMITTEE

NOTE:
LOCATION OF UNDERGROUND STRUCTURES AS SHOWN ARE BASED ON THE BEST INFORMATION AVAILABLE, BUT NO GUARANTEE IS GIVEN THAT ALL EXISTING UTILITIES ARE SHOWN OR THAT THE GIVEN LOCATIONS ARE EXACT. CONFIRMATION OF EXISTENCE AND EXACT LOCATION OF ALL SERVICES MUST BE OBTAINED FROM THE INDIVIDUAL UTILITIES BEFORE PROCEEDING WITH CONSTRUCTION.

B.M. ELEV.	GBM 55-031
	232.397m
NO.	REVISIONS
	DATE
	BY

ENGINEERING DIVISION TECHNOLOGY SERVICES BRANCH 106 - 1155 PACIFIC AVE	
DESIGNED BY B.K.	CHECKED BY A.J.P. / B.K.
DRAWN BY M.R.J.	APPROVED BY
HOR. SCALE: 1 : 250	
VERTICAL: 1 : 10	
DATE 2004/03/18	



THE CITY OF WINNIPEG
PUBLIC WORKS DEPARTMENT

FERMOR AVENUE
FROM LAGIMODIERE BLVD. TO ARCHIBALD STREET
ASPHALT RESURFACING AND ASSOCIATED WORKS
FROM STA. 31+00 TO STA. 32+10

CITY DRAWING NUMBER SE-04-27
SHEET 21 OF 24

21