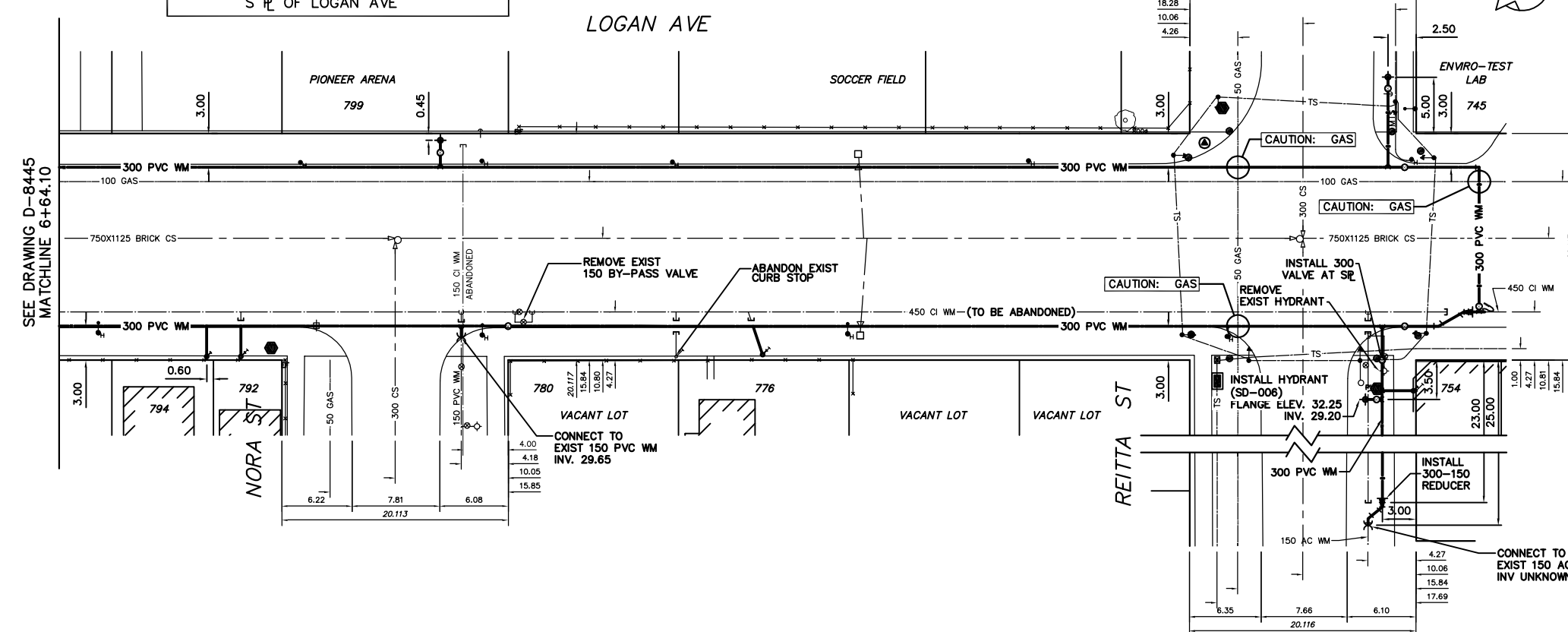


WATER SERVICE INFORMATION					
ADDRESS	SIZE(mm) & TYPE (STREET)	SIZE(mm) & TYPE (PROP)	SHORT & LONG MEASUREMENT	CORP LOCATION	REMARKS
799 LOGAN AVE	50 COPPER	50 COPPER	5.79 E WL HENRY	1.83 W OF S/C	ANODE AT CORP
SEASONAL SERV.	50 COPPER	50 COPPER	0.30 E WL BLDG	OPP S/C	SERVICE OFF HENRY
799 LOGAN AVE	16 COPPER	16 COPPER	28.65 E EL SHERMAN	OPP S/C	SERVICE OFF LOGAN
* SEASONAL SERV.	16 COPPER	16 COPPER	3.66 W WL NORA	OPP S/C	3/4" COPPER C.P.G. 4' FROM S/D
* 794 LOGAN AVE	13 LEAD	13 LEAD	OPP WL FR. WINDOW 792	OPP S/C	DBL SERV. 792 LOGAN
* RESIDENTIAL	13 LEAD	13 LEAD	3.66 W WL NORA	OPP S/C	DBL SERV. 794 LOGAN
* 792 LOGAN AVE	19 COPPER	19 COPPER	2.13 E EL 778	OPP S/C	FORMERLY DBL W/778 LOGAN
* RESIDENTIAL	19 COPPER	19 COPPER	14.93 E EL NORA	OPP S/C	NOW VACANT LOT
* 780 LOGAN AVE	16 LEAD	16 LEAD	0.61 E EL	OPP S/C	FORMERLY DBL W/774(DEMOLISHED)
* RESIDENTIAL	16 LEAD	16 LEAD	22.62 E EL NORA	OPP S/C	MAR/00 RENEWED SERV. BOX
* 778 LOGAN AVE	16 LEAD	16 LEAD	2.59 S N BL	OPP S/C	DBL SERV 752 LOGAN
* RESIDENTIAL	16 LEAD	16 LEAD	NA	OPP S/C	DBL SERV 752 LOGAN
* 754 LOGAN AVE	150 ASBESTOS	150 ASBESTOS	15.24 E EL LULU	OPP VALVE	1 VALVE AT ST. LINE
* COMMERCIAL	150 ASBESTOS	150 ASBESTOS	15.24 E EL LULU	OPP VALVE	1 VALVE 10" N OF WM

NOTE: CHAINAGES SHOWN ARE ALONG S RL OF LOGAN AVE

\* SERVICES TO BE RENEWED TO R ALL OTHERS TO BE RECONNECTED

- CONSTRUCTION NOTES**
1. EXPOSE EXISTING WATERMAIN & CONFIRM INVERTS PRIOR TO CONSTRUCTION.
  2. LOCATION OF ALL SERVICES TO BE CONFIRMED IN THE FIELD.
  3. INSTALL WATERMAIN BY TRENCHLESS METHODS.
  4. TRENCHES AND EXCAVATIONS UNDER PAVEMENT AND WITHIN 1 METRE OF A PAVED AREA INCLUDING SIDEWALKS SHALL BE CLASS 3 BACKFILL.
  5. ALL MATERIALS SHALL CONFORM TO THE CITY OF WINNIPEG STANDARD CONSTRUCTION SPECIFICATIONS.



SEE DRAWING D-8445 MATCHLINE 6+64.10

**METRIC**  
WHOLE NUMBERS INDICATE MILLIMETRES  
DECIMALIZED NUMBERS INDICATE METRES

NOTE: ALL VALVES TO BE INSTALLED COUNTERCLOCKWISE TO CLOSE

**WARNING**

IF POWER EQUIPMENT OR EXPLOSIVES ARE TO BE USED FOR EXCAVATION ON THIS PROJECT THE CONTRACTOR MUST:

- 1) NOTIFY THE GAS COMPANY OF THE PROPOSED LOCATION OF EXCAVATION.
- 2) TAKE PRECAUTION TO AVOID DAMAGE TO GAS COMPANY INSTALLATIONS.

SEE PROVINCIAL REGULATION 210/72 FOR DETAILS

200 WM	WATERMAIN	200 WM	SL, HYDRO	150 WM	WATERMAIN NORTH SIDE	150 WM
+	HYDRANT	+	MTS	+	WATERMAIN SOUTH SIDE	+
o	VALVE	o	TRAFFIC SIGNALS	o	HYDRANT	o
525 LDS	LAND DRAINAGE SEWER	525 LDS	GAS	50 GAS	VALVE	X
375 WWS	WASTEWATER SEWER	375 WWS	SURVEY BAR	300 LDS	LAND DRAINAGE SEWER	300 LDS
o	MANHOLE	o	FENCE	250 WWS	WASTEWATER SEWER	250 WWS
□	CATCH BASIN	□	POLE - HYDRO, MTS	X	PROFILE	X
▽	CURB INLET	▽	CURB STOP	o	GROUND ABOVE PIPE	o
△	REDUCER	△	GUY ANCHOR	o	GROUND NORTH GUTTER	o
X	COUPLING	X	LIGHT STANDARD	o	GROUND SOUTH GUTTER	o
o	ANODE	o	TREE			
EXISTING	LEGEND-PLAN	PROPOSED	EXISTING	LEGEND-PLAN	PROPOSED	EXISTING

LOCATION APPROVED UNDERGROUND STRUCTURES	
SUPV. U/O STRUCTURES COMMITTEE	DATE
NOTE: LOCATION OF UNDERGROUND STRUCTURES AS SHOWN ARE BASED ON THE BEST INFORMATION AVAILABLE BUT NO GUARANTEE IS GIVEN THAT ALL EXISTING UTILITIES ARE SHOWN OR THAT THE GIVEN LOCATIONS ARE EXACT. CONFIRMATION OF EXISTENCE AND EXACT LOCATION OF ALL SERVICES MUST BE OBTAINED FROM THE INDIVIDUAL UTILITIES BEFORE PROCEEDING WITH CONSTRUCTION.	

CITY OF WINNIPEG WATER AND WASTE ENGINEERING DIVISION	
DESIGNED BY	TW
CHECKED BY	TW/KZ
DRAWN BY	RWK
APPROVED BY	
HOR. SCALE	1:250
VERTICAL	1:50
DATE	2004.03.17
RELEASED FOR CONSTRUCTION	

ENGINEER'S SEAL

ORIGINAL SIGNED BY K.R. ZUREK

04/03/18

TENDER No. 97-2004

FILENAME: D-8442-10-D-9446.dwg

PLOT DATE: 2004.03.18

**THE CITY OF WINNIPEG**  
WATER AND WASTE DEPARTMENT

2004 WATERMAIN RENEWALS AND ASSOCIATED WORKS

**LOGAN AVENUE**  
FROM 19.8m W NR NORA STREET TO REITZA STREET

SHEET 6 OF 6

CITY DRAWING NUMBER D-8446