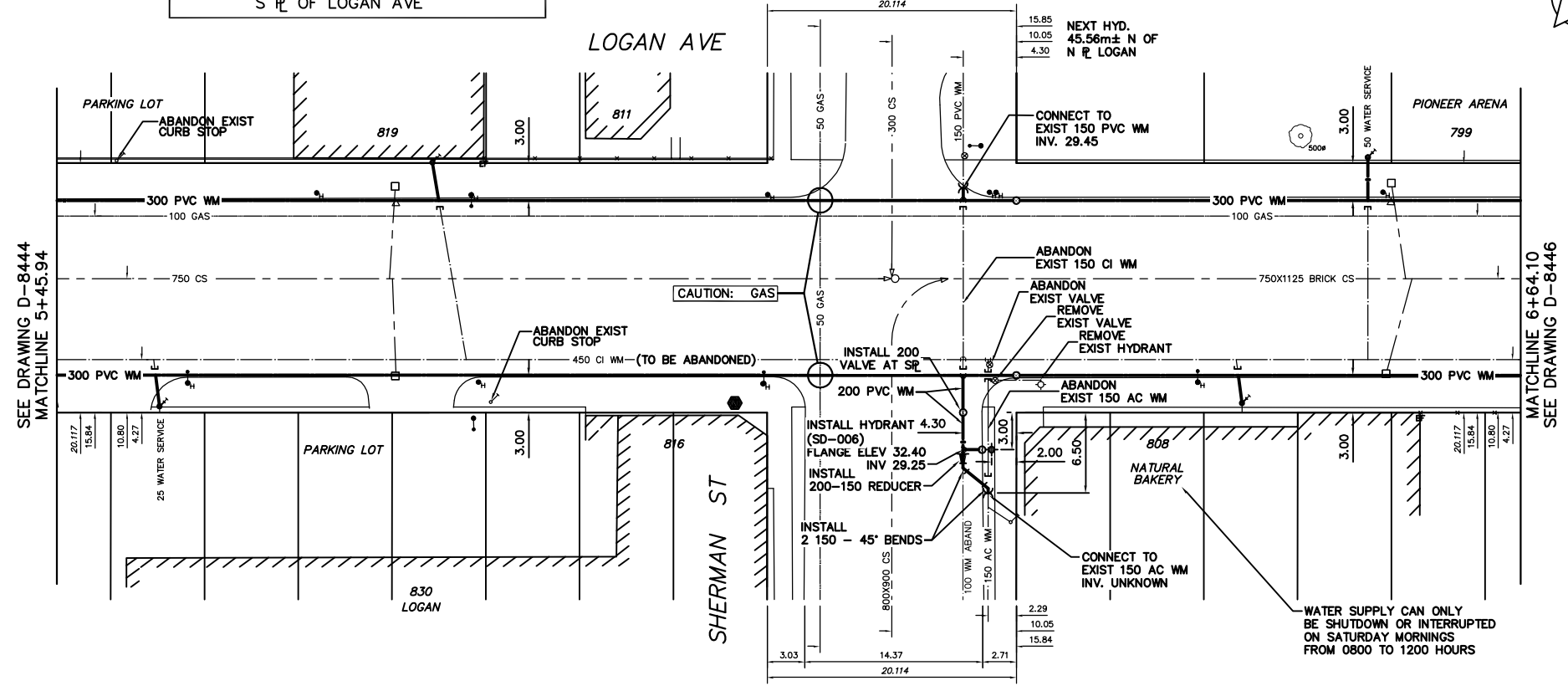


NOTE: CHAINAGES SHOWN ARE ALONG S R OF LOGAN AVE



WATER SERVICE INFORMATION					
ADDRESS	SIZE(mm) & TYPE (STREET)	SIZE(mm) & TYPE (PROP)	SHORT & LONG MEASUREMENT	CORP LOCATION	REMARKS
* 830 LOGAN AVE	25 COPPER	19	2.90 E WL BLDG	0.46 W OF S/C	CPLG 1 INSIDE S/C
* 819 LOGAN AVE	25 COPPER	19	11.46 E EL TECUMSEH	2.74 E OF S/C	NOV 16/01 SERVICE BOX REPLACED BY 449A
* 816 LOGAN AVE	25 COPPER	19	4.11 W EL BLDG		NO INFORMATION AVAILABLE
* 811 LOGAN AVE	19 COPPER	19	3.81 S NL BLDG	26.52 E S/C	C.C. IN BLDG DBL SERV. WITH 815 WHICH IS NOT IN USE
* 808 LOGAN AVE	25 COPPER	19	10.67 W WL SHERMAN	0.46 W OF S/C	MAR 31/00 BURST METER JAN 03 THAWED BY DBM/LL
* 808 LOGAN AVE	19 COPPER	19	1.37 W EL BLDG		CPLG 4 FROM CORP - HYDRG STRAP ON - CON NEW MAIN/05
* 799 LOGAN AVE	50 COPPER	50	5.79 E WL HENRY	1.83 W OF S/C	ANODE AT CORP SERVICE OFF HENRY
* 799 LOGAN AVE	50 COPPER	50	0.30 E WL BLDG	OPP S/C	SERVICE OFF LOGAN
* SEASONAL SERV.	50 COPPER	50	28.65 E EL SHERMAN		CONNECT TO NEW WATERMAIN N SIDE

- * SERVICES TO BE RENEWED TO R ALL OTHERS TO BE RECONNECTED
- CONSTRUCTION NOTES**
1. EXPOSE EXISTING WATERMAIN & CONFIRM INVERTS PRIOR TO CONSTRUCTION.
 2. LOCATION OF ALL SERVICES TO BE CONFIRMED IN THE FIELD.
 3. INSTALL WATERMAIN BY TRENCHLESS METHODS.
 4. TRENCHES AND EXCAVATIONS UNDER PAVEMENT AND WITHIN 1 METRE OF A PAVED AREA INCLUDING SIDEWALKS SHALL BE CLASS 3 BACKFILL.
 5. ALL MATERIALS SHALL CONFORM TO THE CITY OF WINNIPEG STANDARD CONSTRUCTION SPECIFICATIONS.

METRIC
WHOLE NUMBERS INDICATE MILLIMETRES
DECIMALIZED NUMBERS INDICATE METRES

NOTE: ALL VALVES TO BE INSTALLED COUNTERCLOCKWISE TO CLOSE

WARNING
IF POWER EQUIPMENT OR EXPLOSIVES ARE TO BE USED FOR EXCAVATION ON THIS PROJECT THE CONTRACTOR MUST:
1) NOTIFY THE GAS COMPANY OF THE PROPOSED LOCATION OF EXCAVATION.
2) TAKE PRECAUTION TO AVOID DAMAGE TO GAS COMPANY INSTALLATIONS.
SEE PROVINCIAL REGULATION 210/72 FOR DETAILS

200 WM	WATERMAIN	200 WM	SL, HYDRO	150 WM	WATERMAIN NORTH SIDE	150 WM
+	HYDRANT	+	MTS	+	WATERMAIN SOUTH SIDE	+
o	VALVE	o	TRAFFIC SIGNALS	o	HYDRANT	o
525 LDS	LAND DRAINAGE SEWER	525 LDS	GAS	50 GAS	VALVE	X
375 WWS	WASTEWATER SEWER	375 WWS	SURVEY BAR	300 LOS	LAND DRAINAGE SEWER	300 LOS
o	MANHOLE	o	FENCE	250 WWS	WASTEWATER SEWER	250 WWS
o	CATCH BASIN	o	POLE - HYDRO, MTS	X	C PROFILE	
v	CURB INLET	v	CURB STOP	o	GROUND ABOVE PIPE	
r	REDUCER	r	GUY ANCHOR	o	GROUND NORTH GUTTER	
x	COUPLING	x	LIGHT STANDARD	o	GROUND SOUTH GUTTER	
u	ANODE	u	TREE			
EXISTING	LEGEND-PLAN	PROPOSED	EXISTING	LEGEND-PLAN	PROPOSED	EXISTING
				LEGEND-PROFILE	PROPOSED	

LOCATION APPROVED UNDERGROUND STRUCTURES		B.M. ELEV.	FIELD BOOK #:
SUPV. U/O STRUCTURES COMMITTEE	DATE		
NOTE: LOCATION OF UNDERGROUND STRUCTURES AS SHOWN ARE BASED ON THE BEST INFORMATION AVAILABLE BUT NO GUARANTEE IS GIVEN THAT ALL EXISTING UTILITIES ARE SHOWN OR THAT THE GIVEN LOCATIONS ARE EXACT. CONFIRMATION OF EXISTENCE AND EXACT LOCATION OF ALL SERVICES MUST BE OBTAINED FROM THE INDIVIDUAL UTILITIES BEFORE PROCEEDING WITH CONSTRUCTION.			
NO.	REVISIONS	DATE	BY

CITY OF WINNIPEG WATER AND WASTE ENGINEERING DIVISION

DESIGNED BY: TW
CHECKED BY: TW/KZ

DRAWN BY: RWK
APPROVED BY:

HOR. SCALE: 1:250
VERTICAL: 1:50
DATE: 2004.03.17

ENGINEER'S SEAL
ORIGINAL SIGNED BY K.R. ZUREK
04/03/18

THE CITY OF WINNIPEG WATER AND WASTE DEPARTMENT

2004 WATERMAIN RENEWALS AND ASSOCIATED WORKS
LOGAN AVENUE
FROM 3.2m E OF TECUMSEH STREET TO 19.8m W OF NORA STREET

SHEET 5 OF 6
CITY DRAWING NUMBER D-8445