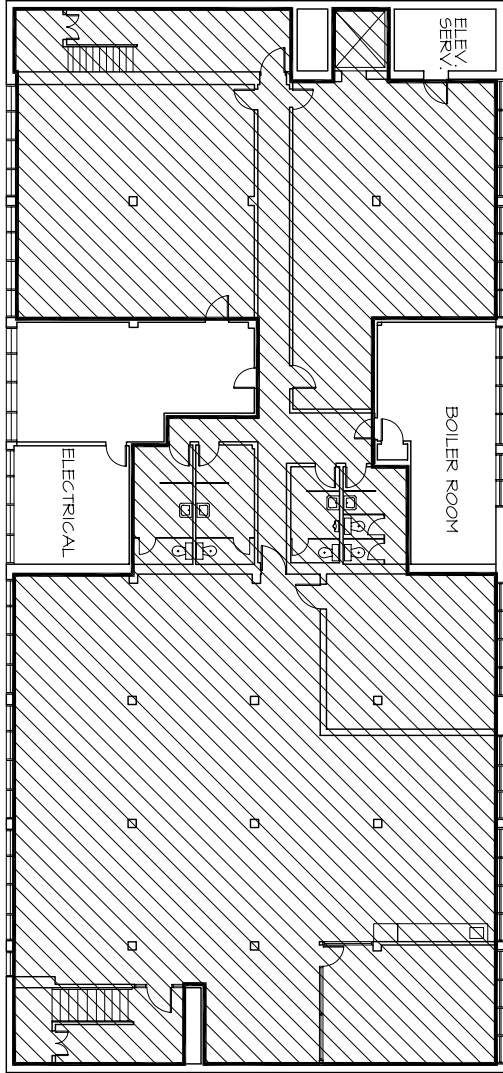




6,308 SQUARE FEET



BASEMENT FLOOR PLAN

DRAWING F(1)-R0

NOTES:

FLOOR PLAN UPDATED MAR 198

NO.	REVISION/DESCRIPTION	BY	DATE

DESIGNED BY: JKL | CHECKED BY: ABC | APPROVED BY: DEF
 DATE: 05/22/2022 | ISSUED FOR APPROVAL

PROJECT: ST. JAMES - ASSINIBOIA LIBRARY
 1910 PORTAGE AVENUE

PROJECT NO: 1910P60B
 SHEET NO: A-1
 SHEET TITLE: BASEMENT FLOOR PLAN

SCALE: 1/8" = 1'-0"