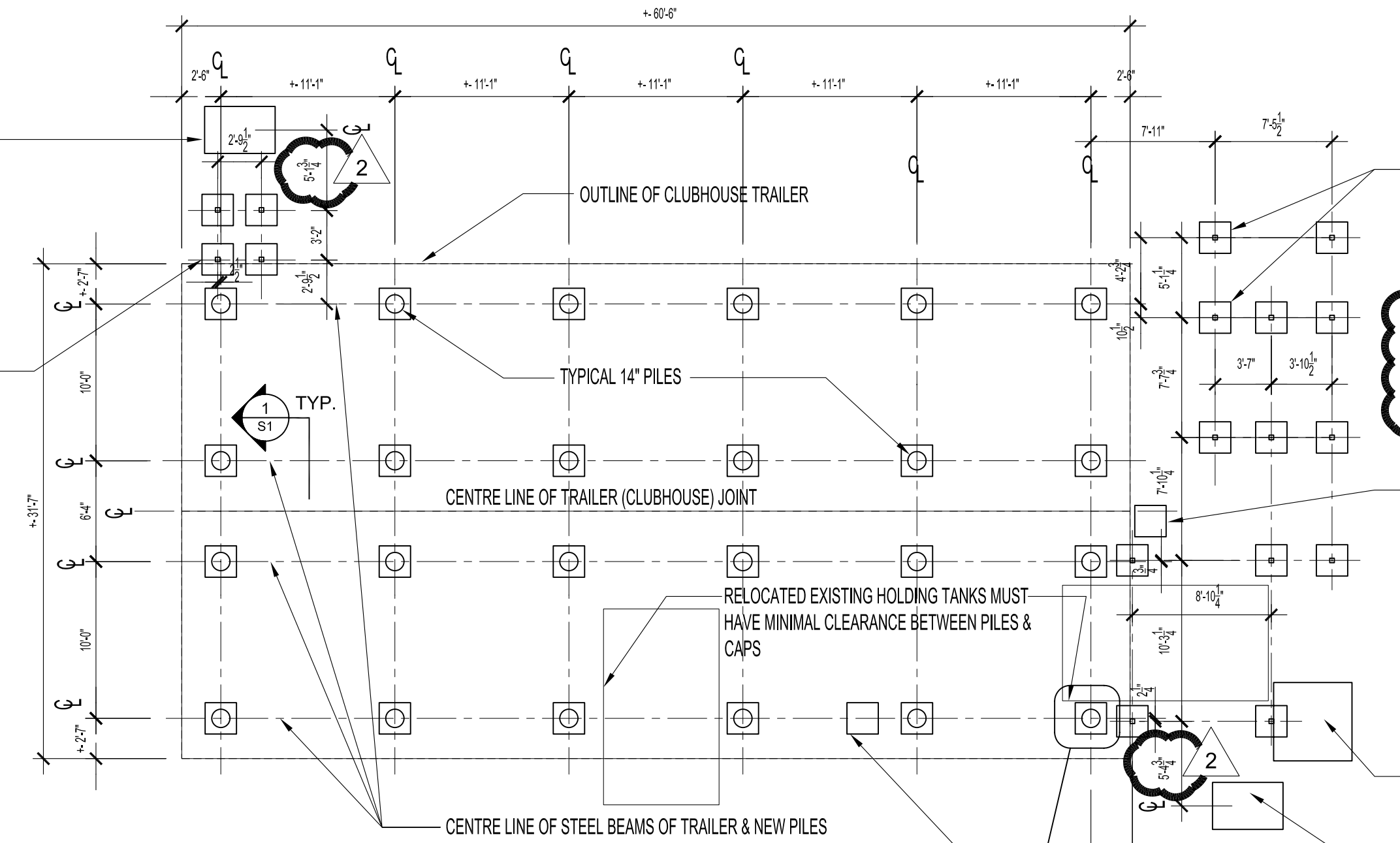


4'-6" x 3'-0" x 6" CONCRETE (10M @ 12" EACH WAY BTM.) PAD AT GRADE LEVEL. STRINGERS TO SIT ON PAD.

TYP. 2'-0" x 2'-0" x 6" CONCRETE (10M @ 12" EACH WAY BTM.) PADS AT GRADE LEVEL. C/W POST BASES (SIMPSON STRONG TIE MODEL NO. LCB44)



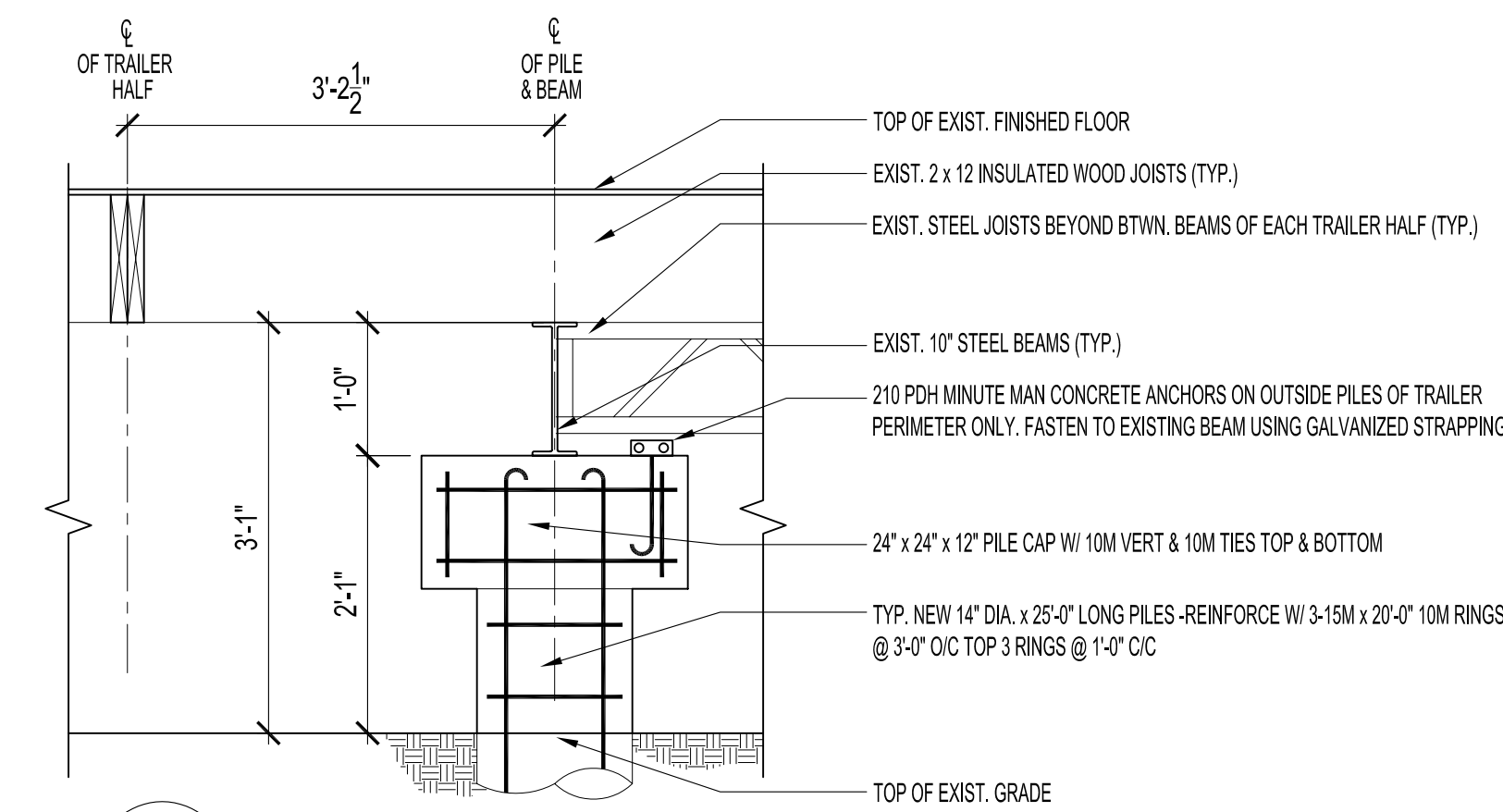
TYP. 2'-0" x 2'-0" x 6" CONCRETE (10M @ 12" EACH WAY BTM. UNLESS NOTED OTHERWISE) PADS AT GRADE LEVEL. C/W POST BASES (SIMPSON STRONG TIE MODEL NO. LCB44)

NOTE: 9'-2'-0" x 2'-0" x 6" CONCRETE RAMP PADS & 5'-0" x 5'-0" x 6" CONCRETE RAMP PAD NOT REQUIRED FOR 'STAIRS ONLY' PLAN

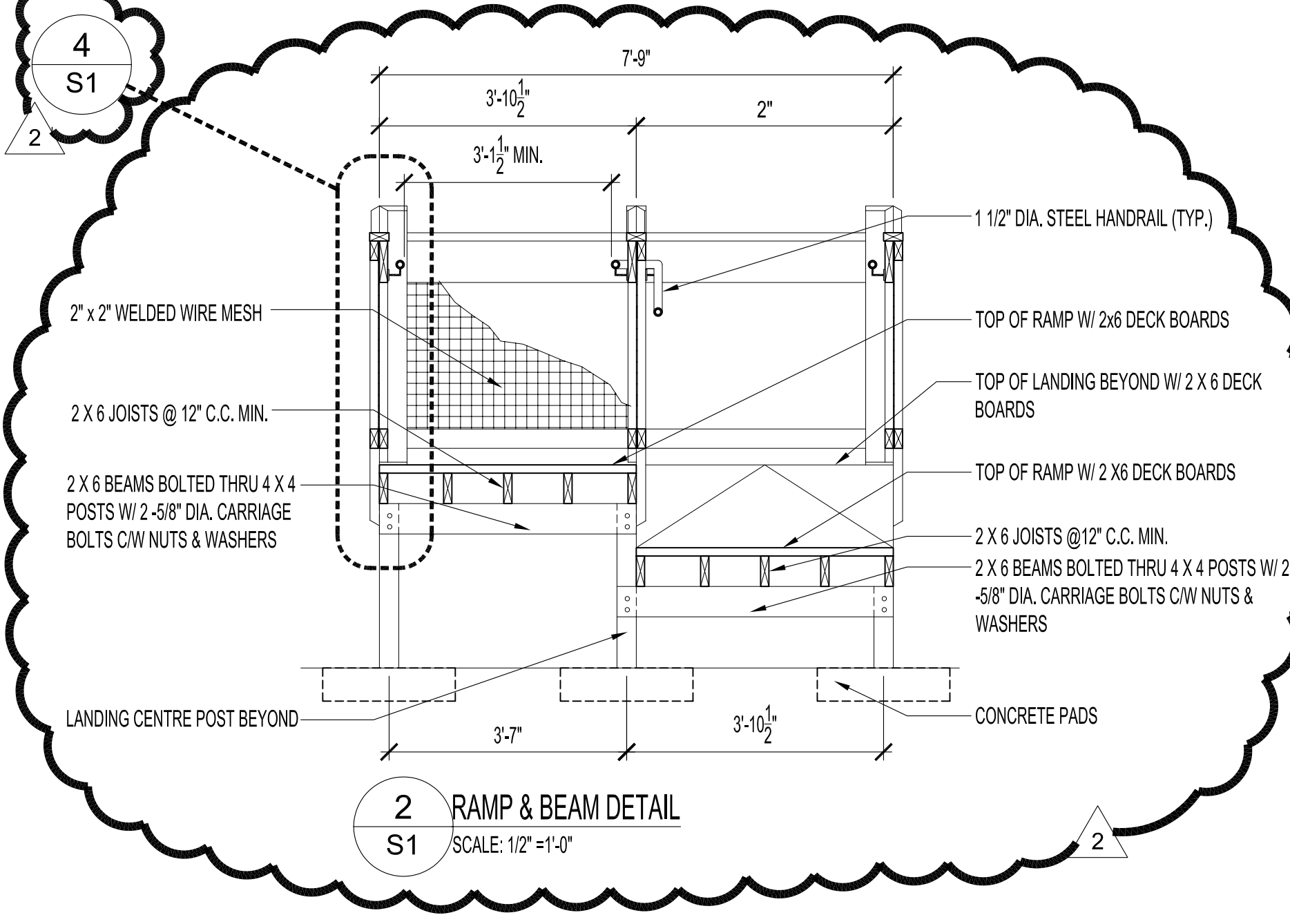
2'-0" x 2'-0" x 6" CONCRETE (10M @ 12" EACH WAY) PAD ABOVE GRADE LEVEL FOR RELOCATION OF CONDENSOR

5'-0" x 5'-0" x 6" CONCRETE (10M @ 12" EACH WAY) PAD

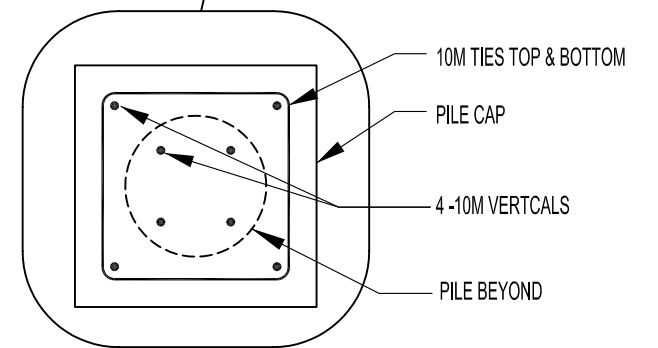
4'-6" x 3'-0" x 6" CONCRETE (10M @ 12" EACH WAY) PAD AT GRADE LEVEL. STRINGERS TO SIT ON PAD.



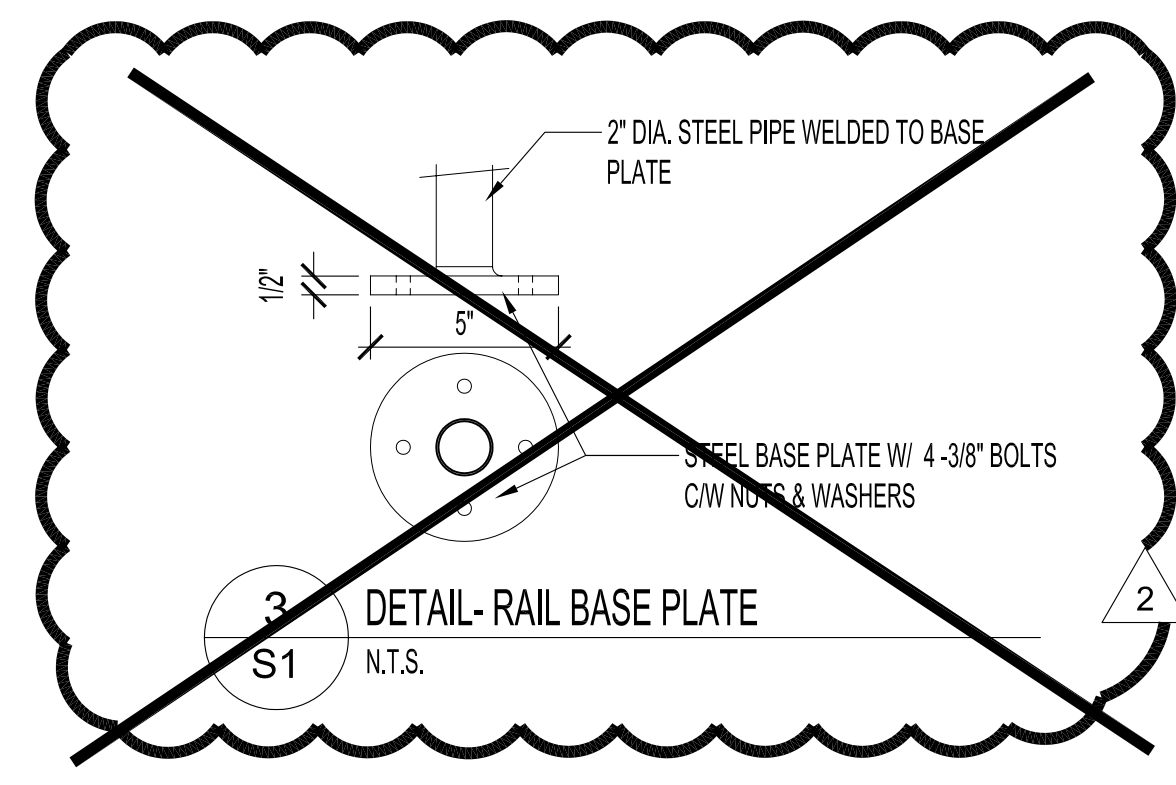
1 BEAM & PILE DETAIL
S1 SCALE: 3/4"=1'-0"



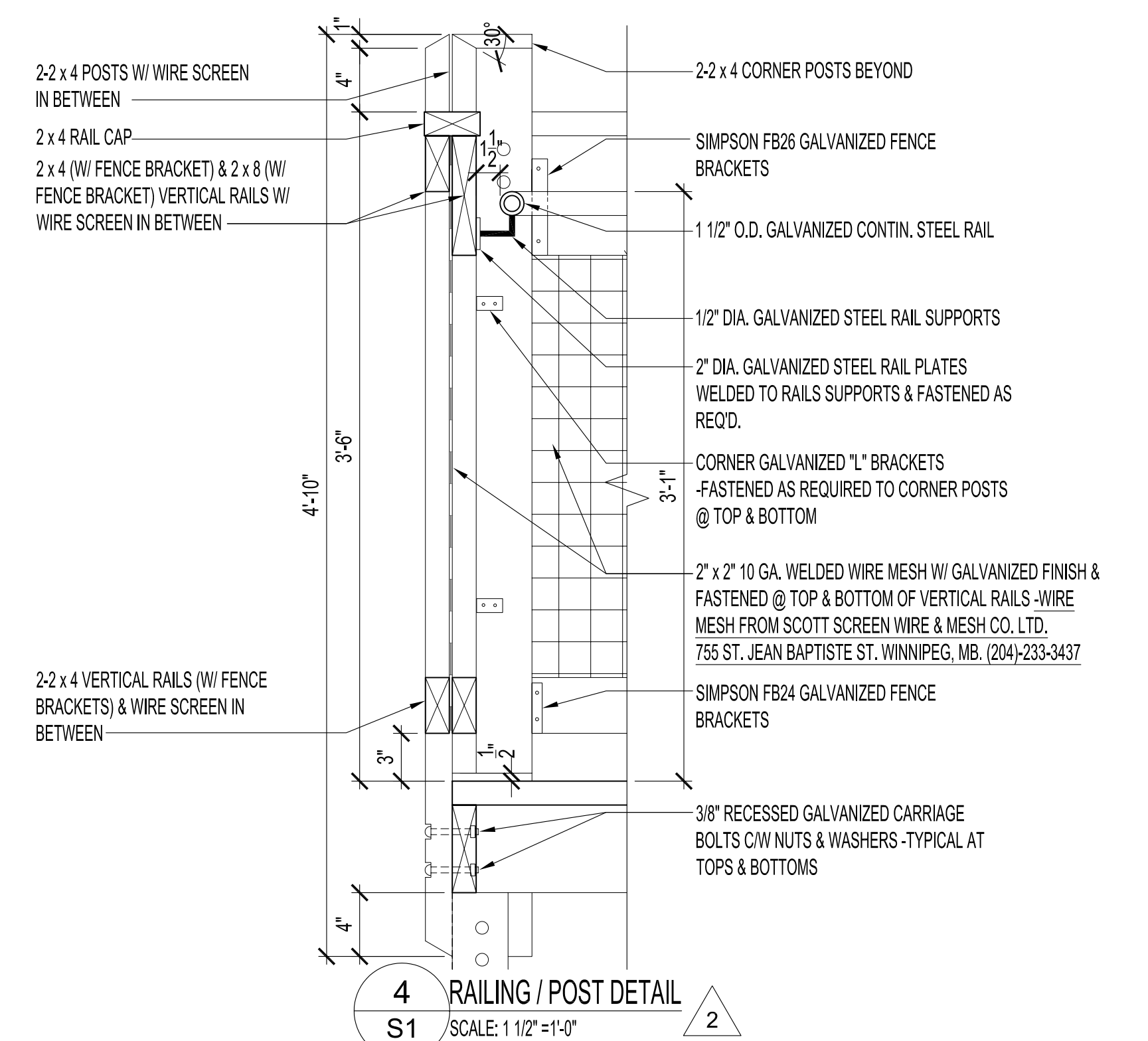
2 RAMP & BEAM DETAIL
S1 SCALE: 1/2"=1'-0"



PILE CAP PLAN
N.T.S.



3 DETAIL- RAIL BASE PLATE
S1 N.T.S.



4 RAILING / POST DETAIL
S1 SCALE: 1 1/2"=1'-0"

NOTES :

STRUCTURAL NOTES:

- ALL WORK SHALL COMPLY WITH THE LATEST EDITION OF THE MANITOBA BUILDING CODE.
- PILING DESIGNED AS CAST-IN-PLACE FRICTION PILES, DESIGN SKIN FRICTION VALUE 14.4KN/M2.
-CONCRETE SHALL BE 30 MPa (90mm SLUMP) USING SULFATE RESISTANT CONCRETE.
-ALL HOLES SHALL BE DRILLED TO DEPTHS AND IN EXACT LOCATIONS SHOWN ON DRAWINGS. THE CONTRACTOR SHALL NOTIFY THE CONTRACT ADMINISTRATOR IMMEDIATELY IF IMPOSSIBLE TO ATTAIN DEPTHS OR IF WATER IS ENCOUNTERED. CONTRACTOR SHALL PUMP WATER PRIOR TO POURING OR INCREASE SIZE OF PILING TO ACHIEVE NECESSARY FRICTION BEARING.
- CONCRETE
ALL CONCRETE CAPS & FOOTINGS SHALL BE 30 MPa, 20mm AGGREGATE, 5-7% AIR & 100mm SLUMP. REINFORCE W/ 10M @ 12" EACH WAY UNLESS NOTED OTHERWISE.
-CONTRACTOR SHALL CHECK ALL FOUNDATION DIMENSIONS ON STRUCTURAL DRAWINGS FOR COMPLIANCE WITH ARCHITECTURAL & MECHANICAL DRAWINGS.
- DESIGN LOADS
FLOOR LIVE LOAD: 100 psf
ROOF SNOW LOAD: 36 psf

ORIGINAL SEALED BY:
B.T.M. Konzelman P. Eng.
Date: 2004/12/06

- 2 ADD NOTE FOR 'STAIR ONLY' PLAN
- ADD NEW RAIL DETAIL 4.
- DELETE BASE PLATE DETAIL 3.
- CONCRETE PADS SIZES WERE 4'-6" x 2'-0" x 6".
- RAILINGS, BALUSTERS, POSTS WERE STEEL.
- DECK BOARDS WERE 'RHINO DECKING'.
- CENTRE LINE WAS 4'-7 3/4" (NOW 5'-1 3/4").
- CENTRE LINE WAS 4'-10 3/4" (NOW 5'-4 3/4").
- 1 NEW BASE PLATE DETAIL 3.
- REVISE LOCATION OF CONCRETE PADS.
- REVISE WIDTHS OF RAMPS & RAIL TYPES.

NO.	REVISION/DESCRIPTION	BY	DATE
SEALS			

DRAWN BY	CHECKED BY	APPROVED
MMK	USER	APPROVAL
DATE	2004.10.28	

CITY OF WINNIPEG
PLANNING, PROPERTY &
DEVELOPMENT DEPARTMENT
CIVIC ACCOMMODATIONS DIVISION
300 - 65 GARRY ST. R3C 4K4

PROJECT
Wpg. Police Services -Bridgewater Park
Foundation Upgrading
341 CADBORO ROAD -Police Firing Range

SCALE	PROJECT NO.	SHEET NO.
Noted	2003-067	S1R2